

Product datasheet for **RC223409**

Glyt1 (SLC6A9) (NM_201649) Human Tagged ORF Clone

Product data:

Product Type:	Expression Plasmids
Product Name:	Glyt1 (SLC6A9) (NM_201649) Human Tagged ORF Clone
Tag:	Myc-DDK
Symbol:	Glyt1
Synonyms:	GCENSG; GLYT1
Mammalian Cell Selection:	Neomycin
Vector:	pCMV6-Entry (PS100001)
E. coli Selection:	Kanamycin (25 ug/mL)



[View online »](#)

ORF Nucleotide
Sequence:

>RC223409 representing NM_201649
Red=Cloning site Blue=ORF Green=Tags(s)

CTATAGGGCGGCCGGGAATTCGTCGACTGGATCCGGTACCGAGGAGATCTGCCGCCGCGATCGCCGGCGC
GCC

ATGAGCGGCGGAGACACGCGGGCTGCGATCGCTCGCCCCAGGATGGCCGCGGCTCATGGACCTGTGGCCC
CCTCTTCCCAGAACAGGTGACGCTTCTCCCTGTTTCAGAGATCCTTCTTCTGCCACCCCTTTCTGGAGC
CACTCCCTCTACTTCCCTAGCAGAGTCTGTCTCAAAGTCTGGCATGGGGCTACAACCTCTGGTCTCCTT
CCCCAACTCATGGCCAGCACTCCCTAGCCATGGCCAGAATGGTGTGTGCCAGCGAGGCCACCAAGA
GGGACCAGAACCTCAAACGGGGCAACTGGGGCAACCAGATCGAGTTTGTACTGACGAGCGTGGGCTATGC
CGTGGGCTGGGCAATGTCTGGCGCTTCCCATACCTCTGCTATCGCAACGGGGAGGCGCCTTCATGTTCC
CCCTACTTCATCATGCTCATCTTCTGCGGGATCCCCCTCTTTCATGGAGCTCTCCTTCGGCCAGTTTG
CAAGCCAGGGGTGCTGGGGTCTGGAGGATCAGCCCCATGTTCAAAGGAGTGGGCTATGGTATGATGGT
GGTGTCCACCTACATCGGCATCTACTACAATGTGGTTCATCTGCATCGCCTTCTACTACTTCTTCTCGTCC
ATGACGCACGTGCTGCCCTGGGCTACTGCAATAACCCCTGGAACACGCATGACTGCGCCGGTGTACTGG
ACGCTCCAACCTCACCATGGCTCTCGGCCAGCCGCTTGGCCAGCAACCTCTCCACCTGCTCAACCA
CAGCTCCAGAGGACCAGCCCCAGCGAGGAGTACTGGAGGCTGTACGTGCTGAAGCTGTCAGATGACATT
GGGAACCTTGGGAGGTGCGGCTGCCCTCCTTGGCTGCCTCGGTGTCTCCTGGTTGGTGTCTTCTCT
GCCTCATCCGAGGGGTCAAGTCTTCAGGAAAGTGGTGTACTTCACGGCCACGTTCCCTACGTGGTGTCT
GACCATTCTGTTGTCCGCGGAGTGACCCTGGAGGGAGCCTTTCACGGCATCATGTAACCTAACCCCG
CAGTGGGACAAGATCCTGGAGGCCAAGGTGTGGGTGATGCTGCCTCCAGATCTTCTACTACTGGGT
CGCGTGGGAGGCCTCATCACCATGGCTTCTACAACAAGTCCACAATAACTGTTACCGGACAGTGT
CATCATCAGCATACCAACTGTGCCACCAGCGTCTATGCTGGCTTCGTCATCTTCTCCATCCTCGGCTTC
ATGGCCAATCACCTGGGCGTGGATGTGTCCCGTGTGGCAGACCAGGCCCTGGCCTGGCCTTCGTGGCTT
ACCCCGAGGCCCTCACACTACTTCCCATCTCCCGCTGTGGTCTCTGCTCTTCTTCTTCATGCTTATCCT
GCTGGGGCTGGGCACTCAGTTCTGCCTCCTGGAGACGCTGGTCACAGCCATTGTGGATGAGGTGGGAAT
GAGTGGATCCTGCAGAAAAGACCTATGTGACCTTGGGCGTGGCTGTGGCTGGCTTCTGCTGGGCATCC
CCCTACCAGCCAGGCAGGCATCTATTGGCTGCTGCTGATGGACAATATGCGGCCAGCTTCTCCTTGGT
GGTCATCTCCTGCATCATGTGTGTGGCCATCATGTACATCTACGGGCACCGGAATACTTCCAGGACATC
CAGATGATGCTGGGATCCACCACCCCTTTCTTTCAGATCTGCTGGCGCTTCGTCTCTCCCGCCATCA
TCTTCTTTATTCTAGTTTCACTGTGATCCAGTACCAGCCGATCACCTACAACCACTACCAGTACCAGG
CTGGGCGGTGGCCATTGGCTTCCCTCATGGCTCTGTCTCCGCTCCTGTCATCCCCCTCTACGCCATGTT
CGGCTCTGCCGCACAGACGGGGACACCCTCCTCCAGCGTTTAAAAATGCCACAAAGCAAGCAGAGACT
GGGGCCCTGCCCTCCTGGAGCACCGGACAGGGCGCTACGCCCCACCATAGCCCCCTCCTGAGGACGG
CTTCGAGGTCCAGCCACTGCACCCGACAAGGCGCAGATCCCCATTGTGGGCAATGGCTCCAGCCGC
CTCCAGGACTCCCGGATA

ACGCGTACGCGGCGGCTCGAGCAGAACTCATCTCAGAAGAGGATCTGGCAGCAAATGATATCCTGGATT
ACAAGGATGACGACGATAAGGTTTAA

Protein Sequence: >RC223409 representing NM_201649
Red=Cloning site Green=Tags(s)

```

MSGGDTRAAIARPRMAAAHGVPVAPSSPEQVTLTPVQRSFFLPPFSGATPSTSLAESVLKVVHGA YNSGLL
PQLMAQHSLAMAQNGAVPSEATKRDQNLKRGNWGNQIEFVLTSVG YAVGLGNVWRFPYLCYRNGGGAFMF
PYFIMLIFCGIPLFFMELSFQGQFASQGC LGVWRI SPMFKGVGVGMMVSTYIGIYNNVICIAFYFFSS
MTHVLPWAYCNPWNTHDCAGVLDASNL TNGSRPAALPSNL SHLLNHSLQRTSPSEEWRLYVVLKLSDDI
GNFGEVRLPLLGLGVSWLVVFLCLIRGVKSSGKVYVFTATFPYVVL TILFVRGVTLEGAFDGMYYLTP
QWDKILEAKVWGDAASQIFYS LGCAWGLITMASYNKFHNNCYRDSV IISITNCATSVYAGVFVIF SILGF
MANHLGVDVSRVADHGPGLAFVAYPEAL TLLPISPLWSLLFFML ILLGLGTQFCLLETLVTAIVDEVGN
EWILQKKTYVTLGVAVAGFLLGIPLTSQAGIYWLLMDNYAASFSLV VVISCIMCVAIMYIYGHRYFQDI
QMMMLGFPPPLFFQICWRFVSPAIIFFILVFTVIQYQPITYNHYQ YPGWAVAIGFLMALSSVLCIPLYAMF
RLCRTDGD TLLQRLKNATKPSRDWGPALLEHRTGRYAPT IAPSPEDGF EVQPLHPDKAQIPIVGSNGSSR
LQDSRI
    
```

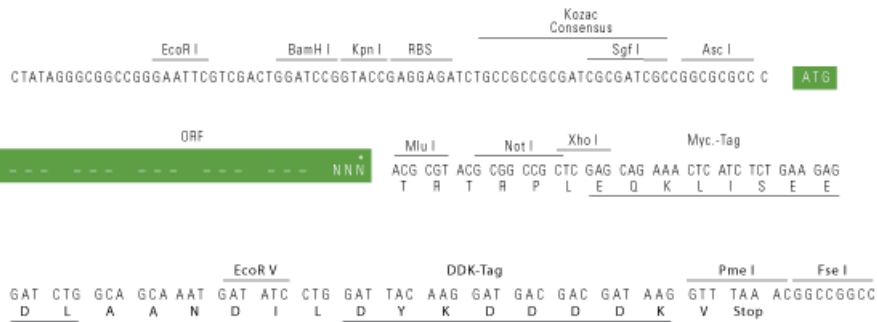
TRTRPLEQKLI SEEDLAANDILDYKDDDDKV

Chromatograms: https://cdn.origene.com/chromatograms/mg2867_a01.zip

Restriction Sites: AscI-MluI

Cloning Scheme:

Cloning sites used for ORF Shuttling:



* The last codon before the Stop codon of the ORF

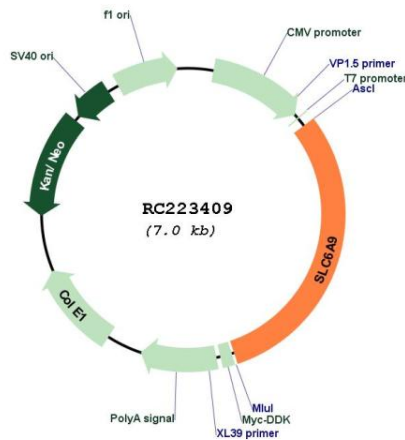
ACCN: NM_201649

ORF Size: 2118 bp

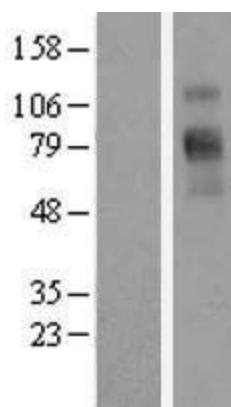
OTI Disclaimer: The molecular sequence of this clone aligns with the gene accession number as a point of reference only. However, individual transcript sequences of the same gene can differ through naturally occurring variations (e.g. polymorphisms), each with its own valid existence. This clone is substantially in agreement with the reference, but a complete review of all prevailing variants is recommended prior to use. [More info](#)

OTI Annotation: This clone was engineered to express the complete ORF with an expression tag. Expression varies depending on the nature of the gene.

Components:	The ORF clone is ion-exchange column purified and shipped in a 2D barcoded Matrix tube containing 10ug of transfection-ready, dried plasmid DNA (reconstitute with 100 ul of water).
Reconstitution Method:	<ol style="list-style-type: none"> 1. Centrifuge at 5,000xg for 5min. 2. Carefully open the tube and add 100ul of sterile water to dissolve the DNA. 3. Close the tube and incubate for 10 minutes at room temperature. 4. Briefly vortex the tube and then do a quick spin (less than 5000xg) to concentrate the liquid at the bottom. 5. Store the suspended plasmid at -20°C. The DNA is stable for at least one year from date of shipping when stored at -20°C.
RefSeq:	NM_201649.4
RefSeq Size:	3375 bp
RefSeq ORF:	2121 bp
Locus ID:	6536
UniProt ID:	P48067
Cytogenetics:	1p34.1
Protein Families:	Druggable Genome, Transmembrane
MW:	78.1 kDa
Gene Summary:	The amino acid glycine acts as an inhibitory neurotransmitter in the central nervous system. The protein encoded by this gene is one of two transporters that stop glycine signaling by removing it from the synaptic cleft. [provided by RefSeq, Jun 2016]

Product images:


Circular map for RC223409



Western blot validation of overexpression lysate (Cat# [LY404499]) using anti-DDK antibody (Cat# [TA50011-100]). Left: Cell lysates from untransfected HEK293T cells; Right: Cell lysates from HEK293T cells transfected with RC223409 using transfection reagent MegaTran 2.0 (Cat# [TT210002]).