

## Product datasheet for **RC223408**

### UGT2B10 (NM\_001075) Human Tagged ORF Clone

#### Product data:

Product Type:	Expression Plasmids
Product Name:	UGT2B10 (NM_001075) Human Tagged ORF Clone
Tag:	Myc-DDK
Symbol:	UGT2B10
Synonyms:	UDPGT2B10
Mammalian Cell Selection:	Neomycin
Vector:	pCMV6-Entry (PS100001)
E. coli Selection:	Kanamycin (25 ug/mL)



[View online »](#)

**ORF Nucleotide Sequence:**

>RC223408 representing NM\_001075  
 Red=Cloning site Blue=ORF Green=Tags(s)

TTTTGTAATACGACTCACTATAGGGCGGCCGGAATTCGTCGACTGGATCCGGTACCGAGGAGATCTGCC  
 GCC**CGGATCGCC**

ATGGCTCTGAAATGGACTACAGTTCTGCTGATACAACCTAGTTTTACTTTAGCTCTGGGAGTTGTGGAA  
 AGGTGCTGGTATGGGCCGAGAATACAGCCTTTGGATGAATATGAAGACAATCCTGAAAGAACTTGTTC  
 GAGAGGTCATGAGGTGACTGTAAGTCTTCCAGCTTCCATTCTTTTATCCCAACGACTCATCCACT  
 CTTAAACTTGAAGTTTATCCTACATCTTAACTAAAAGTAAATTTGAGAAATATCATCATGAATTGGTTA  
 AGAGATTGTCAGAAATCAAAAAGATACATTTGGTTACCTTTTCCACAAGAACAAGAAATCCTGTGGGC  
 AATTAATGACATAATTAGAACTTCTGTAAGATGTAGTTTCAAATAAGAACTTATGAAAACTACAA  
 GAGTCAAGATTTGACATCGTTTTGTCAGATGCTTATTTACCCTGTGGTGGCTGCTGGCTGAGCTATTTA  
 ACATACCCTTTGTGTACAGTACAGCTTACGCTCCTGGCTACTCATTGAAAGGCACAGTGGAGGATTTAT  
 TTTCCCTCCTTCTACGTACCTGTTGTTATGTCAAATAAAGTATCAAAATGACTTTCATGGAGAGGTA  
 AAAAATATGCTCTATGTGCTTTATTTGACTTTTGGTTCCAAATATTTAATATGAAGAAGTGGGATCAGT  
 TTTACAGTGAAGTTTTAGGAAGCCACTACATTATCTGAGACAATGAGGAAAGCTGACATATGGCTTAT  
 GCGAAACTCCTGGAATTTAAATTTCTCATCCATTCTTACCAAATGTTGATTTTGTGGAGGACTCCAC  
 TGCAAACCTGCCAAACCCCTACCTAAGGAAATGGAGGAGTTTGTACAGAGCTCTGGAGAAAATGGTGTG  
 TGGTGTCTCTGGGGTCAATGGTCAGTAACATGACAGAAGAAAGGGCCAACTAATTGCAACAGCCCT  
 TGCCAAGATCCCAAAAAGGTTCTTTGGAGATTGATGGGAATAAACCAGATGCCTTAGGTCTCAATACT  
 CGACTGTACAAGTGGATACCCAGAATGACCTTCTAGGTATCCAAAAACCAGAGCTTTTATAACTCATG  
 GTGGAGCCAATGGCATCTATGAGGCAATCTACCATGGGATCCCTATGGTGGGCATTCCTGTTTTTTGA  
 TCAACCTGATAAATTGCTCACATGAAGGCCAAGGGAGCAGCTGTTAGAGTGGACTTCAACACAATGTCG  
 AGTACAGACCTGCTGAATGCACTGAAGACAGTAATTAATGATCCTTCATATAAAGAGAATATTATGAAAT  
 TATCAAGAATTCAACATGATCAACCAGTGAAGCCCTGGATCGAGCAGTCTTCTGGATTGAATTTGTCAT  
 GCGCCACAAGGAGCCAAACATCTTCGAGTTGCAGCCACAACCTCACCTGGTCCAGTACCCTCTTTG  
 GATGTGATTGGGTTCTGCTGGCTTGTGTGGCAACCGTCTATTTATCATCAAAAGTGTGTCTGTTTT  
 GTTTCTGGAAGTTTGCTAGAAAAGGAAAGAAGGGAAAAAGGGAT

**ACGCGT**ACGCGGCCGCTCGAGCAGAACTCATCTCAGAAGAGGATCTGGCAGCAAATGATATCCTGGATT  
 ACAAGGATGACGACGATAAGGTTTAA

**Protein Sequence:**

>RC223408 representing NM\_001075  
 Red=Cloning site Green=Tags(s)

MALKWTTVLLIQLSFYFSSGSCGKVLVWAAEYSLWMMKTIKELVQRGHEVTVLASSASILFDPNDSST  
 LKLEVYPTSLTKTEFENIIMQLVKRLSEIQKDFWL PFSQEQEILWAINDIIRNFCKDVVSNKLMKKLQ  
 ESRFDIVFADAYLPCGELLAELFNIPFVYSHSFSPGYSFERHSGGFIFPPSYVPVVMMSKLSQDMTFMERY  
 KNMLYVLYDFWFQIFNMKKWDQFYSEVLGRPTTLSETMRKADIWLMRNSWNFKFPHFPLPNVDFVGGGLH  
 CKPAKPLPKEMEEFVQSSGENGVVVFSLGSMVSNMTEERANVIATALAKIPQKVLWRFDGNKPDALGLNT  
 RLYKWIPQNDLLGHPKTRAFITHGGANGIYEAIYHGIPMVGIPLFFDQPDNIAHMKAKGAAVRVDFNTMS  
 STDLLNALKTVINDPSYKENIMKLSRIQHDQPVKPLDRAVFWIEFVMRHKGAKHLRVAAHNLTFWQYHSL  
 DVI GFL LACVATVLF IITKCLFCFWKFARKGKGRD

**TRTRPLEQKLI**SEEDLAANDILDYKDDDDKV

**Chromatograms:**

[https://cdn.origene.com/chromatograms/mk8005\\_d01.zip](https://cdn.origene.com/chromatograms/mk8005_d01.zip)

**Restriction Sites:**

Sgfl-MluI

**Cloning Scheme:**


**ACCN:** NM\_001075

**ORF Size:** 1584 bp

**OTI Disclaimer:** The molecular sequence of this clone aligns with the gene accession number as a point of reference only. However, individual transcript sequences of the same gene can differ through naturally occurring variations (e.g. polymorphisms), each with its own valid existence. This clone is substantially in agreement with the reference, but a complete review of all prevailing variants is recommended prior to use. [More info](#)

**OTI Annotation:** This clone was engineered to express the complete ORF with an expression tag. Expression varies depending on the nature of the gene.

**Components:** The ORF clone is ion-exchange column purified and shipped in a 2D barcoded Matrix tube containing 10ug of transfection-ready, dried plasmid DNA (reconstitute with 100 ul of water).

- Reconstitution Method:**
1. Centrifuge at 5,000xg for 5min.
  2. Carefully open the tube and add 100ul of sterile water to dissolve the DNA.
  3. Close the tube and incubate for 10 minutes at room temperature.
  4. Briefly vortex the tube and then do a quick spin (less than 5000xg) to concentrate the liquid at the bottom.
  5. Store the suspended plasmid at -20°C. The DNA is stable for at least one year from date of shipping when stored at -20°C.

**RefSeq:** [NM\\_001075.6](#)

**RefSeq Size:** 1620 bp

**RefSeq ORF:** 1587 bp

**Locus ID:** 7365

**UniProt ID:** [P36537](#)

**Cytogenetics:** 4q13.2

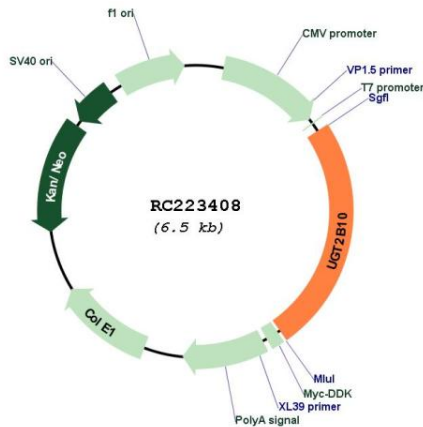
**Protein Families:** Transmembrane

**Protein Pathways:** Androgen and estrogen metabolism, Ascorbate and aldarate metabolism, Drug metabolism - cytochrome P450, Drug metabolism - other enzymes, Metabolic pathways, Metabolism of xenobiotics by cytochrome P450, Pentose and glucuronate interconversions, Porphyrin and chlorophyll metabolism, Retinol metabolism, Starch and sucrose metabolism

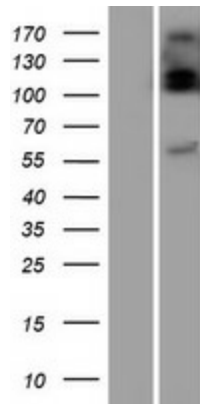
**MW:** 60.6 kDa

**Gene Summary:** UDPGT is of major importance in the conjugation and subsequent elimination of potentially toxic xenobiotics and endogenous compounds.[UniProtKB/Swiss-Prot Function]

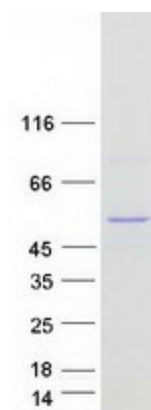
**Product images:**



Circular map for RC223408



Western blot validation of overexpression lysate (Cat# [LY421349]) using anti-DDK antibody (Cat# [TA50011-100]). Left: Cell lysates from untransfected HEK293T cells; Right: Cell lysates from HEK293T cells transfected with RC223408 using transfection reagent MegaTran 2.0 (Cat# [TT210002]).



Coomassie blue staining of purified UGT2B10 protein (Cat# [TP323408]). The protein was produced from HEK293T cells transfected with UGT2B10 cDNA clone (Cat# RC223408) using MegaTran 2.0 (Cat# [TT210002]).