

## Product datasheet for **RC223379**

### CLIP4 (NM\_024692) Human Tagged ORF Clone

#### Product data:

Product Type:	Expression Plasmids
Product Name:	CLIP4 (NM_024692) Human Tagged ORF Clone
Tag:	Myc-DDK
Symbol:	CLIP4
Synonyms:	RSNL2
Mammalian Cell Selection:	Neomycin
Vector:	pCMV6-Entry (PS100001)
E. coli Selection:	Kanamycin (25 ug/mL)



[View online »](#)

ORF Nucleotide  
Sequence:

>RC223379 ORF sequence  
Red=Cloning site Blue=ORF Green=Tags(s)

TTTTGTAATACGACTCACTATAGGGCGGCCGGAATTCGTCGACTGGATCCGGTACCGAGGAGATCTGCC  
GCCGCGATCGCC

ATGACCATAGAGGACCTCCAGATTTCCATTAGAAGGAAATCCTTTGTTTGAAGATACCCATTTATAT  
TTTCTGCTTCTGATACCCAGTTATCTTTCCATTTCTGCAGCACCAATGCCTTCAGACTGTGAATTTTC  
TTTCTTTGATCCTAATGATGCATCATGCCAGGAAATCTTTTTGATCCCAAACTTCAGTTTCAGAATTA  
TTTGCCATTTTGAAGCAGTGGGTTCTCAGGTCCAACAAAACATTGACATTATTGGAAATGAGATTCTTA  
AGAGAGGTTGCAATGTGAATGATAGAGATGGATTGACAGATATGACTCTTTTACATTATACCTGCAAATC  
TGGAGCTCATGGTATTGGTATGTGAAACAGCTGTAAAATTTGCAACTCAGCTTATTGACCTGGGAGCA  
GACATTAGTTTGGGAGTCGCTGGACAAACATGAATGCTTTGCATTATGCTGCTATTTTGTATGCCCTG  
AACTTATAAGAGTGATTTTAAAACGTCGAAACAAAAGATGTGGATGCCACTTGCAGTGATTTTAAATTT  
TGGAACAGCTTTGCATATTGCAGCATACAACCTTGTGTGCAGGTGCTGTGAAGTGCCTCTTGGAGCAGGGA  
GCAAATCCTGCATTTAGGAATGACAAAGGACAGATCCCTGCTGATGTTGTTCCAGACCCAGTAGATATGC  
CGTTAGAGATGGCTGACGCCGACGCCACTGCTAAGGAAATCAAGCAGATGCTTCTAGATGCGGTGCCTCT  
GTCATGTAACATCTCAAAGGCCATGCTCCCAAATTATGATCATGTCACTGGCAAGGCAATGCTTACGTCA  
CTTGGCCTGAAGTTGGGGGATCGTGTGTTATTGCAGGACAGAAGGTTGGTACATTAAGATTTTGTGGAA  
CAACTGAATTTGCAAGTGGGCGAGTGGGCTGGCATTGAACTGGATGAACCAGAAGGAAAAAATAATGGAA  
TGTTGGAAAAGTCCAGTACTTTAAATGTGCCCCCAAGTATGGTATTTTGCACCTCTTCAAAGATAAGT  
AAAGCAAAAAGTGAAGGAAAGATAAACACACACTCCTTCTACAAAAGCTGCTGTACCTCTCATCAGGT  
CCCAGAAAATTGACGTAGCTCATGTGACGTCAAAAGTAAATACTGGATTAATGACATCAAAAAAGATAG  
TGCTTCTGAGTCAACACTTTCATTGCCTCCTGGTGAAGAAGTAACTGACAGAGAAAAGATGTTGCC  
CTGCTTGATCTGTGACGAGCTGCTCCTTACATCTTCTTTGGAACACAGACAGAGCTACCCCAAGAAAC  
AGAATGCAATCAGCAGTAACAAGAAGACAATGAGCAAAAGCCCTTCCCTTTCATCCAGAGCCAGTCTGG  
TTTGAATCCTCAGCAACATCTACAGCAAATAATAGCCGTTGCGAGGGGAACTCCGCCTCGGAGAGAGA  
GTGTTAGTGGTAGGACAGAGACTGGGCACCATTAGGTTCTTTGGGACAACAACTTCGCTCCAGGATATT  
GGTATGGTATAGAGCTTGAAAAACCCATGGCAAGAATGATGGTTCAGTTGGAGGTGTGCAGTATTTTAG  
CTGTTCTCCAAGATATGGAATATTTGCTCCCCATCCAGGGTCAAAGAGTAACAGATCCCTGGATACC  
CTTTCAGAAAATTTCTTCAAATAAACAGAACCATCTTATCCTGGTTTTAGGAGAAGTTTTAGCACAACCT  
CTGCTTCTTCCAAAAGGAGATTAACAGAAGAAATGCTTTTTCCAAATCGAAAGCTGCTTTGCGTGCAG  
TTGGAGCAGCACCCACCCGAGGTGGCATTGAAGGGAGCGTGAAGCTGCACGAGGGGTCTCAGGTCTG  
CTCACGAGCTCCAATGAGATGGGTACTGTTAGGTATGTGGGCCCACTGACTTTGCTTCAGGTATCTGGC  
TTGGACTTGAGCTCCGAAGCGCAAGGGAAAAATGATGGGTGAGTGGGTGACAAGCGCTATTTACCTG  
TAAGCCGAACCATGGAGTCTTAGTTCGACCGAGCAGAGTGACCTATCGGGGAATTAATGGGTCAAACCT  
GTGGATGAGAATTGT

ACGCGTACGCGGCCGCTCGAGCAGAACTCATCTCAGAAGAGGATCTGGCAGCAAATGATATCCTGGATT  
ACAAGGATGACGACGATAAGGTTTAA

**Protein Sequence:** >RC223379 protein sequence  
 Red=Cloning site Green=Tags(s)

```

MTIEDLPDFPLEGNPLFGRYPFIFSASDTPVIFISISAAMPSPDCEFSFFDPNDASCQEILFDPKTSVSEL
FAILRQWVPQVQQNIDIIGNEILKRGCVNDRDGLTDMTLLHYTCKSGAHGIGD VETAVKFATQLIDLGA
DISLSRWTNMNALHYAAYFDVPELIRVILKTSKPKD VDATCSDFNFGTALHIAAYNLCAGAVKCLLEQG
ANPAFRNDKGQIPADVVPDPVDMPLMADAAATAKEIKQMLLDAVPLSCNISKAMPLPNYDHTGKAMLTS
LGLKLGDRVVIAGQKVGTLRF CGTTEFASGQWAGIELDEPEGKNNGSVGKVQYFKCAPKYGIFAPLSKIS
KAKGRRKNITHTPSTKAAVPLIRSQKIDVAHVTSKVNTGLMTSKKDSASESTLSLPPGEELKTVTEKDVA
LLGSVSSCSSTSSLEHRQSYPPKQNAISSNKTMSKSPSSRASAGLNSSATSTANNSRCEGELRLGER
VLVVGQRLGTIRFFGTTNFAPGYWYGIELEKPHGKNDGSGVGGVQYFSCSPRYGIFAPPSRVQRTDSLDT
LSEISSNKQNHSPGFRFSSTTSASSQKEINRRNAFSKSKAALRRSWSSTPTAGGIEGSVKLHEGSQVL
LTSSNEMGTVRYVGPTDFASGIWLGLELRSAGKNDGSGDKRYFTCKPNHGVLVRPSRVTYRGINSGKL
VDENC
  
```

TRTRPLEQKLI SEEDLAANDILDYKDDDDKV

**Chromatograms:** [https://cdn.origene.com/chromatograms/mk6465\\_f08.zip](https://cdn.origene.com/chromatograms/mk6465_f08.zip)

**Restriction Sites:** Sgfl-MluI

**Cloning Scheme:**

Cloning sites used for ORF Shuttling:



\* The last codon before the Stop codon of the ORF

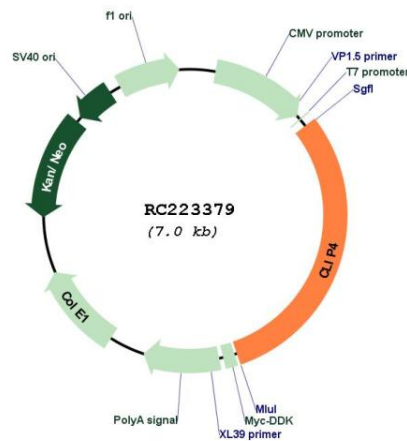
**ACCN:** NM\_024692

**ORF Size:** 2115 bp

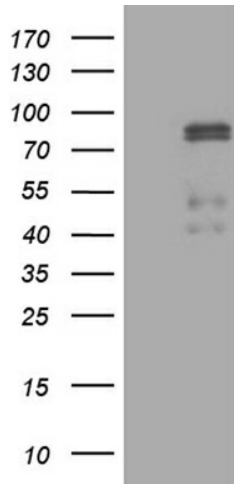
**OTI Disclaimer:** The molecular sequence of this clone aligns with the gene accession number as a point of reference only. However, individual transcript sequences of the same gene can differ through naturally occurring variations (e.g. polymorphisms), each with its own valid existence. This clone is substantially in agreement with the reference, but a complete review of all prevailing variants is recommended prior to use. [More info](#)

**OTI Annotation:** This clone was engineered to express the complete ORF with an expression tag. Expression varies depending on the nature of the gene.

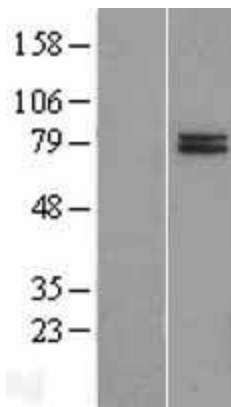
<b>Components:</b>	The ORF clone is ion-exchange column purified and shipped in a 2D barcoded Matrix tube containing 10ug of transfection-ready, dried plasmid DNA (reconstitute with 100 ul of water).
<b>Reconstitution Method:</b>	<ol style="list-style-type: none"> <li>1. Centrifuge at 5,000xg for 5min.</li> <li>2. Carefully open the tube and add 100ul of sterile water to dissolve the DNA.</li> <li>3. Close the tube and incubate for 10 minutes at room temperature.</li> <li>4. Briefly vortex the tube and then do a quick spin (less than 5000xg) to concentrate the liquid at the bottom.</li> <li>5. Store the suspended plasmid at -20°C. The DNA is stable for at least one year from date of shipping when stored at -20°C.</li> </ol>
<b>RefSeq:</b>	<u>NM_024692.3, NP_078968.3</u>
<b>RefSeq Size:</b>	4300 bp
<b>RefSeq ORF:</b>	2118 bp
<b>Locus ID:</b>	79745
<b>UniProt ID:</b>	<u>Q8N3C7</u>
<b>Cytogenetics:</b>	2p23.2
<b>Domains:</b>	CAP_GLY, ANK
<b>MW:</b>	76.3 kDa

**Product images:**


Circular map for RC223379



HEK293T cells were transfected with the pCMV6-ENTRY control (Cat# [PS100001], Left lane) or pCMV6-ENTRY CLIP4 (Cat# RC223379, Right lane) cDNA for 48 hrs and lysed. Equivalent amounts of cell lysates (5 ug per lane) were separated by SDS-PAGE and immunoblotted with anti-CLIP4 (Cat# [TA809436])(1:2000). Positive lysates [LY411152] (100ug) and [LC411152] (20ug) can be purchased separately from OriGene.



Western blot validation of overexpression lysate (Cat# [LY411152]) using anti-DDK antibody (Cat# [TA50011-100]). Left: Cell lysates from untransfected HEK293T cells; Right: Cell lysates from HEK293T cells transfected with RC223379 using transfection reagent MegaTran 2.0 (Cat# [TT210002]).