

Product datasheet for RC223367

PPP1R14B (NM_138689) Human Tagged ORF Clone

Product data:

Product Type: Expression Plasmids
Product Name: PPP1R14B (NM_138689) Human Tagged ORF Clone
Tag: Myc-DDK
Symbol: PPP1R14B
Synonyms: PHI-1; PLCB3N; PNG; SOM172
Mammalian Cell Selection: Neomycin
Vector: pCMV6-Entry (PS100001)
E. coli Selection: Kanamycin (25 ug/mL)
ORF Nucleotide Sequence: >RC223367 ORF sequence
 Red=Cloning site Blue=ORF Green=Tags(s)

TTTTGTAATACGACTCACTATAGGGCGGCCGGAATTCGTCGACTGGATCCGGTACCGAGGAGATCTGCC
 GCCCGCATCGCC

ATGGCGGACAGCGGCACCGCGGGGGCGCGGCGTTGGCGGCCCGGCCCGGGCCGGGCAGTGGCGGCC
 CAGGACCACGCGTCTACTTTTCAGAGCCCCCGGGCCGCGAGGAGGGCCCGGGCGGGCGGACGATGA
 GGGCCAGTGAGGCGCAAGGGAAGGTACCGTCAAGTATGACCGCAAGGAGCTACGGAAGCGCCTCAAC
 CTAGAGGAGTGGATCCTGGAGCAGCTACGCGCCTCTACGACTGCCAGGAAGAGGAGATCCAGAAGTGG
 AGATTGACGTGGATGAGCTCCTGGACATGGAGAGTGACGATGCCCGGGCTGCCAGGTCAAGGAGCTGCT
 GGTGACTGTTACAAACCACAGAGGCCTTCATTTCTGGCTGCTGGACAAGATCCGGGGCATGCAGAAG
 CTGAGCACACCCAGAAGAAG

AGCGGACCGACGCGTACGCGGCCGCTCGAGCAGAACTCATCTCAGAAGAGGATCTGGCAGCAAATGATATCC
 TGGATTACAAGGATGACGACGATAAGGTTTAA

Protein Sequence: >RC223367 protein sequence
 Red=Cloning site Green=Tags(s)

MADSGTAGGAALAAPAPGPGSGGPGPRVYFQSPPGAAGEGPGGADDEGPVRRQGVTVKYDRKELRKRLN
 LEEWILEQLTRL YDCQEEEIPELEIDVDELLDMESDDARAARVKELLVDCYKPTAFISGLLDKIRGMQK
 LSTPQKK

SGPTRRTRPLEQKLI SEEDLAANDILDYKDDDDKV

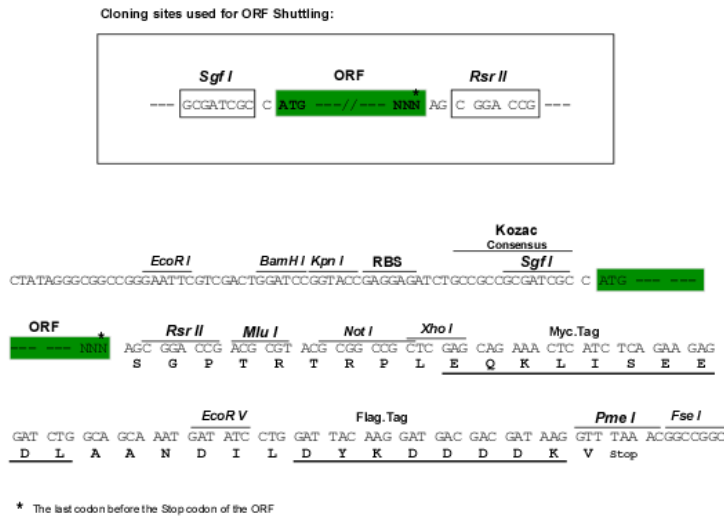
Chromatograms: https://cdn.origene.com/chromatograms/mk6616_h09.zip



[View online »](#)

Restriction Sites: SgfI-RsrII

Cloning Scheme:



ACCN: NM_138689

ORF Size: 441 bp

OTI Disclaimer: The molecular sequence of this clone aligns with the gene accession number as a point of reference only. However, individual transcript sequences of the same gene can differ through naturally occurring variations (e.g. polymorphisms), each with its own valid existence. This clone is substantially in agreement with the reference, but a complete review of all prevailing variants is recommended prior to use. [More info](#)

OTI Annotation: This clone was engineered to express the complete ORF with an expression tag. Expression varies depending on the nature of the gene.

Components: The ORF clone is ion-exchange column purified and shipped in a 2D barcoded Matrix tube containing 10ug of transfection-ready, dried plasmid DNA (reconstitute with 100 ul of water).

Reconstitution Method:

1. Centrifuge at 5,000xg for 5min.
2. Carefully open the tube and add 100ul of sterile water to dissolve the DNA.
3. Close the tube and incubate for 10 minutes at room temperature.
4. Briefly vortex the tube and then do a quick spin (less than 5000xg) to concentrate the liquid at the bottom.
5. Store the suspended plasmid at -20°C. The DNA is stable for at least one year from date of shipping when stored at -20°C.

RefSeq: [NM_138689.3](#)

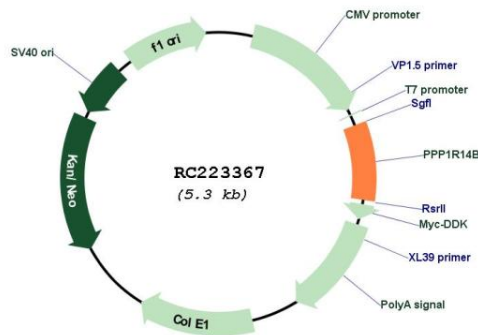
RefSeq Size: 1038 bp

RefSeq ORF: 444 bp

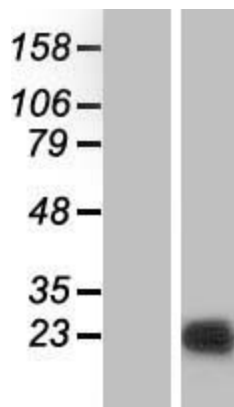
Locus ID: 26472

UniProt ID: [Q96C90](#)
 Cytogenetics: 11q13.1
 Domains: PP1_inhibitor
 MW: 15.9 kDa
 Gene Summary: Inhibitor of PPP1CA. Has over 50-fold higher inhibitory activity when phosphorylated (By similarity).[UniProtKB/Swiss-Prot Function]

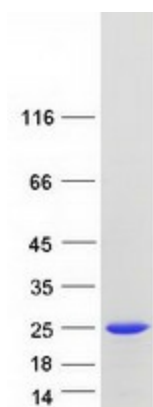
Product images:



Circular map for RC223367



Western blot validation of overexpression lysate (Cat# [LY408544]) using anti-DDK antibody (Cat# [TA50011-100]). Left: Cell lysates from untransfected HEK293T cells; Right: Cell lysates from HEK293T cells transfected with RC223367 using transfection reagent MegaTran 2.0 (Cat# [TT210002]).



Coomassie blue staining of purified PPP1R14B protein (Cat# [TP323367]). The protein was produced from HEK293T cells transfected with PPP1R14B cDNA clone (Cat# RC223367) using MegaTran 2.0 (Cat# [TT210002]).