

Product datasheet for RC223360

TLL1 (NM_012464) Human Tagged ORF Clone

Product data:

Product Type:	Expression Plasmids
Product Name:	TLL1 (NM_012464) Human Tagged ORF Clone
Tag:	Myc-DDK
Symbol:	TLL1
Synonyms:	ASD6; TLL
Mammalian Cell Selection:	Neomycin
Vector:	pCMV6-Entry (PS100001)
E. coli Selection:	Kanamycin (25 ug/mL)
ORF Nucleotide Sequence:	>RC223360 representing NM_012464 Red=Cloning site Blue=ORF Green=Tags(s)

TTTTGTAATACGACTCACTATAGGGCGGCCGGAATTCGTCGACTGGATCCGGTACCGAGGAGATCTGCC
GCC**CGATCGCC**

ATGGGGTTGGGAACGCTTTCCCGAGGATGCTCGTGTGGCTGGTGGCCTCGGGGATTGTTTTCTACGGG
AGCTATGGGTCTGCGCTGGCCTCGATTATGATTACACTTTTGATGGGAACGAAGAGGATAAAACAGAGAC
TATAGATTACAAGGACCCGTGTAAGCCGCTGTATTTGGGGCGATATTGCCTTAGATGATGAAGACTTA
AATATCTTTCAAATAGATAGGACAATTGACCTTACGCAGAACCCTTTGGAAACCTTGACATACCACAG
GTGGACTTGGAGACCATGCTATGTCAAAGAAGCGAGGGGCCCTACCACTTATAGACAGGATAAGAAG
AATTGGCTTTGGCTTGGAGCAAAACAACACAGTTAAGGGAAAAGTACCTCTACAATTCTCAGGGCAAAAT
GAGAAAAATCGAGTTCCAGAGCCGCTACATCAAGAACGAAAGAATATGGCCTGGAGGCGTTATTCCTT
ATGTTATAGGAGGAACTTCACTGGCAGCCAGAGAGCCATGTTCAAGCAGGCCATGAGGCACTGGGAAAA
GCACACATGTGTGACTTTATAGAAAGAAGTGAAGAGAGTTACATTGTATTCACCTATAGGCCCTTGT
GGATGCTGCTCCTATGTAGGTCGGCGAGGAAATGGACCTCAGGCAATCTCTATCGGCAAGAACTGTGATA
AATTTGGGATTGTTGTTTCATGAATTGGGTCATGTGATAGGCTTTTGGCATGAACACACAAGACCAGATCG
AGATAACCACGTAACATCATAAGAGAAAAATCCAGCCAGGTCAAGAGTACAATTTTCTGAAGATGGAG
CCTGGAGAAGTAACTCACTTGGAGAAAGATGATTTTCGACAGTATCATGCATATGCCAGGAACACCT
TCTCAAGGGGATGTTTTCTGGATACCATTCTCCCCTCCCGTATGATAATGGCATACGTCCTGCAATTGG
TCAGCGAACCCTCTAAGCAAAGGAGATATCGCACAGGCAAGAAAGCTGTATAGATGTCCAGCATGTGGA
GAACTCTACAAGAATCCAATGGCAACCTTTCCTCTCCAGGATTTCCCAATGGCTACCCTTCTTACACAC
ACTGCATCTGGAGAGTTTCTGTGACCCAGGGGAGAAGATTGTTTTAAATTTTACAACGATGGATCTATA
CAAGAGTAGTTTGTGCTGGTATGACTATATTGAAGTAAGAGACGGGACTGGAGAAAATCACCTCTCCTT
GGTAGATTCTGTGGGACAAATGCCTGAAGTTCTTACTTCTACAGACAGCAGAATGTGGATTGAGTTTC
GTAGCAGCAGTAATTGGGTAGGAAAAGGCTTTGCAGCTGTCTATGAAGCGATCTGTGGAGGTGAGATACG
TAAAAATGAAGGACAGATTCACTCTCCAATTATCCTGATGACTATCGCCCGATGAAAGAATGTGTGTGG



AAAATAACAGTGTCTGAGAGCTACCACGTCGGGCTGACCTTTCAGTCCTTTGAGATTGAAAGACATGACA
 ATTGTGCTTATGACTACCTGGAAGTTAGAGATGGAACCACTGAAAATAGCCCTTTGATAGGGCGTTTCTG
 TGGTTATGACAAACCTGAAGACATAAGATCTACCTCCAATACTTTGTGGATGAAGTTTGTCTGACGGA
 ACTGTGAACAAAGCAGGGTTTGTCTAACTTTTTAAAGAGGAAGATGAGTGTGCCAACCTGACCGTG
 GAGGCTGTGAGCAGCGATGTCTGAACACTCTGGGCAGTACCAGTGTGCCTGTGAGCCTGGCTATGAGCT
 GGGCCAGACAGAAGGAGCTGTGAAGCTGCTTGTGGTGGACTTCTACCAAATTAACGGCACCAATAACC
 ACCCTGGCTGGCCCAAGGAGTACCCTCCTAATAAGAACTGTGTGTGGCAAGTGTGCACCAACCCAGT
 ACAGAATTTCTGTGAAGTTTGTGTTTTTGAATTGGAAGCAATGAAGTTTGCAAATATGATTATGTGGA
 GATCTGGAGTGGTCTTCTCTGAGTCTAACTGCATGGCAAATCTGTGGCGCTGAAGTGCCTGAAGTG
 ATCACATCCCAGTTCAACAATATGAGAATTGAATCAAATCTGACAATACTGTATCCAAGAAGGGCTTCA
 AAGCACATTTTTCTCAGACAAAGATGAATGCTCTAAGGATAATGGTGGATGTCAGCAGCAATGTGTCAA
 CACGATGGGGAGCTACATGTGTCAATGCCGTAATGGATTTGTGCTACATGACAATAAACATGATTGCAAG
 GAAGCTGAGTGTGAACAGAAGATCCACAGTCCAAGTGGCCTCATCACCAGTCCCAACTGGCCAGACAAGT
 ACCCAAGCAGAAAGAATGCACTTGGGAAATCAGCGCCACTCCTGGCCACCGAATCAAATAGCCTTTAG
 TGATTTGAGATTGAGCAGCATCAAGAATGTGCTTATGACCACTAGAAGTATTTGATGGAGAAACAGAA
 AAGTACCAGATTCTGGACGACTGTGTGCAACAAGATACCAGATCCCCTTGTGGCTACTGGAAATAAAA
 TGTGTTGTCGGTTTGTCTGATGCATCTGTTCAAAGAAAAGGCTTTCAAGCTACACATTCTACAGAGTG
 TGGCGGACGATTGAAAGCAGAATCAAAACCAAGAGATCTGTAATCACATGCTCAGTTTGGTATAACAAC
 TACCCAGGACAGGTTGACTGTGAATGGCTATTAGTATCAGAACGGGGCTCTGACTTGAATTATCCTTCC
 AGACATTTGAAGTGGAGGAAGAAGCAGACTGTGGCTATGACTATGTGGAGCTCTTTGATGGTCTTGATTC
 AACAGCTGTGGGGCTTGGTCGATTCTGTGGATCCGGGCCACCAGAAGAGATTTATCAATTGGAGATTCA
 GTTTTAATTCATTTCCACACTGATGACACAATCAACAAGAAGGGATTTTCATATAAGATACAAAAGCATAA
 GATATCCAGATACCACACATACCAAAAAA

ACGCGTACGCGGCCGCTCGAGCAGAACTCATCTCAGAAGAGGATCTGGCAGCAAATGATATCCTGGATT
 ACAAGGATGACGACGATAAGGTTTAA

Protein Sequence:

>RC223360 representing NM_012464
 Red=Cloning site Green=Tags(s)

MGLGTLSPRMLVWLVASGIVFYGELWVCAGLDYDYTFDGNEDKTETIDYKDPCKAAVFWGDIALLDDEDL
 NIFQIDRTIDLTONPFGNLGHTTGGLDHMSKRGALYQLIDRIRRIQFGLQNNVTGKGVPLQFSGQN
 EKNRVPRAATSRTERIWPGGVIPPYVIGGNFTGSQRAMFKQAMRHWEKHTCVTFIERSDEESYIVFTYRPC
 GCCSYVGRNGPQAIISIGNCDKFGIVVHELGHVIGFWHEHTRPDRDNHVTIIRENIQPGQEYNFLKME
 PGEVNSLGERYDFDSIMHYARNTFSRGMFLDTILPSRDDNGIRPAIGQRTRL SKGDIAQARKLYRCPACG
 ETLQESNGLSSPGFPNGYPSYTHCIWRVSVTPGEKIVLNFTTMDLYKSSLCWYDYIEVRDGYWRKSPLL
 GRFCGDKLPEVL TSTDSRMWIEFRSSSNWVGKFAAVYEAI CGGEIRKNEGQIQSPNYPDDYRPMKECVW
 KITVSESYHVGLTFQSFIEIHRDNCAYDYLEVRDGTSENSPLIGRF CGYDKPEDIRSTSNTLWMKFVSDG
 TVNKAGFAANFFKEEDECAKPDRCGCEQRCLNTLGSYQACEPGYELGPDRRSCEAACGGLLTKLNGTIT
 TPGWPKEYPPNKNVCVQVVAAPTQYRISVKFEFFLEEGNEVCKYDYVEIWSGLSSESKLHGKFCGAEVPEV
 ITSQFNNMRIEFKSDNTVSKKGFKAHFFSDKDECSKDNGGCQHECVNTMGSYMCQCRNGFVLHDNKHDK
 EAECEQKIHSPSGLITSPNWDKYP SRKECTWEISATPGHRIKLAFFSEFIEQHQEACAYDHLEVFDETE
 KSPILGR LCGNKIPDPLVATGNKMFVRFVSDASVQRKGFQATHSTECGRLKAESKPRDL YSHAQFGDNN
 YPGQVDCEWLLVSRGSRLELSFQTFEVEEEADCGYDYVELFDGLDSTAVGLGRFCGSGPPEE IYSIGDS
 VLIHFHTDDTINKKGFHIRYKSIRYPDTTHTKK

TRTRPLEQKLI SEEDLAANDILDYKDDDDKV

Chromatograms:

https://cdn.origene.com/chromatograms/mg3422_b05.zip

Restriction Sites:

Sgfl-Mlul

Cloning Scheme:


ACCN: NM_012464

ORF Size: 3039 bp

OTI Disclaimer: The molecular sequence of this clone aligns with the gene accession number as a point of reference only. However, individual transcript sequences of the same gene can differ through naturally occurring variations (e.g. polymorphisms), each with its own valid existence. This clone is substantially in agreement with the reference, but a complete review of all prevailing variants is recommended prior to use. [More info](#)

OTI Annotation: This clone was engineered to express the complete ORF with an expression tag. Expression varies depending on the nature of the gene.

Components: The ORF clone is ion-exchange column purified and shipped in a 2D barcoded Matrix tube containing 10ug of transfection-ready, dried plasmid DNA (reconstitute with 100 ul of water).

- Reconstitution Method:**
1. Centrifuge at 5,000xg for 5min.
 2. Carefully open the tube and add 100ul of sterile water to dissolve the DNA.
 3. Close the tube and incubate for 10 minutes at room temperature.
 4. Briefly vortex the tube and then do a quick spin (less than 5000xg) to concentrate the liquid at the bottom.
 5. Store the suspended plasmid at -20°C. The DNA is stable for at least one year from date of shipping when stored at -20°C.

Note: Plasmids are not sterile. For experiments where strict sterility is required, filtration with 0.22um filter is required.

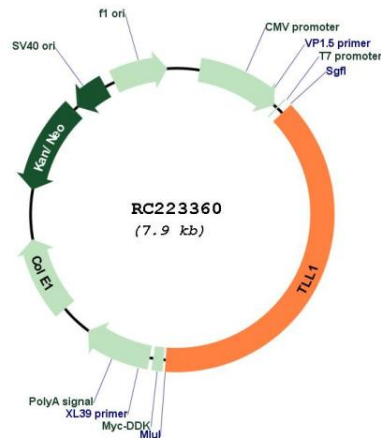
RefSeq: [NM_012464.5](#)

RefSeq Size: 6654 bp

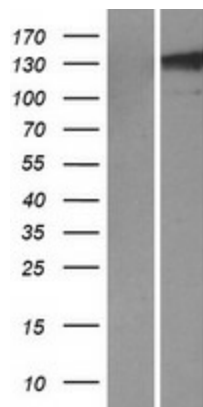
RefSeq ORF: 3042 bp
Locus ID: 7092
UniProt ID: [O43897](#)
Cytogenetics: 4q32.3
Protein Families: Druggable Genome, Protease, Secreted Protein
MW: 114.5 kDa

Gene Summary: This gene encodes an astacin-like, zinc-dependent, metalloprotease that belongs to the peptidase M12A family. This protease processes procollagen C-propeptides, such as chordin, pro-biglycan and pro-lysyl oxidase. Studies in mice suggest that this gene plays multiple roles in the development of mammalian heart, and is essential for the formation of the interventricular septum. Allelic variants of this gene are associated with atrial septal defect type 6. Alternatively spliced transcript variants encoding different isoforms have been found for this gene. [provided by RefSeq, Mar 2011]

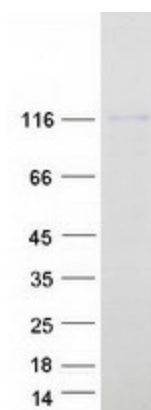
Product images:



Circular map for RC223360



Western blot validation of overexpression lysate (Cat# [LY415743]) using anti-DDK antibody (Cat# [TA50011-100]). Left: Cell lysates from untransfected HEK293T cells; Right: Cell lysates from HEK293T cells transfected with RC223360 using transfection reagent MegaTran 2.0 (Cat# [TT210002]).



Coomassie blue staining of purified TLL1 protein (Cat# [TP323360]). The protein was produced from HEK293T cells transfected with TLL1 cDNA clone (Cat# RC223360) using MegaTran 2.0 (Cat# [TT210002]).