

Product datasheet for **RC223359**

USP26 (NM_031907) Human Tagged ORF Clone

Product data:

Product Type:	Expression Plasmids
Product Name:	USP26 (NM_031907) Human Tagged ORF Clone
Tag:	Myc-DDK
Symbol:	USP26
Mammalian Cell Selection:	Neomycin
Vector:	pCMV6-Entry (PS100001)
E. coli Selection:	Kanamycin (25 ug/mL)



[View online »](#)

ORF Nucleotide Sequence:

>RC223359 ORF sequence
 Red=Cloning site Blue=ORF Green=Tags(s)

TTTTGTAATACGACTCACTATAGGGCGGCCGGAATTCGTCGACTGGATCCGGTACCGAGGAGATCTGCC
 GCC**CGCATCGCC**

ATGGCTGCCTATTCTACGTGGTTTTGTCCAATAGGGAAGTCAAGACTGGGATATCTAAGTCAAAG
 AAGCATTCAATGAAGCAGTGAAAAGAAAAGAAAGATAGACTGGTGTGTATTTCAAAGTGGAAAATA
 TAGCACTTTTCGGCTAAGTGATAATATTTCAAATGTAGTCCTTAAATCCTATAGAGGAAACAAAATCAC
 CTGCATTTAACTTTACAAAATAAATGGCTTGTATTGAAGGATTATCCTCCACAGATGCTGAACAAT
 TGAAGATATTCTGGACAGAGTTCATCAAACGAGGTTACGCCACCTGTGAGACCTGGTAAGGGTGGGAG
 TGTCTTTCTAGCACAACACAGAAGGAAATCAACAAAACCTTATTCCACAAAGTTGATGAGAAATCAAGT
 AGCAAATCTTTGAGATAGCAAAGGAAGTGGACAGGTGCCTTCAGAGGATGCCTTTGCTTACATCAA
 AATTGACACTTACTTGGGAGAGTTATCAGAAAATCAGCACAAGAAGAGGAAAAGAAATGCTCTCATCTAG
 CTCAGAGATGAATGAGGAATTCCTGAAAGAAAATTAATCTGTAGAATACAAGAAATCCAAGGCAGATTGT
 TCGAGGTGTGAAGCTATAATCGAGAGAAAATTAAGTGAAGTAAAAGAGTTAGAAGAGAATAAGAAATTTGG
 AATGTGAATCTTCATGCATCATGAACGCCACTGGAAATCCTTACCTAGATGACATTGGTCTTCTCCAAGC
 TCTCACTGAGAAAATGGTTTTGGTATTTCTGTTACAACAAGGGTATAGTGACGGTTACACAAAGTGGGAT
 AAATTAAGAACTATTTTTGAATTATTTCCAGAGAAAATATGCCACGGCTCCCAATTTGGGAAACACCT
 GTTATATGAATGCAGTGTACAGTCTCTACTTTCAATCCCATCGTTTGTGATGATTTACTTAATCAGAG
 TTTCCCATGGGGTAAAATTTCCCTTAATGCTCTTACCATGTGCTTGGCACGGCTACTTTTTTTAAAGAT
 ACCTATAATATAGAAATCAAGGAGATGTTACTCTTGAATCTTAAAAGGCCATTTTCAGCAGCTGCAGAGA
 TATTCATGGCAATGCACAGAACGATGCTCAGTGTGTTTGTAGTCACTGTTTATAGTCAACTGAAAGATA
 CATGGAAAAAATCAACCAATTTGGAAGCCTAAAAGTGAATTTGGGGAAGATAATTTTCTAAACAGGTT
 TTTGCTGATGATCCTGACACCAGTGGGTTTTCTGCCCTGTCATTACTAATTTTGTAGTTAGAGTTGTTGC
 ACTCCATTGCTGTAAAGCTTGTGGTCAAGTATTCTCAAGACAGAACTGAATAATTACCTCTCCATCAA
 CCTTCCCAAAGAATAAAAGCACATCCTTCATCTATTCAGTCTACTTTTGATCTTTTTTTTGGAGCAGAA
 GAGCTTGAGTATAAATGTGCAAAATGTGAGCACAAGACTTCCGTTGGAGTGCCTCATTCAAGTAGGCTAC
 CTAGAATCCTTATTGTTACCTCAAACGCTATAGCTTGAATGAGTTTTGTGCATTAAAGAAGAATGACCA
 GGAAGTCATCATTCCAATATTTAAAGGTGCTTCTCATTGCAATGAAGGCACCAGACCACCTCTTCCC
 TTGAGTGAGGATGGAGAAATTACAGATTTCCAATTAATAAAGTTATTCGAAAGATGACTTCTGAAACA
 TCAGTGTATCATGGCCTGCAACAAGGAATCCAAGATATCCTGGCTCCACACATTGGATCAGATAAGGA
 GTCTGAACAAAAAAGGCCAGACAGTCTTTAAAGGGCAAGCAGAAGACAGCAGCAAAAGTACCTTGGAA
 AAAAAATCTAAACCAATGAGCTAGAATCTGTATACTCAGGAGATCGAGCATTCAATGAAAAAGAACCGT
 TAGCTCACTTAATGACGTATCTGGAAGATACCTCACTTTGTCAAGTCCACAAAGCTGGAGGTAACCTGC
 CAGCAGCCAGGCACACCTCTCTCAAAGTTGACTTTCAAACAGTGGCCGAAAATCCAAAACGAAAGAAA
 TATGTGAAAACAGTAAGTTTGTAGCTTTTGTAGGATTATCAATCCTACTAAAGATTTGTATGAAGATA
 AAAATATCAGAATTCAGAAAGATTCAAAAAGTGTCTGAACAGACTCAGCAGTGTGACGGTATGAGAAT
 CTGTGAACAAGCCCTCAGCAGGCACTGCCTCAAAGCTTTCCAAAGCCAGGCACCCAGGGGCACACAAAG
 AACCTCCTAAGACCTACAAAATTAATCTACAGAAGTCTAACAGGAATTCCTACTTGCCTGGGTTCCA
 ATAAGAATCCAAGAAACAAAGACATTTTATAGATAAGATAAAAATCTAAAGCCAAGGAAAACAAAAGAAATGA
 TGATAAGGGAGATCATACCTACCGGCTCATTAGTGTGTCAGCCATCTTGGGAAGACTCTAAAGTCAAGC
 CATTATATCTGTGATGCCTATGACTTTGAGAAACAGATCTGGTTCACCTACGATGATATGCGGGTGTAG
 GTATCCAGGAGGCCAGATGCAGGAGGATAGGCGTTGCACTGGGTACATCTTCTTTTACATGCATAATGA
 GATCTTTGAAGAGATGTTGAAAAGAGAAGAGAATGCCAGCTTAATAGCAAGGAGGTAGAGGAGACCCTT
 CAGAAGGAA

ACGCGTACGCGGCCGCTCGAGCAGAAACTCATCTCAGAAGAGGATCTGGCAGCAAATGATATCCTGGATT
 ACAAGGATGACGACGAT AAGGTTTAA

Protein Sequence: >RC223359 protein sequence
 Red=Cloning site Green=Tags(s)

MAALFLRGFVQIGNCKTGISKSKEAFIEAVERKKKDRLLVLYFKSGKYSTFRLSDNIQNVVLKSYRGNQNH
 LHLTLQNNGLFIEGLSSTDAEQLKIFLDRVHQNEVQPPVVRPGKGGSVFSTTQKEINKTSFHKVDEKSS
 SKSFEIAKGGTGVLRMPLLSKLTTCGELSENQHKRKRMLSSSEMNEEFLKENNSVEYKSKADC
 SRCVSYNREKQLKLEENKKECESSCIMNATGNPYLDDIGLLQALTEKMLVFLLLQQGYSDGYTKWD
 KKLFFELFPEKICHGLPNLGNTCYMNAVLQSLLSIPSFADDLLNQSFPGKIPLNALTMLCLARLLFFKD
 TYNIEIKEMLLNLKKAISAAAEIFHGNAQNDAHEFLAHLCDQLKDNMEKLNITWPKSEFGEDNFPKQV
 FADDPDTSFGFSCPVITNFELELLHSIACKACGQVILKTELNNYLSINLPQRIKAHPSSIQSTFDLFFGAE
 ELEYKCAKCEHKTSVGVSFRLPRILIVHLKRYSLNEFCALKKNDQEVIIISKYLKVSCHNEGTRPPLP
 LSEGEITDFQLLKVIRKMTSGNISVSWPATKESKDILAPHIGSDKESQKKGQTVFKGASRRQQQKYL
 KNSKPNELESVYSGDRAFIEKEPLAHLMTYLEDTSLCQFHKAGGKPASSPGTPLSKVDFQTVPENPKRKK
 YVKTSKFVAFDRIINPTKDLIEDKNIRIPERFQKVSEQTQCCDGMRIQEQAPQALPQSFPKPTQGHK
 NLLRPTKLNLQKSNRNSLLALGSNKNPRNKDILDKIKSAKETKRNDKGDHTYRLISVVSHLGKTLKSG
 HYICDAYDFEKQIWFTYDDMRVLGIQEAQMQRRTGYIFFYMHNEIFEMLKRENAQLNSKEVEETL
 QKE

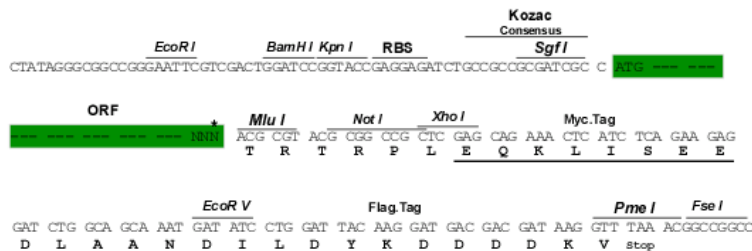
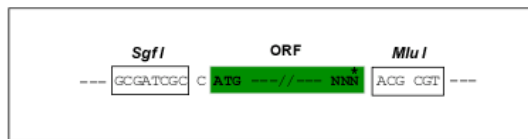
TRTRPLEQKLISEEDLAANDILDYKDDDDKV

Chromatograms: https://cdn.origene.com/chromatograms/mk6687_d02.zip

Restriction Sites: SgfI-MluI

Cloning Scheme:

Cloning sites used for ORF Shuttling:

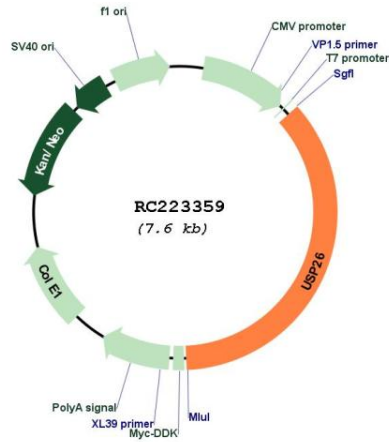


* The last codon before the Stop codon of the ORF

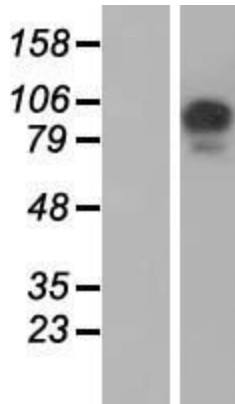
ACCN: NM_031907

ORF Size:	2739 bp
OTI Disclaimer:	The molecular sequence of this clone aligns with the gene accession number as a point of reference only. However, individual transcript sequences of the same gene can differ through naturally occurring variations (e.g. polymorphisms), each with its own valid existence. This clone is substantially in agreement with the reference, but a complete review of all prevailing variants is recommended prior to use. More info
OTI Annotation:	This clone was engineered to express the complete ORF with an expression tag. Expression varies depending on the nature of the gene.
Components:	The ORF clone is ion-exchange column purified and shipped in a 2D barcoded Matrix tube containing 10ug of transfection-ready, dried plasmid DNA (reconstitute with 100 ul of water).
Reconstitution Method:	<ol style="list-style-type: none">1. Centrifuge at 5,000xg for 5min.2. Carefully open the tube and add 100ul of sterile water to dissolve the DNA.3. Close the tube and incubate for 10 minutes at room temperature.4. Briefly vortex the tube and then do a quick spin (less than 5000xg) to concentrate the liquid at the bottom.5. Store the suspended plasmid at -20°C. The DNA is stable for at least one year from date of shipping when stored at -20°C.
RefSeq:	NM_031907.2
RefSeq Size:	2794 bp
RefSeq ORF:	2742 bp
Locus ID:	83844
UniProt ID:	Q9BXU7
Cytogenetics:	Xq26.2
MW:	104 kDa
Gene Summary:	This gene encodes a member of the ubiquitin-specific processing (UBP) family of proteases and is a deubiquitinating enzyme (DUB) with His and Cys domains. It is specifically expressed in testis tissue. Mutations in this gene have been associated with Sertoli cell-only syndrome and male infertility. [provided by RefSeq, Jul 2008]

Product images:



Circular map for RC223359



Western blot validation of overexpression lysate (Cat# [LY410453]) using anti-DDK antibody (Cat# [TA50011-100]). Left: Cell lysates from untransfected HEK293T cells; Right: Cell lysates from HEK293T cells transfected with RC223359 using transfection reagent MegaTran 2.0 (Cat# [TT210002]).