

## Product datasheet for **RC223333**

### **RALY (NM\_007367) Human Tagged ORF Clone**

#### Product data:

**Product Type:** Expression Plasmids  
**Product Name:** RALY (NM\_007367) Human Tagged ORF Clone  
**Tag:** Myc-DDK  
**Symbol:** RALY  
**Synonyms:** HNRPCL2; P542  
**Mammalian Cell Selection:** Neomycin  
**Vector:** pCMV6-Entry (PS100001)  
**E. coli Selection:** Kanamycin (25 ug/mL)  
**ORF Nucleotide Sequence:** >RC223333 representing NM\_007367  
**Red=Cloning site Blue=ORF Green=Tags(s)**

TTTTGTAATACGACTCACTATAGGGCGGCCGGAATTCGTCGACTGGATCCGGTACCGAGGAGATCTGCC  
GCC**CGATCGCC**

ATGTCCTGAAGCTTCAGGCAAGCAATGTAACCAACAAGAATGACCCCAAGTCCATCAACTCTCGAGTCT  
TCATTGGAACCTCAACACAGCTCTGGTGAAGAAATCAGATGTGGAGACCATCTTCTCTAAGTATGGCCG  
TGTGGCCGGCTGTTCTGTGCACAAGGGCTATGCCTTTGTTCACTCAATGAGCGCCATGCCCGGCA  
GCTGTGCTGGGAGAGAATGGCGGGTGTGGCCGGCAGACCCTGGACATCAACATGGCTGGAGAGCCTA  
AGCCTGACAGACCAAGGGGCTAAAGAGAGCAGCATCTGCCATATACAGGCTCTTCGACTACCGGGGCC  
TCTGTGCGCCGTGCCAGTGCCAGGGCGGTCCCTGTGAAGCGACCCCGGTCCAGTCCCTTTGGTCCGG  
CGTGTCAAACCTAACGTACCTGTCAAGCTCTTTGCCCGCTCCACAGCTGTCAACCACAGCTCAGCCAAGA  
TCAAGTTAAAGAGCAGTGAAGTGCAGGCGCATCAAGACGGAGCTGACACAGATCAAGTCCAATATCGATGC  
CCTGCTGAGCCGCTTGGAGCAGATCGCTGCGGAGCAAAAGGCCAATCCAGATGGCAAGAAGAAGGGTGT  
GGAGGTGGCGCCGGCGGGCGGGTGGTGGCAGCGGTGGCGGTGGCAGTGGTGGTGGCGGTGGCG  
GTGGCAGCAGCCGGCCACCAGCCCCCAAGAGAACAACAATCTGAGGCAGGCCCTGCCAGGGGGAAGC  
ACGGACCCGAGACGAGCGGATGAGGAAGGGCTCTGACACACAGCGAGGAAGAGCTGGAACACAGCCAG  
GACACAGACCGGATGATGGGCCTTGAC

**ACGCGTACGCGGGCCTCGAGCAGAAACTCATCTCAGAAGAGGATCTGGCAGCAAATGATATCCTGGATT**  
**ACAAGGATGACGACGATAAGGTTAA**



[View online »](#)

**Protein Sequence:** >RC223333 representing NM\_007367  
 Red=Cloning site Green=Tags(s)

MSLKLQASNVTNKNDPKSINSRVFIGNLNTALVKKSDVETIFSKYGRVAGCSVHKGYAFVQYSNERHARA  
 AVLGENGRVLAGQTLIDINMAGEPKPDRPKGLKRAASAIYRLFYDRGRLSPVPVPRAPVPKRPRVTVPLVR  
 RVKTNVPVKLFARSTAVTTSSAKIKLKSSSELQAIKTELQIKSNIDALLSRLEQIAAEQKANPDGKKKGD  
 GGGAGGGGGGGGGGGGGGGSSRPPAPQENTTSEAGLPQGEARTRDDGDDEGLLTHSEEELEHSQ  
 DTDADDGALQ

TRTRPLEQKLISEEDLAANDILDYKDDDDKV

**Restriction Sites:** SgfI-MluI

**Cloning Scheme:**

Cloning sites used for ORF Shuttling:



\* The last codon before the Stop codon of the ORF

**ACCN:** NM\_007367

**ORF Size:** 870 bp

**OTI Disclaimer:** The molecular sequence of this clone aligns with the gene accession number as a point of reference only. However, individual transcript sequences of the same gene can differ through naturally occurring variations (e.g. polymorphisms), each with its own valid existence. This clone is substantially in agreement with the reference, but a complete review of all prevailing variants is recommended prior to use. [More info](#)

**OTI Annotation:** This clone was engineered to express the complete ORF with an expression tag. Expression varies depending on the nature of the gene.

**Components:** The ORF clone is ion-exchange column purified and shipped in a 2D barcoded Matrix tube containing 10ug of transfection-ready, dried plasmid DNA (reconstitute with 100 ul of water).

**Reconstitution Method:**

1. Centrifuge at 5,000xg for 5min.
2. Carefully open the tube and add 100ul of sterile water to dissolve the DNA.
3. Close the tube and incubate for 10 minutes at room temperature.
4. Briefly vortex the tube and then do a quick spin (less than 5000xg) to concentrate the liquid at the bottom.
5. Store the suspended plasmid at -20°C. The DNA is stable for at least one year from date of shipping when stored at -20°C.

**Note:** Plasmids are not sterile. For experiments where strict sterility is required, filtration with 0.22um filter is required.

**RefSeq:** [NM\\_007367.4](#)

**RefSeq Size:** 1541 bp

**RefSeq ORF:** 873 bp

**Locus ID:** 22913

**UniProt ID:** [Q9UKM9](#)

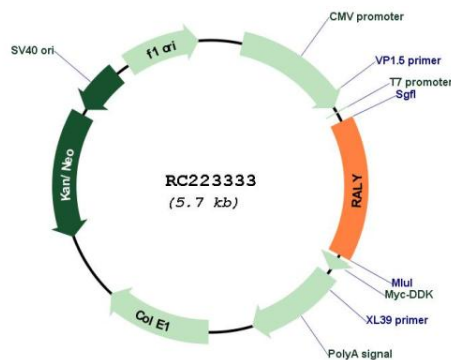
**Cytogenetics:** 20q11.22

**Domains:** RRM

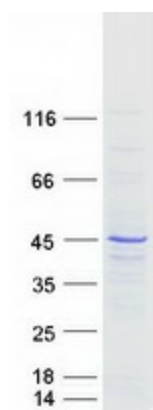
**MW:** 30.2 kDa

**Gene Summary:** This gene encodes a member of the heterogeneous nuclear ribonucleoprotein (hnRNP) gene family. This protein may play a role in pre-mRNA splicing and in embryonic development. Alternate splicing results in multiple transcript variants. [provided by RefSeq, Sep 2011]

### Product images:



Circular map for RC223333



Coomassie blue staining of purified RALY protein (Cat# [TP323333]). The protein was produced from HEK293T cells transfected with RALY cDNA clone (Cat# RC223333) using MegaTran 2.0 (Cat# [TT210002]).