

Product datasheet for **RC223331**

ASTL (NM_001002036) Human Tagged ORF Clone

Product data:

Product Type:	Expression Plasmids
Product Name:	ASTL (NM_001002036) Human Tagged ORF Clone
Tag:	Myc-DDK
Symbol:	ASTL
Synonyms:	SAS1B
Mammalian Cell Selection:	Neomycin
Vector:	pCMV6-Entry (PS100001)
E. coli Selection:	Kanamycin (25 ug/mL)



[View online »](#)

ORF Nucleotide Sequence:

>RC223331 representing NM_001002036
 Red=Cloning site Blue=ORF Green=Tags(s)

TTTTGTAATACGACTCACTATAGGGCGGCCGGAATTCGTCGACTGGATCCGGTACCGAGGAGATCTGCC
 GCC**CGGATCGCC**

ATGGAGGGTGTAGGGGGTCTCTGGCCTTGGGTGCTGGGTCTGCTCTCCTTGCCAGGTGTGATCCTAGGAG
 CGCCCCTGGCCTCCAGCTGCGCAGGAGCCTGTGGTACCAGCTTCCAGATGGCCTCACCCCTGAGGGAAC
 CCAGGCCCTCCGGGGACAAGGACATTCCTGCAATTAACCAAGGGCTCATCCTGGAAGAAACCCAGAGAGC
 AGCTTCTCATCGAGGGGACATCATCCGGCCGAGTCCCTTCCGACTGCTGTGAGCAACCAAGCAAAAT
 GGCCCATGGGTGGTAGTGGTGTGCTGGAGGTCCCTTCTGCTCTCCAGCAAGTACGATGAGCCAGCCG
 CCAGGTATCCTGGAGGCTTTGCGGAGTTTGAACGTTCCACGTGCATCAGGTTTGTACCTATCAGGAC
 CAGAGAGACTTCAATTCATCATCCCCATGTATGGGTGCTTCTCGAGTGTGGGGCGCAGTGGAGGGATGC
 AGGTGGTCTCCCTGGCGCCACGTGTCTCCAGAAGGGCCGGGCATTGTCCTTCATGAGCTCATGCATGT
 GCTGGGCTTCTGGCAGCAGCACACGCGGGCCGACCGGGACCGCTATATCCGTGTCAACTGGAACGAGATC
 CTGCCAGGCTTTGAAATCAACTCATCAAGTCTCGGAGCAGCAACATGCTGACGCCCTATGACTACTCCT
 CTGTGATGCACTATGGGAGGCTTGCCTTCAAGCCGGCTGGGCTGCCACCATCACACCCTTTGGGCCCC
 CAGTGTCCACATCGGCCAGCGATGGAACCTGAGTGCCTCGGACATCACCCGGTCTCAAACCTACGGC
 TGCAGCCCAAGTGGCCCCAGGCCCGTGGGAGAGGGTCCCATGCCACAGCACTGGTAGGAGCCCGCTC
 CGGCCTCCCTATCTCTGCAGCGGCTTTTGGAGGCACTGTGGCGGAATCCAGGAGCCCGACCCAGTGG
 TTCCAGTGCGGGAGGCCAGCCGTTCTGCAGGGCCTGGGAGAGCCACATGGGTGGGAGTCCCCTGCC
 CTGAAAAAGCTCAGTGCAGAGCCCTCGCAAGGCAGCCTCAGACCCTGGCTTCTCCCAAGATCAAGGC
 CTGGAGCAGGTGCCCGGTTGCTCAGGAGCAGTCTGGCTGGCCGGAGTGTCCACCAAGCCACAGT
 CCCATCTTCAGAAGCAGGAATCCAGCCAGTCCCTGTCCAGGGAAGCCAGCTCTGCCAGGGGGCTGTGTA
 CCTAGAAATCATTCAAGGGGATGTCCGAAGAT

ACGCGTACGCGGCCGCTCGAGCAGAACTCATCTCAGAAGAGGATCTGGCAGCAATGATATCCTGGATT
 ACAAGGATGACGACGATAAGGTTTAA

Protein Sequence:

>RC223331 representing NM_001002036
 Red=Cloning site Green=Tags(s)

MEGVGGLWPVWLGLLSPGVILGAPLASSCAGACGTSFPDGLTPEGTQASGDKDIPAINQGLILEETPES
 SFLIEGDIIRPSPFRLLSATSNKWPMGGSGVVEVPFLLSSKYDEPSRQVILEALAEFERSTCIRFVTYQD
 QRDFISIIIPMYGCFSSVGRSGGMQVVS LAPTCLQKGRGIVLHELMHVLGFWHEHTRADRDRYIRVNWNEI
 LPGFEINFIKSRSSNMLTPYDYSSVMHYGRLAFSRRGLPTITPLWAPSVHIGQRWNLASDITRVLKLYG
 CSPSPGPRPRGRGSHAHSTGRSPAPASLSLQRLLEALSAESRSPDPSGSSAGGQVPVAPGPESPHGWESPA
 LKKLSAEASARQPQTLASSPRSRPGAGAPGVAQEQSWLAGVSTKPTVPSSEAGIQPVVQSPALPGGCY
 PRNHFKGMSED

TRTRPLEQKLISEEDLAANDILDYKDDDDKV

Chromatograms:

https://cdn.origene.com/chromatograms/mk6602_b03.zip

Restriction Sites:

Sgfl-Mlul

Cloning Scheme:


ACCN: NM_001002036

ORF Size: 1293 bp

OTI Disclaimer: The molecular sequence of this clone aligns with the gene accession number as a point of reference only. However, individual transcript sequences of the same gene can differ through naturally occurring variations (e.g. polymorphisms), each with its own valid existence. This clone is substantially in agreement with the reference, but a complete review of all prevailing variants is recommended prior to use. [More info](#)

OTI Annotation: This clone was engineered to express the complete ORF with an expression tag. Expression varies depending on the nature of the gene.

Components: The ORF clone is ion-exchange column purified and shipped in a 2D barcoded Matrix tube containing 10ug of transfection-ready, dried plasmid DNA (reconstitute with 100 ul of water).

Reconstitution Method:

1. Centrifuge at 5,000xg for 5min.
2. Carefully open the tube and add 100ul of sterile water to dissolve the DNA.
3. Close the tube and incubate for 10 minutes at room temperature.
4. Briefly vortex the tube and then do a quick spin (less than 5000xg) to concentrate the liquid at the bottom.
5. Store the suspended plasmid at -20°C. The DNA is stable for at least one year from date of shipping when stored at -20°C.

RefSeq: [NM_001002036.3](#)

RefSeq Size: 1296 bp

RefSeq ORF: 1296 bp

Locus ID: 431705

UniProt ID: [Q6HA08](#)

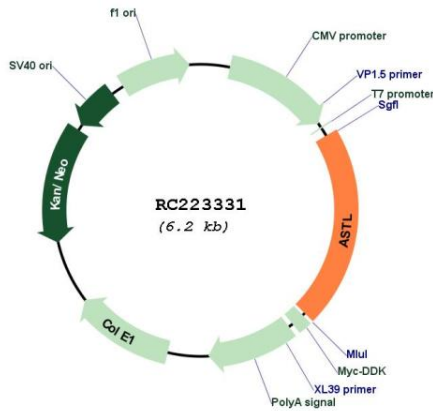
Cytogenetics: 2q11.2

Protein Families: Transmembrane

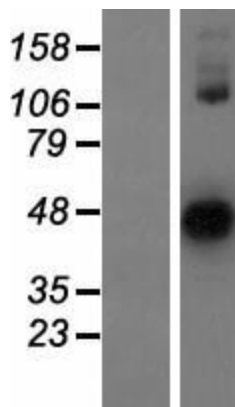
MW: 45.8 kDa

Gene Summary: Oocyte-specific oolemmal receptor involved in sperm and egg adhesion and fertilization. Plays a role in the polyspermy inhibition. Probably acts as a protease for the post-fertilization cleavage of ZP2. Cleaves the sperm-binding ZP2 at the surface of the zona pellucida after fertilization and cortical granule exocytosis, rendering the zona pellucida unable to support further sperm binding (By similarity).[UniProtKB/Swiss-Prot Function]

Product images:



Circular map for RC223331



Western blot validation of overexpression lysate (Cat# [LY424175]) using anti-DDK antibody (Cat# [TA50011-100]). Left: Cell lysates from untransfected HEK293T cells; Right: Cell lysates from HEK293T cells transfected with RC223331 using transfection reagent MegaTran 2.0 (Cat# [TT210002]).