

Product datasheet for **RC223329**

NABC1 (BCAS1) (NM_003657) Human Tagged ORF Clone

Product data:

Product Type:	Expression Plasmids
Product Name:	NABC1 (BCAS1) (NM_003657) Human Tagged ORF Clone
Tag:	Myc-DDK
Symbol:	NABC1
Synonyms:	AIBC1; NABC1; PMES-2
Mammalian Cell Selection:	Neomycin
Vector:	pCMV6-Entry (PS100001)
E. coli Selection:	Kanamycin (25 ug/mL)



[View online »](#)

ORF Nucleotide Sequence:

>RC223329 ORF sequence
 Red=Cloning site Blue=ORF Green=Tags(s)

TTTTGTAATACGACTCACTATAGGGCGGCCGGGAATTCGTCGACTGGATCCGGTACCGAGGAGATCTGCC
 GCC**CGGATCGCC**

ATGGGTAACCAAATGAGTGTCCCAAAGAGTTGAAGACCAAGAGAATGAACCAGAAGCAGAGACTTACC
 AGGACAACCGCTGCTCTGAACGGGTTCCAGTGGTGGTGTGACCCACACAGTTCAGCACTTAGAGGA
 AGTCGACTTGGGAATAAGTGTCAAGACGGATAATGTGGCACTTCTTCCCCGAGACAACGGAGATAAGT
 GCTGTTGCGGATGCCAACGGAAGAATCTTGGAAAGAGGCCAAACCCGAGGCACCACTGCTAAATCTC
 GTTTTTCTTGATGCTCTCTCGGCTGTACCAGGACGTACCGGAGACCAAGCCGAGATTCATCCCTTG
 ATCAGTGAAGCTTGTGTCAGCTCCAATAAAGCTCCAGCGAACAAAGACCAAGTGAAGCTGGACACTT
 CCGGTGGCAGCTGGACCGGGCAGGACACAGATAAAACCCAGGGCAGCCCCGGCCCAAGACAAGGTCC
 TCTCTGCCCGCAGGATCCCACGCTTCTCCACCTGAGACAGGGGAGCAGGAGGAGAAGCTCCCTCAA
 GCCAAGGACTCCAGCTTTTTGACAAATCTTCAAGCTGGACAAGGGACAGGAAAAGGTGCCAGGTGAC
 AGCCAACAGGAAGCCAAGAGGGCAGAGCATCAAGACAAGGTGGATGAGGTTCTGGCTTATCAGGGCAGT
 CCGATGATGTCCCTGCAGGGAAGGACATAGTTGACGGCAAGGAAAAAGAGGACAAGAAGTGGAACTGC
 GGATTGCTGTGCTCCCTGGGACCCAGAAGGACTGGAGACTGCAAAGGACGATTCCAGGCAGCAGCTATA
 GCAGAGAATAATAATTCTATCATGAGTTTCTTTAAACTCTGGTTTACCTAACAAAGCTGAAACAAAA
 AGGACCCAGAAGACACGGGTGCTGAAAAGTCAACCACCACTTCAGCTGACCTTAAGTCAGACAAAGCCAA
 CTTTACATCCCAGGAGACCCAAGGGCTGGCAAGAATCCAAAGGATGCAACCCATCGGGGCACACACAG
 TCCGTGACAACCCCTGAACCTGCGAAGGAAGGCACCAAGGAGAAATCAGGACCCACCTCTCTGCCTGG
 GCAAAGTGTTTTTGGAAAAAGTCAAGTAAAGAGGACTCAGTCCCCACAGGTGCGGAGGAGAATGTGGTGTG
 TGAGTCACCAAGTAGAGATTATAAAGTCCAAGGAAGTAGAATCAGCCTTACAAACAGTGGACCTCAACGAA
 GGAGATGCTGCACCTGAACCCACAGAAGCGAAACTCAAAAAGAGAAGAAAGCAAACCAAGAAGCTCTCTGA
 TGGCGTTTCTCAGACAAATGTCAGTGAAGGGGATGGAGGGATCACCCACTCAGAAGAAATAATGGGAA
 AGACTCCAGTGCACCAACATCAGACTCCACAGAAAAGACTATCACACCGCCAGAGCCTGAACCAACAGGA
 GCACCACAGAAGGTAAAGAGGGCTCCTCGAAGGACAAGAAGTCAGCAGCCGAGATGAACAAGCAGAAGA
 GCAACAAGCAGGAAGCCAAAGAACCAGCCAGTGCACAGAGCAGGCCACGGTGGACAGCAACTACTGCA
 GAATGGGACAAGCTCCAAAAGAGACTGAGAAGCGGCAGCAGTCCCTTGGGGCTTCTTTAAAGGCTG
 GGACCAAAGCGGATGTTGGATGCTCAAGTGCAAACAGACCCAGTATCCATCGGACCAGTTGGCAAATCCA
 AG

AG**CGGACCG**ACGCGTACGCGGCCGCTCGAGCAGAAACTCATCTCAGAAGAGGATCTGGCAGCAAATGATATCC
 TGGATTACAAGGATGACGACGATAAGGTTTAA

Protein Sequence:

>RC223329 protein sequence
 Red=Cloning site Green=Tags(s)

MGNQMSVPQRVEDQENEPEAETYQDNASALNGVPVVVSTHTVQHLEEVLDLGISVKTDNVATSSPETTEIS
 AVADANGKNLGKEAKPEAPAASRFFLMLSRPVPGRGDAQADSSLGSKLDVSSNKAPANKDPSESWT
 PVAAGPGQDTPGHAPAQDKVLSAARDPTLLPPETGGAGGEAPSKPKDSSFFDKFFKLDKGQEKVPGD
 SQQEAKRAEHQDKVDEVPGLSGQSDVDPAGKDIVDGEKEGQELGTADCSVPGDPEGLETAKDSSQAAAI
 AENNNSIMSFFKTLVSPNKAETKKDPEDTGAESPTTSADLKSDFKANSQETQAGKNSKGCNPSGHTQ
 SVTTPEPAKEGTEKESGPTSLPLGKLFWKSVKEDSVPTGAEENVVCEPVEI IKSKEVESALQTVDLNE
 GDAAPEPTEAKLKREESKPRTSMAFLRQMSVKGDGGITHEEINGKDSSCQTSDESTKITTPPEPEPTG
 APQKGEKSSKDKKSAEMNKQKSNKQEAKEPAQCTEQATVDTNSLQNGDKLQKRPEKRQSLGGFFKGL
 GPKRMLDAQVQTDVPSIGPVGKSK

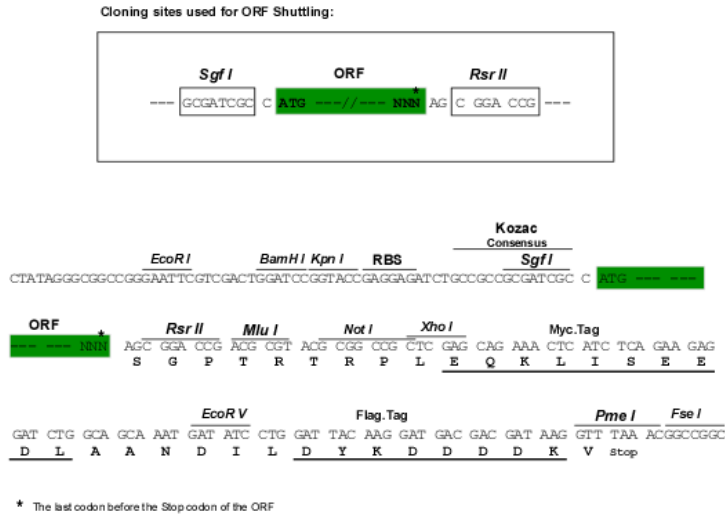
SGP**TRTRPLEQKLI**SEEDLAANDILDYKDDDDKV

Chromatograms:

https://cdn.origene.com/chromatograms/mk6617_e11.zip

Restriction Sites: SgfI-RsrII

Cloning Scheme:



ACCN: NM_003657

ORF Size: 1752 bp

OTI Disclaimer: Due to the inherent nature of this plasmid, standard methods to replicate additional amounts of DNA in E. coli are highly likely to result in mutations and/or rearrangements. Therefore, OriGene does not guarantee the capability to replicate this plasmid DNA. Additional amounts of DNA can be purchased from OriGene with batch-specific, full-sequence verification at a reduced cost. Please contact our customer care team at custsupport@origene.com or by calling 301.340.3188 option 3 for pricing and delivery.

The molecular sequence of this clone aligns with the gene accession number as a point of reference only. However, individual transcript sequences of the same gene can differ through naturally occurring variations (e.g. polymorphisms), each with its own valid existence. This clone is substantially in agreement with the reference, but a complete review of all prevailing variants is recommended prior to use. [More info](#)

OTI Annotation: This clone was engineered to express the complete ORF with an expression tag. Expression varies depending on the nature of the gene.

Components: The ORF clone is ion-exchange column purified and shipped in a 2D barcoded Matrix tube containing 10ug of transfection-ready, dried plasmid DNA (reconstitute with 100 ul of water).

Reconstitution Method:

1. Centrifuge at 5,000xg for 5min.
2. Carefully open the tube and add 100ul of sterile water to dissolve the DNA.
3. Close the tube and incubate for 10 minutes at room temperature.
4. Briefly vortex the tube and then do a quick spin (less than 5000xg) to concentrate the liquid at the bottom.
5. Store the suspended plasmid at -20°C. The DNA is stable for at least one year from date of shipping when stored at -20°C.

RefSeq: [NM_003657.3](#)

RefSeq Size: 3475 bp

RefSeq ORF: 1755 bp

Locus ID: 8537

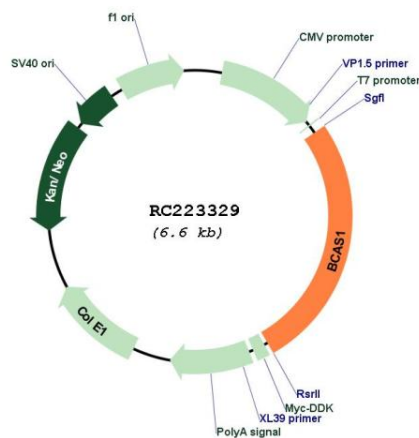
UniProt ID: [O75363](#)

Cytogenetics: 20q13.2

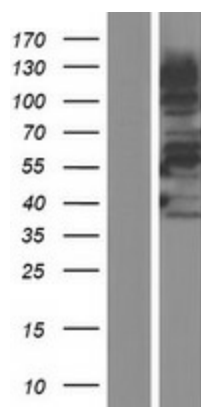
MW: 61.7 kDa

Gene Summary: This gene resides in a region at 20q13 which is amplified in a variety of tumor types and associated with more aggressive tumor phenotypes. Among the genes identified from this region, it was found to be highly expressed in three amplified breast cancer cell lines and in one breast tumor without amplification at 20q13.2. However, this gene is not in the common region of maximal amplification and its expression was not detected in the breast cancer cell line MCF7, in which this region is highly amplified. Although not consistently expressed, this gene is a candidate oncogene. [provided by RefSeq, Apr 2016]

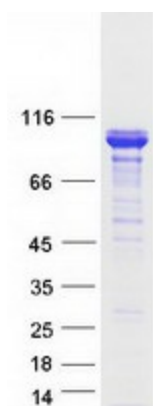
Product images:



Circular map for RC223329



Western blot validation of overexpression lysate (Cat# [LY418518]) using anti-DDK antibody (Cat# [TA50011-100]). Left: Cell lysates from untransfected HEK293T cells; Right: Cell lysates from HEK293T cells transfected with RC223329 using transfection reagent MegaTran 2.0 (Cat# [TT210002]).



Coomassie blue staining of purified BCAS1 protein (Cat# [TP323329]). The protein was produced from HEK293T cells transfected with BCAS1 cDNA clone (Cat# RC223329) using MegaTran 2.0 (Cat# [TT210002]).