

## Product datasheet for RC223328

### KIF13A (NM\_022113) Human Tagged ORF Clone

#### Product data:

Product Type:	Expression Plasmids
Product Name:	KIF13A (NM_022113) Human Tagged ORF Clone
Tag:	Myc-DDK
Symbol:	KIF13A
Synonyms:	bA500C11.2; RBKIN
Mammalian Cell Selection:	Neomycin
Vector:	pCMV6-Entry (PS100001)
E. coli Selection:	Kanamycin (25 ug/mL)
ORF Nucleotide Sequence:	>RC223328 representing NM_022113 Red=Cloning site Blue=ORF Green=Tags(s)

TTTTGTAATACGACTCACTATAGGGCGGCCGGAATTCGTCGACTGGATCCGGTACCGAGGAGATCTGCC  
GCC**CGATCGCC**

ATGTCGGATACCAAGGTAAAAGTTGCCGTCGGGTCGGGCCATGAACCGACGAGAACTGGAAGTGAACA  
CCAAGTGCCTGGTGGAGATGGAAGGGAATCAAACGGTCTGCACCCTCCTCCTTCAACACCAAACAGGG  
AGAAAGGAAACCTCCCAAGGTATTTGCCTTTGATTATTGCTTTTGGTCCATGGATGAATCTAACACTACA  
AAATACGCTGGTCAAGAAGTGGTTTTCAAGTGCCTTGGGGAAGGAATCTTGAAAAAGCCTTTCAGGGGT  
ATAATGCGTGTATTTTTGCATATGGACAGACAGGTTCCGGAAAAATCCTTTCCATGATGGCCATGCTGA  
GCAGCTGGGCCTTATTCCAAGGCTCTGCTGTGCTTTATTTAAAAGGATCTCTTTGGAGCAAATGAGTCA  
CAGACCTTTAAAGTTGAAGTGTCTATATGAAAATTTATAATGAGAAAAGTTCGGGATCTTTTAGACCCCA  
AAGGGAGTAGACAGTCTCTTAAAGTTCGAGAACATAAAGTTTTGGGACCATATGTAGATGGTTTATCTCA  
ACTAGCTGTCACTAGTTTTGAGGATATTGAGTCATTGATGTCTGAGGGAAATAAGTCTCGAACGGTAGCT  
GCTACCAACATGAACGAAGAAAGCAGCCGCTCCCATGCTGTGTTCAACATCATAATCACACAGACTTT  
ATGACCTGCAGTCTGGGAATCCGGGGAGAAAAGTCAGTAAGGTCAGCTTGGTAGACCTGGCGGGTAGCGA  
AAGAGTATCTAAAACAGGAGCTGCAGGAGAGCGACTGAAAGAAGGCAGCAACATTAACAAATCGCTTACA  
ACCTTGGGGTTGGTTATATCATCACTGGCTGACCAGGCAGCTGGCAAGGGTAAAAGCAAATTTGTGCCTT  
ATCGAGATTCAGTCTCACTTGGCTGCTTAAGGACAACCTTGGGGGCAACAGCCAAACCTCTATGATAGC  
CACAATCAGCCAGCCGAGACAACATGAAGAGACCCTCCACATTAAGATATGCAGACCCGAGCCAAA  
AGGATTGTGAACCATGCTGTTGTGAATGAGGACCCCAACGAAAAGTGATCCGAGAACTGCGGGAGGAAG  
TCGAGAAACTGAGAGAGCAGCTCTCAGGCAGAGGCCATGAAGGCCCTGAACTGAAGGAGAAGCTCGA  
AGAGTCTGAAAAGCTGATAAAAAGAACTAACAGTGACTTGGGAAGAGAAGCTGAGAAAAACAGAAGAGATA  
GCACAGGAAAGACAACGACAACCTGAAAGCATGGGGATTTCCCTGGAGATGTCCGGTATCAAGGTGGGG  
ATGACAAATGCTACTTAGTCAATCTGAATGCAGACCCTGCTTTAACGAACCTCTGGTTTATTATTTAAA  
GGATCACACCAGGGTGGGTGCAGATACCTCAAGATATCCAGCTTTTTGGCATAGGAATTCAGCCTCAG



[View online »](#)

CACTGTGAGATTGACATTGCATCTGATGGAGACGTCACTCTCACTCCAAAAGAAAATGCAAGGTCCTGTG  
TGAACGGCACCCCTTGTGTGCAGTACCACCCAGCTGTGGCATGGTGACCGAATCCTATGGGAAAATAATCA  
CTTTTTAGAATAAACTTACCTAAGAGGAAACGTCGAGATTGGTTGAAAGACTTTGAAAAAGAACGGGC  
CCGCCAGAGCATGACCTGGATGCAGCCAGTGAGGCTTCTCTGAACCAGACTATAACTATGAATTTGCAC  
AGATGGAAGTTATCATGAAAACCTGAATAGTAATGACCCAGTTCAAAATGTGGTTCAAGTCTGGAGAA  
ACAATACCTAGAAGAAAAGAGAAGTGCCCTAGAGGAGCAGCGGCTCATGTATGAGCGGAACTGGAGCAA  
CTCCCGCAGCAGCTCTCCCGCAGCGCAGCCACAGAGTACGCGCCCTGACCCGCTGGCCTACAGCAGCC  
AGACAGCGCAGCAGAAGGTGACCCAGTGGGCAGAGAGAGGGATGAACTCTCCGACAAGGCTGGCAAA  
ACTGCGAGAGCAGCTGGTTAAAGCTAATACCTTGGTGAGGGAAGCAAACCTCCTGGCTGAGGAAATGAGC  
AAACTCACCGATTACCAAGTGACTCTTCAGATCCCTGCTGCAAACCTCAGTGCCAATAGGAAGAGAGGTG  
CAATAGTGAGTGAACCAGCTATCCAAGTGAGGAGGAAAGGAAAGAGCACCCAAGTGTGGACCATTGAGAA  
GCTGGAGAATAAATTAATTGACATGAGAGACCTTACCAAGAATGGAAGGAAAAAGTTCTGAGGCAAAG  
AGACTCTACGAAAACGAGGTGACCCCTTCTATGAAGCTCAAGAAAATCACAACTCATCGGGTGGCGA  
ATGTATTCTTGAATGCCTTCTGTGATGTGAACTTCAGTATGCAGTCCCTATCATCAGCCAGCAGGG  
GGAGGTTGCAGGGCGTCTCCACGTGGAAGTGATGCGTGTACAGGAGCTGTTCCAGAGCGTGTGGTGGAG  
GATGACTCTTCGAGAAATTCAGTGAAAGTGGGAGCCTTGAAGTCGTAGACAGCAGCGGGGAAATCATT  
ACCGAGTCAAAAAGCTGACATGTCGGGTAAAAATTAAGAAGCAACGGGGCTGCCCTTAAACCTCTCAAA  
TTTTGTCTTGTCAATACACATTCTGGGACCAGTGTGAGTCTACGGTGGCTGCCCGGTGGTGGACCC  
GAGGTGCCTTACCACAGTCCAAGGATGCCAGTACACAGTGGCCTTCTCCCACTGTAAGGACTATGTGG  
TGAATGTAAACAGAAGAAATTTCTGGAGTTCATTTAGATGGAGCACTGGCCATTGAAGTATGGGGCCACCG  
GTGTGCTGGAATGGCAGCTCCATCTGGGAGTTCGATTCTTTCATGCTAAGACAAGAACACTGCATGAC  
AGGTGGAATGAAGTAAACGGAAGAATAGAAATGTGGATCCATATTAGAATTGAATGAGTAGGAGAGT  
ATGCTGCACTGGAATTCATCAGGCAAAAGATGTCAACACAGGAGGCATTTTCAACTTAGACAGGTCAT  
TTCCCGTAGAGTACAAGTACGGGTGAAACCTGTGCAGCATTACAGGACACTGCCACTTATGGTTGAAGCC  
ATCCTGTGAGTATCCATCGGCTGTGTAACCTGCCAGGTCCACCAAACCTCAAAGAGGGCTGGACAGTTACC  
AGAGAGATGATGAGGATGGTGTGATATGGATAGTTATCAGGAAGAAGACTTAAACTGCGTAAGGGAGAG  
GTGGTCAGATGCACTCATTAAACGACGAGAATACCTGGATGAACAGATAAAAAAGTACAGCAATAAAAA  
GAGAAAACAGAGGACGATGTGGAGCGGGAAGCCAGCTTGTGGAGCAGTGGTGGGCTGACTGAGGAAA  
GGAATGCTGTGCTGGTCCAGCCCCAGGCAGTGGGATTCCTGGGGCACCTGCCACTGGATCCCACCTCC  
TGGAAATGGAACCCACATACCAGTCTCTTCTCGATTTGAATGCGGATGACCCAGTCCAATGAGCAG  
CTTGTGGCCCCATGCATCCGGCGTGAATCCATCCTGCCAAGGAGCATGGCAGTCAATTTTTCTACC  
TGCCCATCATAAAGCACAGTGTGATGAGGTTTACGCCACAGCCTTGGGATTCCTCGGTGCATGATTC  
TGTTCACTTGAATAGGGTACACCAACAGAAATGAAAGGATTTACCTAATTGTGAAAACACAGTTCAACT  
AGCCACCTGCTGCTATGGAGTTAGTATTACGAAAACGAATTGCAGCCAATATTTACAACAAACAGAGTT  
TCACGCAGAGTTTGAAGAGGAGAATATCCCTGAAAAATATATTTTATTCTGTGGTGAACCTATGAAAT  
AGTATCCAATATACCAAAGGCAACTGAGGAGATAGAGGACCGGAAACGCTGGCTCTCCTGGCAGCAAGG  
AGTGAAAACGAAGGCACATCAGATGGGGAGACGTACATTGAGAAGTACACTCGAGGCGTGTGCAGGTGG  
AAAACATTTCTGAGTCTTGAACGGCTCCGGCAGGCCGTACAGTCAAAGAAGCACTTCCACCAAAGCCCG  
GCACATTCGGAGGAGCCTCAGTACACCAAATGTTCAATGTCTTCCAGCCGACCGGACCTTTCTGGC  
TTTGATGAAGATGACAAGGGTTGGCCAGAGAACCAGTTGGACATGTCTGACTATAGCTCCAGTTACCAAG  
ATGTAGCATGTTATGGAACCTTACCAGGATTCTCCTCGAAGGAATAAAGAAGTTGTACATCAGAGAC  
TCCTCATGCCTTAAACGTCAGCCCTTTTAAAGCATTCTCTCCTCAGCCACCAAAGTTTTTCAAGCCCTA  
ATGCCTGTAAAAGAGGAGCATAAGAAAAGGATAGCCCTGGAAGCAAGGCCTTTTCAAGCCAGGAGAGCA  
TGCCTCCACCTCAGGCACATAACCCTGGCTGCATTGTACCCTCAGGAAGCAATGGCAGCAGCATGCCAGT  
AGAACAATAACAAACGTGAGAAGAAGATTGACTCTGAGGAGGAAGAAAATGAGCTGGAAGCTATTAAC  
AGGAAGCTAATAAGTTCACAGCCTTATGTACCTGTGGAGTTTGTGACTTCAGTGTTCACATGCCAGCT  
TGGAGAACAGGGAATGGTTTTCTCTAAAGTAGATCTGTCAAACCTCACGGGTCTTGGAGAAGAAGTGT  
CCGTAGCCCTACCACAGCAGTATTACCAGTGGCTACTTTCCACAGTGCCTCCAATGCCACCCTGTCT  
GACATGGTGGTCCCTTCTAGTGACAGCTCAGACCAGCTGGCCATTGAGACGAAGGATGCAGACTCCACCG  
AGCACTCCACACCATCGCTTGTGCATGATTTACAGGCCCTCAAAACAAAGAGTTGACAGAAGTCGAAAA  
AGGCTTGGTAAAGGACAAGATAATTGTGGTGCCACTCAAGGAAAACAGTGCCTTAGCCAAAGGGAGCCCA  
TCATCCCAGAGCATCCCTGAGAAAAACTCCAAATCACTGTGCAGGACTGGCTCATGTTGAGAAGTATGATG

CCTGCCCCAGCAAAATTAGCCAGCCAGCCAGGGGATTCTGCCCCAGGGAGGTGACGGTAGAACACACCAC  
 CAACATCCTTGAAGACCATTCTTTCACAGAATTTATGGGAGTGTGAGAGGAAAAAGATTTTGATGGTTTG  
 ACAGATTCTTCTGCTGGAGAGCTTCCAGTAGGAGGAGTCTACCAATAAAAACAGGCGGCAAGACTGTCT  
 CCGATGGGCTCCACCACCCAGCCAGCTGCATTCCAAGTTAGAGAATGACCAGGTAATAATTCCAGAGGC  
 AGCCTTTTGGGTCTGTGCTGTCAA

ACGCGTACGCGGCGCTCGAGCAGAACTCATCTCAGAAGAGGATCTGGCAGCAATGATATCCTGGATT  
 ACAAGGATGACGACGATAAGGTTTAA

**Protein Sequence:**

>RC223328 representing NM\_022113  
 Red=Cloning site Green=Tags(s)

MSDTKVKVAVRVRPMNRRELELNTKCVVEMEGNQTVLHPPPSNTKQGERKPPKVFADYCFWMSDESNTT  
 KYAQGEVVFVKCLGEGILEKAFQGYNACIFAYGQTGSGKSF SMMGHAEQLGLIPRLCCALFKRISLEQNES  
 QTFKVEVSYMEIYNEKVRDLDLDPKGSRQSLKVRHVKVLPYVDGLSQLAVTSFEDIESLMSEGNKSRTVA  
 ATNMNEESSRSHAVFNIIITQTLYDLQSGNSGEKVSQVSLVDLAGSERVSKTGAAGERLKEGNSINKSLT  
 TLGLVISSLADQAAGKGSKFVQYRDSVLTWLLKDNLGGNSQTSMIATISPAADNYEETLSTLRYADRAK  
 RIVNHAVVNEDPNAKVIRELREEVEKLEQLSQAEAMKAPELKEKLEESEKLIKELTVTWEKLRKTEEI  
 AQERQRQLESMGISLEMSGIKVGDCKCYLVNLNADPALNELLVYVYLDHTRVGDADTSQDIQLFGIGIQPQ  
 HCEIDIASDGDVTLTPKENARSCVNGTLVCSTTQLWHGDRILWGNHFFRINLPKRKRDRDLKDFEKETG  
 PPEHDLDAASEASEPDYNYEFAQMEVIMKTLNSNDPVQNVVQVLEKQYLEEKRSAL EEQRLMYERELEQ  
 LRQQLSPDRQPQSSGPDRLAYSSQTAQQKVTQWAEERDELFRQGLAKLREQLVKANTLVREANFLAEEMS  
 KLTDYQVTLQIPAANLSANRKRGAIVSEPAIQVRRKGGKSTQVWTIEKLENKLIDMRDLYQEWEKVEPEAK  
 RLYGKRDPFYEAQENHNLIGVANVFLECLFCDVKLQYAVPIISQQGEVAGRLHVEVMRVTGAVPERVVE  
 DDSSENSESGSLEVVDSGGEIHRVKLTCRVKIKEATGLPLNLSNFVFCQYTFWDQCESTVAAPVVDP  
 EVPSPQSKDAQYTVAFSHCKDYVVNTEEFLEFISD GALAIEVWGHRCAGNGSSIWEVDSLHAKTRTLHD  
 RWNEVTRRIEMWISILELNELGEYAAVELHQAKDVNTGGIFQLRQGHSSRRVQVTVKPVQHSGLPLMVEA  
 ILSVSIQCVTARSTKLQRLDSYQRDDEGDMDSYQEEDLNCVRRERWSDALIKRREYLDEQIKKVSNTK  
 EKTEDDVEREAQLVEQWVGLTEERNAVLVPAPGSGIPGAPADWIPPPGMETHIPVFLDLNADDPANEQ  
 LVGPHASGVNSILPKEHGSQFFYLPIIKHSDEVSATASWDSSVHDSVHLNRVTPQNERIYLIVKTTVQL  
 SHPAAMELVLRKRIAANIYNKQSFQSLKRRISLKNIFYSCGVTYEIVSNIPKATEEIEDRETLALLAAR  
 SENEKSDGETYIEKYTRGVLQVENILSLERLRQAVTVKEALSTKARHIRRSLSTPNVHNVSSSRPDLSG  
 FDEDDKGWPENQLDMSDYSSSYQDVACYGTLPRDSPRRNKEGCTSETPHALTVSPFKAFSPQPPKFFKPL  
 MPVKEEHKRIAL EARPLL SQESMPPPQAHNPGCIVPSGNSGSSMPVEHNNKREKKIDSEEEENELEAIN  
 RKLISSQPYVPVEFADFSVYNASLENREWFSSKVDLSNSRVLEKEVSRPPTSSITSGYFSHSASNATLS  
 DMVVPSSDSSQLAIQTKDADSTEHSPLVHDFRPPSSNKELTEVEKGLVKDKIIVVPLKENSALAKGSP  
 SSQSIPEKNSKSLCRTGSCSELDACPSKISQPARGFCPREVTVEHTTNILEDHSFTEFMGVSEKDFDGL  
 TDSSAGELSSRRSLPNKTGGKTVSDGLHHPSQLHSHKLENDQVIPEAAFVWLCCQ

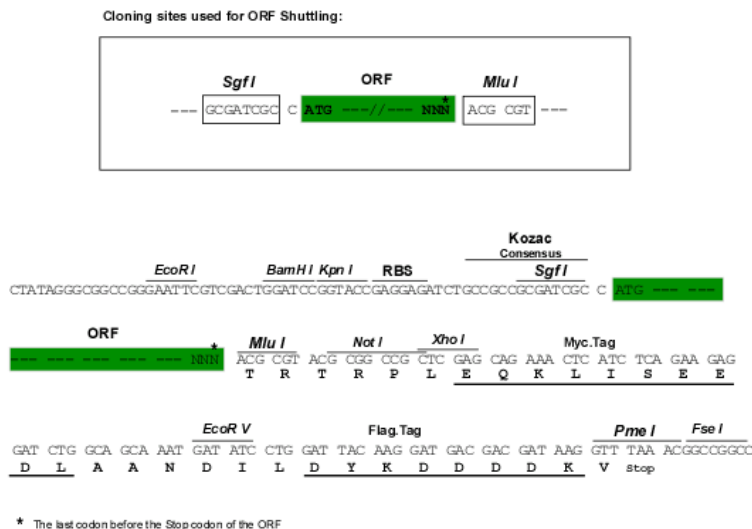
TRTRPLEQKLI SEEDLAANDILDYKDDDDKV

**Chromatograms:**

[https://cdn.origene.com/chromatograms/mk8045\\_g09.zip](https://cdn.origene.com/chromatograms/mk8045_g09.zip)

**Restriction Sites:**

SgfI-MluI

**Cloning Scheme:**

**ACCN:** NM\_022113

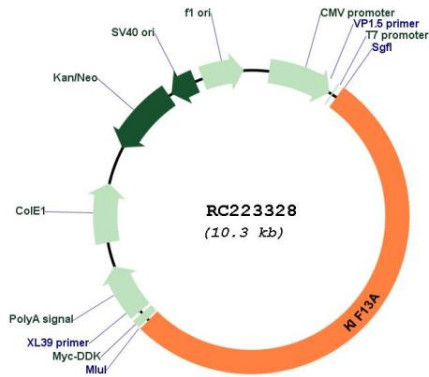
**ORF Size:** 5415 bp

**OTI Disclaimer:** The molecular sequence of this clone aligns with the gene accession number as a point of reference only. However, individual transcript sequences of the same gene can differ through naturally occurring variations (e.g. polymorphisms), each with its own valid existence. This clone is substantially in agreement with the reference, but a complete review of all prevailing variants is recommended prior to use. [More info](#)
**OTI Annotation:** This clone was engineered to express the complete ORF with an expression tag. Expression varies depending on the nature of the gene.

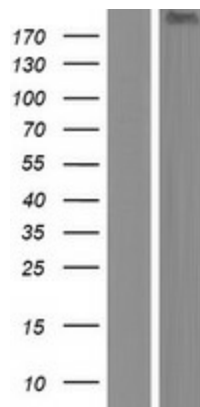
**Components:** The ORF clone is ion-exchange column purified and shipped in a 2D barcoded Matrix tube containing 10ug of transfection-ready, dried plasmid DNA (reconstitute with 100 ul of water).

<b>Reconstitution Method:</b>	<ol style="list-style-type: none"><li>1. Centrifuge at 5,000xg for 5min.</li><li>2. Carefully open the tube and add 100ul of sterile water to dissolve the DNA.</li><li>3. Close the tube and incubate for 10 minutes at room temperature.</li><li>4. Briefly vortex the tube and then do a quick spin (less than 5000xg) to concentrate the liquid at the bottom.</li><li>5. Store the suspended plasmid at -20°C. The DNA is stable for at least one year from date of shipping when stored at -20°C.</li></ol>
<b>RefSeq:</b>	<a href="#">NM_022113.3</a> , <a href="#">NP_071396.3</a>
<b>RefSeq Size:</b>	5878 bp
<b>RefSeq ORF:</b>	5418 bp
<b>Locus ID:</b>	63971
<b>UniProt ID:</b>	<a href="#">Q9H1H9</a>
<b>Cytogenetics:</b>	6p22.3
<b>Domains:</b>	kinesin
<b>Protein Families:</b>	Druggable Genome
<b>MW:</b>	202.1 kDa
<b>Gene Summary:</b>	<p>This gene encodes a member of the kinesin family of microtubule-based motor proteins that function in the positioning of endosomes. This family member can direct mannose-6-phosphate receptor-containing vesicles from the trans-Golgi network to the plasma membrane, and it is necessary for the steady-state distribution of late endosomes/lysosomes. It is also required for the translocation of FYVE-CENT and TTC19 from the centrosome to the midbody during cytokinesis, and it plays a role in melanosome maturation. Alternative splicing of this gene results in multiple transcript variants. [provided by RefSeq, Aug 2011]</p>

Product images:



Circular map for RC223328



Western blot validation of overexpression lysate (Cat# [LY411785]) using anti-DDK antibody (Cat# [TA50011-100]). Left: Cell lysates from untransfected HEK293T cells; Right: Cell lysates from HEK293T cells transfected with RC223328 using transfection reagent MegaTran 2.0 (Cat# [TT210002]).