

Product datasheet for **RC223322**

COL8A1 (NM_001850) Human Tagged ORF Clone

Product data:

Product Type:	Expression Plasmids
Product Name:	COL8A1 (NM_001850) Human Tagged ORF Clone
Tag:	Myc-DDK
Symbol:	COL8A1
Synonyms:	C3orf7
Mammalian Cell Selection:	Neomycin
Vector:	pCMV6-Entry (PS100001)
E. coli Selection:	Kanamycin (25 ug/mL)



[View online »](#)

ORF Nucleotide
Sequence:

>RC223322 representing NM_001850
Red=Cloning site Blue=ORF Green=Tags(s)

TTTTGTAATACGACTCACTATAGGGCGGCCGGAATTCGTCGACTGGATCCGGTACCGAGGAGATCTGCC
GCCGCGATCGCC

ATGGCTGTGCTGCCTGGCCCTCTGCAGCTGCTGGGAGTGTGCTTACCATTTCCTGAGTTCATCAGGC
TCATTCAGGCTGGTGCCTACTATGGGATCAAGCCGCTGCCACCTCAAATTCCTCCTCAGATGCCACCACA
AATTCACAATACCAGCCCTGGGTGAGCAAGTACCTCATGCTTTGGCCAAAGATGGCCTTGCCATG
GGCAAGGAGATGCCCACTTGCAGTATGGCAAAGAGTATCCACACCTACCCCAATATATGAAGGAAATTC
AACCGGCGCCAAGAATGGGCAAGGAAGCGTACCCAAGAAAGGCAAGAAATACCATTAGCCAGTTTACG
AGGGGAACAAGGTCCCGTGGAGAGCCTGGCCAAAGAGGACCCTGGGCCCCCTGGTTTGCAGGTCAT
GGGATACCTGGAATTAAGGAAAACCAGGGCCACAGGGATATCCAGGAGTTGGAAAGCCAGGTATGCCTG
GAATGCCAGGGAAGCCAGGAGCCATGGGCATGCCTGGGGCAAAGGAGAAATGGACAGAAAGGGGAAAT
TGGGCCTATGGGGATCCCAGGACCACAAGGACCTCCAGGGCCTCATGGACTTCTGGCATTGGGAAGCCA
GGTGGGCCAGGGTTACCAGGGCAACCAGGACCAAGGGTATCGAGGACCCAAAGGACTACCAGGACCTC
AAGGCCTTCGGGGTCTAAAGGAGACAAGGGCTTCGGGATGCCAGGTGCCAGGTGCCAGGTGTAAGGGGCCTC
AGGGATGCACGGCCCTCCCGCCCTGTTGGACTGCCAGGAGTGGGCAAACCAGGAGTGACAGGCTTCCCT
GGGCCCCAGGGCCCCCTGGGAAAGCCAGGGGCTCCAGGAGAACCTGGGCCACAAGGCCCTATTGGGGTAC
CGGGGGTTCAAGGACCTCCTGGGATACCCGGAATTGAAAGCCAGGCCAGGATGGGATCCCAGGCCAGCC
AGGATTTCCAGGTGGCAAAGGGGAGCAAGGACTGCCAGGGCTACCAGGACCCCAAGGCTTCCAGGGATT
GGGAAACCAGGCTTCCAGGACCCAAAGGTGACCGGGGCATGGGAGGTGTTCTGGGGCTCTTGACCAA
GAGGGGAGAAAGGACCAATAGGTGCCCAAGGATAGGGGGTCTCCAGGAGAGCCAGGCTGCCTGGAAT
CCAGGTCTATGGGCCCTCCAGGTGCTATTGGTTTTCTGGACCCAAAGGAGAAAGGTGGGATTGTAGGG
CCACAGGGGCCACCAGGTCCCAAGGGTGAAGCAGGGCTTCAAGGCTTCCAGGAAAGCCAGGTTTCTTG
GTGAAGTAGGGCTCCTGGCATGAGGGGTTTGCCAGGTCCATAGGGCCCAAGGGGGAAGCTGGGCAAAA
AGGTGTACCAGGACTCCCTGGTGTCCAGGGCTTCTCGGACCTAAGGGAGAGCCAGGAATCCCAGGGGAT
CAGGGTTTACAGGGCCCCCAGGTATCCCAGGGATTGGGGCCCTAGTGGCCCCATTGGACCACCTGGGA
TTCCAGGCCCAAAGGGAGCCGGGCTCCAGGGCCCCCTGGTTCCCTGGTATAGGGAAACCCGGAGT
GGCAGGACTTCATGGCCCCCAGGGAAGCCTGGTGCCTTGGTCTCAAGGCCAGCCTGGCCTTCCAGGA
CCCCCAGGCCCTCCAGGACCTCCAGGACCCCAAGTGTGATGCCCTACACCACCACCCAGGGAGAGT
ATCTGCCAGATATGGGGCTGGGAATTGATGGCGTGAAACCCCCCATGCCTACGGGGCTAAGAAAGGCAA
GAATGGAGGGCCAGCCTATGAGATGCCTGCATTTACCGCCGAGCTAACCGCACCTTTCCACCGGTGGGG
GCCCCAGTGAAGTTTAAACAACTGCTGTATAACGGCAGACAGAATAACAACCCGACAGCAGGCATTTCA
CCTGTGAGGCCCTGGTGTCTACTACTTTGCATACCACGTTCACTGCAAGGGGGGCAACGTGTGGTTGC
TCTATTCAAGAACAACGAGCCCGTGTGTACACGTACGACGAGTACAAAAAGGGCTTCTGGACCAGGCA
TCTGGGAGTGCAGTGTGCTGCTCAGGCCCGGAGACCGGGTGTCTCCAGATGCCCTCAGAACAGGCTG
CAGGACTGTATGCCGGGCAGTATGTCCACTCCTCTTTTCAGGATATTTATTGTATCCCATG

ACGCGTACGCGGCCGCTCGAGCAGAACTCATCTCAGAAGAGGATCTGGCAGCAAATGATATCCTGGATT
ACAAGGATGACGACGATAAGGTTTAA

Protein Sequence: >RC223322 representing NM_001850
Red=Cloning site Green=Tags(s)

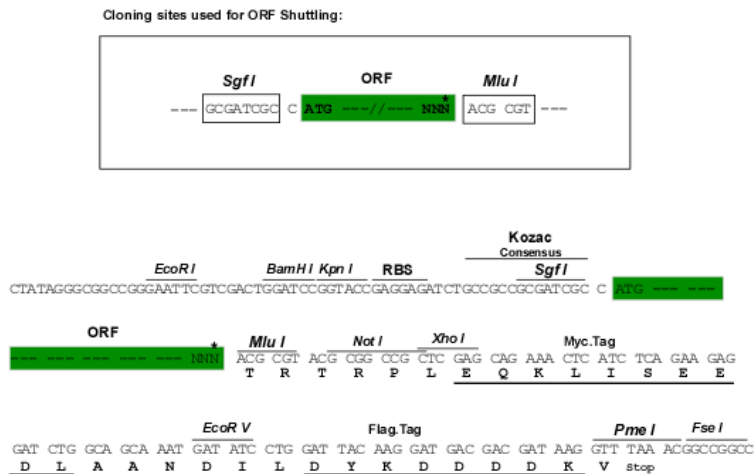
```
MAVLPGPLQLLGVLLTISLSSIRLIQAGAYYGIKPLPPQIPPQMPPIQYQPLGQQVPHMPLAKDGLAM
GKEMPHLQYGKEYPHLPQYMKELQAPRMRGKEAVPKKGEIPLASLRGEQGRGEPGRGPPGPPGLPGH
GIPGIKKGKPGPQYYPGVGKPGMPGMPGKPGAMGMPGAKGEIGQKGEIGPMGIPGPQPPGPHLPGIGKP
GGPGLPGQPGPKGDRGPKGLPGPQGLRGPKGDKGFGMPGAPGVKGGPPGMHPPGPVGLPGVKGKPGVTGFP
GPQGLGKPGAPGEPGPQGPVIGVPGVQPPGIPGIGKPGQDGIQGPQGFPGGKGEQGLPGLPGPPGLPGI
GKPGFPGPKGDRGMGGVPGALGPRGEKGPVIGAPGIGGPPGEPGLPGIPGMPGPPGAIQFPGPKGEGGIVG
PQPPGPKGEPGLQGFPGKPGFLGEVGGPPMRGLPGIPGPKGEAGQKGVPLPGVPLGKPGEPGIPGD
QGLQGGPIPGIGGSPGIPGPPGIPGKGEPLGPPGFGIGKPGVAGLHGPPGKPGALGPQGGPLPG
PPGPPGPPGPPAVMPPTPPPQGEYLPDMGLGIDGVKPPHAYGAKKGNNGPAYEMPAFTAELTAPFPVVG
APVKFNKLLYNGRQYNPQTGIFTCAPGVYFYAHVHCKGGNVVVALFKNNEPVMYTYDEYKKGFLDQA
SGSAVLLLLRPGDRVFLQMPSEQAAGLYAGQYVHSSFSGYLLYPM
```

TRTRPLEQKLISEEDLAANDILDYKDDDDKV

Chromatograms: https://cdn.origene.com/chromatograms/mk6237_h10.zip

Restriction Sites: SgfI-MluI

Cloning Scheme:



* The last codon before the Stop codon of the ORF

ACCN: NM_001850

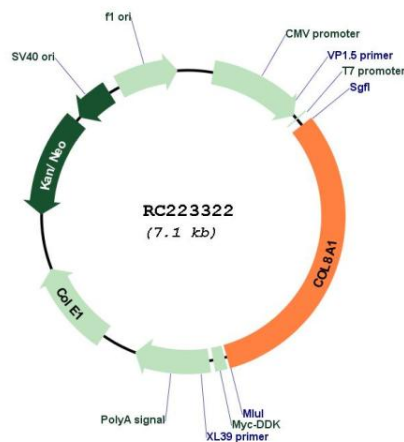
ORF Size: 2232 bp

OTI Disclaimer: The molecular sequence of this clone aligns with the gene accession number as a point of reference only. However, individual transcript sequences of the same gene can differ through naturally occurring variations (e.g. polymorphisms), each with its own valid existence. This clone is substantially in agreement with the reference, but a complete review of all prevailing variants is recommended prior to use. [More info](#)

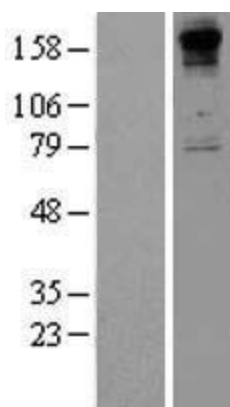
OTI Annotation: This clone was engineered to express the complete ORF with an expression tag. Expression varies depending on the nature of the gene.

Components:	The ORF clone is ion-exchange column purified and shipped in a 2D barcoded Matrix tube containing 10ug of transfection-ready, dried plasmid DNA (reconstitute with 100 ul of water).
Reconstitution Method:	<ol style="list-style-type: none">1. Centrifuge at 5,000xg for 5min.2. Carefully open the tube and add 100ul of sterile water to dissolve the DNA.3. Close the tube and incubate for 10 minutes at room temperature.4. Briefly vortex the tube and then do a quick spin (less than 5000xg) to concentrate the liquid at the bottom.5. Store the suspended plasmid at -20°C. The DNA is stable for at least one year from date of shipping when stored at -20°C.
RefSeq:	NM_001850.5
RefSeq Size:	2676 bp
RefSeq ORF:	2235 bp
Locus ID:	1295
UniProt ID:	P27658
Cytogenetics:	3q12.1
Domains:	C1Q, Collagen
Protein Families:	Druggable Genome
MW:	73.34 kDa
Gene Summary:	This gene encodes one of the two alpha chains of type VIII collagen. The gene product is a short chain collagen and a major component of the basement membrane of the corneal endothelium. The type VIII collagen fibril can be either a homo- or a heterotrimer. Alternatively spliced transcript variants encoding the same protein have been observed. [provided by RefSeq, Dec 2011]

Product images:



Circular map for RC223322



Western blot validation of overexpression lysate (Cat# [LY419708]) using anti-DDK antibody (Cat# [TA50011-100]). Left: Cell lysates from untransfected HEK293T cells; Right: Cell lysates from HEK293T cells transfected with RC223322 using transfection reagent MegaTran 2.0 (Cat# [TT210002]).