

## Product datasheet for RC223320

### TMEM132B (NM\_052907) Human Tagged ORF Clone

#### Product data:

Product Type:	Expression Plasmids
Product Name:	TMEM132B (NM_052907) Human Tagged ORF Clone
Tag:	Myc-DDK
Symbol:	TMEM132B
Mammalian Cell Selection:	Neomycin
Vector:	pCMV6-Entry (PS100001)
E. coli Selection:	Kanamycin (25 ug/mL)
ORF Nucleotide Sequence:	>RC223320 representing NM_052907 Red=Cloning site Blue=ORF Green=Tags(s)

TTTTGTAATACGACTCACTATAGGGCGGCCGGAATTCGTCGACTGGATCCGGTACCGAGGAGATCTGCC  
GCCCGATCGCC

ATGTTTGGTGCAGCATCCAGAATGGACACCACTGCTGTCTGCACCGGGGAGTGACAGAGAGTCGAGGGA  
TTGTGGATAGCCTGCAGAAGTTTTCTCGCTCCCTGCTTACCTCCCCACGAACCTGCACATCTCCAATGC  
AGAGGAGTCCTTTTTCTTAAAGAAGCCAACCAAGACCTCACAAGGAACCTCCAGTCTGCAGGCCCGGGTG  
GAGCCATTCTTCATCTACCGAGCCAGGACACCCCTATTATCAATGCCAGCTATGGCCATTTTCAGTGG  
AGAAGATAATCCCCAGGAGCTCCTGTTGACATCTACAGCCTTTGGAAACATGGACAAATTTCCCTGTC  
CTGGAAAATTGAAATCCCACATCCTTGACAGCTCCATCTACTCCAACAGACCCAAAGTGCAGACCTTGTTT  
TATGTCAGTGGCATGGGCTGGGATGACAGTGACCTTACGGAAGATCTACCCTGTGTCAAGATGTTTGCTT  
TCCCTGAGGCCAGGGAAGTGGCAGCCAGCTGTCGGCTGCAAGGGGCCAGGGCTGTGTGTGGCTGAGCT  
GGAGCTGCTGCCCGAGTGGTTCAGCTCAGGCCTGGACCTGGAACCAAGGAGGAGATCCCAGCCCTGCTC  
GGGGCCACCAGATGGAGCTCTTCTTACGCTCTACCCAGCTGACAAGGCTGGCCAGTGTCTCTGGAGG  
AGGAAGGCAAGTGGGAGAACAATATCCACTCGGGCCTGGAGAGCCCCAGCAAGCGTTTTCCAGCCCAGG  
GAGGATTGGGAGTGTGGTGTCTACCCAACCAAGATGATCTGAAGTGGTCCCTGGTGGAGCTTGGACGAG  
AATGTGGTCATCTCGGTACCTCTGAATCTAGTCCGGGAAGGGACACGGCCACCTTTTTGGTCTCTCTGA  
CCAGTAGCTCTGTGGCAGACCAGTTCACCTTAGAATTAAGGCGGACGAGGTGTGAAGATAACGGCAGT  
GAGAGTCAGCAGTGGGACCAATGGGCAGTCCAGGAGGAAATTGATAATGGCAGCACTCAGACGTCGGCC  
ACCCTCACCTGCATGGGCCATCGCCCGACACGCAGAGCAGGGTAAATGGATCCTTCTATGAGATCTTGC  
AAGTGGACTTTGGAATTGATAATAGCAGTGACCTGGCTGGGGCCAGCAGATTACCTGGCAGGTGGAGTA  
CCCATTGAGGACTCCATGAGTGAGCTGGTCTCGTCCGAGATCTTCGTCAGCCAGACAACCTTCGTGGGC  
ATCGTCCCTCTTGCCATGGACACCGAGGTTTTGAACACTGCCATTCTCACTGGAAAGCCTGTTTCAGTTC  
CTGTCAAAGTCGTGGGGTCCAGGAGGATGTTCTGTGGTTCGATGTCTGAGTCTGTGGAATGCAAGTC  
TGCCGATGAAGATGTCATTAAGGTTTTCAACAACCTGTGATTCCATTTTTGTGAATGGGAAGGAAATGAAG  
AGCAAAGTGGACACGATTGTGAACCTCACCCACCAGCACTTACCTCCAGTTCGAGGTCACTGTCTGGG  
CACCCAGGCTCCCCCTGCAGATTGAGATCTCAGACACCGAGCTGAGCCAGATCAAGGGCTGGAGGATCCC



[View online »](#)

GGTTGCTGCCAACAGAAGGCCTACCCGGGAAAGCGATGACGAGGACGATGAGGAGAAGAAGGGACGAGGC  
 TGCTCCCTGCAGTACCAGCACGCCACAGTGCCTGTCTCACCCAGTTTGTGGCCGAGTCACTGACTTAG  
 GGCAGCTGACCTACATGCTGGGCCCGACTGGCAGTTTGACATCACTGACCTTGTGACCGAGTTCATGAA  
 GGTGGAGGAGCCGAAAATCGCTCAGTTACAGGACGGCAGGACCCTGGCTGGTCCGGAGCCGGGAATAACC  
 ACGGTGCAGGTCCTCTCGCCGTTGTCTGACTCCATCCTGGCTGAGAAGACGGTGATTGTCTGGATGACC  
 GAGTCACCATCGCGGAGCTGGGAGTGCAGCTCGTAGCTGGCATGTCTCTCCCTGCAGCCACACCGAGC  
 AGACAAAAGGGCCATCGTCTCCACAGTGCCTGCCCTGGATGTTCTTCAGTCCCCACAGCAGGAAGCAATA  
 GTAAGTCTTGGATTTTGTTCAGTGATGGTTCGGTGACACCTTTAGACATTTACGATCCTAAGGATTATT  
 CTGTTACTGTCTCATCATTGGATGAAATGGTGGTGTCTGTCCAGGCAAACCTTGAGTCCAATGGCCAAT  
 TGTGGTTGCAGAGGGTGAAGGACAAGGGCCTTTGATTAAGTTAGAAATGATGATAAGTGAACCTTGTGAG  
 AAGACCAAGAGGAAGAGTGTCTTGGCCGTGGTAAAGGAAATGTCAAGGTCAAATTCGAACCAAGTAGTG  
 ATGAGCACCAAGGAGGCAGCAATGATATTGAGGGCATAAATCGGGAATATAAAGACCACCTCAGTAATTC  
 CATAGAGCGCAAGGAAACCAGGAGAGAGCAGTCCAGGAATGGTCCACCGTGGCACACCTGTTGGCCAA  
 GAGGAAAGTACCAACAAAAGCACAAACCCCGAGTCTCCATGGAAGGGAAGAATAAGTTACTCAAAGTG  
 GTGGTCCAGATGCCTTTACAAGCTTCCCCTCAAGGGAAGTACCGGACCCCAATAATCCTAGTGACCT  
 CACAGTGACCTCAAGGGGCTAACGGACTTGGAGATTGGCATGTATGCCTTGCTCTGCGTCTTGTCTG  
 GCCATTCTGGTCTTCTGATCAACTGCGTGGCCTTTCCTGGAATACAGACACAAAAGGTTTGGTGTGA  
 GTGAGCAGGGCAACATCCCCATTCCCAGACTGGGTCTGGCTTGGGAATGAAGTGAACCTTTGGAGAA  
 CCCTGTTGACATTACACTCCCATCAGAGGAGTGCACAACCATGATAGACAGGGGCTGCAGTTCGAGGAG  
 AGGAACCTCCTTCTGAATGGCAGTTCAGAGACTTTTCATAGTCAACTACTCAGACCTCTGACTATG  
 TCTATGAGAAAGAAATAAAAATGAACCTATGAATTCTTCGGGCCAAAGAGGAAGAGAGTCAAGTTCAC  
 TTCTACACCACCATCTCCAGAGGACGGCGCCCATACCAACTCCATCCTGTTTGCAGCGATGAT  
 AACATCAAGTGGTCTGCCAAGATATGGGGCTGGGGATTACAGGACTTTAGAGACTATATGAAAAGTC  
 TGCAAGACCAGATG

ACGCGTACGCGGCCGCTCGAGCAGAAACTCATCTCAGAAGAGGATCTGGCAGCAATGATATCCTGGATT  
 ACAAGGATGACGACGATAAGGTTTAA

**Protein Sequence:**

>RC223320 representing NM\_052907  
 Red=Cloning site Green=Tags(s)

MFGAASRMDTTAVCTGGVTESRGI VDSLQK FSSLPAYLPTNLHISNAEESFFLKEANQDLTRNSSLQARV  
 EPFFIYRARTPPIINASYGPFVSEKIIPQELLLSTAFGNMDFPFNWKLKSHILDSSIYSNRPKVQTLF  
 YVTGMGWDDSDLTEDLPCVKMFAFPEAREVAASCR LQGAPGLCVAE LLELPEWFS SGLDLEPEEEIPALL  
 GGTTMELFFTLYPADKAGQCPL EEEGKWENNIHSGLESPQQAFP ARERIGSVV VYPTQDDLKWSLVSLDE  
 NVVISVPLN LVREGDTATFLVSLTSSSVADQFTLR IKAAGVKITAVRVSESDQWAVQEEIDNGSTQTS A  
 TLTCMGRPDTQSRVNGSFY EILQVDFGIDNSSDLAGAQQITWQVEYPIEDSMESELVSEIFV SQTTFVG  
 IVPLAMDTEVLNTAILTGKPVSVPVKVVGVQEDGSVVDVSESV ECKSADEDV I KVSNNCDSIFVNGKEMK  
 SKVDTIVNFTHQFTSQFEVTVWAPRLPLQIEISDTELSQIKGWRIPVAANRRPTRES DDEDEEKKGRG  
 CSLQYQHATVRVLTQFVAESPD LGLTYMLGPDWQFDITDLVTEFMKVEEPKIAQLQDGR LAGREP GIT  
 TVQVLSPLSDSILA EKTIVLDDRVTIAELGVQLVAGMSLSLQPHRADKRAIVSTAAALDVLQSPQQA EI  
 VSSWILFSDGSVTPLDIYDPKDYSVTVSSLDEM VVSVQANLESKWPIVVAEGEGQGLIKLEMMISEPCQ  
 KTKRKSVLAVGKGNVVKVFEPSSEHQGGSNDIEGINREYKDHLSNSIEREGNQERAVQEW FHRGTPVQG  
 EESTNKSTTPQSPMEGKNLLKSGGPD AFTSFPTQKSPDPNPSDLTVT SRGLTDLEIGMYALLCVFCL  
 AILVFLINCVAFAWKYRHKRFVSEQGNIPHS HDWWVLGNEVELLENPVDITLPSEECTMIDRGLQFEE  
 RNFLLLNGSSQKTFHSQLLRPSDYVYEKEIKNEPMNSSGPKRKRKVF TSYTTILPEDGGPYNSILFSDSD  
 NIKWVCQDMGLGDSQDFRDYME SLQDQM

TRTRPLEQKLISEEDLAANDILDYKDDDDKV

**Chromatograms:**

[https://cdn.origene.com/chromatograms/mk8011\\_g05.zip](https://cdn.origene.com/chromatograms/mk8011_g05.zip)

**Restriction Sites:**

SgfI-MluI

**Cloning Scheme:**


**ACCN:** NM\_052907

**ORF Size:** 3234 bp

**OTI Disclaimer:** Due to the inherent nature of this plasmid, standard methods to replicate additional amounts of DNA in E. coli are highly likely to result in mutations and/or rearrangements. Therefore, OriGene does not guarantee the capability to replicate this plasmid DNA. Additional amounts of DNA can be purchased from OriGene with batch-specific, full-sequence verification at a reduced cost. Please contact our customer care team at [custsupport@origene.com](mailto:custsupport@origene.com) or by calling 301.340.3188 option 3 for pricing and delivery.

The molecular sequence of this clone aligns with the gene accession number as a point of reference only. However, individual transcript sequences of the same gene can differ through naturally occurring variations (e.g. polymorphisms), each with its own valid existence. This clone is substantially in agreement with the reference, but a complete review of all prevailing variants is recommended prior to use. [More info](#)

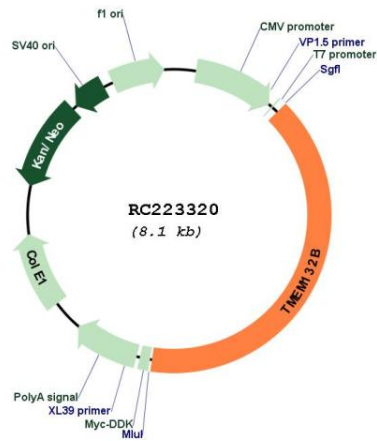
**OTI Annotation:** This clone was engineered to express the complete ORF with an expression tag. Expression varies depending on the nature of the gene.

**Components:** The ORF clone is ion-exchange column purified and shipped in a 2D barcoded Matrix tube containing 10ug of transfection-ready, dried plasmid DNA (reconstitute with 100 ul of water).

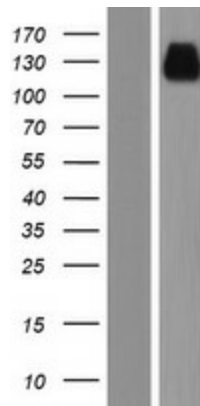
- Reconstitution Method:**
1. Centrifuge at 5,000xg for 5min.
  2. Carefully open the tube and add 100ul of sterile water to dissolve the DNA.
  3. Close the tube and incubate for 10 minutes at room temperature.
  4. Briefly vortex the tube and then do a quick spin (less than 5000xg) to concentrate the liquid at the bottom.
  5. Store the suspended plasmid at -20°C. The DNA is stable for at least one year from date of shipping when stored at -20°C.

RefSeq: [NM\\_052907.3, NP\\_443139.2](#)  
 RefSeq Size: 7578 bp  
 RefSeq ORF: 3237 bp  
 Locus ID: 114795  
 UniProt ID: [Q14DG7](#)  
 Cytogenetics: 12q24.31-q24.32  
 Protein Families: Transmembrane  
 MW: 119.3 kDa

**Product images:**



Circular map for RC223320



Western blot validation of overexpression lysate (Cat# [LY409404]) using anti-DDK antibody (Cat# [TA50011-100]). Left: Cell lysates from untransfected HEK293T cells; Right: Cell lysates from HEK293T cells transfected with RC223320 using transfection reagent MegaTran 2.0 (Cat# [TT210002]).