

Product datasheet for RC223319

SOHLH1 (NM_001101677) Human Tagged ORF Clone

Product data:

Product Type:	Expression Plasmids
Product Name:	SOHLH1 (NM_001101677) Human Tagged ORF Clone
Tag:	Myc-DDK
Symbol:	SOHLH1
Synonyms:	bA100C15.3; bHLHe80; C9orf157; NOHLH; ODG5; SPATA27; SPGF32; TEB2
Mammalian Cell Selection:	Neomycin
Vector:	pCMV6-Entry (PS100001)
E. coli Selection:	Kanamycin (25 ug/mL)
ORF Nucleotide Sequence:	>RC223319 representing NM_001101677 Red=Cloning site Blue=ORF Green=Tags(s)

TTTTGTAATACGACTCACTATAGGGCGGCCGGAATTCGTCGACTGGATCCGGTACCGAGGAGATCTGCC
GCC**CGATCGCC**

ATGGCGTCCCGGTGCTCCGAGCCCTACCCGAGGTCTCCAGAATCCCTACCGTCAGGGGATGCAACGGCT
CCCTGTCTGGTGCCCTCTCTGCTGCGAGGACTCGGCCAGGGCTCGGGCCGCCAAGGCCCTACGGT
GGCCGAGGGTCCAGCTCCTGCCTCGGCCGAACGTGATCAGCGAGAGGGAGCGCAGGAAGCGGATGTCG
TTGAGCTGTGAGCGTCTCGGGCCCTGCTGCCAGTTTCGATGGCCGGCGGGAGGACATGGCCTCGGTCC
TGGAGATGTCTGTGCAGTTCCTGCGGCTTGCCAGCGCCCTGGGGCCAGTCAGGAGCAGCAGCTATTCT
TGCTTCCCTCAAGGAAATGTGGCACTCGTTGCAGGAGGATGTTTTACAGTTGACGTTGTGAGTCAGATT
CAAGCAGGTGTGCCAGACCCTGGGACGGGAGCGTCCAGCGGGACTCGAACCCAGATGTGAAGCGTTC
TGGAAAGTCCCTGGTCCCTGGATCCAGCGTCCGCCAGCCAGAGCCCGTCCCGCACATCCTTGCCTCCTC
CAGGCAGTGGGACCCCGCAGCTGCACGTCCCTGGGCACGGACAAGTGTGAGGCACTGTTGGGGCTGTGC
CAGGTGCGGGGTGGGCTGCCCTTTCTCAGAACCTCCAGCCTGGTGGCGTGGCCCCAGGCCGGAGTC
TTCCTAAGGCTGTGAGGCCACCCTGTCTGGCCTCCGTTCTCGCAGCAGCAGACCTGCCCGTGATGAG
CGGGGAGGCCCTTGCTGGTGGCCAGGCTGGGCCCTGGCCATGGGGGCTGCACCTCTGGGGGAGCCA
GCCAAGGAGGCCCATGCTGGCGCAGGAGGCCGGTCTGCGTTGGGGTCTGATGTGGACGATGGGACGT
CCTTCTGCTGACTGCTGGTCCCAGCTCGTGGCCGGGGTCTCTGGAGGGTTCGAGGAGGCAGTGGCCCTGC
ATGGGCCCCAGCTGAGAGCAGTCCACTGGATGTTGGAGAGCCAGGCTTCTAGGGGACCCTGAGCTTGGC
TCCCAGGAGCTCCAGGACAGCCCTCTGGAGCCGTGGGGCCTGGATGTGGACTGTGCAGGCCCTGGCCCTGA
AGGACGAGGTGGAGAGCATCTTCCCTGACTTCTTGCCTGC

ACGCGTACGCGGCCGCTCGAGCAGAACTCATCTCAGAAGAGGATCTGGCAGCAATGATATCCTGGATT
ACAAGGATGACGACGATAAGGTTTAA



[View online »](#)

Protein Sequence: >RC223319 representing NM_001101677
Red=Cloning site Green=Tags(s)

MASRCSEPYPEVSRIPTRVRCNGSLSGALSCCEDSAQGSPPKAPTVAEGPSSCLRRNVISERERRKRMS
 LSCERLRALLPQFDGRREDMASVLEMSVQFLRLASALGPSQEQAHLASSKEMWHS LQEDVLQLTLSSQI
 QAGVDPDGTGASSGTRTPDVKAFLESPWSLDPASASPEPVPHILASSRQWDPASCTSLGTDKCEALLGLC
 QVRGGLPPFSEPSLVPPWPPGRSLPKAVRPPLSWPPFSQQQTLPMVSGEALGWLGGQAGPLAMGAAPLGE
 AKEDPMLAQEAGSALGSDVDDGTSFLLTAGPSSWPGSLEGRGGSGPAWAPAESSPLDVGEPGFLGDPELG
 SQELQDSPLEPWGLDVDCAGLALKDEVESIFPDFFAC

TRTRPLEQKLISEEDLAANDILDYKDDDDKV

Chromatograms: https://cdn.origene.com/chromatograms/mk8056_d04.zip

Restriction Sites: SgfI-MluI

Cloning Scheme:



* The last codon before the Stop codon of the ORF

ACCN: NM_001101677

ORF Size: 1161 bp

OTI Disclaimer: The molecular sequence of this clone aligns with the gene accession number as a point of reference only. However, individual transcript sequences of the same gene can differ through naturally occurring variations (e.g. polymorphisms), each with its own valid existence. This clone is substantially in agreement with the reference, but a complete review of all prevailing variants is recommended prior to use. [More info](#)

OTI Annotation: This clone was engineered to express the complete ORF with an expression tag. Expression varies depending on the nature of the gene.

Components: The ORF clone is ion-exchange column purified and shipped in a 2D barcoded Matrix tube containing 10ug of transfection-ready, dried plasmid DNA (reconstitute with 100 ul of water).

Reconstitution Method:

1. Centrifuge at 5,000xg for 5min.
2. Carefully open the tube and add 100ul of sterile water to dissolve the DNA.
3. Close the tube and incubate for 10 minutes at room temperature.
4. Briefly vortex the tube and then do a quick spin (less than 5000xg) to concentrate the liquid at the bottom.
5. Store the suspended plasmid at -20°C. The DNA is stable for at least one year from date of shipping when stored at -20°C.

Note: Plasmids are not sterile. For experiments where strict sterility is required, filtration with 0.22um filter is required.

RefSeq: [NM_001101677.1](#), [NP_001095147.1](#)

RefSeq Size: 1425 bp

RefSeq ORF: 1164 bp

Locus ID: 402381

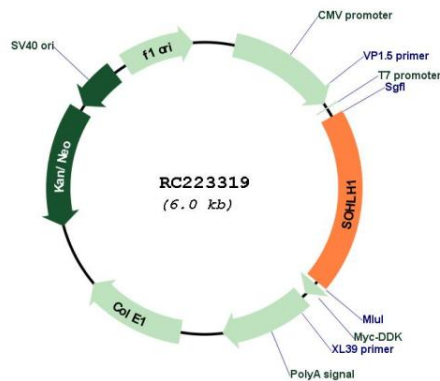
UniProt ID: [Q5JUK2](#)

Cytogenetics: 9q34.3

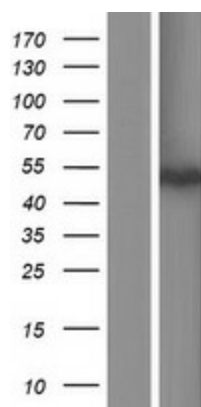
MW: 40.5 kDa

Gene Summary: This gene encodes one of testis-specific transcription factors which are essential for spermatogenesis, oogenesis and folliculogenesis. This gene is located on chromosome 9. Mutations in this gene are associated with nonobstructive azoospermia. Alternatively spliced transcript variants encoding different isoforms have been found for this gene. [provided by RefSeq, Aug 2013]

Product images:



Circular map for RC223319



Western blot validation of overexpression lysate (Cat# [LY420328]) using anti-DDK antibody (Cat# [TA50011-100]). Left: Cell lysates from untransfected HEK293T cells; Right: Cell lysates from HEK293T cells transfected with RC223319 using transfection reagent MegaTran 2.0 (Cat# [TT210002]).