

Product datasheet for RC223315

C11orf17 (AKIP1) (NM_020642) Human Tagged ORF Clone

Product data:

Product Type: Expression Plasmids
Product Name: C11orf17 (AKIP1) (NM_020642) Human Tagged ORF Clone
Tag: Myc-DDK
Symbol: C11orf17
Synonyms: BCA3; C11orf17
Mammalian Cell Selection: Neomycin
Vector: pCMV6-Entry (PS100001)
E. coli Selection: Kanamycin (25 ug/mL)
ORF Nucleotide Sequence: >RC223315 representing NM_020642
 Red=Cloning site Blue=ORF Green=Tags(s)

TTTTGTAATACGACTCACTATAGGGCGGCCGGAATTCGTCGACTGGATCCGGTACCGAGGAGATCTGCC
 GCC**CGATCGCC**

ATGGACAAGTGGTGGCGCCGAGCGCTGAATGGGGTGGACCGACGTTCCCTGCAGCGTTCAGCAAGGC
 TGGCTCTAGAAGTGTGGAGAGGGCCAAGAGGAGGGCGGTGGACTGGCATGCCCTGGAGCGTCCCAAAGG
 CTGCATGGGGTCTTGGCCGGGAGGCGCCACCTAGAGAAACAGCCGGCAGCCGGCCCGCAGCGCGTT
 CTCCCGGAGAGAGAGAAGAGAGACCCCAACCCTTAGTGCTTCCTCAGAACAATGGCTGAATTCATGG
 ACTATACTCAAGTCAGTGTGGAAATATTATTCATCTGTGCCAGAGGAAGGAGGGCAACCCATGTCTA
 TCGTTATCACAGAGGCGAGTCGAAGCTGCACATGTGCTTGGACATAGGGAATGGTCAGAGAAAAGACAGA
 AAAAAGACATCCCTTGGTCTGGAGGCAGCTATCAAATATCAGAGCATGCTCCAGAGGCATCCCAGCCTG
 CTGAGAACATCTCTAAGGACCTCTACATAGAAGTATATCCAGGGACCTATTCTGTCACTGTGGGCTCAA
 TGACTTAACCAAGAAGACTCATGTGGTAGCAGTTGATTCTGGACAAAGCGTGGACCTGGTCTTCCCTGTG

ACGCGTACGCGGCCGCTCGAGCAGAACTCATCTCAGAAGAGGATCTGGCAGCAATGATATCCTGGATT
 ACAAGGATGACGACGATAAGGTTTAA

Protein Sequence: >RC223315 representing NM_020642
 Red=Cloning site Green=Tags(s)

MDNCLAAAALNGVDRSLQRSARLALVLERAKRRAVDWHALERP KGMVGLAREAPHLEKQPAAGPQRV
 LPEREERPPTLSASFRTMAEFMDYTSSQCGKYSSVPEEGGATHVYRYHRGESKLMCLDI GNGQRKDR
 KKTSLGPGGSYQISEHAPEASQPAENISKDLYIEVYPGTYSVTVGSNDLTKKTHVAVDSGQSVDLVFPV

TRTRPLEQKLISEEDLAANDILDYKDDDDKV



[View online »](#)

Chromatograms: https://cdn.origene.com/chromatograms/mk6113_f08.zip

Restriction Sites: SgfI-MluI

Cloning Scheme:



ACCN: NM_020642

ORF Size: 630 bp

OTI Disclaimer: The molecular sequence of this clone aligns with the gene accession number as a point of reference only. However, individual transcript sequences of the same gene can differ through naturally occurring variations (e.g. polymorphisms), each with its own valid existence. This clone is substantially in agreement with the reference, but a complete review of all prevailing variants is recommended prior to use. [More info](#)

OTI Annotation: This clone was engineered to express the complete ORF with an expression tag. Expression varies depending on the nature of the gene.

Components: The ORF clone is ion-exchange column purified and shipped in a 2D barcoded Matrix tube containing 10ug of transfection-ready, dried plasmid DNA (reconstitute with 100 ul of water).

Reconstitution Method:

1. Centrifuge at 5,000xg for 5min.
2. Carefully open the tube and add 100ul of sterile water to dissolve the DNA.
3. Close the tube and incubate for 10 minutes at room temperature.
4. Briefly vortex the tube and then do a quick spin (less than 5000xg) to concentrate the liquid at the bottom.
5. Store the suspended plasmid at -20°C. The DNA is stable for at least one year from date of shipping when stored at -20°C.

RefSeq: [NM_020642.4](#)

RefSeq Size: 1332 bp

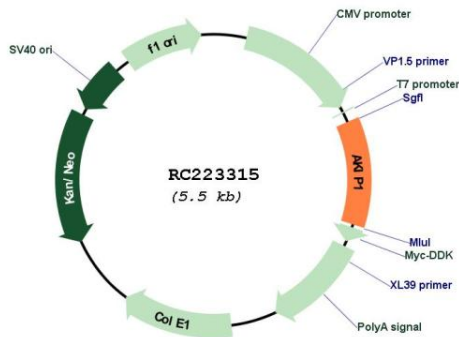
RefSeq ORF: 633 bp

Locus ID: 56672

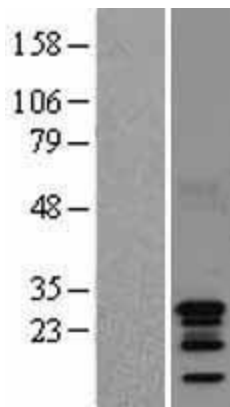
UniProt ID: [Q9NQ31](#)
 Cytogenetics: 11p15.4
 MW: 22.9 kDa

Gene Summary: This gene encodes a nuclear protein that interacts with protein kinase A catalytic subunit, and regulates the effect of the cAMP-dependent protein kinase signaling pathway on the NF-kappa-B activation cascade. Alternatively spliced transcript variants have been described for this gene. [provided by RefSeq, Oct 2011]

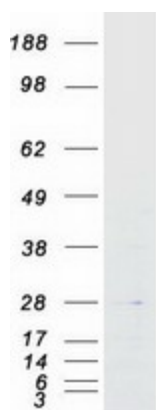
Product images:



Circular map for RC223315



Western blot validation of overexpression lysate (Cat# [LY402797]) using anti-DDK antibody (Cat# [TA50011-100]). Left: Cell lysates from untransfected HEK293T cells; Right: Cell lysates from HEK293T cells transfected with RC223315 using transfection reagent MegaTran 2.0 (Cat# [TT210002]).



Coomassie blue staining of purified AKIP1 protein (Cat# [TP323315]). The protein was produced from HEK293T cells transfected with AKIP1 cDNA clone (Cat# RC223315) using MegaTran 2.0 (Cat# [TT210002]).