

Product datasheet for **RC223305**

RANBP1 (NM_002882) Human Tagged ORF Clone

Product data:

Product Type: Expression Plasmids
Product Name: RANBP1 (NM_002882) Human Tagged ORF Clone
Tag: Myc-DDK
Symbol: RANBP1
Synonyms: HTF9A
Mammalian Cell Selection: Neomycin
Vector: pCMV6-Entry (PS100001)
E. coli Selection: Kanamycin (25 ug/mL)
ORF Nucleotide Sequence: >RC223305 representing NM_002882
Red=Cloning site Blue=ORF Green=Tags(s)

TTTTGTAATACGACTCACTATAGGGCGGCCGGAATTCGTCGACTGGATCCGGTACCGAGGAGATCTGCC
GCC**CGATCGCC**

ATGGCGGCCCAAGGACACTCATGAGGACCATGATACTTCCACTGAGAATACAGACGAGTCCAACCATG
ACCCTCAGTTTGAGCCAATAGTTTCTCTCCTGAGCAAGAAATAAAACACTGGAAGAAGATGAAGAGGA
ACTTTTTAAAATGCGGGCAAACTGTTCCGATTTGCCTCTGAGAACGATCTCCAGAATGGAAGGAGCGA
GGCACTGGTGACGTCAAGCTCCTGAAGCACAAGGAGAAAGGGCCATCCGCCTCCTCATGCGGAGGGACA
AGACCCGAAGATCTGTGCCAACACTACATCACGCCGATGATGGAGCTGAAGCCCAACGCAGGTAGCGA
CCGTGCCTGGGTCTGGAACACCCACGCTGACTTCGCCGACGAGTGCCCAAGCCAGAGCTGCTGGCCATC
CGTTCCTGAATGCTGAGAATGCACAGAAATTCAAAACAAAGTTTGAAGAATGCAGGAAAGAGATCGAAG
AGAGAGAAAAGAAAGCAGGATCAGGCAAAAATGATCATGCCGAAAAAGTGGCGGAAAAGCTAGAAGCTCT
CTCGGTGAAGGAGGAGACCAAGGAGGATGCTGAGGAGAAGCAA

ACGCGTACGCGGCCGCTCGAGCAGAACTCATCTCAGAAGAGGATCTGGCAGCAATGATATCCTGGATT
ACAAGGATGACGACGATAAGGTTTAA

Protein Sequence: >RC223305 representing NM_002882
Red=Cloning site Green=Tags(s)

MAAAKDTHEDHDTSTENTDESNHDPQFEPIVSLPEQEIKTLEEEDEELFKMRAKLFRFASENDLPEWKER
GTGDVKLLKHKEKGAIIRLLMRRDKTLKICANHYITPMELKPNAGSDRAWVWNTHADFADECPPELLAI
RFLNAENAQKFKTKFEERKEIEEREKKAGSGKNDHAEKVAEKLEALSVKEETKEDAEKQ

TRTRPLEQKLISEEDLAANDILDYKDDDDKV



[View online »](#)

Chromatograms: https://cdn.origene.com/chromatograms/mk6122_b02.zip

Restriction Sites: SgfI-MluI

Cloning Scheme:



ACCN: NM_002882

ORF Size: 603 bp

OTI Disclaimer: The molecular sequence of this clone aligns with the gene accession number as a point of reference only. However, individual transcript sequences of the same gene can differ through naturally occurring variations (e.g. polymorphisms), each with its own valid existence. This clone is substantially in agreement with the reference, but a complete review of all prevailing variants is recommended prior to use. [More info](#)

OTI Annotation: This clone was engineered to express the complete ORF with an expression tag. Expression varies depending on the nature of the gene.

Components: The ORF clone is ion-exchange column purified and shipped in a 2D barcoded Matrix tube containing 10ug of transfection-ready, dried plasmid DNA (reconstitute with 100 ul of water).

Reconstitution Method:

1. Centrifuge at 5,000xg for 5min.
2. Carefully open the tube and add 100ul of sterile water to dissolve the DNA.
3. Close the tube and incubate for 10 minutes at room temperature.
4. Briefly vortex the tube and then do a quick spin (less than 5000xg) to concentrate the liquid at the bottom.
5. Store the suspended plasmid at -20°C. The DNA is stable for at least one year from date of shipping when stored at -20°C.

RefSeq: [NM_002882.4](#)

RefSeq Size: 884 bp

RefSeq ORF: 606 bp

Locus ID: 5902

UniProt ID: [P43487](#)

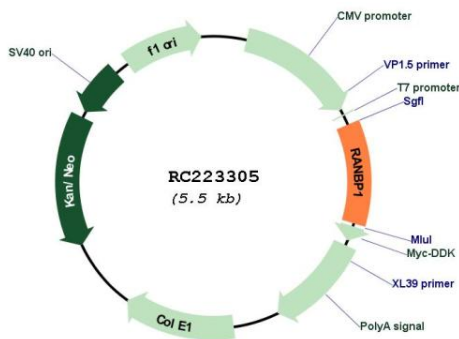
Cytogenetics: 22q11.21

Domains: Ran_BP1

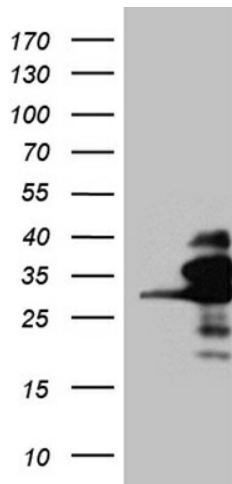
MW: 23.1 kDa

Gene Summary: This gene encodes a protein that forms a complex with Ras-related nuclear protein (Ran) and metabolizes guanoside triphosphate (GTP). This complex participates in the regulation of the cell cycle by controlling transport of proteins and nucleic acids into the nucleus. There are multiple pseudogenes for this gene on chromosomes 9, 12, 17, and X. Alternative splicing results in multiple transcript variants. [provided by RefSeq, Jul 2013]

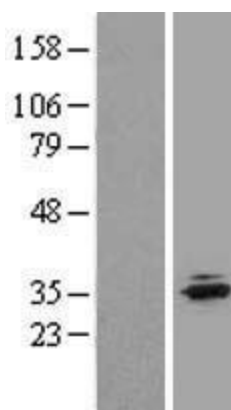
Product images:



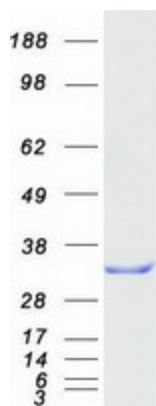
Circular map for RC223305



HEK293T cells were transfected with the pCMV6-ENTRY control (Cat# [PS100001], Left lane) or pCMV6-ENTRY RANBP1 (Cat# RC223305, Right lane) cDNA for 48 hrs and lysed. Equivalent amounts of cell lysates (5 ug per lane) were separated by SDS-PAGE and immunoblotted with anti-RANBP1 (Cat# [TA811554])(1:2000). Positive lysates [LY401015] (100ug) and [LC401015] (20ug) can be purchased separately from OriGene.



Western blot validation of overexpression lysate (Cat# [LY401015]) using anti-DDK antibody (Cat# [TA50011-100]). Left: Cell lysates from untransfected HEK293T cells; Right: Cell lysates from HEK293T cells transfected with RC223305 using transfection reagent MegaTran 2.0 (Cat# [TT210002]).



Coomassie blue staining of purified RANBP1 protein (Cat# [TP323305]). The protein was produced from HEK293T cells transfected with RANBP1 cDNA clone (Cat# RC223305) using MegaTran 2.0 (Cat# [TT210002]).