

## Product datasheet for **RC223295**

### **ABCE1 (NM\_002940) Human Tagged ORF Clone**

#### **Product data:**

Product Type:	Expression Plasmids
Product Name:	ABCE1 (NM_002940) Human Tagged ORF Clone
Tag:	Myc-DDK
Symbol:	ABCE1
Synonyms:	ABC38; OABP; RLI; RLI1; RNASEL1; RNASELI; RNS4I
Mammalian Cell Selection:	Neomycin
Vector:	pCMV6-Entry (PS100001)
E. coli Selection:	Kanamycin (25 ug/mL)



[View online »](#)

**ORF Nucleotide Sequence:**

>RC223295 representing NM\_002940  
 Red=Cloning site Blue=ORF Green=Tags(s)

TTTTGTAATACGACTCACTATAGGGCGGCCGGAATTCGTGACTGGATCCGGTACCGAGGAGATCTGCC  
 GCC**CGCATCGCC**

ATGGCAGACAAGTTAACGAGAATTGCTATTGTCAACCATGACAAATGTAACCTAAGAAATGTGCACAGG  
 AATGCAAAAAGAGTTGTCTGTAGTTTCAATGGGAAAATTATGCATAGAGTTACACCCAGAGCAAAAT  
 AGCATGGATTTCCGAAACTCTTTGTATTGGTTGTGGTATCTGTATTAAGAAATGCCCTTTGGCGCCTTA  
 TCAATTGTCAATCTACCAAGCAACTTGGAAAAAGAAACCACACATCGATATTGTGCCAATGCCTTCAAAC  
 TTCACAGGTTGCCTATCCCTCGTCCAGGTGAAGTTTTGGGATTAGTTGGAACATAAGTATTGGAAAGTC  
 AACTGCTTTAAAAATTTAGCAGGAAAACAAAAGCCAACTTGGAAAGTACGATGATCCTCTGACTGG  
 CAGGAGATTTGACTTATTTCCGTGGATCTGAATTACAAAATTACTTTACAAAGATTCTAGAAGATGACC  
 TAAAAGCCATCATCAAACCTCAATATGTAGACCAGATTCCTAAGGCTGCAAAGGGGACAGTGGGATCTAT  
 TTTGGACCGAAAAGATGAAACAAAGACACAGGCAATTGTATGTCAGCAGCTTGATTTAACCCACCTAAAA  
 GAACGAAATGTTGAAGATCTTTCAGGAGGAGAGTTGCAGAGATTTGCTTGTGCTGTCGTTTGCATACAGA  
 AAGCTGATATTTTCATGTTTGTAGGCCTTCTAGTTACCTAGATGTCAAGCAGCGTTTAAAGGCTGCTAT  
 TACTATACGATCTCTAATAAATCCAGATAGATATATCATTGTGGTGGAACATGATCTAAGTGTATTAGAC  
 TATCTCTCCGACTTCATCTGCTGTTTATATGGTGTACCAAGCGCCTATGGAGTTGCACTATGCCTTTTA  
 GTGTAAGAGAAGGCATAAACATTTTTTTGGATGGCTATGTTCCAACAGAAAACCTTGAGATTCAGAGATGC  
 ATCACTTGTTTTTAAAGTGGCTGAGACAGCAAAATGAAGAAGAAGTTAAAAAGATGTGTATGTATAAATAT  
 CCAGGAATGAAGAAAAAATGGGAGAATTTGAGCTAGCAATTTAGCTGGAGAGTTTACAGATTCTGAAA  
 TTATGGTGTGCTGGGGGAAAATGGAACGGGTAAAACGACATTTATCAGAATGCTTGTCTGGAAGACTTAA  
 ACCTGATGAAGGAGGAGAAGTACCAAGTTCTAAATGTCAGTTATAAGCCACAGAAAATTAGTCCCAATCA  
 ACTGGAAGTGTTCGCCAGTTACTACATGAAAAGATAAGAGATGCTTATACTACCCACAATTTGTGACCG  
 ATGTAATGAAGCCTCTGCAAATGAAAACATCATTGATCAAGAGGTGCAGACATTATCTGGTGGTGAAC  
 ACAGCGAGTAGCTTAGCCCTTTGCTTGGGCAAACCTGCTGATGTCTATTTAATTGATGAACCATCTGCA  
 TATTTGGATTCTGAGCAAAGACTGATGGCAGCTCGAGTTGTCAAACGTTTCATACTCCATGCAAAAAAGA  
 CAGCCTTTGTTGTGAACATGACTTCATCATGGCCACCTATCTAGCGGATCGCGTCATCGTTTTTGTG  
 TGTTCCATCTAAGAACACAGTTGCAAACAGTCTCAAACCTTTTGGCTGGCATGAATAATTTTTGTCT  
 CAGCTTGAATACATTCAGAAGAGATCCAACAACCTATAGGCCACGAATAACAACCTTAATTCATTA  
 AGGATGTAGAACAAAAGAAGAGTGGAACTACTTTTTCTTGGATGAT

**ACGCGT**ACGCGGCCGCTCGAGCAGAAACTCATCTCAGAAGAGGATCTGGCAGCAAATGATATCCTGGATT  
 ACAAGGATGACGACGATAAGGTTTAA

**Protein Sequence:**

>RC223295 representing NM\_002940  
 Red=Cloning site Green=Tags(s)

MADKLTRIAIVNHDKCKPKKCRQECKKSCPVVRMGKLCIEVTPQSKIAWISETLCIGCGICIKKCPFGAL  
 SIVNLPNLEKETTHRYCANAFKLHRLPIPRPGEVVLGLVGTNGIGKSTALKILAGKQKPNLKYDDPPDW  
 QEILTYFRGSELQNYFTKILEDDLKAIKPYVDQIPKAAKGTVGSILDRKDETKQAIVCQQLDLTHLK  
 ERNVEDLSGGELQRFACAVVCIQKADIFMFDEPSSYLDVKQRLKAAITIRSLINPDRIIIVVEHDLVLD  
 YLSDFICCLYGVPSAYGVVMPFSVREGINIFLDGYVPTENLRFDRASLVFKVAETANEEVVKMCMYKY  
 PGMKKMGFEFELAIVAGEFTDSEIMVMLGENGTGKTTFIRMLAGRLKPDEGGEVPLNVSYPKQKISPKS  
 TGSVRQLLHEKIRDAYTHPQFVTDVMKPLQIENIIDQEVQTLSSGELQRVALALCLGKPADVYLLIDEPSA  
 YLDSEQLRMAARVVKRFLHAKKTAFFVVEHDFIMATYLADRVIVFDGVPKNTVANSPTLLAGMKNKFLS  
 QLEITFRDRPNRYRPRINKLNSIKDVEQKSGNYFFLDD

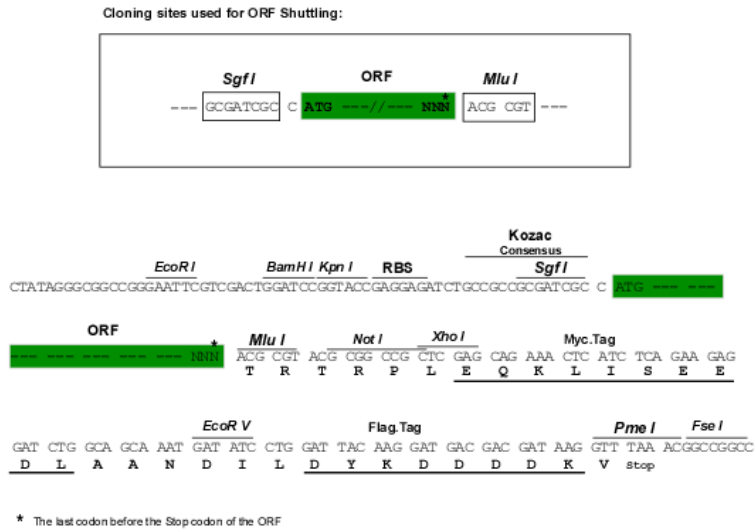
**TR**TRPLEQKLISEEDLAANDILDYKDDDDKV

**Chromatograms:**

[https://cdn.origene.com/chromatograms/mk6036\\_c05.zip](https://cdn.origene.com/chromatograms/mk6036_c05.zip)

Restriction Sites: SgfI-MluI

Cloning Scheme:



ACCN: NM\_002940

ORF Size: 1797 bp

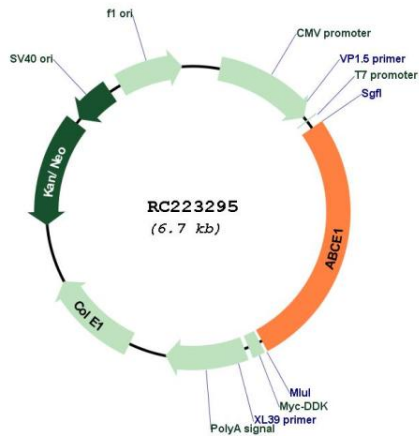
OTI Disclaimer: Due to the inherent nature of this plasmid, standard methods to replicate additional amounts of DNA in E. coli are highly likely to result in mutations and/or rearrangements. Therefore, OriGene does not guarantee the capability to replicate this plasmid DNA. Additional amounts of DNA can be purchased from OriGene with batch-specific, full-sequence verification at a reduced cost. Please contact our customer care team at [custsupport@origene.com](mailto:custsupport@origene.com) or by calling 301.340.3188 option 3 for pricing and delivery.

The molecular sequence of this clone aligns with the gene accession number as a point of reference only. However, individual transcript sequences of the same gene can differ through naturally occurring variations (e.g. polymorphisms), each with its own valid existence. This clone is substantially in agreement with the reference, but a complete review of all prevailing variants is recommended prior to use. [More info](#)

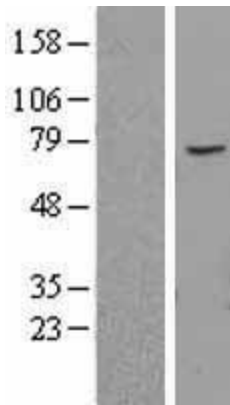
OTI Annotation: This clone was engineered to express the complete ORF with an expression tag. Expression varies depending on the nature of the gene.

Components: The ORF clone is ion-exchange column purified and shipped in a 2D barcoded Matrix tube containing 10ug of transfection-ready, dried plasmid DNA (reconstitute with 100 ul of water).

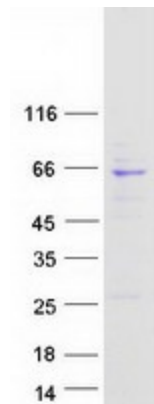
<b>Reconstitution Method:</b>	<ol style="list-style-type: none"><li>1. Centrifuge at 5,000xg for 5min.</li><li>2. Carefully open the tube and add 100ul of sterile water to dissolve the DNA.</li><li>3. Close the tube and incubate for 10 minutes at room temperature.</li><li>4. Briefly vortex the tube and then do a quick spin (less than 5000xg) to concentrate the liquid at the bottom.</li><li>5. Store the suspended plasmid at -20°C. The DNA is stable for at least one year from date of shipping when stored at -20°C.</li></ol>
<b>RefSeq:</b>	<a href="#">NM_002940.3</a>
<b>RefSeq Size:</b>	3568 bp
<b>RefSeq ORF:</b>	1800 bp
<b>Locus ID:</b>	6059
<b>UniProt ID:</b>	<a href="#">P61221</a>
<b>Cytogenetics:</b>	4q31.21
<b>Domains:</b>	fer4, ABC_tran, AAA, RLI
<b>Protein Families:</b>	Druggable Genome
<b>MW:</b>	67.1 kDa
<b>Gene Summary:</b>	<p>The protein encoded by this gene is a member of the superfamily of ATP-binding cassette (ABC) transporters. ABC proteins transport various molecules across extra- and intra-cellular membranes. ABC genes are divided into seven distinct subfamilies (ABC1, MDR/TAP, MRP, ALD, OABP, GCN20, White). This protein is a member of the OABP subfamily. Alternatively referred to as the RNase L inhibitor, this protein functions to block the activity of ribonuclease L. Activation of ribonuclease L leads to inhibition of protein synthesis in the 2-5A/RNase L system, the central pathway for viral interferon action. Two transcript variants encoding the same protein have been found for this gene. [provided by RefSeq, Jul 2008]</p>

**Product images:**


Circular map for RC223295



Western blot validation of overexpression lysate (Cat# [LY401029]) using anti-DDK antibody (Cat# [TA50011-100]). Left: Cell lysates from untransfected HEK293T cells; Right: Cell lysates from HEK293T cells transfected with RC223295 using transfection reagent MegaTran 2.0 (Cat# [TT210002]).



Coomassie blue staining of purified ABCE1 protein (Cat# [TP323295]). The protein was produced from HEK293T cells transfected with ABCE1 cDNA clone (Cat# RC223295) using MegaTran 2.0 (Cat# [TT210002]).