

Product datasheet for RC223291

CCR5 (NM_000579) Human Tagged ORF Clone

Product data:

Product Type:	Expression Plasmids
Product Name:	CCR5 (NM_000579) Human Tagged ORF Clone
Tag:	Myc-DDK
Symbol:	CCR5
Synonyms:	CC-CKR-5; CCKR5; CCR-5; CD195; CKR-5; CKR5; CMKBR5; IDDM22
Mammalian Cell Selection:	Neomycin
Vector:	pCMV6-Entry (PS100001)
E. coli Selection:	Kanamycin (25 ug/mL)
ORF Nucleotide Sequence:	>RC223291 representing NM_000579 Red=Cloning site Blue=ORF Green=Tags(s)

TTTTGTAATACGACTCACTATAGGGCGCCGGGAATTCGTCGACTGGATCCGGTACCGAGGAGATCTGCC
GCC**CGATCGCC**

ATGGATTATCAAGTGCAAGTCCAATCTATGACATCAATTATTATACATCGGAGCCCTGCCAAAAATCA
ATGTGAAGCAAATCGCAGCCCGCTCCTGCCTCCGCTCTACTCACTGGTGTTCATCTTTGGTTTTGTGGG
CAACATGCTGGTCATCCTCATCCTGATAAACTGCAAAAGGCTGAAGAGCATGACTGACATCTACCTGCTC
AACCTGGCCATCTCTGACCTGTTTTCTTCTTACTGTCCCTTCTGGGCTCACTATGCTGCCGCCAGT
GGGACTTTGGAAATACAATGTGTCAACTTTGACAGGGCTCTATTTTATAGGCTTCTTCTGGAATCTT
CTTCATCATCCTCCTGACAATCGATAGGTACCTGGCTGTGCTCCATGCTGTGTTTGTCTTAAAGCCAGG
ACGGTCACCTTTGGGGTGGTGACAAGTGTGATCACTTGGGTGGTGGCTGTGTTTGCCTCTCTCCAGGAA
TCATCTTTACCAGATCTCAAAAAGAAGGTCTTCATTACACCTGCAGCTCTCATTTTCCATACAGTCAGTA
TCAATTCTGGAAGAATTTCCAGACATTAAGATAGTCACTTTGGGGCTGGTCTGCCGCTGCTTGTTCATG
GTCATCTGCTACTCGGAATCCTAAAACCTCTGCTTCGGTGTGCAAAAGGAGGACAGGGCTG
TGAGGCTTATCTTACCATCATGATTGTTTATTTCTTCTTCTGGGCTCCCTACAACATTGCTTCTCTCT
GAACACCTTCCAGGAATCTTTGGCCTGAATAATTGCAGTAGCTAACAGGTTGGACCAAGCTATGCAG
GTGACAGAGACTTTGGGATGACGCACTGCTGCATCAACCCCATCTATGCCTTTGTCCGGGAGAAGT
TCAGAAACTACCTCTTAGTCTTCTTCCAAAAGCACATTGCCAAAACGCTTCTGCAAAATGCTGTTCTATTTT
CCAGCAAGAGGCTCCCGAGCGAGCAAGCTCAGTTTACACCCGATCCACTGGGGAGCAGGAAATATCTGTG
GGCTTG

ACGCGTACGCGGCCGCTCGAGCAGAAACTCATCTCAGAAGAGGATCTGGCAGCAAATGATATCCTGGATT
ACAAGGATGACGACGATAAGGTTAA



[View online »](#)

Protein Sequence: >RC223291 representing NM_000579
Red=Cloning site Green=Tags(s)

MDYQVSSPIYDINYYTSEPCQKINVKQIAARLLPPLYSLVFIGFVGNMLVILILINCKRLKSMTDIYLL
 NLAISDLFFLLTVPFWAHYAAAQWDFGNTMCQLLTGLYFIGFFSGIFFIILLTIDRYLAVVHAVFALKAR
 TVTFGVVTSVITWVVAVFASLPGIIFTRSQKEGLHYTCSSHPYSQYQFWKNFQTLKIVILGLVLPLLVM
 VICYSGILKTLRLCRNEKKRHRAVRLIFTIMIVYFLFWAPYNIIVLLNTFQEFFGLNNCSSNRLDQAMQ
 VTETLGMTHCCINPIIYAFVGEKFRNYLLVFFQKHIAKRFCKCCSIFQAEAPERASSVYTRSTGEQEISV
 GL

TRTRPLEQKLISEEDLAANDILDYKDDDDKV

Chromatograms: https://cdn.origene.com/chromatograms/mk6271_b03.zip

Restriction Sites: SgfI-MluI

Cloning Scheme:



* The last codon before the Stop codon of the ORF

ACCN: NM_000579

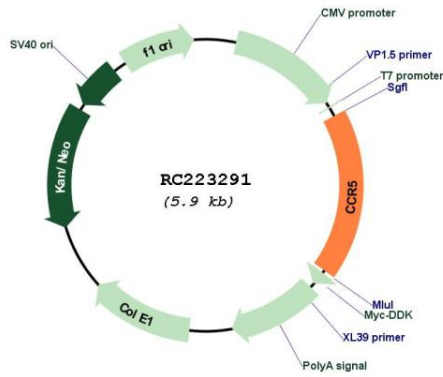
ORF Size: 1056 bp

OTI Disclaimer: Due to the inherent nature of this plasmid, standard methods to replicate additional amounts of DNA in E. coli are highly likely to result in mutations and/or rearrangements. Therefore, OriGene does not guarantee the capability to replicate this plasmid DNA. Additional amounts of DNA can be purchased from OriGene with batch-specific, full-sequence verification at a reduced cost. Please contact our customer care team at custsupport@origene.com or by calling 301.340.3188 option 3 for pricing and delivery.

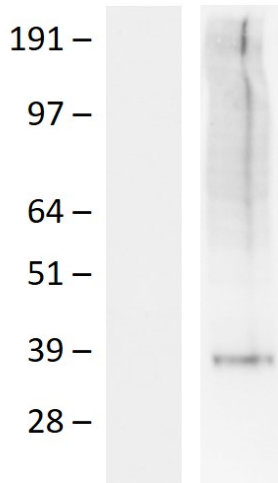
The molecular sequence of this clone aligns with the gene accession number as a point of reference only. However, individual transcript sequences of the same gene can differ through naturally occurring variations (e.g. polymorphisms), each with its own valid existence. This clone is substantially in agreement with the reference, but a complete review of all prevailing variants is recommended prior to use. [More info](#)

OTI Annotation:	This clone was engineered to express the complete ORF with an expression tag. Expression varies depending on the nature of the gene.
Components:	The ORF clone is ion-exchange column purified and shipped in a 2D barcoded Matrix tube containing 10ug of transfection-ready, dried plasmid DNA (reconstitute with 100 ul of water).
Reconstitution Method:	<ol style="list-style-type: none">1. Centrifuge at 5,000xg for 5min.2. Carefully open the tube and add 100ul of sterile water to dissolve the DNA.3. Close the tube and incubate for 10 minutes at room temperature.4. Briefly vortex the tube and then do a quick spin (less than 5000xg) to concentrate the liquid at the bottom.5. Store the suspended plasmid at -20°C. The DNA is stable for at least one year from date of shipping when stored at -20°C.
Note:	Plasmids are not sterile. For experiments where strict sterility is required, filtration with 0.22um filter is required.
RefSeq:	NM_000579.3 , NP_000570.1
RefSeq Size:	3655 bp
RefSeq ORF:	1059 bp
Locus ID:	1234
UniProt ID:	P51681
Cytogenetics:	3p21.31
Protein Families:	Druggable Genome, ES Cell Differentiation/IPS, GPCR, Transmembrane
Protein Pathways:	Chemokine signaling pathway, Cytokine-cytokine receptor interaction, Endocytosis
MW:	40.3 kDa
Gene Summary:	This gene encodes a member of the beta chemokine receptor family, which is predicted to be a seven transmembrane protein similar to G protein-coupled receptors. This protein is expressed by T cells and macrophages, and is known to be an important co-receptor for macrophage-tropic virus, including HIV, to enter host cells. Defective alleles of this gene have been associated with the HIV infection resistance. The ligands of this receptor include monocyte chemoattractant protein 2 (MCP-2), macrophage inflammatory protein 1 alpha (MIP-1 alpha), macrophage inflammatory protein 1 beta (MIP-1 beta) and regulated on activation normal T expressed and secreted protein (RANTES). Expression of this gene was also detected in a promyeloblastic cell line, suggesting that this protein may play a role in granulocyte lineage proliferation and differentiation. This gene is located at the chemokine receptor gene cluster region. An allelic polymorphism in this gene results in both functional and non-functional alleles; the reference genome represents the functional allele. Two transcript variants encoding the same protein have been found for this gene. [provided by RefSeq, Jul 2015]

Product images:



Circular map for RC223291



Western blot validation of overexpression lysate (Cat# [LY424630]) using anti-DDK antibody (Cat# [TA592569]). Left: Cell lysates from untransfected HEK293T cells; Right: Cell lysates from HEK293T cells transfected with RC223291 using transfection reagent PEI.