

Product datasheet for **RC223288**

SLC24A5 (NM_205850) Human Tagged ORF Clone

Product data:

Product Type:	Expression Plasmids
Product Name:	SLC24A5 (NM_205850) Human Tagged ORF Clone
Tag:	Myc-DDK
Symbol:	SLC24A5
Synonyms:	JSX; NCKX5; OCA6; SHEP4
Mammalian Cell Selection:	Neomycin
Vector:	pCMV6-Entry (PS100001)
E. coli Selection:	Kanamycin (25 ug/mL)



[View online »](#)

ORF Nucleotide Sequence:

>RC223288 ORF sequence
 Red=Cloning site Blue=ORF Green=Tags(s)

TTTTGTAATACGACTCACTATAGGGCGGCCGGAATTCGTCGACTGGATCCGGTACCGAGGAGATCTGCC
 GCC**GCGATCGCC**

ATGCAGACAAAGGGGGCAAACATGGGCGAGAAGGGCTCTGTTGCTCGGCATCCTGTGGGCCACTGCAC
 ATCTGCCTCTCTAGGGACCTCCCTGCCCAACGTCTCCAAGGGCCACAGGAAATAGCACCCAATGTGT
 TATTTCTCCATCATCGGAGTTTCCCGAAGGGTTTTTCACGAGACAGGAGCGCAGAGATGGAGGCATCATA
 ATCTATTTCTAATTATCGTTTACATGTTTCATGGCCATATCTATTGTCTGTGATGAATACTTCTACCCCT
 CCCTGGAAATCATCAGTGAATCCCTTGGATTGTCTCAGGATGTTGCAGGCACAACTTTCATGGCAGCGGG
 CAGTTCAGCTCCTGAATTAGTTACTGCTTTCCTAGGTGATTTATCACAAGGGAGATATTGGCATTAGC
 ACCATCCTTGGATCTGCAATTTAATCTCCTTGGCATCTGTGCTGCCTGTGTTTGTCTATAACGG
 TCTCAACTATCATGTTGGCCCTATTCAGAGACTGTGCAGCGTACACAATTAGTCAGCAGCAGTTCT
 TGGTATAATATATGACAACCAAGTTTACTGGTATGAAGGGGCTTACTGCTTTTGTATATGGATTGTAT
 GTTTTGGTGTGTTTTGACATTAATAAATAACCAATATATTATAAAGAAATGCAGTCCTTGTGCGCCT
 GTCTTGCCAAAGCTATGGAGAGAAGTGAACAACAGCCACTGATGGGCTGGGAAGTGAAGGTCAACCATT
 CATTCTGTCGGCAATCAAGAACTGATAGTGAATATTTTATGAAGATTCTGGCTACTCTCAGCTCTCTATA
 AGTTTACATGGCCTTAGTCAGGTTTCTGAAGATCCACCAAGTGTTCACACATGCCTGAAGCAGACTTAA
 AAAGAATTTTTGGGTATTATCCCTTCTATTATTACATTACTTTTTCTAACCACACCAGATTGTAGAAA
 AAAGTTTTGGAAAACTACTTTGTGATAACCTTTTTCATGTCTGCAATATGGATATCCGCATTTACATAT
 ATCCTGGTTTGGATGGTACAATAACTGGGAAACACTAGAAATCCCGATACAGTAATGGGCCTTACTT
 TATTAGCAGCAGGAACAAGCATACCAGACACAATTGCAAGTGTGTTGGTTGCAAGAAAAGGGAAAGGAGA
 TATGGCTATGTCTAACATCGTGGGATCCAATGTGTTTGATATGTTGTGCCTTGGTATTCCATGGTTTATT
 AAAACTGCATTTATAAATGGATCAGCTCCTGCAGAAGTAAACAGCAGAGGACTAACTTACATAACCATCT
 CTCTCAACATTTCAATTATTTTTCTTTTTTAGCAGTTCACTTCAATGGCTGAAACTAGACAGAAAAGTT
 GGGAAATAGTCTGCCTATTATCACTTGGGGCTTGTACATTATCAGTTCTATATGAACTTGAATTATT
 GGAAATAATAAAATAAGGGGCTGTGGAGGT

ACGCGTACGCGGCCGCTCGAGCAGAACTCATCTCAGAAGAGGATCTGGCAGCAAATGATATCCTGGATT
 ACAAGGATGACGACGATAAGGTTTAA

Protein Sequence:

>RC223288 protein sequence
 Red=Cloning site Green=Tags(s)

MQTKGGQWARRALLLGLWATAHLPLSGTSLPQRLPRATGNSTQCVISPSSEFPEGFFTRQERRDGGII
 IYFLIIVYMFMAISIVCDEYFLPSLEIISESLGLSQDVAGTTFMAAGSSAPELVTAFLGVFITKGDIGIS
 TILGSAIYNLLGICAACGLLNTVSTLSCWPLFRDCAAYTISAAAVLGIYDNQVYWYEGALLLLIYGLY
 VLVLCFDIKINQYIIKKCSPCCACLAKAMERSEQQLMGWEDEGQPFIRRQSRDTSGIFYEDSGYSQLSI
 SLHGLSQVSEDPSPVFNMPPEADLKRIFWVLSLPIITLLFLTTPDCRKKFWKNYFVITFFMSAIWISAFTY
 ILVWVMTITGETLEIPDTVMGLTLLAAGTSIPDTIASVLVARKGKGMAMSNIVGSNVFDMCLGIPWFI
 KTAFIGNSAPAEVNSRGLTYITISLNIISIFLFLAVHFNWKLDRKLGIVCLLSYLGLATLSVLVELGII
 GNNKIRGCGG

TRTRPLEQKLISEEDLAANDILDYKDDDDKV

Chromatograms:

https://cdn.origene.com/chromatograms/mk6462_h12.zip

Restriction Sites:

SgfI-MluI

Cloning Scheme:



ACCN: NM_205850

ORF Size: 1500 bp

OTI Disclaimer: The molecular sequence of this clone aligns with the gene accession number as a point of reference only. However, individual transcript sequences of the same gene can differ through naturally occurring variations (e.g. polymorphisms), each with its own valid existence. This clone is substantially in agreement with the reference, but a complete review of all prevailing variants is recommended prior to use. [More info](#)

OTI Annotation: This clone was engineered to express the complete ORF with an expression tag. Expression varies depending on the nature of the gene.

Components: The ORF clone is ion-exchange column purified and shipped in a 2D barcoded Matrix tube containing 10ug of transfection-ready, dried plasmid DNA (reconstitute with 100 ul of water).

- Reconstitution Method:
1. Centrifuge at 5,000xg for 5min.
 2. Carefully open the tube and add 100ul of sterile water to dissolve the DNA.
 3. Close the tube and incubate for 10 minutes at room temperature.
 4. Briefly vortex the tube and then do a quick spin (less than 5000xg) to concentrate the liquid at the bottom.
 5. Store the suspended plasmid at -20°C. The DNA is stable for at least one year from date of shipping when stored at -20°C.

RefSeq: [NM_205850.3](#)

RefSeq Size: 1617 bp

RefSeq ORF: 1503 bp

Locus ID: 283652

UniProt ID: [Q71RS6](#)

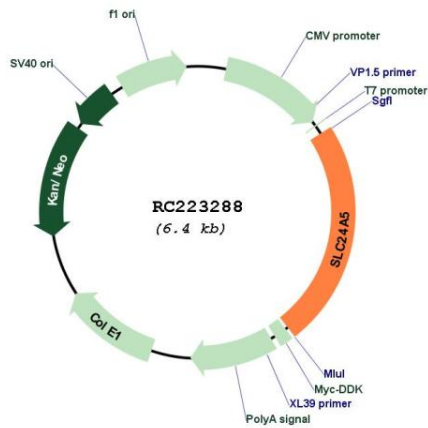
Cytogenetics: 15q21.1

Protein Families: Druggable Genome, Transmembrane

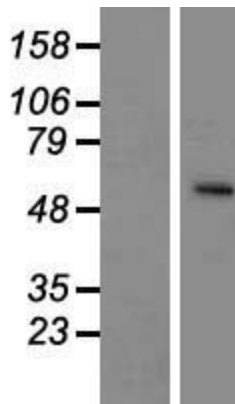
MW: 54.9 kDa

Gene Summary: This gene is a member of the potassium-dependent sodium/calcium exchanger family and encodes an intracellular membrane protein with 2 large hydrophilic loops and 2 sets of multiple transmembrane-spanning segments. Sequence variation in this gene has been associated with differences in skin pigmentation. [provided by RefSeq, Jul 2008]

Product images:



Circular map for RC223288



Western blot validation of overexpression lysate (Cat# [LY404200]) using anti-DDK antibody (Cat# [TA50011-100]). Left: Cell lysates from untransfected HEK293T cells; Right: Cell lysates from HEK293T cells transfected with RC223288 using transfection reagent MegaTran 2.0 (Cat# [TT210002]).