

## Product datasheet for **RC223282**

### **C9ORF91 (TMEM268) (NM\_153045) Human Tagged ORF Clone**

#### Product data:

Product Type:	Expression Plasmids
Product Name:	C9ORF91 (TMEM268) (NM_153045) Human Tagged ORF Clone
Tag:	Myc-DDK
Symbol:	C9ORF91
Synonyms:	C9orf91
Mammalian Cell Selection:	Neomycin
Vector:	pCMV6-Entry (PS100001)
E. coli Selection:	Kanamycin (25 ug/mL)
ORF Nucleotide Sequence:	>RC223282 ORF sequence Red=Cloning site Blue=ORF Green=Tags(s)

TTTTGTAATACGACTCACTATAGGGCGGCCGGAATTCGTCGACTGGATCCGGTACCGAGGAGATCTGCC  
GCC**CGATCGCC**

ATGGCCTGTGAACCACAGGTGGACCCGGGGGCCACTGGCCATTGCCCCCTCCTCCCCTGGCTGGAGTG  
CCCTGCCTGGAGGGAGCCCTCCTGGCTGGGGGCAAGAGCTCCACAATGGCCAGGTCCTACTGTTCTCCG  
GATTGACAATACCTGTGCACCCATCTCCTCGACCTGGGAGCCGAGAAGAGCAACTGCAAATTGGGGC  
ATCCAGGTCCTGGCTGACCAGTACAGGAGCTTGGCTGAGAGTGCCTCTTGGAGCCCAAGTGAGAAGAT  
ATATCATCTACAACCTCGAGGCCTATGCGGCTGGCCTTTGCTGTGGTTTTCTATGTGGTGGTGTGGGCCAA  
TATCTACTCTACCAGTCAGATGTTTGCCTTGGGAACCACTGGGCTGGCATGCTGCTCGTACCCTGGCC  
GCGGTGAGCCTGACCTTGACTCTTGTGCTGGTCTTTGAAAGACACCAGAAGAAGGCCAACCAACACGG  
ACCTGAGGCTGGCAGTGCCAATGGAGCCCTCCTGAGACACCGGGTGTGCTGGGGGTGACAGACACAGT  
GGAAGGATGCCAGAGTGTGATTCAGCTTTGGTTTGTCTACTTCGACCTGGAGAAGTGTGTGCAGTTTTTG  
TCTGATCATGTTCAAGAAATGAAGACTAGCCAAGAGTCTTGTGCTGAGAAGCAGATTGAGCCAGTTGTGTG  
TTGTGATGGAGACTGGGGTGAGCCCTGCAACAGCGGAGGGGCTGAGAAGTTGGAGGATGCTCCTCCTCCT  
GCCCGCAATTCTTGTCTAACGAGAGGCCACTCATGCAGACTGAGCTTCATCAGCTTGTTCCTGAGGCT  
GAGCCGGAGGAAATGGCCCGCCAGCTGCTGGCAGTGTGGGGCTACTACATCCGGCTTCTAGTGACCT  
CCAGCTCCCTCAGGCAATGGGGACACGACACAGCAACTCTCCGAGAATCCATGCCCTGCCAGCTCAT  
AGAAGCCTACATCCTAGGCACAGGGTGTGCCGTTCTGGCGAGG

**ACGCGT**ACGCGGCCGCTCGAGCAGAAACTCATCTCAGAAGAGGATCTGGCAGCAAATGATATCCTGGATT  
ACAAGGATGACGACGATAAGGTTTAA



[View online »](#)

**Protein Sequence:** >RC223282 protein sequence  
Red=Cloning site Green=Tags(s)

MACEPQVDPGATGPLPPSSPGWSALPGGSPPGWGQELHNGQVLTVLRIDNTCAPISFDLGAAEEQLQTWG  
 IQVPADQYRSLAESALLEPQVRRYIIYNSRPMRLAFVVFVVVWANIYSTSQMFALGNHWAGMLLVTLA  
 AVSLTLTLVLFERHQKANTNTDLRLAAANGALLRHRVLLGVTDTEGCQSVIQLWFVYFDLENCVQFL  
 SDHVQEMKTSQESLLRSRLSQLCVVMTGVSPATAEGPENLEDAPLLPGNSCPNERPLMQTELHQLVPEA  
 EPEEMARQLLAVFGGYYIRLLVTSQLPQAMGTRHTNSPRIPCQCQLIEAYILGTGCCPFLAR

TRTRPLEQKLISEEDLAANDILDYKDDDDKV

**Chromatograms:** [https://cdn.origene.com/chromatograms/mk6560\\_g07.zip](https://cdn.origene.com/chromatograms/mk6560_g07.zip)

**Restriction Sites:** SgfI-MluI

**Cloning Scheme:**

Cloning sites used for ORF Shuttling:



\* The last codon before the Stop codon of the ORF

**ACCN:** NM\_153045

**ORF Size:** 1026 bp

**OTI Disclaimer:** The molecular sequence of this clone aligns with the gene accession number as a point of reference only. However, individual transcript sequences of the same gene can differ through naturally occurring variations (e.g. polymorphisms), each with its own valid existence. This clone is substantially in agreement with the reference, but a complete review of all prevailing variants is recommended prior to use. [More info](#)

**OTI Annotation:** This clone was engineered to express the complete ORF with an expression tag. Expression varies depending on the nature of the gene.

**Components:** The ORF clone is ion-exchange column purified and shipped in a 2D barcoded Matrix tube containing 10ug of transfection-ready, dried plasmid DNA (reconstitute with 100 ul of water).

**Reconstitution Method:**

1. Centrifuge at 5,000xg for 5min.
2. Carefully open the tube and add 100ul of sterile water to dissolve the DNA.
3. Close the tube and incubate for 10 minutes at room temperature.
4. Briefly vortex the tube and then do a quick spin (less than 5000xg) to concentrate the liquid at the bottom.
5. Store the suspended plasmid at -20°C. The DNA is stable for at least one year from date of shipping when stored at -20°C.

**RefSeq:** [NM\\_153045.4](#)

**RefSeq Size:** 4413 bp

**RefSeq ORF:** 1029 bp

**Locus ID:** 203197

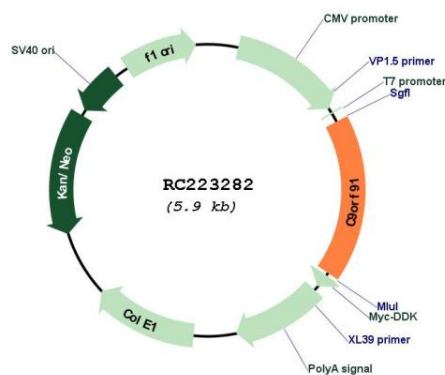
**UniProt ID:** [Q5VZI3](#)

**Cytogenetics:** 9q32

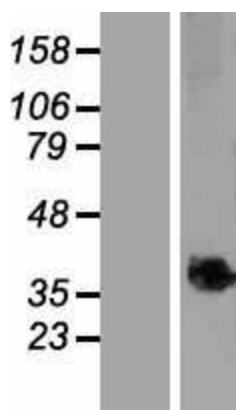
**Protein Families:** Transmembrane

**MW:** 37.6 kDa

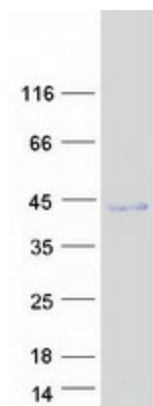
### Product images:



Circular map for RC223282



Western blot validation of overexpression lysate (Cat# [LY407032]) using anti-DDK antibody (Cat# [TA50011-100]). Left: Cell lysates from untransfected HEK293T cells; Right: Cell lysates from HEK293T cells transfected with RC223282 using transfection reagent MegaTran 2.0 (Cat# [TT210002]).



Coomassie blue staining of purified TMEM268 protein (Cat# [TP323282]). The protein was produced from HEK293T cells transfected with TMEM268 cDNA clone (Cat# RC223282) using MegaTran 2.0 (Cat# [TT210002]).