

## Product datasheet for **RC223270**

### TM9SF3 (NM\_020123) Human Tagged ORF Clone

#### Product data:

|                           |   |
|---------------------------|---|
| Product Type:             | Expression Plasmids                       |
| Product Name:             | TM9SF3 (NM_020123) Human Tagged ORF Clone |
| Tag:                      | Myc-DDK                                   |
| Symbol:                   | TM9SF3                                    |
| Synonyms:                 | EP70-P-iso; SMBP                          |
| Mammalian Cell Selection: | Neomycin                                  |
| Vector:                   | pCMV6-Entry (PS100001)                    |
| E. coli Selection:        | Kanamycin (25 ug/mL)                      |



[View online »](#)

**ORF Nucleotide Sequence:**

>RC223270 representing NM\_020123  
 Red=Cloning site Blue=ORF Green=Tags(s)

TTTTGTAATACGACTCACTATAGGGCGGCCGGGAATTCGTCGACTGGATCCGGTACCGAGGAGATCTGCC  
 GCC**CGGATCGCC**

ATGAGGCCGCTGCCTGGCGCTCTTGGCGTGGCGCGGCCCGCGCTGTGGCTGCTGCTGCTGCTGCTG  
 CCCGACCCGGGCGGACGAGCACGAACACACGTATCAAGATAAAGAGGAAGTTGCTTATGGATGAATAC  
 TGTGGGCCCTACCATAATCGTCAAGAAACATATAAGTACTTTTCACTTCCATTCTGTGTGGGTCAAAA  
 AAAAGTATCAGTCATTACCATGAACTCTGGGAGAAGCACTTCAAGGGTTGAATTGGAATTTAGTGGTC  
 TGGATATTAATTTAAAGATGATGTGATGCCAGCCACTTACTGTGAAATGATTTAGATAAAGAAAAGAG  
 AGATGCATTTGTATGCCATAAAAAATCATTACTGGTACCAGATGTACATAGATGATTTACCAATATGG  
 GGTATTGTTGGTGGCTGATGAAAATGGAGAAGATTACTATCTTTGGACCTATAAAAAACTTGAATAG  
 GTTTAATGGAATCGAATTGTTGATGTTAATCTAACTAGTGAAGGAAAGGTGAACTGGTTCCAATAC  
 TAAATCCAGATGTCATATTCAGTAAAAAGGAAAAGTCAGATGTGAAATTTGAAGATCGATTTGACAAA  
 TATCTTGATCCGTCCTTTTTTCAACATCGGATTCAATGGTTTTCAATTTTCAACTCCTTCATGATGGTGA  
 TCTTCTGGTGGCTTAGTTCAATGATTTAATGAGAACATTAAGAAAAGATTATGCTCGGTACAGTAA  
 AGAGGAAGAAATGGATGATATGGATAGAGACCTAGGAGATGAATATGGATGGAACAGGTGCATGGAGAT  
 GTATTTAGACCATCAAGTCAACCCACTGATATTTTCTCTCTGATTGGTCTGGATGTCAGATATTTGCTG  
 TGTCTCTCATCGTTATTATTGTTGCAATGATAGAAGATTTATATACTGAGAGGGGATCAATGCTCAGTAC  
 AGCCATATTTGTCTATGCTGCTACGTCTCCAGTGAATGGTTATTTGGAGGAAGTCTGTATGCTAGACAA  
 GGAGGAAGGAGATGGATAAAGCAGATGTTTATTGGGCGATTCTTATCCCAGCTATGGTGTGGCCTG  
 CCTTCTTCATCAATTTTCATAGCCATTTATTACCATGCTTCAAGAGCCATTCCTTTTGAACAATGGTGGC  
 CGTTTGTGCATCTGTTTTTTTTGTTATTCTTCTCTAACTCTTGGTACAATACTTGGCCGAAATCTG  
 TCAGGTACAGCCAACTTTCTTGTGCTGCAATGCTGTGCCTCGTCTATACCGAGAAAAAATGGTTCA  
 TGGAGCCTGCGGTTATTGTTGCTGGGTGGAATTTTACCTTTTGGTTCAATCTTTATTGAAATGTATTT  
 CATCTTACGCTTTTCTGGGCATATAAGATCTATTATGCTATGGCTTCATGATGCTGGTCTGTTATC  
 CTGTGCATTGTGACTGTCTGTGACTATTGTGTGCACATATTTTCTACTAAATGCAGAAGATTACCGGT  
 GGCAATGGACAAGTTTTCTCTGCTGCATCAACTGCAATCTATGTTTACATGATTTCTTTTACTACTA  
 TTTTTTCAAACAAGATGTATGGCTTATTTCAAACATCATTTTACTTTGGATATATGGCGTATTTAGC  
 ACAGCCTTGGGATAATGTGTGGAGCGATTGGTTACATGGGAACAAGTGCCTTTGTCCGAAAAATCTATA  
 CTAAATGTGAAAATTGAC

**ACGCGT**ACGCGGCCGCTCGAGCAGAAACTCATCTCAGAAGAGGATCTGGCAGCAAATGATATCCTGGATT  
 ACAAGGATGACGACGATAAGGTTTAA

**Protein Sequence:**

>RC223270 representing NM\_020123  
 Red=Cloning site Green=Tags(s)

MRPLPGALGVAAAAALWLLLLLPRTRADEHEHTYQDKEEVVLMNTVGPYHNRQETYKYFSLPFCVGSK  
 KSISHYHETLGEALQGVELEFSGLDIKFKDDVMPATYCEIDLKDKRDAFVYAIKNHYWYQMIIDDLPIW  
 GIVGEADENGEDYYLWYKLEIGFNGNRIVDVNLTSEGVKLVNPKIQMSYSVKWKSVDVKFEDRFDK  
 YLDPSSFQHRHWFIFNSFMMVIFLVGLVSMILMRTLKDYARYSKEEEMDDMDRDLGDEYGWKQVHGD  
 VFRPSSHPLIFSSLIGSGCQIFAVSLIIVIAMIEDLYTERGSMSTAIFFVYAATSPVNGYFGGSLYARQ  
 GGRRWIKQMFIGAFLIPAMVCGTAFFINFIAIYYHASRAIPFGTMVAVCCICFFVILPLNLVGTILGRNL  
 SGQPNFPCRVNAVPRPIPEKKWFMEPAVIVCLGGILPFGSIFIEMYFIFTSFWAYKIYYVYGFMMMLVVI  
 LCIVTVCTIVCTYFLLNAEDYRWQWTSFLSAASTAIYVYMYSFYFFKTKMYGLFQTSFYFGYMAVFS  
 TALGIMCGAIGYMGTSAFVRKIYTNVKID

**TR**TRPLEQKLISEEDLAANDILDYKDDDDKV

**Chromatograms:**

[https://cdn.origene.com/chromatograms/mk6105\\_c04.zip](https://cdn.origene.com/chromatograms/mk6105_c04.zip)

Restriction Sites: SgfI-MluI

Cloning Scheme:



ACCN: NM\_020123

ORF Size: 1767 bp

OTI Disclaimer: The molecular sequence of this clone aligns with the gene accession number as a point of reference only. However, individual transcript sequences of the same gene can differ through naturally occurring variations (e.g. polymorphisms), each with its own valid existence. This clone is substantially in agreement with the reference, but a complete review of all prevailing variants is recommended prior to use. [More info](#)

OTI Annotation: This clone was engineered to express the complete ORF with an expression tag. Expression varies depending on the nature of the gene.

Components: The ORF clone is ion-exchange column purified and shipped in a 2D barcoded Matrix tube containing 10ug of transfection-ready, dried plasmid DNA (reconstitute with 100 ul of water).

- Reconstitution Method:
1. Centrifuge at 5,000xg for 5min.
  2. Carefully open the tube and add 100ul of sterile water to dissolve the DNA.
  3. Close the tube and incubate for 10 minutes at room temperature.
  4. Briefly vortex the tube and then do a quick spin (less than 5000xg) to concentrate the liquid at the bottom.
  5. Store the suspended plasmid at -20°C. The DNA is stable for at least one year from date of shipping when stored at -20°C.

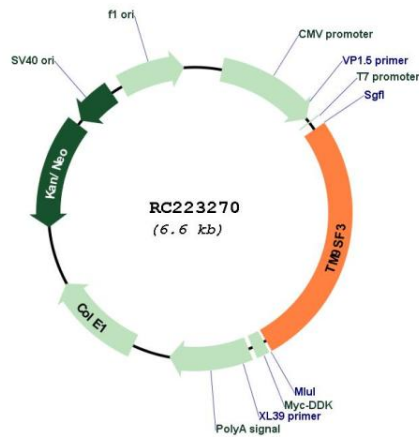
RefSeq: [NM\\_020123.4](#)

RefSeq Size: 3592 bp

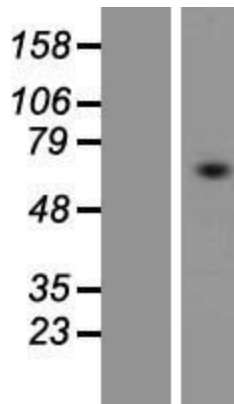
RefSeq ORF: 1770 bp

Locus ID: 56889

**UniProt ID:** [Q9HD45](#)  
**Cytogenetics:** 10q24.1  
**Domains:** EMP70  
**Protein Families:** Transmembrane  
**MW:** 67.7 kDa

**Product images:**


Circular map for RC223270



Western blot validation of overexpression lysate (Cat# [LY412663]) using anti-DDK antibody (Cat# [TA50011-100]). Left: Cell lysates from untransfected HEK293T cells; Right: Cell lysates from HEK293T cells transfected with RC223270 using transfection reagent MegaTran 2.0 (Cat# [TT210002]).