

Product datasheet for **RC223267**

PDLIM5 (NM_001011513) Human Tagged ORF Clone

Product data:

Product Type:	Expression Plasmids
Product Name:	PDLIM5 (NM_001011513) Human Tagged ORF Clone
Tag:	Myc-DDK
Symbol:	PDLIM5
Synonyms:	ENH; ENH1; L9; LIM
Mammalian Cell Selection:	Neomycin
Vector:	pCMV6-Entry (PS100001)
E. coli Selection:	Kanamycin (25 ug/mL)



[View online »](#)

ORF Nucleotide Sequence:

>RC223267 representing NM_001011513
 Red=Cloning site Blue=ORF Green=Tags(s)

TTTTGTAATACGACTCACTATAGGGCGGCCGGAATTCGTCGACTGGATCCGGTACCGAGGAGATCTGCC
 GCC**CGCATCGCC**

ATGAGCAACTACAGTGTGCTACTGGTTGGCCAGCTCCTTGGGGTTCCGGCTGCAGGGCGGTAAGGATT
 TCAACATGCCTCTGACAATCTCTAGTCTAAAAGATGGCGCAAGGCAGCCAGGCAAATGTAAAGATAGG
 CGATGTGGTTCTCAGCATTGATGGAATAAATGCACAAGGAATGACTCATCTTGAAGCCCAGAATAAGATT
 AAGGGTTGTACAGGCTCTTTGAATAGTCTGCAAAGAGCATCTGCTGCACCCAAGCCTGAGCCGGTTC
 CTGTTCAAAGGCCACAGTACCAGCGTGTGTTCCGAGACTTCTCAGGAGCTAGCAGAGGGACAGAGAAG
 AGGATCCCAGGGTGACAGTAAACAGCAAATGGCCACCAAGAAAACACATTGTGGAGCGCTATACAGAG
 TTTTATCATGTACCCACTCACAGTATGCCAGCAAGAAGAGACTGATTGAGGATACTGAAGACTGGCGTC
 CAAGGACTGGAACAACACTAGTCTCGCTCTTCCGAATCCTTGCCAGATCACTGGGACTGAACATTTGAA
 AGAATCTGAAGCCGATAATACAAAGAAGGCAAATAACTCTCAGGAGCCTTCTCCGAGTTGGCTTCTCG
 GTAGTTCACACGAGCATGCCGAGAGCCTGGACAGCCAACCTCTGGCAGACCAGGGGTTACAGCC
 TCACAACTGCAGCTGCCTTCAAGCCTGTAGGATCCACTGGCGTCATCAAGTACCAAGCTGGCAACGGCC
 AAACAAGGAGTACCTTCCACTGGAAGAATCTCAAACAGCGCTACTTACTCAGGATCAGTGGCACCAGCC
 AACTCAGCTTTGGGACAAACCCAGCCAAGTGACCAGGACACTTTAGTGCAAAGAGCTGAGCACATTTCCAG
 CAGGGAACGAACCTCCGATGTGCGCCATTGTAACCAGGTATCAGAGGACCATTTAGTGGCACTGGG
 GAAATCTTGGCACCCAGAAGAATTCAACTGCGCTCACTGCAAAAATACAATGGCCTACATTGGATTTGTA
 GAGGAGAAAGGAGCCCTGTATTGTGAGCTGTGCTATGAGAAATCTTTGCCCTGAATGGTTCGATGCC
 AAAGGAAGATCCTTGGAGAAGTATCAGTGCCTTGAACAAACTTGGCATGTTTCTGTGTTGCTGTGT
 AGCCTGTGGAAAGCCATTTCGGAACAATGTTTTTCACTTGGAGGATGGTGAACCCCTACTGTGAGACTGAT
 TATTATGCCCTCTTTGGTACTATATGCCATGGATGTGAATTTCCATAGAAGCTGGTGCATGTTCTCGG
 AAGCTCTGGGCTACACCTGGCATGACACTTGCTTTGTATGCTCAGTGTGTGTGAAAGTTTGAAGGTCA
 GACCTTTTTCTCAAGAAGGACAAGCCCTGTGAAGAAACATGCTCATTCTGTGAATTT

ACGCGTACGCGGCCGCTCGAGCAGAAACTCATCTCAGAAGAGGATCTGGCAGCAAATGATATCCTGGATT
 ACAAGGATGACGACGATAAGGTTTAA

Protein Sequence:

>RC223267 representing NM_001011513
 Red=Cloning site Green=Tags(s)

MSNYSVSLVGPAPWGFRLQGGKDFNMPLTISSLDGGKAAQANVRIGDVVLSIDGINAQGMTHLEAQNKI
 KGCTGSLNMTLQRASAAPKPEPVPVQKPTVTSVCSETSQLAEGQRRGSQGDQSKQNGPPRKHIVERYE
 FYHVPTHSDASKKRLIEDTEDWRPRTGTTQSRFRILAQITGTEHLKESEADNTKKANNSQEPSPQLASS
 VASTRSMPELSDSPTSGRPGVTSLTAAAFKPVGSGTGVIKSPSWQRPNQGVPTGRI SNSATYSGSVAPA
 NSALGQTQPSDQDTLVQRAEHIPAGKRTPMCAHCNQVIRGPFLVALGKSWHPPEFNCAHCKNTMAYIGFV
 EEKGALYCELCYEKFFAPECGRCQRKILGEVISALKQTWVSCFVVCACGKPIRNNVFLHLEDGEPYCETD
 YYALFGTICHGCEFPFIEAGDMFLEALGYTWHDTFCVSVCCESLEGQTFFSKDKPLCKKHAHSVNF

TRTRPLEQKLISEEDLAANDILDYKDDDDKV

Chromatograms:

https://cdn.origene.com/chromatograms/mk8065_a03.zip

Restriction Sites:

Sgfl-Mlul

Cloning Scheme:



ACCN: NM_001011513

ORF Size: 1461 bp

OTI Disclaimer: The molecular sequence of this clone aligns with the gene accession number as a point of reference only. However, individual transcript sequences of the same gene can differ through naturally occurring variations (e.g. polymorphisms), each with its own valid existence. This clone is substantially in agreement with the reference, but a complete review of all prevailing variants is recommended prior to use. [More info](#)

OTI Annotation: This clone was engineered to express the complete ORF with an expression tag. Expression varies depending on the nature of the gene.

Components: The ORF clone is ion-exchange column purified and shipped in a 2D barcoded Matrix tube containing 10ug of transfection-ready, dried plasmid DNA (reconstitute with 100 ul of water).

Reconstitution Method:

1. Centrifuge at 5,000xg for 5min.
2. Carefully open the tube and add 100ul of sterile water to dissolve the DNA.
3. Close the tube and incubate for 10 minutes at room temperature.
4. Briefly vortex the tube and then do a quick spin (less than 5000xg) to concentrate the liquid at the bottom.
5. Store the suspended plasmid at -20°C. The DNA is stable for at least one year from date of shipping when stored at -20°C.

RefSeq: [NM_001011513.3](#), [NP_001011513.3](#)

RefSeq Size: 5774 bp

RefSeq ORF: 1464 bp

Locus ID: 10611

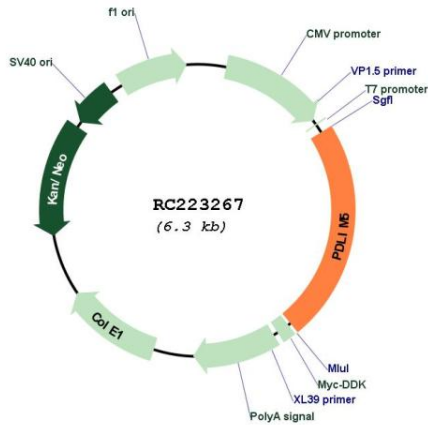
Cytogenetics: 4q22.3

Protein Families: Druggable Genome

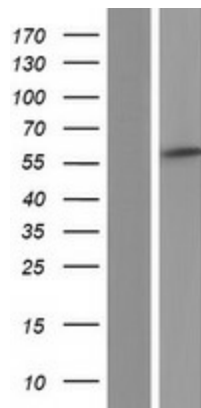
MW: 52.9 kDa

Gene Summary: This gene encodes a member of a family of proteins that possess a 100-amino acid PDZ domain at the N terminus and one to three LIM domains at the C-terminus. This family member functions as a scaffold protein that tethers protein kinases to the Z-disk in striated muscles. It is thought to function in cardiomyocyte expansion and in restraining postsynaptic growth of excitatory synapses. Alternative splicing of this gene results in multiple transcript variants. [provided by RefSeq, Jan 2012]

Product images:



Circular map for RC223267



Western blot validation of overexpression lysate (Cat# [LY423263]) using anti-DDK antibody (Cat# [TA50011-100]). Left: Cell lysates from untransfected HEK293T cells; Right: Cell lysates from HEK293T cells transfected with RC223267 using transfection reagent MegaTran 2.0 (Cat# [TT210002]).