

Product datasheet for **RC223258**

Matrin 3 (MATR3) (NM_018834) Human Tagged ORF Clone

Product data:

Product Type:	Expression Plasmids
Product Name:	Matrin 3 (MATR3) (NM_018834) Human Tagged ORF Clone
Tag:	Myc-DDK
Symbol:	Matrin 3
Synonyms:	ALS21; MPD2; VCPDM
Mammalian Cell Selection:	Neomycin
Vector:	pCMV6-Entry (PS100001)
E. coli Selection:	Kanamycin (25 ug/mL)



[View online »](#)

**ORF Nucleotide
Sequence:**

>RC223258 representing NM_018834
 Red=Cloning site Blue=ORF Green=Tags(s)

TTTTGTAATACGACTCACTATAGGGCGGCCGGGAATTCGTGACTGGATCCGGTACCGAGGAGATCTGCC
 GCC**CGGATCGCC**

ATGTCCAAGTCATTCCAGCAGTCATCTCTCAGTAGGGACTCACAGGGTCATGGGCGTGACCTGTCTGCGG
 CAGGAATAGGCCTTCTTGCTGCTGCTACCCAGTCTTTAAGTATGCCAGCATCTCTTGGAAGGATGAACCA
 GGGTACTGCACGCCTTGCTAGTTAATGAATCTTGGAATGAGTTCTTCATTGAATCAACAAGGAGCTCAT
 AGTGCAGTGTCTTCTGCTAGTACTTCTCCATAATTTGCAGTCTATATTTAACATTGGAAGTAGAGGTC
 CACTCCCTTTATCTTCTCAACACCGTGGAGATGCAGACCAGGCCAGTAACATTTTGGCCAGCTTTGGTCT
 GTCTGCTAGAGACTTAGATGAAGTGAAGTGTATCCAGAGGACAAGATTACTCCTGAGAATTTGCCCAA
 ATCCTTCTACAGCTTAAAAGGAGGAGAAGTGAAGAAGGCCCTACCTTGAGTTATGGTAGAGATGGCAGAT
 CTGCTACACGGGAGCCACCATACAGAGTACCTAGGGATGATTGGGAAGAAAAAGGCACTTTAGAAGAGA
 TAGTTTTGATGATCGTGGTCTAGTCTCAACCCAGTGTGATTATGACCATGGAAGTCGTTCTCAAGAA
 TCTGGTTATTATGACAGAATGGATTATGAAGATGACAGATTAAGAGATGGAGAAAGGTGTAGGGATGATT
 CTTTTTTGGTGAGACCTCGCATAACTATCATAAATTTGACAGTGAAGTATGAGAGAAATGGGACGTGGTCC
 TGGCCCTTACAAGAGAGATCTCTTTTGGAAAAAGAGAGGCGCTCTCCAAGTAGCAATATTGAAGAC
 TTCCATGGACTCTTACCGAAGGGTTATCCCATCTGTGCTCTATATGTGATTTGCCAGTTCATTCTAATA
 AGGAGTGGAGTCAACATATCAATGGAGCAAGTACAGTCGTGATGCCAGCTTCTTCTTGAATCTACCC
 AGAATGGAATCCTGACAATGATACAGGACACACAATGGGTGATCCATTCTGTTGCAGCAGTCTACAAAT
 CCAGCACCAGGAATCTGGGACCTCCACCTCCCTCATTTTCATCTTGGGGGACCAGCAGTTGGACCAAGAG
 GAAATCTGGGTGCTGAAATGGAACCTGCAAGGACCTAGACACATGCAGAAAGGCAGATGGAAACTAG
 CAGAGTTGTTACATCATGGATTTTCAACGAGGAAAAAAGTTGAGATACCAGCTATTACAGCTGGTAGAA
 CCATTTGGAGTCAATTTCAATCATCTGATTCTAAATAAAATTAATGAGGCATTTATTGAAATGGCAACCA
 CAGAGGATGCTCAGGCCGAGTGGATTATTACACAACCACACCAGCGTTAGTATTTGGCAAGCCAGTGAG
 AGTTCAATTTATCCAGAAGTATAAAAGAATAAAGAAACCTGAAGGAAAGCCAGATCAGAAGTTTGTCAA
 AAGCAAGAGCTTGGACGTGTGATACATCTCAGCAATTTGCCGCTTCTGGCTATTCTGATAGTGTGTTT
 TCAAGCTTGTGAGCCTTATGGGAAAAAAGAAATACATATTGATGAGGATGAAAAGTCAGGCTTTTAT
 TGAGATGGAGACAAGAGAAGATGCAATGGCAATGGTTGACCATTGTTGAAAAAAGCCCTTTGGTTTCAG
 GGGAGATGTGTGAAGTTGACCTGTCTGAGAAATATAAAAACTGTTCTGAGGATTCCAAACAGAGGCA
 TTGATTTACTGAAAAAGATAAATCCCGAAAAAGATCTTACTCTCCAGATGGCAAAGAATCTCCAAGTGA
 TAAGAAATCCAAAAGTATGGTTCCAGAAAGACTGAGAGTTCAACCGAAGGTAAGAAACAAGAGAGAAG
 TCCGGTGAAGATGGTGAGAAAGACAAAAGGATGACCAGACAGAGCAGGAACCTAATATGCTTCTTGAAT
 CTGAAGATGAGCTACTTGTAGATGAAGAAGAAGCAGCAGCACTGTAGAAAGTGGCAGTTCAGTGGGAGA
 CGAGACCGATCTTGCTAATTTAGGTGATGTGGCTTCTGATGGGAAAAAGGAACCATCAGATAAAGCTGTG
 AAAAAAGATGGAAGTCTTCAGCAGCAGCAAAGAAAAAGCTTAAAAAGGTGGACAAGATCGAGGAACTTG
 ATCAAGAAAACGAAGCAGCGTTGGAAAAAGAAATTAATAAAGTGAAGAAAACACAGAACCAGGTGCTGAATC
 TTCTGAGAACGCTGATGATCCCAACAAAGATACAAGTGAAGAACGCAGATGGTCAAAGTATGAGAACAAG
 GACGACTATACAATCCCAGATGAGTATAGAATTGGACCATATCAGCCCAATGTTCTCTGTTGATAGACT
 ATGTGATACCTAAAACAGGGTTTTACTGTAAAGCTGTGTTCACTCTTTTATACAAATGAAGAAGTTGCAAA
 GAATACTCATTGCAGCAGCCTTCTCATTATCAGAAATTAAGAAATTTCTGAATAAATTGGCAGAAGAA
 CGCAGACAGAAGAAGGAAACT

ACGCGTACGCGGCCGCTCGAGCAGAAACTCATCTCAGAAGAGGATCTGGCAGCAATGATATCCTGGATT
 ACAAGGATGACGACGATAAGGTTTAA

Protein Sequence: >RC223258 representing NM_018834
 Red=Cloning site Green=Tags(s)

```

MSKSFQQSSLSRDSQGHGRDL SAAGIGLLAAATQSL SMPASLGRMNQGTARLASLMNLGMSSSLNQQGAH
SALSSASTSSHNLQSI FNIGSRGPLPLSSQHGRDADQASNILASFGLSARDLDEL SRYPEDKITPENLPQ
ILLQLKRRRTEEGPTLSYGRDGRSATREPPYRVP RDDWEEKRHFRRDSFDDRGPSLNPVLDYDHGSRSQE
SGYYDRMDYEDRLRDGERCRD DSFFGETSHNYHKFDSEYERMGRGPGPLQERSLF EKRGAPPSSNIED
FHGLLPKGYPHLCSICDLPVHSNK EWSQHINGASHSRRCQLLEIYPEWNP DNDTGHMTGDPFMLQQSTN
PAPGILGPPPPS FHLG GPAVGPRGNL GAGNGLQGPRHMQKGRVETSRVVHIMDFQRGNLRYQLQLLVE
PFGVISNHLILNKINEAFIEMATTEDAQA AVDYTTTPALVFGKPV RVHLSQKYKR IKKPEGKPDQKFDQ
KQELGRVIHLSNLPHSGYSDSAVLKLAEPY GKIKNYILMRMKSQAFIEMETREDAMAMVDHCLKKALWFQ
GRCVKVDLSEKYKLVLRIPNRGIDL LKKDKSRKRSYSPDGKESPSDKKSKTDG SQKTESSTEGKEQEEK
SGEDGEKDTKDDQTEQEPNMLLESEDELLVDEEEAAALLES GSSVGD ETDLANLGDVASDGKKEPSDKAV
KKDGSASAAA KKKLKKVKDIEELDQENEAAL ENGIKNEENTEPGAESSENADDPNKDTS ENADGQSDENK
DDYTIPDEYRIGPYQPNVPV GIDYVIPKTGFYCKLCSLFYTNEEVAKNTHCSSLPHYQLKKKFLNKLAEE
RRQKKET
  
```

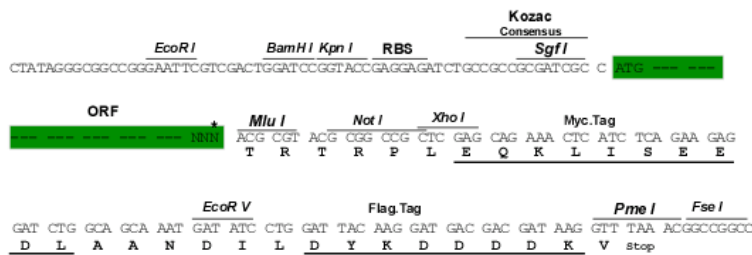
TRTRPLEQKLISEEDLAANDILDYKDDDDKV

Chromatograms: https://cdn.origene.com/chromatograms/mk6289_g03.zip

Restriction Sites: SgfI-MluI

Cloning Scheme:

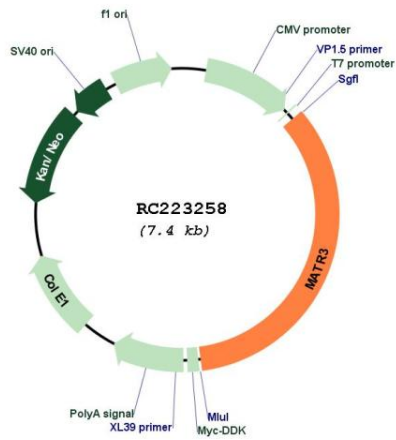
Cloning sites used for ORF Shuttling:



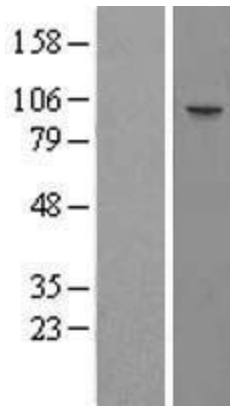
* The last codon before the Stop codon of the ORF

ACCN:	NM_018834
ORF Size:	2541 bp
OTI Disclaimer:	The molecular sequence of this clone aligns with the gene accession number as a point of reference only. However, individual transcript sequences of the same gene can differ through naturally occurring variations (e.g. polymorphisms), each with its own valid existence. This clone is substantially in agreement with the reference, but a complete review of all prevailing variants is recommended prior to use. More info
OTI Annotation:	This clone was engineered to express the complete ORF with an expression tag. Expression varies depending on the nature of the gene.
Components:	The ORF clone is ion-exchange column purified and shipped in a 2D barcoded Matrix tube containing 10ug of transfection-ready, dried plasmid DNA (reconstitute with 100 ul of water).
Reconstitution Method:	<ol style="list-style-type: none">1. Centrifuge at 5,000xg for 5min.2. Carefully open the tube and add 100ul of sterile water to dissolve the DNA.3. Close the tube and incubate for 10 minutes at room temperature.4. Briefly vortex the tube and then do a quick spin (less than 5000xg) to concentrate the liquid at the bottom.5. Store the suspended plasmid at -20°C. The DNA is stable for at least one year from date of shipping when stored at -20°C.
RefSeq:	NM_018834.6
RefSeq Size:	3921 bp
RefSeq ORF:	2544 bp
Locus ID:	9782
UniProt ID:	P43243
Cytogenetics:	5q31.2
Domains:	RRM, ZnF_U1
MW:	94.4 kDa
Gene Summary:	This gene encodes a nuclear matrix protein, which is proposed to stabilize certain messenger RNA species. Mutations of this gene are associated with distal myopathy 2, which often includes vocal cord and pharyngeal weakness. Alternatively spliced transcript variants, including read-through transcripts composed of the upstream small nucleolar RNA host gene 4 (non-protein coding) and matrin 3 gene sequence, have been identified. Pseudogenes of this gene are located on chromosomes 1 and X. [provided by RefSeq, Aug 2013]

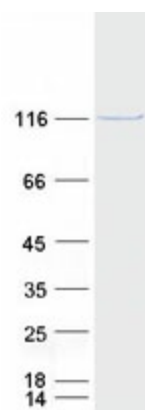
Product images:



Circular map for RC223258



Western blot validation of overexpression lysate (Cat# [LY412874]) using anti-DDK antibody (Cat# [TA50011-100]). Left: Cell lysates from untransfected HEK293T cells; Right: Cell lysates from HEK293T cells transfected with RC223258 using transfection reagent MegaTran 2.0 (Cat# [TT210002]).



Coomassie blue staining of purified MATR3 protein (Cat# [TP323258]). The protein was produced from HEK293T cells transfected with MATR3 cDNA clone (Cat# RC223258) using MegaTran 2.0 (Cat# [TT210002]).