

Product datasheet for **RC223248**

PDE4DIP (NM_022359) Human Tagged ORF Clone

Product data:

Product Type:	Expression Plasmids
Product Name:	PDE4DIP (NM_022359) Human Tagged ORF Clone
Tag:	Myc-DDK
Symbol:	PDE4DIP
Synonyms:	CMYA2; MMGL
Mammalian Cell Selection:	Neomycin
Vector:	pCMV6-Entry (PS100001)
E. coli Selection:	Kanamycin (25 ug/mL)
ORF Nucleotide Sequence:	>RC223248 representing NM_022359 Red=Cloning site Blue=ORF Green=Tags(s)

TTTTGTAATACGACTCACTATAGGGCGCCGGGAATTCGTCGACTGGATCCGGTACCGAGGAGATCTGCCGCC**CGCATCGCC**

ATGAAGGGCACAGACAGCGGGTCTGCTGCCGCCCGCATGCGACTTTGGCTGCTGCTGTCGCGCTCCC
GCCGGGCTCACTACACGCCTTACCGGTCCGGGGACGCGACGCGAACCCTCAGTCCCCACGGCAGACCCC
GAGCCGGGAAAGACGGCGCCCGGAGCCAGCCGGGAGCTGGGCAGCAGCGCCGAGGAGGAAGAAGCAGCT
GCGGCGGCCACACCCTGGATGAGAGATTATTTTCAGAGGATGATGGGGAGATGGTACCCAGAACGAGTC
ACACAGCAGCTTTTCTTAGTGACACTAAAGATCGAGGCCCTCCAGTGCAGTCACAGATCTGGAGAAGTGG
TGAAAAGGTCCCGTTTGTGCAGACATATTCCTTGAGAGCATTGAGAAACCCCTCAGGTACAGACCCAG
GCTCTTCGAGACTTTGAGAAGCACCTCAATGACCTGAAGAAGGAGAACTTCAGCCTCAAGCTGCGCATCT
ACTTCCTGGAGGAGCGCATGCAACAGAAGTATGAGGCCAGCCGGGAGGACATCTACAAGCGGAACATTGA
GCTGAAGGTTGAAGTGGAGAGCTTGAACGAGAAGTCCAGGACAAGAAACAGCATCTGGATAAAACATGG
GCTGATGTGGAGAATCTCAACAGTCAGAATGAAGCTGAGCTCCGACGCCAGTTTGAGGAGCGACAGCAGG
AGACGGAGCATGTTTATGAGCTCTTGGAGAATAAGATCCAGCTTCTGCAGGAGGAATCCAGGCTAGCAAA
GAATGAAGCTGCGCGGATGGCAGCTCTGGTGAAGCAGAGAAGGAGTGTAACTGGAGCTCTCAGAGAAA
CTGAAGGGAGTCACCAAAAAGTGGGAAGATGTACCAGGAGACCAGGTCAAGCCCGACCAATACACTGAGG
CCCTGGCCAGAGGGACAAG

ACGCGTACGCGGCCGCTCGAGCAGAAACTCATCTCAGAAGAGGATCTGGCAGCAAATGATATCCTGGATT
ACAAGGATGACGACGATAAGGTTTAA



[View online »](#)

Protein Sequence: >RC223248 representing NM_022359
Red=Cloning site Green=Tags(s)

MKGTDSGSCRRRCDFGCCCRASRRAYHTPYRSGDATRTPQSPRQTPSRERRRPEPAGSWAAAAEEEEAA
 AAATPWMRDYFAEDDGMVPRTSHTAAFLSDTKDRGPPVQSQIWRSGEKVPFVQTYSLRAFEKPPQVQTQ
 ALRDFEKHLNDLKKENFSLKLRIFYLEERMQQKYEASREDIYKRNIELKVEVESLKRELQDKKQHLDKTW
 ADVENLNSQNEAELRRQFEERQQETEHVYELLEENKIQLLQEE SRLAKNEAARMAALVEAEKECNLELSEK
 LKGVTKNWEDVPGDQVKPDQYTEALAQDK

TRTRPLEQKLISEEDLAANDILDYKDDDDKV

Chromatograms: https://cdn.origene.com/chromatograms/mk8051_a11.zip

Restriction Sites: SgfI-MluI

Cloning Scheme:



ACCN: NM_022359

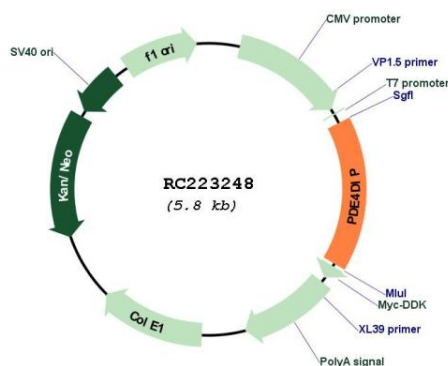
ORF Size: 930 bp

OTI Disclaimer: Due to the inherent nature of this plasmid, standard methods to replicate additional amounts of DNA in E. coli are highly likely to result in mutations and/or rearrangements. Therefore, OriGene does not guarantee the capability to replicate this plasmid DNA. Additional amounts of DNA can be purchased from OriGene with batch-specific, full-sequence verification at a reduced cost. Please contact our customer care team at custsupport@origene.com or by calling 301.340.3188 option 3 for pricing and delivery.

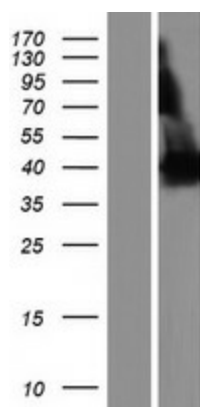
The molecular sequence of this clone aligns with the gene accession number as a point of reference only. However, individual transcript sequences of the same gene can differ through naturally occurring variations (e.g. polymorphisms), each with its own valid existence. This clone is substantially in agreement with the reference, but a complete review of all prevailing variants is recommended prior to use. [More info](#)

OTI Annotation:	This clone was engineered to express the complete ORF with an expression tag. Expression varies depending on the nature of the gene.
Components:	The ORF clone is ion-exchange column purified and shipped in a 2D barcoded Matrix tube containing 10ug of transfection-ready, dried plasmid DNA (reconstitute with 100 ul of water).
Reconstitution Method:	<ol style="list-style-type: none">1. Centrifuge at 5,000xg for 5min.2. Carefully open the tube and add 100ul of sterile water to dissolve the DNA.3. Close the tube and incubate for 10 minutes at room temperature.4. Briefly vortex the tube and then do a quick spin (less than 5000xg) to concentrate the liquid at the bottom.5. Store the suspended plasmid at -20°C. The DNA is stable for at least one year from date of shipping when stored at -20°C.
RefSeq:	NM_022359.7
RefSeq Size:	1531 bp
RefSeq ORF:	933 bp
Locus ID:	9659
UniProt ID:	Q5VU43
Cytogenetics:	1q21.2
MW:	35.9 kDa
Gene Summary:	The protein encoded by this gene serves to anchor phosphodiesterase 4D to the Golgi/centrosome region of the cell. Defects in this gene may be a cause of myeloproliferative disorder (MBD) associated with eosinophilia. Several transcript variants encoding different isoforms have been found for this gene. [provided by RefSeq, Aug 2010]

Product images:



Circular map for RC223248



Western blot validation of overexpression lysate (Cat# [LY411685]) using anti-DDK antibody (Cat# [TA50011-100]). Left: Cell lysates from untransfected HEK293T cells; Right: Cell lysates from HEK293T cells transfected with RC223248 using transfection reagent MegaTran 2.0 (Cat# [TT210002]).