

## Product datasheet for **RC223242**

### **PPEF1 (NM\_152226) Human Tagged ORF Clone**

#### **Product data:**

Product Type:	Expression Plasmids
Product Name:	PPEF1 (NM_152226) Human Tagged ORF Clone
Tag:	Myc-DDK
Symbol:	PPEF1
Synonyms:	PP7; PPEF; PPP7C; PPP7CA
Mammalian Cell Selection:	Neomycin
Vector:	pCMV6-Entry (PS100001)
E. coli Selection:	Kanamycin (25 ug/mL)



[View online »](#)

**ORF Nucleotide Sequence:**

>RC223242 representing NM\_152226  
 Red=Cloning site Blue=ORF Green=Tags(s)

TTTTGTAATACGACTCACTATAGGGCGGCCGGAATTCGTCGACTGGATCCGGTACCGAGGAGATCTGCC  
 GCC**CGGATCGCC**

ATGGGATGCAGCAGTTCTTCAACGAAAACCAGGAGATCTGACACATCACTGAGAGCTGCGTTGATCATCC  
 AGAACTGGTACCGAGGTTACAAAGCTCGACTGAAGGCCAGACAACACTATGCCCTCACCATCTTCCAGTC  
 CATCGAATATGCTGATGAACAAGGCCAAATGCAGTTATCCACCTTCTTTTCTTTCATGTTGGAAAACAC  
 ACACATATACATAAGGAAGAGCTAGAATTAAGAAATCAGTCTCTTGAAGCGAACAGGACATGAGGGATA  
 GATGGGATTATGTGGACTCGATAGATGTCCAGACTCCTATAATGGTCTCGGCTACAATTTCTCTCAC  
 TTGTACGGATATTGATTTACTTCTTGGGCCTTCAAGGAACAACAGATACTTCATGCCATTATGTCTTA  
 GAGGTGCTATTTGAAACCAAGAAAGTCTGAAGCAAATGCCGAATTTCACTCACATACAACTTCTCCCT  
 CCAAAGAGGTAACAATCTGTGGTATTTGCATGGGAACTGGATGATCTTTTTTGGATCTTCTACAAGAA  
 TGGTCTCCCTCAGAGAGGAACCGTATGTTTTAATGGTGACTTTGTAGATCGAGGAAAGAATTCATA  
 GAGATCCTAATGATCCTGTGTGTGAGTTTTCTGTCTACCCCAATGACCTGCACTTGAACAGAGGGAACC  
 ACGAAGATTTTATGATGAATCTGAGGTATGGCTTACGAAAGAAATTTTGCATAAATAAGCTACATGG  
 AAAAGAATCTTACAAATCTTGAAGAATTCTATGCCTGGCTCCCAATCGGTACAATCGTTGACAATGAA  
 ATCCTGGTCATCCATGGTGGGATATCAGAGACCACAGACTTGAATTTACTCCACCGTGTAGAGAGGAACA  
 AGATGAAATCTGTGCTGATACCACCAACGGAAACAAACAGAGACCATGACTGACTCGAAGCACAATAA  
 AGTAGGTGTGACTTTTAAATGCACATGGAAGAATCAAAACAATGGATCTCCTACTGAACACTAACAGAG  
 CATGAATGGGAACAGGTGGTACTATATTTCTGCTTCTAATTATTATGAAGAAGGCAGCAATCGAGGAG  
 CTTACATCAAATATGTTCTGGTACAACCTCGATTTTTCCAGTACCAAGTAACATAAGCAACCGTCTT  
 TCAGCCTCTTCGCAAGAGTGGATACTATGGAACAGCGCCATCAAGATATTAAGAGAGAGAGTGAAT  
 TCACGAAAAAGTGACCTTACTCGTCTTCCAACCTCAAGACCACAGAAAATCAGGAAAACCTTCTGTGA  
 GCCAGTGGGCTTTTTGCATGGAGAACATTTTGGGGCTGAACTTACCATGGAGATCCCTCAGTTTCCGATCT  
 GGTAAACATAGACCAAAATGAAACGTTGAATACATGTCCAGCTTCCAGAATATCCGCATTGAAAAACCT  
 GTACAAGAGGCTCATTCTACTCTAGTTGAACTCTGTACAGATACAGATCTGACCTGGAAATCATATTTA  
 ATGCCATTGACTGATCACTCAGGCTGATCTCCGTGGAAGAATTTCTGCCATGTGGAACTTTTTAG  
 TTCTCACTACAATGTTACATTGATGATCCCAAGTCAATAAGCTTGCCAACATAATGGACTTGAACAAA  
 GATGGAAGCATTGACTTTAATGAGTTTTAAAGGCTTTCTATGTAGTGCATAGATATGAAGACTTGATGA  
 AACCTGATGTACCAACCTTGGC

**ACGCGT**ACGCGGCCGCTCGAGCAGAAACTCATCTCAGAAGAGGATCTGGCAGCAAATGATATCCTGGATT  
 ACAAGGATGACGACGATAAGGTTTAA

**Protein Sequence:**

>RC223242 representing NM\_152226  
 Red=Cloning site Green=Tags(s)

MGCSSTTKTRRSDSLRAALI IQNWYRGYKARLKARQHLYALTFQSI EYADEQQMQLSTFFSFMLENY  
 THIHKEELELRNQSLSEQDMRDRWDYVDSIDVPDSYNGPRLQFPLTCTDIDLLEAFKEQQILHAHYVL  
 EVLFETKKVLKQMPNFTHIQTPSKEVTICGDLHGKLDLFLIFYKNGLPSEPNPVFNGDFVDRGKNSI  
 EILMILCVSFLVYPNDLHLNRGNHEDFMMNLRYGFTKEILHXYKLHGKRILQILEEFYAWLP IGTIVDNE  
 ILVIHGGISETDLNLLHRVERNKMKSVLIPPETNRDHD TDSKHNKVGVTFNAHGRIKNGSPTEHLTE  
 HEWEQVVTIF SASNYEEGSRGAYIKLCSGTTPRFFQYQVTKATCFQPLRQRVDTMENSAIKILRERVI  
 SRKSDLTRAFQLQDHRKSGKLSVQWAFCMENILGLNLPWRSLSSNLVNI DQNGNVEYMSFQNI RIEKP  
 VQEAHSTLVETLYRYSLEIIFNAIDTDHSLISVEEFRAMWKL FSSHYNVHIDDSQVNKL ANIMDLNK  
 DGSIDFNEFLKAFYVVRHREDLMKPDVTNLG

**TRTRPLEQKLI SEEDLAANDILDYKDDDDKV**

**Chromatograms:**

[https://cdn.origene.com/chromatograms/mk8068\\_g08.zip](https://cdn.origene.com/chromatograms/mk8068_g08.zip)

Restriction Sites: SgfI-MluI

Cloning Scheme:



ACCN: NM\_152226

ORF Size: 1773 bp

OTI Disclaimer: The molecular sequence of this clone aligns with the gene accession number as a point of reference only. However, individual transcript sequences of the same gene can differ through naturally occurring variations (e.g. polymorphisms), each with its own valid existence. This clone is substantially in agreement with the reference, but a complete review of all prevailing variants is recommended prior to use. [More info](#)

OTI Annotation: This clone was engineered to express the complete ORF with an expression tag. Expression varies depending on the nature of the gene.

Components: The ORF clone is ion-exchange column purified and shipped in a 2D barcoded Matrix tube containing 10ug of transfection-ready, dried plasmid DNA (reconstitute with 100 ul of water).

Reconstitution Method:

1. Centrifuge at 5,000xg for 5min.
2. Carefully open the tube and add 100ul of sterile water to dissolve the DNA.
3. Close the tube and incubate for 10 minutes at room temperature.
4. Briefly vortex the tube and then do a quick spin (less than 5000xg) to concentrate the liquid at the bottom.
5. Store the suspended plasmid at -20°C. The DNA is stable for at least one year from date of shipping when stored at -20°C.

RefSeq: [NM\\_152226.1](#), [NP\\_689412.1](#)

RefSeq Size: 2687 bp

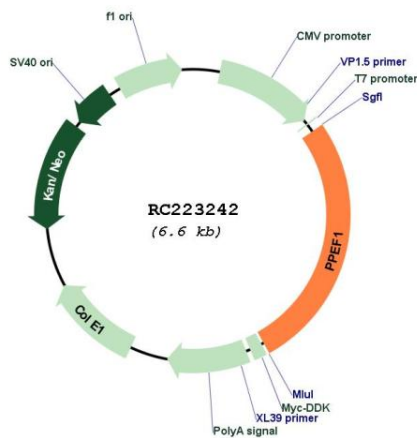
RefSeq ORF: 1776 bp

Locus ID: 5475

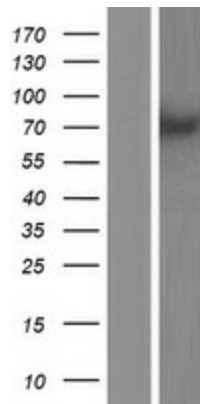
UniProt ID: [O14829](#)  
 Cytogenetics: Xp22.13  
 Domains: IQ, EFh, Metallophos  
 Protein Families: Druggable Genome, Phosphatase  
 MW: 68.6 kDa

**Gene Summary:** This gene encodes a member of the serine/threonine protein phosphatase with EF-hand motif family. The protein contains a protein phosphatase catalytic domain, and at least two EF-hand calcium-binding motifs in its C terminus. Although its substrate(s) is unknown, the encoded protein has been suggested to play a role in specific sensory neuron function and/or development. This gene shares high sequence similarity with the Drosophila retinal degeneration C (rdgC) gene. Several alternatively spliced transcript variants, each encoding a distinct isoform, have been described. [provided by RefSeq, Jul 2008]

**Product images:**



Circular map for RC223242



Western blot validation of overexpression lysate (Cat# [LY407704]) using anti-DDK antibody (Cat# [TA50011-100]). Left: Cell lysates from untransfected HEK293T cells; Right: Cell lysates from HEK293T cells transfected with RC223242 using transfection reagent MegaTran 2.0 (Cat# [TT210002]).