

## Product datasheet for **RC223217**

### **BOULE (BOLL) (NM\_197970) Human Tagged ORF Clone**

#### Product data:

**Product Type:** Expression Plasmids  
**Product Name:** BOULE (BOLL) (NM\_197970) Human Tagged ORF Clone  
**Tag:** Myc-DDK  
**Symbol:** BOULE  
**Synonyms:** BOULE  
**Mammalian Cell Selection:** Neomycin  
**Vector:** pCMV6-Entry (PS100001)  
**E. coli Selection:** Kanamycin (25 ug/mL)  
**ORF Nucleotide Sequence:** >RC223217 representing NM\_197970  
**Red=Cloning site Blue=ORF Green=Tags(s)**

TTTTGTAATACGACTCACTATAGGGCGCCGGGAATTCGTCGACTGGATCCGGTACCGAGGAGATCTGCC  
GCC**CGCATCGCC**

ATGGAACCGAGTCCGGGCCGAAACATCAAACCAGATGCAAACAGATTCATTATCTCCATCCCCTAATC  
CTGTGTCACCTGTGCCTTTGAATAACCCAACAAGTCCCCAAGATATGGAACAGTGATCCCTAATCGCAT  
CTTTGTAGGAGGAATTGATTTTAAAGACAAACGAAAGTGATTTAAGAAAATTTTTTCCAGTATGGGTCT  
GTGAAAGAAGTGAAGATTGTAATGACAGAGCTGGAGTATCAAAGGGTATGGTTTCGTCACCTTTTGAAA  
CACAAGAAGATGCACAAAAATTTTACAAGAGGCTGAAAACTTAATTATAAGGATAAGAAGCTGAACAT  
TGGTCCAGCAATAAGAAAACAACAAGTAGGGATCCCTCGTTCTAGTATAATGCCAGCAGCTGGAACAATG  
TATCTAACAACTTCAACTGGATATCCTTACTTACCATAATGGTGTGCTTATTTTCACTCCAGAGG  
TAACCTCGGTCCCACCGCCTTGGCCTTACGTTCTGTATGTAGCTCCCCTGTGATGGTAGCTCAGCCAT  
TTATCAGCAACCTGCATATCACTACCAGGCCACCACAGTATTTACCAGGACAGTGGCAGTGGAGTGTT  
CCTCAGCCTTCTGCCTTCTGTCTCATTCTTATACCTGCAACCTTCTGAGGTTATTTATCAACCAAGTGG  
AAATTGCACAGGATGGTGGATGTGTTCCCTCCACTGTCTCTGATGGAACTTCAGTCCAGAGCCTTA  
TTCTGATCATGGAGTTCAAGCAACATATCACCAGGTTTATGCTCCAAGTGCCATCACTATGCCTGCGCCT  
GTGATGCAGCCTGAGCCAATTAACAGTGTGGAGCATTATTAT

**ACGCGT**ACGCGGCCGCTCGAGCAGAACTCATCTCAGAAGAGGATCTGGCAGCAAATGATATCCTGGATT  
ACAAGGATGACGACGATAAGGTTTAA



[View online »](#)

**Protein Sequence:** >RC223217 representing NM\_197970  
Red=Cloning site Green=Tags(s)

METESGPQTSNQMQTDSLSPSPNPVSPVPLNNPTSAPRYGTVIPNRI FVGGIDFKTNESDLRKFSSQYGS  
 VKEVKIVNDRAGVSKGYGFVTFETQEDAQKILQEAELNYKDKKLNIGPAIRKQQVGI PRSSIMPAAGTM  
 YLTTSTGYPTYHNGVAYFHHTPEVTSVPPPWPSSRVSSPVMVAQPIYQQPAYHYQATTQYLPGQWQWSV  
 PQPSASSAPFLYLQPSEVIYQPVEIAQDGGCVPPPLSLMETS VPEPYSDHGVQATYHQVYAPSAITMPAP  
 VMQPEPIKTVWSIHY

TRTRPLEQKLISEEDLAANDILDYKDDDDKV

**Chromatograms:** [https://cdn.origene.com/chromatograms/mg3816\\_c09.zip](https://cdn.origene.com/chromatograms/mg3816_c09.zip)

**Restriction Sites:** SgfI-MluI

**Cloning Scheme:**



**ACCN:** NM\_197970

**ORF Size:** 885 bp

**OTI Disclaimer:** The molecular sequence of this clone aligns with the gene accession number as a point of reference only. However, individual transcript sequences of the same gene can differ through naturally occurring variations (e.g. polymorphisms), each with its own valid existence. This clone is substantially in agreement with the reference, but a complete review of all prevailing variants is recommended prior to use. [More info](#)

**OTI Annotation:** This clone was engineered to express the complete ORF with an expression tag. Expression varies depending on the nature of the gene.

**Components:** The ORF clone is ion-exchange column purified and shipped in a 2D barcoded Matrix tube containing 10ug of transfection-ready, dried plasmid DNA (reconstitute with 100 ul of water).

**Reconstitution Method:**

1. Centrifuge at 5,000xg for 5min.
2. Carefully open the tube and add 100ul of sterile water to dissolve the DNA.
3. Close the tube and incubate for 10 minutes at room temperature.
4. Briefly vortex the tube and then do a quick spin (less than 5000xg) to concentrate the liquid at the bottom.
5. Store the suspended plasmid at -20°C. The DNA is stable for at least one year from date of shipping when stored at -20°C.

**Note:** Plasmids are not sterile. For experiments where strict sterility is required, filtration with 0.22um filter is required.

**RefSeq:** [NM\\_197970.3](#)

**RefSeq Size:** 2804 bp

**RefSeq ORF:** 888 bp

**Locus ID:** 66037

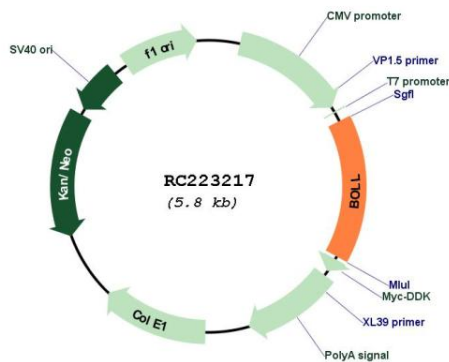
**UniProt ID:** [Q8N9W6](#)

**Cytogenetics:** 2q33.1

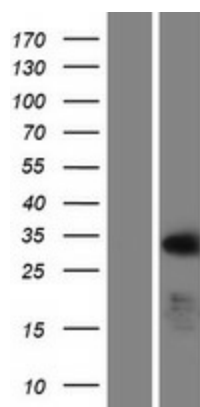
**MW:** 32.4 kDa

**Gene Summary:** This gene belongs to the DAZ gene family required for germ cell development. It encodes an RNA-binding protein which is more similar to Drosophila Boule than to human proteins encoded by genes DAZ (deleted in azoospermia) or DAZL (deleted in azoospermia-like). Loss of this gene function results in the absence of sperm in semen (azoospermia). Histological studies demonstrated that the primary defect is at the meiotic G2/M transition. Two alternatively spliced transcript variants encoding distinct isoforms have been found for this gene. [provided by RefSeq, Jul 2008]

### Product images:



Circular map for RC223217



Western blot validation of overexpression lysate (Cat# [LY405094]) using anti-DDK antibody (Cat# [TA50011-100]). Left: Cell lysates from untransfected HEK293T cells; Right: Cell lysates from HEK293T cells transfected with RC223217 using transfection reagent MegaTran 2.0 (Cat# [TT210002]).