

Product datasheet for RC223213

Orosomuroid 2 (ORM2) (NM_000608) Human Tagged ORF Clone

Product data:

Product Type: Expression Plasmids
Product Name: Orosomuroid 2 (ORM2) (NM_000608) Human Tagged ORF Clone
Tag: Myc-DDK
Symbol: Orosomuroid 2
Synonyms: AGP-B; AGP-B'; AGP2
Mammalian Cell Selection: Neomycin
Vector: pCMV6-Entry (PS100001)
E. coli Selection: Kanamycin (25 ug/mL)
ORF Nucleotide Sequence: >RC223213 ORF sequence
Red=Cloning site Blue=ORF Green=Tags(s)

TTTTGTAATACGACTCACTATAGGGCGCCGGGAATTCGTCGACTGGATCCGGTACCGAGGAGATCTGCC
GCC**CGATCGCC**

ATGGCGCTGTCTGGTTCTTACAGTCCTGAGCCTCTACCTCTGCTGGAAGCCAGATCCCATTGTGTG
CCAACCTAGTACCGGTGCCCATCAACAACGCCACCCTGGACCGGATCACTGGCAAGTGGTTTTATATCGC
ATCGGCTTTTCAAACGAGGAGTACAATAAGTCGGTTCAGGAGATCCAAGCAACCTTCTTTTACTTTACC
CCCAACAAGACAGAGGACAGATCTTTCTCAGAGAGTACCAGACCCGCCAGAACCAGTGTCTTATAACT
CCAGTTACCTGAATGTCCAGCGGAGAATGGGACCGTCTCCAGATACGAGGGAGCCGAGAACATGTTGC
TCACCTGCTGTTCTTAGGGACACCAAGACCTTGATGTTTGGTTCTACCTGGACGATGAGAAGAACTGG
GGGCTGTCTTTCTATGCTGACAAGCCAGAGACGACCAAGGAGCAACTGGGAGAGTTCTACGAAGCTCTCG
ACTGCTTGTGATTCCCAGGTGAGATGTCATGTACACCGACTGGAAAAGGATAAGTGTGAGCCACTGGA
GAAGCAGCACGAGAAGGAGAGGAAACAGGAGGAGGGGGAATCC

ACGCGTACGCGGCCGCTCGAGCAGAACTCATCTCAGAAGAGGATCTGGCAGCAATGATATCCTGGATT
ACAAGGATGACGACGATAAGGTTTAA

Protein Sequence: >RC223213 protein sequence
Red=Cloning site Green=Tags(s)

MALSWLTVLSLLPLLEAQIPLCANLVPVITNATLDRITGKWFYIASAFRNEEYKNSVQEIQATFFYFT
PNKTEDTIFLREYQTRQNQCFYNSSYLNQRENGTVSRYEGGREHVAHLLFLRDTKTLMFGSYLDDEKNW
GLSFYADKPETTKEQLGEFYALDCLCIPRSDVMYTDWKKDKCEPLEKQHEKERKQEEGES

TRTRPLEQKLISEEDLAANDILDYKDDDDKV



[View online »](#)

Chromatograms: https://cdn.origene.com/chromatograms/mk6453_f07.zip

Restriction Sites: SgfI-MluI

Cloning Scheme:



ACCN: NM_000608

ORF Size: 603 bp

OTI Disclaimer: The molecular sequence of this clone aligns with the gene accession number as a point of reference only. However, individual transcript sequences of the same gene can differ through naturally occurring variations (e.g. polymorphisms), each with its own valid existence. This clone is substantially in agreement with the reference, but a complete review of all prevailing variants is recommended prior to use. [More info](#)

OTI Annotation: This clone was engineered to express the complete ORF with an expression tag. Expression varies depending on the nature of the gene.

Components: The ORF clone is ion-exchange column purified and shipped in a 2D barcoded Matrix tube containing 10ug of transfection-ready, dried plasmid DNA (reconstitute with 100 ul of water).

Reconstitution Method:

1. Centrifuge at 5,000xg for 5min.
2. Carefully open the tube and add 100ul of sterile water to dissolve the DNA.
3. Close the tube and incubate for 10 minutes at room temperature.
4. Briefly vortex the tube and then do a quick spin (less than 5000xg) to concentrate the liquid at the bottom.
5. Store the suspended plasmid at -20°C. The DNA is stable for at least one year from date of shipping when stored at -20°C.

RefSeq: [NM_000608.4](#)

RefSeq Size: 844 bp

RefSeq ORF: 606 bp

Locus ID: 5005

UniProt ID: [P19652](#)

Cytogenetics: 9q32

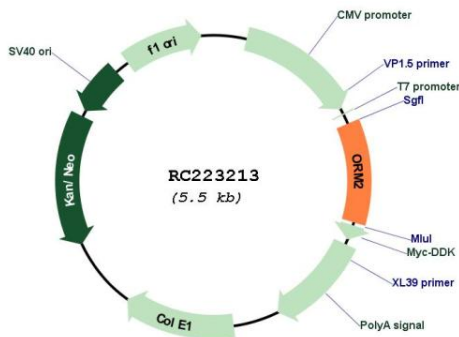
Domains: lipocalin

Protein Families: Secreted Protein

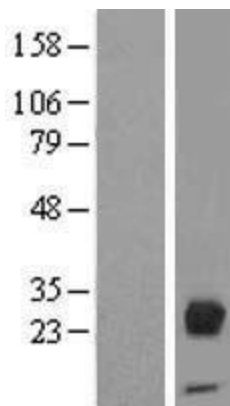
MW: 23.6 kDa

Gene Summary: This gene encodes a key acute phase plasma protein. Because of its increase due to acute inflammation, this protein is classified as an acute-phase reactant. The specific function of this protein has not yet been determined; however, it may be involved in aspects of immunosuppression. [provided by RefSeq, Jul 2008]

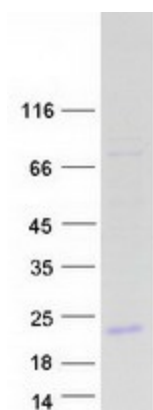
Product images:



Circular map for RC223213



Western blot validation of overexpression lysate (Cat# [LY424609]) using anti-DDK antibody (Cat# [TA50011-100]). Left: Cell lysates from untransfected HEK293T cells; Right: Cell lysates from HEK293T cells transfected with RC223213 using transfection reagent MegaTran 2.0 (Cat# [TT210002]).



Coomassie blue staining of purified ORM2 protein (Cat# [TP323213]). The protein was produced from HEK293T cells transfected with ORM2 cDNA clone (Cat# RC223213) using MegaTran 2.0 (Cat# [TT210002]).