

Product datasheet for RC223183

RFP2 (TRIM13) (NM_005798) Human Tagged ORF Clone

Product data:

Product Type:	Expression Plasmids
Product Name:	RFP2 (TRIM13) (NM_005798) Human Tagged ORF Clone
Tag:	Myc-DDK
Symbol:	RFP2
Synonyms:	CAR; DLEU5; LEU5; RFP2; RNF77
Mammalian Cell Selection:	Neomycin
Vector:	pCMV6-Entry (PS100001)
E. coli Selection:	Kanamycin (25 ug/mL)
ORF Nucleotide Sequence:	>RC223183 ORF sequence Red=Cloning site Blue=ORF Green=Tags(s)

TTTTGTAATACGACTCACTATAGGGCGCCGGGAATTCGTCGACTGGATCCGGTACCGAGGAGATCTGCC
GCC**CGATCGCC**

ATGGAGCTGCTTGAAGAAGATCTCACATGCCCTATTTGTTGTAGTCTGTTTGATGATCCACGGTTTTGC
CTTGCTCCACAACCTTCTGCAAAAAATGCTTAGAAGGTATCTTAGAAGGGAGTGTGCGGAATTCCTGTG
GAGACCAGCTCCATTCAAGTGCCTACATGCCGTAAGGAACTTCAGCTACTGGAATTAATAGCCTGCAG
GTTAATTACTCCCTGAAGGGTATTGTGGAAAAGTATAACAAGATCAAGATCTCTCCAAAATGCCAGTAT
GCAAAGGACACTTGGGGCAGCCTCTCAACATTTCTGCCTGACTGATATGCAGCTGATTTGTGGGATCTG
TGCTACTCGTGGGAGCACACCAAACATGTCTTCTGTTCTATTGAAGATGCCTATGCTCAGGAAAGGGAT
GCCTTTGAGTCCCTCTCCAGAGCTTTGAGACCTGGCGTCGGGGAGATGCTCTTTCTCGCTTGATACCT
TGGAACTAGTAAGAGGAAATCCCTACAGTTACTGACTAAAGATTGAGATAAAGTGAAGGAATTTTTTGA
GAAGTTACAACACACACTGGATCAAAAGAAGAATGAAATCTGTCTGACTTTGAGACCATGAAACTTGCT
GTTATGCAAGCATATGACCCAGAGATCAACAACTCAACACCATCTTGCAGGAGCAACGGATGGCCTTTA
ACATTGCTGAGGCTTTCAAAGATGTGTGAGAACCATTGTATTTCTGCAACAGATGCAGGAGTTAGAGA
GAAAATCAAAGTAATCAAGGAACTCCTTACCTCCCTCTAATTTGCCTGCAAGCCCTTTAATGAAGAAC
TTTGATACCAGTCAGTGGGAAGACATAAACTAGTCGATGTGGATAAACTTTCTTGGCCTCAAGACACTG
GCACATTCATTAGCAAGATTCCTGGAGCTTTATAAGTTATTTTGTCTAATCCTTCTGCTTGGCCTTGT
CATTGTCTTTGGTCTACCATGTTCTAGAAATGGTCATTATTTGATGACCTGGCAACTTGAAAAGGCTGT
CTTTCAAACCTCAGTTCCCTATCTGACTAAAACAGCCGATTTTCATAGAACAATCAGTTTTTTACTGGGAAC
AGGTGACAGATGGGTTTTTCATTTTCAATGAAAGATTCAAGAATTTTACTTTGGTGGTACTGAACAATGT
GGCAGAATTTGTGTGCAAAATAAACTATTA

ACGCGTACGCGGCCGCTCGAGCAGAACTCATCTCAGAAGAGGATCTGGCAGCAAATGATATCCTGGATT
ACAAGGATGACGACGATAAGGTTTAA



[View online »](#)

Protein Sequence: >RC223183 protein sequence
Red=Cloning site Green=Tags(s)

MELLEEDLTCPICCSLFDDPRVLPCHNFCKKCLEGILEGSVRNSLWRPAPFKCPTCRKETSATGINSLQ
 VNYSLKGIVEKYNKIKISPKMPVCKGHLGQPLNIFCLTDMQLICGICATRGEHTKHVFCSEDAYAQERD
 AFESLFQSFETWRRGDALSRLDTLETSKRKSLLQLLTKSDKVKKEFFEKLQHTLDQKNEILSDFETMKLA
 VMQAYDPEINKLNTILQEQRMAFNIAEAFKDVSEPIVFLQMQEFREKIKVIKETPLPPSNLPASPLMKN
 FDTSQWEDIKLVVDKLSLPQDTGTFISKIPWSFYKLFLLILLGLVIVFGPTMFLEWSLFDDLATWKGK
 LSNFSSYLTKTADFIEQSVFYWEQVTDGFFIFNERFKNFTLVVLLNNAEFVCKYKLL

TRTRPLEQKLISEEDLAANDILDYKDDDDKV

Chromatograms: https://cdn.origene.com/chromatograms/mk6407_f12.zip

Restriction Sites: SgfI-MluI

Cloning Scheme:



* The last codon before the Stop codon of the ORF

ACCN: NM_005798

ORF Size: 1221 bp

OTI Disclaimer: The molecular sequence of this clone aligns with the gene accession number as a point of reference only. However, individual transcript sequences of the same gene can differ through naturally occurring variations (e.g. polymorphisms), each with its own valid existence. This clone is substantially in agreement with the reference, but a complete review of all prevailing variants is recommended prior to use. [More info](#)

OTI Annotation: This clone was engineered to express the complete ORF with an expression tag. Expression varies depending on the nature of the gene.

Components: The ORF clone is ion-exchange column purified and shipped in a 2D barcoded Matrix tube containing 10ug of transfection-ready, dried plasmid DNA (reconstitute with 100 ul of water).

Reconstitution Method:

1. Centrifuge at 5,000xg for 5min.
2. Carefully open the tube and add 100ul of sterile water to dissolve the DNA.
3. Close the tube and incubate for 10 minutes at room temperature.
4. Briefly vortex the tube and then do a quick spin (less than 5000xg) to concentrate the liquid at the bottom.
5. Store the suspended plasmid at -20°C. The DNA is stable for at least one year from date of shipping when stored at -20°C.

RefSeq: [NM_005798.5](#)

RefSeq Size: 6776 bp

RefSeq ORF: 1224 bp

Locus ID: 10206

UniProt ID: [O60858](#)

Cytogenetics: 13q14.2

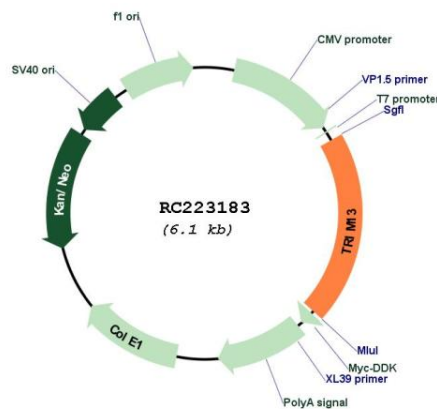
Domains: zf-B_box, RING

Protein Families: Transmembrane

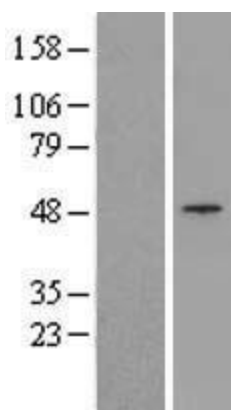
MW: 47 kDa

Gene Summary: This gene encodes a member of the tripartite motif (TRIM) family. The TRIM motif includes three zinc-binding domains, a RING, a B-box type 1 and a B-box type 2, and a coiled-coil region. This gene is located on chromosome 13 within the minimal deletion region for B-cell chronic lymphocytic leukemia. Multiple alternatively spliced transcript variants have been found for this gene. [provided by RefSeq, Jul 2008]

Product images:



Circular map for RC223183



Western blot validation of overexpression lysate (Cat# [LY417084]) using anti-DDK antibody (Cat# [TA50011-100]). Left: Cell lysates from untransfected HEK293T cells; Right: Cell lysates from HEK293T cells transfected with RC223183 using transfection reagent MegaTran 2.0 (Cat# [TT210002]).