

Product datasheet for **RC223172**

ETL (ADGRL4) (NM_022159) Human Tagged ORF Clone

Product data:

Product Type:	Expression Plasmids
Product Name:	ETL (ADGRL4) (NM_022159) Human Tagged ORF Clone
Tag:	Myc-DDK
Symbol:	ETL
Synonyms:	ELTD1; ETL; KPG_003
Mammalian Cell Selection:	Neomycin
Vector:	pCMV6-Entry (PS100001)
E. coli Selection:	Kanamycin (25 ug/mL)



[View online »](#)

ORF Nucleotide
Sequence:

>RC223172 representing NM_022159
Red=Cloning site Blue=ORF Green=Tags(s)

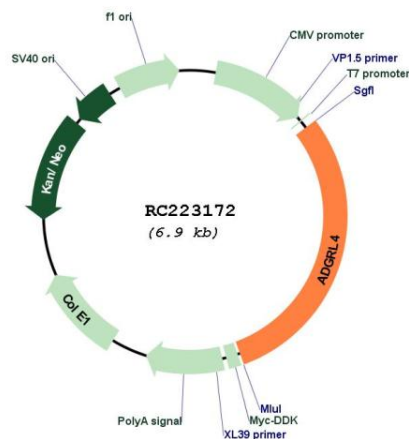
TTTTGTAATACGACTCACTATAGGGCGGCCGGAATTCGTCGACTGGATCCGGTACCGAGGAGATCTGCC
GCCGCGATCGCC

ATGAAACGCCTCCGCTCCTAGTGGTTTTTCCACTTTGTTGAATTGTTCTATACTCAAATTGCACCA
AGACACCTTGCTCCCAATGCAAAATGTGAAATACGCAATGGAATTGAAGCCTGCTATTGCAACATGGG
ATTTTCAGGAAATGGTGTCACAATTTGTGAAGATGATAATGAATGTGAAATTTAACTCAGTCCTGTGGC
GAAATGCTAATTGCACTAACACAGAAGGAAGTTATTATTGTATGTGTACCTGGCTTCAGATCCAGCA
GTAACCAAGACAGGTTTACTACTAATGATGGAACCGTCTGTATAGAAAATGTGAATGCAAACCTGCCATTT
AGATAATGTCTGTATAGCTGCAAAATTAATAAAACTTTAACAAAAATCAGATCCATAAAAGAACCTGTG
GCTTTGCTACAAGAAGTCTATAGAAATCTGTGACAGATCTTCCACCAACAGATAAATTACATATATAG
AAATATTAGCTGAATCATCTTCATTACTAGGTTACAAGAACAACACTATCTCAGCCAAGGACACCCTTTC
TAACTCAACTCTTACTGAATTTGAAAAACCGTGAATAATTTTGTCAAAGGGATACATTTGTAGTTTGG
GACAAGTTATCTGTGAATCATAGGAGAACACATCTTACAAAACCTATGCACACTGTTGAACAAGCTACTT
TAAGGATATCCCAGAGCTTCCAAAAGACCACAGAGTTTGATACAAATTCACGGATATAGCTCTCAAAGT
TTTCTTTTTGATTATATAACATGAAACATATTCATCCTCATATGAATATGGATGGAGACTACATAAAT
ATATTTCCAAAGAGAAAAGCTGCATATGATTCAAATGGCAATGTTGCAGTTGCATTTTTATATTATAAGA
GTATTGGTCTTTGCTTTCATCATCTGACAACCTCTTATTGAAACCTCAAATATGATAATTCTGAAGA
GGAGGAAAAGATCATATCTTCAGTAATTCAGTCTCAATGAGCTCAAACCCACCCACATTATATGAACCT
GAAAAAATAACATTTACATTAAGTCATCGAAAGGTCACAGATAGGTATAGGAGTCTATGTGCATTTTGG
ATTACTCACCTGATACCATGAATGGCAGCTGGTCTTCAGAGGGCTGTGAGCTGACATACTCAAATGAGAC
CCACACCTCATGCCGCTGTAATCACCTGACACATTTTGAATTTGATGCCTCTGGTCTTCCATTGGT
ATTAAGATTATAATATTCTTACAAGGATCACTCAACTAGGAATAATTATTTCACTGATTTGTCTTGCCA
TATGCATTTTTACCTTCTGGTCTTTCAGTCAAATTCAAAGCACCAGGACAACAATTCACAAAAATCTTTG
CTGTAGCCTATTTCTTGCTGAACCTGTTTTTCTGTTGGGATCAATACAAATACTAATAAGCTCTTCTGT
TCAATCATTGCCGGACTGCTACACTACTCTTTTTAGCTGCTTTTGCATGGATGTGCATTGAAGGCATAC
ATCTCTATCTCATTGTTGTGGGTGTCATCTACAACAAGGGATTTTGCACAAGAATTTTTATATCTTTGG
CTATCTAAGCCCAGCCGTTAGTTGGATTTTCGGCAGCACTAGGATACAGATATTATGGCACAACCAAA
GTATGTTGGCTTAGCACCGAAAACAACCTTATTTGGAGTTTTATAGGACCAGCATGCCTAATCATTCTTG
TTAATCTCTTGGCTTTTGGAGTCATCATATACAAAGTTTTTCGTACACTGCAGGTTGAAACCAGAAGT
TAGTTGCTTTGAGAACATAAGGTCTTGTGCAAGAGGAGCCCTCGCTCTTCTGTTCCCTTCGGCACCACC
TGGATCTTTGGGTTCTCCATGTTGTGCACGCATCAGTGGTTACAGCTTACCTCTTCACAGTCAGCAATG
CTTTCCAGGGGATGTTCAATTTTTTATTCTGTGTGTTTTATCTAGAAAGATTCAAGAAGAATATTACAG
ATTGTTCAAAAATGTCCCTGTTGTTTTGGATGTTAAGG

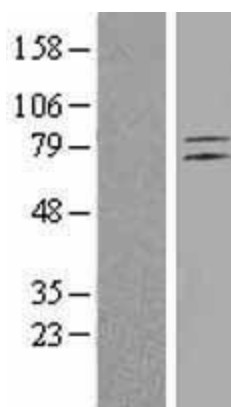
ACGCGTACGCGGCCGCTCGAGCAGAACTCATCTCAGAAGAGGATCTGGCAGCAAATGATATCCTGGATT
ACAAGGATGACGACGATAAGGTTTAA

Components:	The ORF clone is ion-exchange column purified and shipped in a 2D barcoded Matrix tube containing 10ug of transfection-ready, dried plasmid DNA (reconstitute with 100 ul of water).
Reconstitution Method:	<ol style="list-style-type: none"> 1. Centrifuge at 5,000xg for 5min. 2. Carefully open the tube and add 100ul of sterile water to dissolve the DNA. 3. Close the tube and incubate for 10 minutes at room temperature. 4. Briefly vortex the tube and then do a quick spin (less than 5000xg) to concentrate the liquid at the bottom. 5. Store the suspended plasmid at -20°C. The DNA is stable for at least one year from date of shipping when stored at -20°C.
Note:	Plasmids are not sterile. For experiments where strict sterility is required, filtration with 0.22um filter is required.
RefSeq:	<u>NM_022159.3, NP_071442.2</u>
RefSeq Size:	3619 bp
RefSeq ORF:	2073 bp
Locus ID:	64123
UniProt ID:	<u>Q9HBW9</u>
Cytogenetics:	1p31.1
Domains:	GPS, 7tm_2, EGF_CA, EGF
Protein Families:	Druggable Genome, GPCR, Transmembrane
MW:	77.6 kDa
Gene Summary:	Endothelial orphan receptor that acts as a key regulator of angiogenesis.[UniProtKB/Swiss-Prot Function]

Product images:



Circular map for RC223172



Western blot validation of overexpression lysate (Cat# [LY402915]) using anti-DDK antibody (Cat# [TA50011-100]). Left: Cell lysates from untransfected HEK293T cells; Right: Cell lysates from HEK293T cells transfected with RC223172 using transfection reagent MegaTran 2.0 (Cat# [TT210002]).