

Product datasheet for **RC223169**

CTNND1 (NM_001085468) Human Tagged ORF Clone

Product data:

Product Type:	Expression Plasmids
Product Name:	CTNND1 (NM_001085468) Human Tagged ORF Clone
Tag:	Myc-DDK
Symbol:	CTNND1
Synonyms:	BCDS2; CAS; CTNND; p120; p120(CAS); p120(CTN); P120CAS; P120CTN
Mammalian Cell Selection:	Neomycin
Vector:	pCMV6-Entry (PS100001)
E. coli Selection:	Kanamycin (25 ug/mL)



[View online »](#)

ORF Nucleotide Sequence:

>RC223169 representing NM_001085468
 Red=Cloning site Blue=ORF Green=Tags(s)

TTTTGTAATACGACTCACTATAGGGCGGCCGGAATTCGTGACTGGATCCGGTACCGAGGAGATCTGCC
 GCC**CGGATCGCC**

ATGCAGGAGCCGGGCGAGATTGTGGAGACCTACACGGAGGAGGATCCTGAGGGAGCCATGTCTGTAGTCT
 CTGTGGAGACCTCAGATGATGGGACCACTCGGCCGACAGAGACCAGGTCAAGAAAGTAGTGAAGACTGT
 GACAACACGGACAGTACAGCCAGTCGCTATGGGACCAGACGGGTTGCCTGTGGATGCTTCATCAGTTTCT
 AACAACTATATCCAGACTTTGGGTCTGATTTCCGCAAGAATGGCAATGGGGGACCTGGTCCCTATGTGG
 GGCAAGCTGGCACTGCTACCTTCTTAGGAACCTCCACTACCTCCTGATGGTTATAGTCGCCACTATGA
 AGATGGTTATCCAGGTGGCAGTGATAACTATGGCAGTCTGTCCCAGGATGACCCGATTGAGGAGCGGTAT
 AGGCCAGCATGGAAGGCTACCGGGCACCTAGTAGACAGGATGTGTATGGGCCCCAACCCAGGTTCCGG
 TAGGTGGGAGCAGCGTGGATCTGCATCGCTTTCATCCAGAGCCTTATGGGCTAGAGGATGACCAGCGTAG
 TATGGGCTATGATGACCTGGATTATGGTATGATGTCTGATTATGGCACTGCCGTCGGACTGGGACACCC
 TCTGACCCTCGTCGGCGCCTCAGGAGCTATGAAGACATGATTGGTGAGGAGGTGCCATCGGATCAATACT
 ACTGGGCTCCTTTGGCCAGCATGAGCGAGGAAGTTTAGCAAGCTTGGATAGCCTGCGCAAGGAGGGCC
 TCCACCTCCTAATTGGAGACAGCCAGAGCTGCCAGAGGTGATCGCCATGCTTGGATTCCGCTTGGATGCT
 GTCAAGTCCAATGCAGCTGCATACCTGCAACACTTATGCTACCGCAATGACAAGGTGAAGACTGACGTGC
 GGAAGCTCAAGGGCATCCAGTACTGGTGGGATTGTTAGACCATCCAAAAAGGAAGTGCACCTTGGAGC
 CTGTGGAGCTCTCAAGAATATCTCTTTGGACGTGACCAGGATAACAAGATTGCCATAAAAACTGTGAT
 GGTGTGCCTGCCCTTGTGCGATTGCTTCGAAAGGCTCGTGATATGGACCTTACTGAAGTTATTACCGGAA
 CCCTGTGGAATCTTTCATCCCATGACTCAATCAAAATGGAGATTGTGGACCATGCATGCATGCCATGCTGAC
 AGATGAAGTGATCATTCTCATTCTGGTTGGGAGCGGGAACCTAATGAAGACTGTAAAGCCACGCCATATT
 GAGTGGGAATCGGTGCTACCAACACAGCTGGCTGCCTTAGGAATGTAAGCTCAGAGAGGAGTGAAGCTC
 GCCGAAACTTCGGGAATGTGATGGTTTGTGATGCCCTCATTTCATTGTTTCAGGCTGAGATTGGGCA
 GAAGGATTCAGACAGCAAGCTTGTAGAGAACTGTGTTGCCTTCTCGGAACTTATCATATCAAGTTCAC
 CGGGAGATCCACAGGCAGAGCGTTACCAAGAGGCAGCTCCCAATGTTGCCAACAACTACTGGCCACATG
 CTGCCAGTTGCTTTGGGCAAGAAGGGCAAAGGGAAAAAACCTATAGAGGATCCAGCAAACGATACAGT
 GGATTTCCCTAAAAGAACGAGTCCAGCTCGAGGCTATGAGCTCTATTTCAGCCAGAGGTGGTTCGGATA
 TACATCTCACTTCTTAAGGAGAGCAAGACTCCTGCCATCTAGAAGCCTCAGCTGGAGCTATCCAGAACT
 TGTGTGCTGGGCCTGGACGTATGGTCGATACATCCGCTCTGCTCTGCGTCAAGAGAAGGCTCTTCTGCTC
 CATAGCTGACCTCCTGACTAATGAACATGAACGGTGGTAAAAGCTGCATCTGGAGCACTGAGAAACCTG
 GCTGTGGATGCTCGAACAAAGAATTAATTGGTAAACATGCTATTCTAATTGGTAAAGAATCTGCCAG
 GAGGACAGCAGAACTCCTCTTGGAAATTTCTCTGAGGACACTGTCATCTCTATTTTGAACACTATCAACGA
 GGTTATCGCTGAGAACTTGGAGGCTGCCAAAAAGCTTCGAGAGACACAGGGTATTGAGAAGCTGGTGTG
 ATCAACAAATCAGGGAACCGCTCAGAAAAAGAAGTTCGAGCAGCAGCACTTGATTTACAGACAATCTGGG
 GATATAAGGAACTGCGGAAGCCACTGGAAAAAGAAGGATGGAAGAAATCAGACTTTCAGGTGAATCTAAA
 CAATGCTTCCCGAAGCCAGAGCAGTCAATCATATGATGATAGTACTCTCCCTCTCATTGACCGGAACCAA
 AAATCAGATAAAGAACTGATCGGGAAGAAATTCAGATGAGCAATATGGGATCAAACACAAAATCACTAG
 ATAACAACTATCCACACCAAATGAGAGAGGAGACCACAATAGAACACTGGATCGATCGGGGGATCTAGG
 CGACATGGAGCCATTGAAGGGAACAACCCCTTGATGCAGAAGATT

ACGCGTACGCGGCCGCTCGAGCAGAACTCATCTCAGAAGAGGATCTGGCAGCAATGATATCCTGGATT
 ACAAGGATGACGACGATAAGGTTTAA

Protein Sequence: >RC223169 representing NM_001085468
Red=Cloning site Green=Tags(s)

MQEPGQIVETYTEEDPEGAMSVSVSVETSDDGTTTTRTETTQKVVKTVTTTRTVQPVAMGPDGLPVDASSVS
NNYIQT LGRDFRKNNGGPGPYVGQAGTATLPRNFHYPPDGYSRHYEDGYPGGSDNYGSLSRVTRIEERY
RPSMEGYRAPS RQDVYGPQPQVRVGGSSVDLHRFHPEPYGLEDDQ RSMGYDDL DYGMMSDYGTARRTGTP
SDPRRRLRSYEDMIGEEVPSDQYYWAPLAQHERGSLASLDSL RKGPPPPNWRQPELPEVIAMLGFR LDA
VKSNAAYLQHL CYRNDKVKTDVRKLGIPVLVGLLDHPKKEVHLGACGALKNISFGRDQDNKIAIKNCD
GVPALVRLLRKARDMDL TEVITGTLWNLSSHDSIKMEIVDHALHALTDEVIIPHSGWEREPNEDCKPRHI
EWESVL TNTAGCLRNVSSEARRKLRECDGLVDALIFIVQAEIGQKSDSKLVENCVCLLRNLSYQVH
REIPQAERYQEAAPNVANNTGPHAASCFGAKKGGKPKIEDPANDTVDFPKRTSPARGYELLFQPEVVRI
YISLLKESKTPAILEASAGAIQNL CAGRWTYGRYIRSALRQEKALSAIADLLTNEHERVVKAASGALRNL
AVDARNKELIGKHAIPNLVKNLPGGQQNSSWNFSEDTVISILNTINEVIAENLEAAKKLRETQGIEKLV
INKSGNRSEKEVRAAALVLQTIWGYKELRKPLEKEGWKKSDFQVNLNNASRSQSSH SYDDSTLPLIDRNQ
KSDKKPDREEIQMSNMGSNKSLDNNYSTPNERGDHNRTLDRSGDLGDMEPLKGTTPLMQKI

TRTRPLEQKLI SEEDLAANDILDYKDDDDKV

Restriction Sites: SgfI-MluI

Cloning Scheme:


ACCN: NM_001085468

ORF Size: 2496 bp

OTI Disclaimer: The molecular sequence of this clone aligns with the gene accession number as a point of reference only. However, individual transcript sequences of the same gene can differ through naturally occurring variations (e.g. polymorphisms), each with its own valid existence. This clone is substantially in agreement with the reference, but a complete review of all prevailing variants is recommended prior to use. [More info](#)

OTI Annotation: This clone was engineered to express the complete ORF with an expression tag. Expression varies depending on the nature of the gene.

Components: The ORF clone is ion-exchange column purified and shipped in a 2D barcoded Matrix tube containing 10ug of transfection-ready, dried plasmid DNA (reconstitute with 100 ul of water).

Reconstitution Method:

1. Centrifuge at 5,000xg for 5min.
2. Carefully open the tube and add 100ul of sterile water to dissolve the DNA.
3. Close the tube and incubate for 10 minutes at room temperature.
4. Briefly vortex the tube and then do a quick spin (less than 5000xg) to concentrate the liquid at the bottom.
5. Store the suspended plasmid at -20°C. The DNA is stable for at least one year from date of shipping when stored at -20°C.

RefSeq: [NM_001085468.1](#), [NP_001078937.1](#)

RefSeq Size: 5777 bp

RefSeq ORF: 2499 bp

Locus ID: 1500

UniProt ID: [O60716](#)

Cytogenetics: 11q12.1

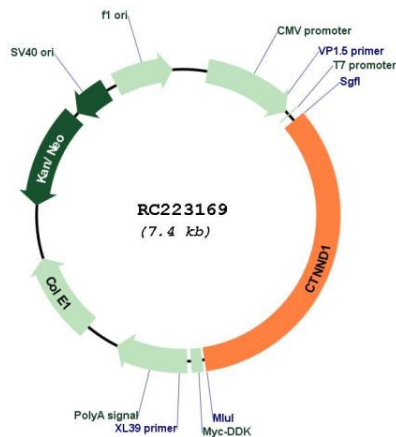
Protein Families: Druggable Genome

Protein Pathways: Adherens junction, Leukocyte transendothelial migration

MW: 93.1 kDa

Gene Summary: This gene encodes a member of the Armadillo protein family, which function in adhesion between cells and signal transduction. Multiple translation initiation codons and alternative splicing result in many different isoforms being translated. Not all of the full-length natures of the described transcript variants have been determined. Read-through transcription also exists between this gene and the neighboring upstream thioredoxin-related transmembrane protein 2 (TMX2) gene. [provided by RefSeq, Dec 2010]

Product images:



Circular map for RC223169