

Product datasheet for RC223163

CSPP1 (NM_024790) Human Tagged ORF Clone

Product data:

Product Type:	Expression Plasmids
Product Name:	CSPP1 (NM_024790) Human Tagged ORF Clone
Tag:	Myc-DDK
Symbol:	CSPP1
Synonyms:	CSPP; CSPP-L; JBTS21
Mammalian Cell Selection:	Neomycin
Vector:	pCMV6-Entry (PS100001)
E. coli Selection:	Kanamycin (25 ug/mL)
ORF Nucleotide Sequence:	>RC223163 representing NM_024790 Red=Cloning site Blue=ORF Green=Tags(s)

TTTTGTAATACGACTCACTATAGGGCGGCCGGAATTCGTCGACTGGATCCGGTACCGAGGAGATCTGCC
GCC**CGATCGCC**

ATGCTGTTCCCGCTCCAGGTGGCCGCTGTAACCTCTTCGGTCCGCGACGATCCTCTAGAGCACTGTGTG
CTCCCCGACGCGAGCCCGCTCCCCTGAAATCTGCAAAATGGCTGATAATTTGGATGAATTTATTGAAGA
GCAAAAAGCCAGATTGGCCGAAGACAAAGCAGAGTTGGAAAGTGATCCACCTTACATGGAATGAAGGGA
AAGTTGTCAGCGAAGCTTCTGAAAACAGTAAGATACTGATCTCTATGGCTAAGGAAAACATAACCACAA
ATAGTCAACAGACCAGGGTTCCTTAGGAATTGATTATGGATTAAGTTTACCCTTGGAGAAGACTATGA
ACGGAAGAACATAAAATTAAGAAGAATTGCGGCAAGATTACAGACGTTATCTTACTCAGAAAAGGTTG
AACTTGAACGTAACAAAGAATACAATCAGTTTCTCAGGGTAAGGAAGAATCCAGTGAAAAGTTCAGGC
AGGTGGAAAAGAGTACTGAGCCCAAGAGTCAGAGAAAATAAAAAACCTATTGGTCAAGTTAAGCCTGATCT
AACTTCACAAATACAGACATCTTGTGAAAATTCAGAGGGTCTAGAAAAGATGCTTAACTCCTTCAGAG
GCATATGAAGAATTCTGAACCAAGACGACTAGAGGAGGACAGATACCGACAACATAGATGATGAAATCG
AATTAAGGAATAGAAGAATTATTAAGAAAGCAAATGAAGAAGTGGCATTTCACCTAAAACATCAAAG
GTTTGAAGCAAGGCTGGCATTCCAGATAGAAGATTTACAGATTTAATGAGGATCGTGTGTTTGTAGATA
CGGTATCATAGACCAGACCAAGATCCTGAAGTAAGTGAAGAAATGGATGAGAGGTTAGATGAAAGTG
ATTTTGTAGAAGACTTTTCGAGAGTGTATACAAATGACAGGATGCACAGGAACAAACGAGGGAATATGCC
TCCTATGGAACATGATGGGATGTTATAGAACAGTCAAACATAAGAATTTTCATCTGCTGAAAATAAAGT
GCTCCAGACAATGAAACATCCAATCTGCTAATCAAGTACCTGTAGTCTTTTGCAGGGATGCTCTTTG
GAGGTGAAGATCGAGAATTATTCAGAGAAGGAAAGAGAAATACAGACTAGAAGTGTGGAACAAATGGC
TGAGCAACAGAGGAACAAGAGACGAGAAAAAGATTTAGAAGTTCAGGGTTCAGCGCTGAGCACAAGAC
CCTGAGAAATCGCTGATAGACTAAAGCAGTTTAGTGTGGCACCAAGACACTTTGAAGAGATGATACCAC
CTGAAAGACCCAGAATAGCTTTCCAGACACCTCTCCCTCTTTATCTGCCCATCTGTCCCACCCATCCC
ATCAGTTCATCTGTTCTTCTCAAATGAAGATTTGCGCAGTGGACTCAGCAGCCCTTGGTGAATG



GTGTCTCCAGGATTGCACCTCTGCCTCCACCTCCCCTACTACCACCTTTGGCTACTAACTATCGAACTC
CTTATGATGATGCATACTATTTTTATGGGTCCAGGAATACTTTTCGATCCCAGTCTTGCTTATTATGGTTC
AGGAATGATGGGCGTACAGCCTGCAGCTTATGTTAGTGTCTGTCAACCCACCACTAGCACAACCTGTT
GTGAATACGGTTGGACAGAATGAACTGAAGATTACAAGTGATCAAGTGATAAATTCAGGATTGATTTTTG
AAGATAAACCCGAAACCTTCCAAACAGTCACTTCAGTCTTACCAAGAGGCTTTGCAGCAGCAGATTCCGGGA
AAGAGAAGAAAGAAGGAAGAAAGAACGTGAAGAAAAAGAAGAATGAAGCTAAATAGAAGCTGAAATG
AGAACATAAATCCCTGGGGAAAAGGTGGAGGTGGTCTCCTCTCAGGGATGCAAAAGGAAATCTGATAA
CTGATTTGAATAGGATGCACAGACAAAATATAGATGCCTACCATAACCCAGATGCAAGAACATATGAAGA
TAAAAGGGCTGTTGTATCTCTAGACCCAAATTTAGCCACTTCAAATGCTGAGAACCTAGAAGATGCTGCA
AATAAAAGCTCAGGTCATATGCAAAACAGAGCTCTCCTTTTGTCTCGGGGAAATGTATTTGGTGAGCCTC
CAACTGAACTTCAGATTAACAGCAAGAATTATACAAGAATTTTCTTCGTTTCCAGATTGAGGAAAAAGAA
ACAAAGAGAGGAAGCAGAGCGAGAGAGACTGAGAATTGCAGAAGAAAAAGAAGAAAGACGGCTTGCAGAA
CAGAGGGCACGAATTCAGCAGGAGTATGAAGAGGAACAGGAAAAGAAAAGAGAGAAAGAGGAGGAGCAAA
GGCTAAAAAATGAAGAGCATATTCGGTTAGCTGAAGAAAGACAAAAGAAGCAGAAAGAAAAGAAGAAAGA
AGAAGAAGAAAAATATAACCTGCAACTCAGCACTACTGTGAAAGAGACAATTTGATTGGGAAGAAACA
AAGCACATGAGACAGCCTTCTCCTATAGTTCCTGCTCTTCAGAACAAAATTGCAAGCAAACTCCAAGAC
CTCCTTCAGTTGACAGCATCATACGTTCCCTTTATTCATGAAAGTTCCATGTCCAGGGCACAGTCAACCCC
GGTACCTGCCAGGAAAAATCAGCTCCGTGCAGAAGAGGAGAAAAAAATGTAATTATGGAATTATCAGAA
ATGAGAAAACAGCTTCGTAGTGAAGAGAGGCGTCTACAAGAGCGATTGCTACACATGGACAGTGTATGATG
AAATTCATCAGGAAAAAGGAAAGGAATCCCATGGATATATTTGATATGGCTAGACATCGGTTGCAAGC
TCCTGTGAGAAGACAGTCCCCTAAGGGCTTAGACGCTGCCACTTTTCAGAATGTTTCATGATTTTAAATGAG
CTGAAAGATAGAGATTCAGAAACACGAGTTGATCTGAAATTTATGTACCTGGATCCTCCAAGAGATCATC
ACACCTTAGAGATTGAGCAGCAAGCCCTGCTAAGAGAGCAGCAGAAGAGGCTGAACAGAATAAAAAATGCA
GGAAGGTGCCAAAGTTGACTTAGATGCCATCCCAAGTGCTAAAGTACGAGAGCAAAGAATGCCAGAGAT
GACACTAGTGATTTCTTGAAAACTCATTATTGGAATCTGATAGTGCTTTTATTGGGGCTTACGGTGAGA
CATATCCTGCCATTGAAGATGACGTCCTCCCTCCACCATCACAGTTGCCCTCTGCACGGGAGCGCAGGAG
GAACAAATGGAAGGACTAGACATTGATAGCAGTCGTCTTAATGTAGCACCAGATGGTCTCTCTCTAAAA
TCTATATCCAGTGTAATGTTGATGAGCTTAGAGTGAGAAATGAGGAACGAATGCGAAGACTGAATGAAT
TTCACAATAAACCTATTAATACAGATGATGAGAGTTCAGTGGTTGACCCTGATGACATCATGAAACACAT
AGGGGATGACGGATCAAACCTCTGTAGCAACTGAGCCCTGGCTCCGCCCTGGCACTTCAGAAACGCTGAAA
CGTTTCATGGCAGAGCAGCTGAACCAGGAGCAGCAGCAGATTCCCTGGAACCAGGCACTTCACTTGGC
AGGCCTGTGACTGCACATGGT

ACGCGTACGCGGCCGCTCGAGCAGAACTCATCTCAGAAGAGGATCTGGCAGCAAATGATATCCTGGATT
ACAAGGATGACGACGATAAGGTTTAA

Protein Sequence: >RC223163 representing NM_024790
 Red=Cloning site Green=Tags(s)

MLFPLQVAAVTSSVRDDPLEHCVSPRTRARSPEICKMADNLDEFIEEQKARLAEDKAELESDPPYMEMKG
 KLSAKLSENSKILISMAKENIPPNSQQTRGSLGIDYGLSLPLGEDYERKKHKLKEELRQDYRRYL TQERL
 KLERNKYQNQFLRGKEESSEKFRQVEKSTEPKSQRNKKPIGQVKPDLTSQIQTSCENSEGPRKVDLTPSE
 AYEELLNQRRLEEDRYRQLDDEIELNRRIIKKANEEVGISNLKHQRFASKAGIPDRRFHRFNEDRVFDR
 RYHRPDQDPEVSEEMDERFRYESDFDRRLSRVYTNDRMHRNKRGNMPPMEHDGDVIEQSNIRISSAENKS
 APDNETSKSANQDTCSPFAGMLFGGEDRELIQRRKEKYRELELEQMAEQQRNKRREKDLELRVAASGAQD
 PEKSPDRLKQFSVAPRHFEEMIPPERPRIAFTPLPPLSAPSVPPIPSVHPVPSQNEDLRSGLSSALGEM
 VSPRIAPLPPPPLLPPLATNYRTPYDDAYFYGSRNTFDP SLAYYGSGMMGVQPAAYVSAPVTHQLAQPV
 VNTVGQNELKITSQVINSGLIFEDKPKPSKQSLQSYQEALQQQIREEREERRKKEREKEEYEAKLEAEM
 RTYNPWGKGGGAPLRDAKGNLITDLNRMHRQNI DAYHNP DARTYEDKRAVVS LDPN LATSNAENLEDA
 NKSSGHMQTQSSPFARGNVFGEPPTELQIKQQELYNFLRFQIEEKKQREEAERERLRIAEKEERRLAE
 QRARIQQEYEEQEKKREKEEQRLKNEEHIRLAERQKEAERKKKEEYKYNLQLQHYCERDNLIGEET
 KHMQRQSPVLPALQNKIASKLQRPPSVDSIIRSF IHESSMSRAQSPVPARKNQLRAEEKKNVIMELSE
 MRKQLRSEERLQERLLHMSDDEIPIRKKERNPMDIFDMARHRLQAPVRRQSPKGLDAATFQNVHDFNE
 LKDRDSETRVDLKFMYLDPDRDHHTLEIQQQALLREQQKRLNRIKMQEGAKVDLDAIPSAKVREQRMPRD
 DTSDFLKNLSLESDSAFIGAYGETYPAIEDDVLPPPSQLPSARERRRNKWKGLDIDSSRPNVAPDGLSLK
 SISSVNVDELVRNEERMRLNEFHNPINTDDESSLVDPDDIMKHI GDDGNSVATEPWL RPTGSETLK
 RFMAEQLNQEQQIPGKPGTFTWQGLSTAHG

TRTRPLEQKLISEEDLAANDILDYKDDDDKV

Chromatograms: https://cdn.origene.com/chromatograms/mk8116_f11.zip

Restriction Sites: SgfI-MluI

Cloning Scheme:

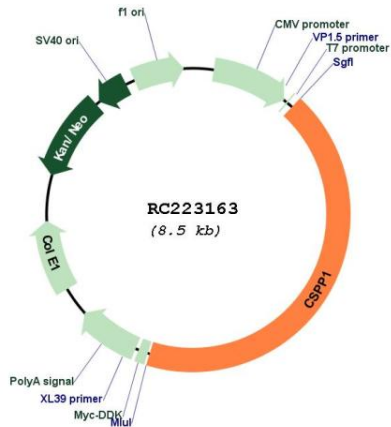


ACCN: NM_024790

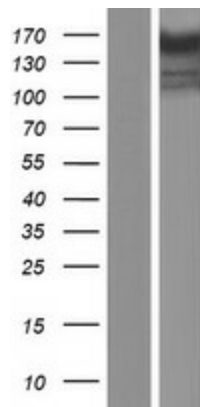
ORF Size: 3663 bp

OTI Disclaimer:	<p>Due to the inherent nature of this plasmid, standard methods to replicate additional amounts of DNA in E. coli are highly likely to result in mutations and/or rearrangements. Therefore, OriGene does not guarantee the capability to replicate this plasmid DNA. Additional amounts of DNA can be purchased from OriGene with batch-specific, full-sequence verification at a reduced cost. Please contact our customer care team at custsupport@origene.com or by calling 301.340.3188 option 3 for pricing and delivery.</p> <p>The molecular sequence of this clone aligns with the gene accession number as a point of reference only. However, individual transcript sequences of the same gene can differ through naturally occurring variations (e.g. polymorphisms), each with its own valid existence. This clone is substantially in agreement with the reference, but a complete review of all prevailing variants is recommended prior to use. More info</p>
OTI Annotation:	This clone was engineered to express the complete ORF with an expression tag. Expression varies depending on the nature of the gene.
Components:	The ORF clone is ion-exchange column purified and shipped in a 2D barcoded Matrix tube containing 10ug of transfection-ready, dried plasmid DNA (reconstitute with 100 ul of water).
Reconstitution Method:	<ol style="list-style-type: none"> 1. Centrifuge at 5,000xg for 5min. 2. Carefully open the tube and add 100ul of sterile water to dissolve the DNA. 3. Close the tube and incubate for 10 minutes at room temperature. 4. Briefly vortex the tube and then do a quick spin (less than 5000xg) to concentrate the liquid at the bottom. 5. Store the suspended plasmid at -20°C. The DNA is stable for at least one year from date of shipping when stored at -20°C.
RefSeq:	NM_024790.6 , NP_079066.5
RefSeq Size:	4735 bp
RefSeq ORF:	3666 bp
Locus ID:	79848
UniProt ID:	Q1MSJ5
Cytogenetics:	8q13.1-q13.2
MW:	141.8 kDa
Gene Summary:	<p>This gene encodes a centrosome and spindle pole associated protein. The encoded protein plays a role in cell-cycle progression and spindle organization, regulates cytokinesis, interacts with Nephrocystin 8 and is required for cilia formation. Mutations in this gene result in primary cilia abnormalities and classical Joubert syndrome. Alternatively spliced transcript variants encoding distinct isoforms have been found for this gene. [provided by RefSeq, Apr 2014]</p>

Product images:



Circular map for RC223163



Western blot validation of overexpression lysate (Cat# [LY411051]) using anti-DDK antibody (Cat# [TA50011-100]). Left: Cell lysates from untransfected HEK293T cells; Right: Cell lysates from HEK293T cells transfected with RC223163 using transfection reagent MegaTran 2.0 (Cat# [TT210002]).