

Product datasheet for RC223154

HOMER2 (NM_199330) Human Tagged ORF Clone

Product data:

| | |
|---------------------------|---|
| Product Type: | Expression Plasmids |
| Product Name: | HOMER2 (NM_199330) Human Tagged ORF Clone |
| Tag: | Myc-DDK |
| Symbol: | HOMER2 |
| Synonyms: | ACPD; CPD; DFNA68; HOMER-2; VESL-2 |
| Mammalian Cell Selection: | Neomycin |
| Vector: | pCMV6-Entry (PS100001) |
| E. coli Selection: | Kanamycin (25 ug/mL) |
| ORF Nucleotide Sequence: | >RC223154 representing NM_199330 Red=Cloning site Blue=ORF Green=Tags(s) |

TTTTGTAATACGACTCACTATAGGGCGGCCGGAATTCGTCGACTGGATCCGGTACCGAGGAGATCTGCC
GCC**CGGATCGCC**

ATGGGAGAACAGCCCATCTTCACCACCCGAGCGCATGTCTTCCAGATTGACCCCAACACCAAGAAGAACT
GGATGCCTGCGAGCAAGCAGGCGGTCCCGTTTCTACTTCTATGATGTCACAAGGAACAGCTATCGGAT
CATCAGTGTGGACGGAGCAAGGTGATCATAAACAGCACAATCACACCGAATATGACCTTACCAAAAACG
TCACAGAAAGTTGGCAGTGGCCGACAGCAGACCAACACAGTGTGGTTGGGTTTCTCTGAGC
AGCAGCTGACAAAGTTTGCAGAGAAATCCAGGAGGTGAAAGAAGCTGCCAAGATAGCCAAGACAAGAC
GCAGGAGAAAATCGAGACCTCAAGTAATCATTCCAAGAATCTGGGCGTGAACCCCATCTTCTACTCAG
GCATCCAGTGTCACGGGACGGACGATGAAAAGGCCTCTCACGCCGGTCCAGCCAACACACACCTGAAGT
CTGAGAATGACAAGCTGAAGATTGCCTTGACGCAGAGCGCAGCCAACGTGAAGAAGTGGGAGATCGAGCT
GCAGACCTTCGGGAGAGCAATGCACGGCTGACCACAGCACTGCAGGAGTCCGGCAGCCAGTGTGGAGCAG
TGAAGAGGCAGTTCTCCATCTGCCGTGATGAGAATGACCGGCTCCGCAACAAGATTGATGAGCTGGAAG
AACAAATGCAGTGAGATCAACAGAGAGAAGGAGAAGAACACGCAGCTGAAGAGGAGGATCGAGGAGCTGGA
GGCAGAGCTCCGAGAAAAGGAGACAGAGCTGAAAGATCTCCGAAAACAAAGTGAATCATACTCAGCTC
ATGTCAGAGTGCGAATATGTCTTGAGAAGCTAGAGCGGCAGAGAGACAATCAAACCTGGAAGACA
AAGTGCCTTCTTAAAGACAGACATTGAGGAGAGCAAATACCGACAGCCACCTGAAGGTGGAGTTGAA
GAGCTTCTGGAGGTGCTGGACGGGAAGATTGACGACCTGCATGACTTCCGCCGAGGGCTCTCAAGCTG
GGCACCATAAC

ACGCGTACGCGGCCGCTCGAGCAGAACTCATCTCAGAAGAGGATCTGGCAGCAAATGATATCCTGGATT
ACAAGGATGACGACGATAAGGTTAA



[View online »](#)

Protein Sequence: >RC223154 representing NM_199330
Red=Cloning site Green=Tags(s)

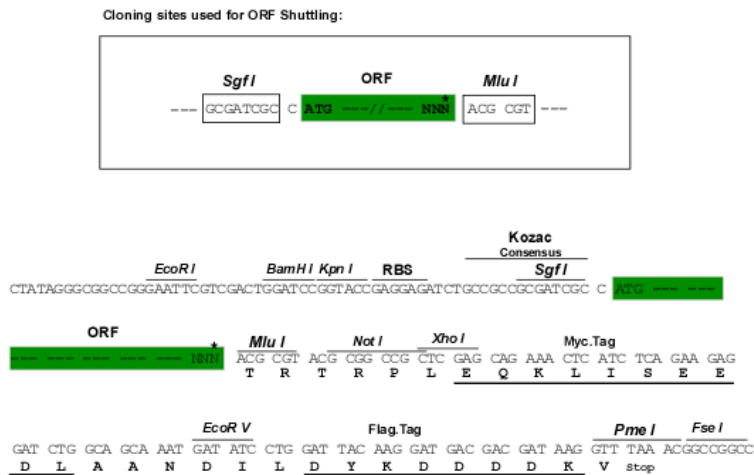
MGEQPIFTTRAHVFDIDPNTKKNWMPASKQAVTVSYFYDVTRNSYRIISVDGAKVIINSTITPNMTFTKT
 SQKFGQWADSRANTVFGGLFSSEQQLTKFAEKFEVKEAAKIAKDKTQEKIETSSNHSQESGRETPSSTQ
 ASSVNGTDDKASHAGPANTHLKSENDKLIKIALTQSAANVKKWEIQLTLRESNARLTTALQESAASVEQ
 WKRQFYSICRDENDRLRNKIDEEEQCEINREKEKNTQLKRRIEELEAELREKETELKDLRKQSEIIPQL
 MSECEYVSEKLEAAERDNQNLLEDKVRSLKTDIEESKYRQRHLKVELKSFLEVLGDGKIDDLHDFRRLSKL
 GTDN

TRTRPLEQKLISEEDLAANDILDYKDDDDKV

Chromatograms: https://cdn.origene.com/chromatograms/mk8054_a02.zip

Restriction Sites: SgfI-MluI

Cloning Scheme:



* The last codon before the Stop codon of the ORF

ACCN: NM_199330

ORF Size: 1062 bp

OTI Disclaimer: The molecular sequence of this clone aligns with the gene accession number as a point of reference only. However, individual transcript sequences of the same gene can differ through naturally occurring variations (e.g. polymorphisms), each with its own valid existence. This clone is substantially in agreement with the reference, but a complete review of all prevailing variants is recommended prior to use. [More info](#)

OTI Annotation: This clone was engineered to express the complete ORF with an expression tag. Expression varies depending on the nature of the gene.

Components: The ORF clone is ion-exchange column purified and shipped in a 2D barcoded Matrix tube containing 10ug of transfection-ready, dried plasmid DNA (reconstitute with 100 ul of water).

Reconstitution Method:

1. Centrifuge at 5,000xg for 5min.
2. Carefully open the tube and add 100ul of sterile water to dissolve the DNA.
3. Close the tube and incubate for 10 minutes at room temperature.
4. Briefly vortex the tube and then do a quick spin (less than 5000xg) to concentrate the liquid at the bottom.
5. Store the suspended plasmid at -20°C. The DNA is stable for at least one year from date of shipping when stored at -20°C.

RefSeq: [NM_199330.3](#)

RefSeq Size: 2005 bp

RefSeq ORF: 1065 bp

Locus ID: 9455

UniProt ID: [Q9NSB8](#)

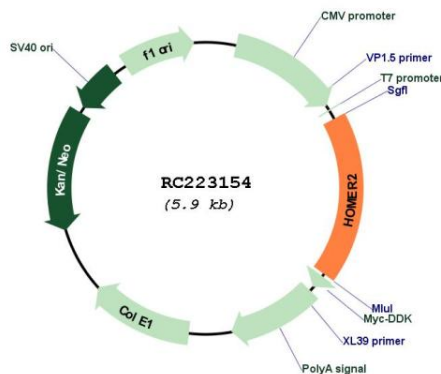
Cytogenetics: 15q25.2

Protein Families: Druggable Genome

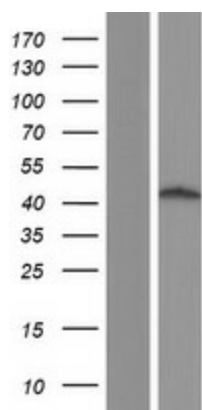
MW: 40.4 kDa

Gene Summary: This gene encodes a member of the homer family of dendritic proteins. Members of this family regulate group 1 metabotropic glutamate receptor function. The encoded protein is a postsynaptic density scaffolding protein. Alternative splicing results in multiple transcript variants. Two related pseudogenes have been identified on chromosome 14. [provided by RefSeq, Jun 2011]

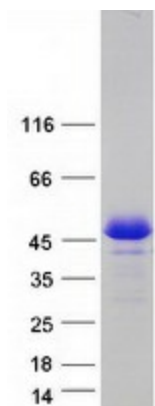
Product images:



Circular map for RC223154



Western blot validation of overexpression lysate (Cat# [LY404625]) using anti-DDK antibody (Cat# [TA50011-100]). Left: Cell lysates from untransfected HEK293T cells; Right: Cell lysates from HEK293T cells transfected with RC223154 using transfection reagent MegaTran 2.0 (Cat# [TT210002]).



Coomassie blue staining of purified HOMER2 protein (Cat# [TP323154]). The protein was produced from HEK293T cells transfected with HOMER2 cDNA clone (Cat# RC223154) using MegaTran 2.0 (Cat# [TT210002]).