

Product datasheet for **RC223153**

HSPA12A (NM_025015) Human Tagged ORF Clone

Product data:

Product Type:	Expression Plasmids
Product Name:	HSPA12A (NM_025015) Human Tagged ORF Clone
Tag:	Myc-DDK
Symbol:	HSPA12A
Mammalian Cell Selection:	Neomycin
Vector:	pCMV6-Entry (PS100001)
E. coli Selection:	Kanamycin (25 ug/mL)



[View online »](#)

ORF Nucleotide Sequence:

>RC223153 representing NM_025015
 Red=Cloning site Blue=ORF Green=Tags(s)

TTTTGTAATACGACTCACTATAGGGCGGCCGGGAATTCGTCGACTGGATCCGGTACCGAGGAGATCTGCC
 GCC**GCGATCGCC**

ATGGCGGACAAGGAGGCCGGCGGCAGCGACGGGCCCCGAGAAACGGCTCCACATCTGCATATTCATCTC
 CAGCCCGAGTCTTGGGACACAGGAATAACGCCTCTGTCCCCCTCCCATATTGTGAACGACACTGACTC
 CAACGTCTCAGAACAGCAGTCATTTCTCGTGGTGGCCGTCGACTTTGGGACCACATCCAGTGGCTAT
 GCCTACAGCTTCACCAAGGAGCCGGAATGCATCCATGTGATGAGGCGATGGGAGGGAGGTGACCCTGGTG
 TGTCCAATCAGAAGACTCCAACCACCATCTTGCTGACTCCCGAGAGGAAGTTCCACAGCTTCGGGTATGC
 CGCCAGGGACTTTTACCATGACCTGGATCCCAATGAGGCCAAGCAGTGGCTGTACCTGGAGAAGTTCAAG
 ATGAAGCTGCACACCCTGGGGACCTCACCATGGATACAGACCTGACGGCAGCAAATGGCAAGAAAGTCA
 AAGCCCTTGAAATCTTTGCTTATGCCCTGCAGTACTTTAAGGAGCAGGCGCTGAAGGAGCTGAGTGACCA
 GCGGGGTTTCGGAGTTCGAGAAGCTCTGATGTCAGATGGGTTCATCACGGTGCCTGCCATCTGGAAGCAGCCG
 GCCAAGCAGTTTCATGAGACAAGCTGCCTACCAGGCAGGCCTGGCCTCCCCGAGAACTCGGAGCAGCTCA
 TCATTGCCTTGGAGCCTGAGGCAGCCTCTATCTACTGCCGAAAGCTGCGGCTACACCAGATGATTGAGCT
 GAGCAGCAAGGCAGCCGTCATGGGTACAGCGCAGTGACACAGTAGGAGCTGGGTTTACACAGGCTAAG
 GAACACATACGGCGTAATCGGCAGAGTCGGACCTTTTGGTGGAGAATGTCATAGGAGAAATCTGGTCCG
 AGCTGGAGGAAGGTGATAAGTATGTGGTGTGGACAGTGGCGGTGGCACCCTAGACCTGACAGTCCATCA
 GATCCGGTTACCGGAGGGACACCTTAAGGAACTGTATAAAGCAACAGGCGGACCCATGATCTTTAGGA
 GTAGATTATGAGTTCGAAAACTTCTGTATAAAATATTTGGAGAGGATTTTATTGAACAATCAAAATCA
 AACGCCCTGCAGCCTGGGTTGACTTAATGATTGCGTTTGAGTCTCGAAAAGGGCGGCTGCCCCAGACAG
 AACTAACCCGCTGAACATCACCTTGCCTTCTCCTTTCATTGACTACTACAAGAAGTTCGCGGGCACAGT
 GTGGAGCACGCCTTGGGAAAAGCAATGTGGATTTTGTGAAGTGGTCTCGCAGGGGATGCTGCGGATGA
 GTCCAGATGCCATGAACGCCCTTTTAAAGCCGACCATCGATAGCATCATTGAGCATCTCCGGACCTGTT
 TCAGAAGCCCGAGGTGTCCACCGTCAAGTTCCTCTTTCTGGTGGGCGGCTTTGCCGAGGCGCCCTGCTG
 CAGCAGGCGGTGCAGGCTGCTTTTGGGACCAGTGCCGGATCATCATCCCCAGGACGTGGGCTCACCA
 TCCTCAAGGGTCCGCTCCTTTTGGCTGGACCCCGGGTTCATCAAGGTGCGCCGTCGCCGCTCACCTA
 CGGGGTAGGCGTGTGAACCGTACGTGGAGGGCAAGCACCCGCTGAGAAGCTGCTGGTGAAGGATGGC
 ACTCGGTGGTGCACCGACGTCTTTGACAAGTTCATCTCTGCCGACCAGTCTGTGGCTCTGGGTGAGCTGG
 TCAAGCGTAGCTACACCCCGCCAAGCCCTCCCAGCTGGTCATTGTCATCAACATCTACAGCTCTGAGCA
 CGACAACGTCAGTTCATCACTGATCCCGGGTGAAGAAGTGTGGCACGCTCCGCCTGGATCTCACAGGG
 ACCAGTGGCACTGCGGTGCCCGCCGGAGGGAGATCCAGACCCTTATGCAGTTCGGGGACACCGAGATCA
 AAGCCACAGCCATTGATATAGCCACTTCGAAGAGTGTCAAAGTTGGGATCGACTTCTTAAATTAC

ACGCGTACGCGGGCCGCTCGAGCAGAACTCATCTCAGAAGAGGATCTGGCAGCAAATGATATCCTGGATT
 ACAAGGATGACGACGATAAGGTTTAA

Protein Sequence: >RC223153 representing NM_025015
Red=Cloning site Green=Tags(s)

```
MADKEAGGSDGPRETAPTSAYSSPARSLGDTGITPLSPSHIVNDTDSNVSEQQSFLVVVAVDFGTTSSGY
AYSFTKEPECIHVMRRWEGGDPGVSNQKTPTTILLTPERKFHFSFGYAARDFYHDLDPNEAKQWLYLEKFK
MKLHTTGDLTMDTDLTAANGKKVKALEIFAYALQYFKEQALKELSDQAGSEFENSVDVRWVITVPAIWKQP
AKQFMRQAAYQAGLASENSEQLIIALEPEAASIYCRKLRHQMIELSSKAAVNGYSGSDTVGAGFTQAK
EHIRNRQSRFTFLVENVIWSELEEGDKYVVVDSGGTVDLTVHQIRLPEGHLKELYKATGGPYGSLG
VDYEFKLLYKIFGEDFIEQFKIKRPAAWVDLMIASFESRRAAAPDRTNPLNITLPSFIDYKKFRGHS
VEHALRKSNDVFKWSSQGLRMSPDAMNLFKPTIDSIIEHLRDLFQKPEVSTVKFLFLVGGFAEAPLL
QQAVQAAFQDQCRIIIPQDVGLTILKGAVLFGLDPAVIKVRSSPLTYGVGLNRYVEGKHPPEKLLVKDG
TRWCTDVDFDKFISADQSVAGELVKRSYTPAKPSQLVIVINIYSSEHDNVSFITDPGVKCKGTLRLDLTG
TSGTAVPARREIQTLMQFGDTEIKATAIDIATSKSVKVGIDFLNY
```

TRTRPLEQKLISEEDLAANDILDYKDDDDKV

Chromatograms: https://cdn.origene.com/chromatograms/mk8045_f01.zip

Restriction Sites: SgfI-MluI

Cloning Scheme:



ACCN: NM_025015

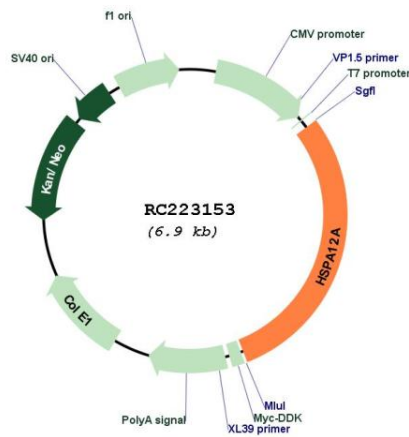
ORF Size: 2025 bp

OTI Disclaimer: The molecular sequence of this clone aligns with the gene accession number as a point of reference only. However, individual transcript sequences of the same gene can differ through naturally occurring variations (e.g. polymorphisms), each with its own valid existence. This clone is substantially in agreement with the reference, but a complete review of all prevailing variants is recommended prior to use. [More info](#)

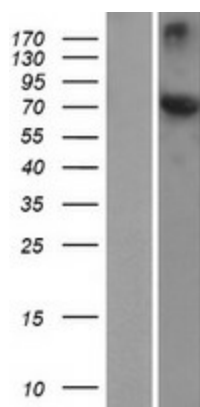
OTI Annotation: This clone was engineered to express the complete ORF with an expression tag. Expression varies depending on the nature of the gene.

Components:	The ORF clone is ion-exchange column purified and shipped in a 2D barcoded Matrix tube containing 10ug of transfection-ready, dried plasmid DNA (reconstitute with 100 ul of water).
Reconstitution Method:	<ol style="list-style-type: none"> 1. Centrifuge at 5,000xg for 5min. 2. Carefully open the tube and add 100ul of sterile water to dissolve the DNA. 3. Close the tube and incubate for 10 minutes at room temperature. 4. Briefly vortex the tube and then do a quick spin (less than 5000xg) to concentrate the liquid at the bottom. 5. Store the suspended plasmid at -20°C. The DNA is stable for at least one year from date of shipping when stored at -20°C.
RefSeq:	<u>NM_025015.3</u>
RefSeq Size:	5739 bp
RefSeq ORF:	2028 bp
Locus ID:	259217
UniProt ID:	<u>O43301</u>
Cytogenetics:	10q25.3
MW:	74.8 kDa
Gene Summary:	Adapter protein for SORL1, but not SORT1. Delays SORL1 internalization and affects SORL1 subcellular localization.[UniProtKB/Swiss-Prot Function]

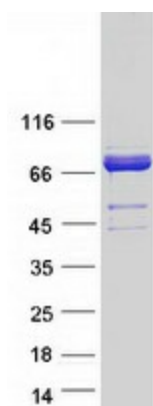
Product images:



Circular map for RC223153



Western blot validation of overexpression lysate (Cat# [LY410918]) using anti-DDK antibody (Cat# [TA50011-100]). Left: Cell lysates from untransfected HEK293T cells; Right: Cell lysates from HEK293T cells transfected with RC223153 using transfection reagent MegaTran 2.0 (Cat# [TT210002]).



Coomassie blue staining of purified HSPA12A protein (Cat# [TP323153]). The protein was produced from HEK293T cells transfected with HSPA12A cDNA clone (Cat# RC223153) using MegaTran 2.0 (Cat# [TT210002]).