

Product datasheet for RC223140

LMTK3 (NM_001080434) Human Tagged ORF Clone

Product data:

Product Type: Expression Plasmids
Product Name: LMTK3 (NM_001080434) Human Tagged ORF Clone
Tag: Myc-DDK
Symbol: LMTK3
Synonyms: LMR3; PPP1R101; TYKLM3
Mammalian Cell Selection: Neomycin
Vector: pCMV6-Entry (PS100001)
E. coli Selection: Kanamycin (25 ug/mL)
ORF Nucleotide Sequence: >RC223140 representing NM_001080434
Red=Cloning site Blue=ORF Green=Tags(s)

TTTTGTAATACGACTCACTATAGGGCGGCCGGAATTCGTCGACTGGATCCGGTACCGAGGAGATCTGCC
 GCCCGGATCGCC

ATGAGGCAAGTGCTGTGGTTGTGTAATGTCTGCGTAACCGCACGGGAAACCCGCCACCACCTCCACCTCC
 CTGCCATCTCGACAAGATGCCTGCCCCGGCGCCCTCATCTCCTTGC GGCCGTCTCCGCTCCGGCTG
 CCTGGCGTCCCCGGCCACCCCGATGGATTGCGCCTGGGCGGGCTCCTCTGGCTCCTCCCTACGCTGTG
 GTCCTCATTTCCTGCTCCGGCTGCTGGCCTTCATCTTCTCCTCCTCACCTGTCTGTGCTGCAAACGGG
 GCGATGTCGGCTTCAAGGAATTTGAGAACCCTGAAGGGGAGGACTGCTCCGGGGAGTACACTCCCCCTGC
 GGAGGAGACCTCCTCCTCACAGTCGCTGCCTGATGTCTACATTCTCCCGCTGGCTGAGGTCTCCCTGCCA
 ATGCCTGCCCCGAGCCTTCACACTCAGACATGACCACCCCCCTGGGCCTTAGCCGGCAGCACCTGAGCT
 ACCTGCAGGAGATTGGGAGTGGCTGGTTTGGGAAGGTGATCCTGGGAGAGATTTTCTCCGACTACACCCC
 CGCCCAGGTGGTGGTGAAGGAGCTCCGAGCCAGCGCGGGGCCCTGGAGCAACGCAAGTTCATCTCGGAA
 GCACAGCCGTACAGGAGCCTGCAGCACCCCAATGTCTCCAGTGCCTGGGTCTGTGCGTGGAGACGCTGC
 CGTTTCTGCTGATTATGGAGTTCTGTCAACTGGGGACCTGAAGCGTTACCTCCGAGCCCAGCGGCCCCC
 CGAGGGCCTGTCCCCTGAGCTACCCCTCGAGACCTGCGGACGCTGCAGAGGATGGCCTGGAGATCGCC
 CGCGGGCTGGCGCACCTGCATTCACAACTACGTGCACAGCGACCTGGCCCTGCGCAACTGCCTGCTGA
 CCTCTGACCTGACCGTGGCGCATCGGAGACTACGGGCTGGCCACAGCAACTACAAGGAGGACTACTACCT
 GACCCCAGAGCGCCTGTGGATCCCACTGCCTGGGCGGCCCCGAGCTCCTCGGGGAGCTCCACGGGACC
 TTCATGGTGGTGGACCAGAGCCGCGAGAGCAACATCTGGTCCCTGGGGGTGACCTGTGGGAGCTGTTTG
 AGTTTGGGGCCCAGCCCTACCGCCACCTGTGAGACGAGGAGGTCTCGCCTTCGTGGTCCGCCAGCAGCA
 TGTGAAGCTGGCCCGGCCGAGGCTCAAGCTGCCTTACGCGGACTACTGGTATGACATTCTCAGTCTGC
 TGGCGGCCACCTGCCAGCGCCCTCAGCCTCTGATCTCCAATTGCAGCTCACCTACTTGCTCTCCGAGC
 GGCTCCCCGGCCCCACCGCCGCCACCCCAACCCGAGACGGTCCCTTCCCTGGCCCTGGCCCCCTGC
 ACACAGTGGCCCCCGCCGGGACCTCTCCTCACCGTCCCCCTACTGGATGGCTTCCCTGGAGCCGAC



[View online »](#)

CCCGACGATGTGCTCACGGTCACCGAGAGTAGCCGCGGCCTCAACCTCGAGTGCCTGTGGGAGAAGGCC
GGCGTGGGGCCGGCCGGGGTGGGGGGCACCTGCCTGGCAGCCGGCGTCGGCCCCCGGCCCCACGC
CAACCCCTCCAACCCCTTCTACGAGGCGCTGTCCACGCCAGCGTGTCTGCCTGTATCAGCGCCCGCAGC
CCCTCCGTGAGCAGCGAGTACTACATCCGCTTGGAGGAGCACGGTCCCCCTCTGAGCCCTTTCCCA
ACGACTGGGACCCCTGGACCCAGGAGTGCCTGCCCTCAGGCCCCAGGCCCTCCGAGGTCCCCA
GCTGGTGTCCGAGACCTGGCCCTCCCCCTTTCCCTGCGCCCCGGCCCTTCCAGCCAGTCTCAGCC
TCAGCAGCTTCTGTGAGCGGCTGGGACCCCGAGGGCCGGGGCCGGGGAGACCTGGCCGGGAGAC
CTGCCGAGGTCTTGGGGAGCGGGGACCGCCCGTGGTGGAAGAAGAAGAGGAGGAGGAGGAGGCGAG
CTCCCCAGGGGAAGACAGCAGCAGCCTTGGAGGTGGCCCAAGCCCGGGTCCCCACCTGTCCCTG
TGCAGCCGCGAGGGGCCTGCTCCTGCCTGCCACTGGAGCGGGGGACGCCGTAGCAGGCTGGGAGGCC
ACCCTGCTCTTGGCTGCCCCACCCCGGAGGACGACTCCTCGTGCAGGACAGCGGGCTCCCTGGC
CGACTTGCCATGGCCCCCGGCTCGGCCCGCCGAGTTTCTGGACCCCTCATGGGGCGGCGGG
CCCCAGTACCCGGGGGGGCCACCTCCGCTCCCCCGCCGCCACCTCTCGGCCCGCCGG
ACCCGGCCGCTCCCCGACCCCTTCGGCCGTGGCCAGTCCCGTTTCCAGCCCTCTCGTCCGGGGCC
CAAGCCGGGGACAGCGCTACGAGACCGAGACCCCTTTTCCCAGAGGAGCCTTCCAGGTGGGGG
GGGCCGAGGAGAAGGGTCCCTCGGCCGCGGGCTCCCCCGAGCCACCGACCCAGGAGCGCCCGGC
CACCTCCAGACCCGGTCCGCTCCCACTCCCGGGCCCGGGAGAAGCCGACCTTCGTGGTTCAAGTGAG
CACGGAACAGCTGCTGATGTCCCTGCGGGAGGATGTGACAAGAACCTCCTGGGGAGAAGGGGGGACA
GCCCGGAGACAGGACCCAGGAAGCGGGGAGAGGCCCGGGAACAGAGAGAAAGTCCCGGGCTGAACA
GGGACCCGACAGTCTGGGCAACGGGAACAAGCCCAAGCCTGAGCCTCCCAAGTGAACGGGGTACAGT
GCTGGAGAACGGGACAGAGAGCCCGAGCATCGAGGAGAAGCGGGGAGAAATGGGGCCCTGGGTCC
CCGAGAGAGAAGAGAAGTGTGGAGAATGGGAGCTGACACCCCAAGGAGGGAGAGAAAGCGTGG
AGATGGGGAGCTGAGGTCCCCAGAGGCCGGGAGAAAGTGTGGTGAATGGGGCCCTGACACCCAAA
GAGCGAGGACAAGGTGTACAGAAATGGGGCTGAGATTCCCCAGGAACCGGAGAGGCCACCCAGAGACT
GGCCCTTGGAGAGCCCGAGGCCCTGGGAGAAGACGCCCGAGAGTTGGGTCCAGCCCCACGATCGGGG
AGCCAGCCCCAGAGACTCTCTGGAGAGAGCCCTGCACCCAGCGCAGTGGTCTCCTCCCGAACGGCGG
GGAGACAGCCCTGGCCCCCTTGGCCAGCCCCAAGAACGGGACGCTGGAACCCGGGACCGAGAGGAGA
GCCCCGAGACTGGGGGGCGCCGAGAGCCCGAGGGCTGGGAGGCTGGACTCGGGAGTGGGGCCGAG
CCCCAGTGGGCACGGGACGGCCCGCGCGGGCCCGGAAGCGGCGTGGACGCAAGGCCGATGGGT
AGACAACAGGAGCCGACCCAGCCGCCACCGCTGCCACCGCCACCGAGGCACAGCCGAGGAGGCTG
GAGCCAGCGCCCCGAGAGCCAGCCGAGGTGGCCCCGAGGGAGGCCGGGGCCCGAGACAGAGGG
CCGGCGGAGACACGGCACTCAGCGGAGACGGGGACCCCCCAAGCCCGAGAGGAAGGGCCCGAGATGCC
ACGACTATTCTTGGACTTGGGACCCCTCAGGGGAACAGCGAGCAGATCAAAGCCAGGCTCTCCCGCTC
TCGCTGGCGCTGCCGCCGCTCACGCTCACGCCATTCCCGGGCCGGGCCCGCGGGCCCGCTGGGAGG
GCGCGACGCCGGGGCGGCTGGCGGGGAGGCCGGCGGGGCGGGAGCGCCGGGGCCGGCGGAGGAGCGG
GGAGGACGAGGACGAGGACGAGGAGGAGGACGAGGAGGCGGGCGCGCCGGGCGGGCGGGCCGCGG
GGCCCCGGGAGGGCGGAGCAGCCCGGTGCCGTCTGGTGGAGCAGCGCCGACCGGACGCGGCCCGCC
CGCTGCGGGGCTGCTCAAGTCTCCGCGGGGGCCGACGAGCCAGAGGACAGCGAGCTGGAGAGGAAGCG
CAAGATGGTCTCTTCCAGGGGACGTACCGTCTACCTTTCCGACCAGGAGACGCCAACCAACGAGCTG
AGCGTCCAGGCCCCCCGAGGGGACACGGACCCGTAACGCCTCCAGCGCCCCGACACTCCCAACC
CCGCCACCCCGGAGATGGGTTTCCAGCAACGACAGCGCTTTGGAGGAGTTTTCGAGTGGGCGGAGGA
TTTCCCCCTCTCCCCCTCCAGGCCCGCGTGTGTTCTCCGCTTCTCCGTCTCGCTGCGCTGGAG
ACCCCGGGGCCACCCGCCGGGCCCGGACGCCCGGCCCGAGGCCCGTGGAGAAT

ACGCGTACGCGGGCCGCTCGAGCAGAACTCATCTCAGAAGAGGATCTGGCAGCAATGATATCCTGGATT
ACAAGGATGACGACGATAAGGTTTAA

Protein Sequence: >RC223140 representing NM_001080434
 Red=Cloning site Green=Tags(s)

```

MRQVLWLCNVCVTARETRHHLHPAILDKMPAGALILLAASVSASGLASPAHPDGFALGRAPLAPPYAV
VLISCSGLLAFIFLLLTCCKRGDVGFKEFENPEGEDCSGEYTPAEETSSSQSLPDVYILPLAEVSLP
MPAPQPSHSDMTTPLGLSRQHL SYLQEIGSGWFGKVI LGEIFSDYTPAQVVVKELRASAGPLEQRKFI SE
AQPYRSLQHPNVLQCLGLCVETL PFLIMEFCQLGDLKRYLRAQRPEGLSPELPPRDLRTLQRMGLEIA
RGLAHLHSHNYVHSDLALRNCLL TSDLTVRIGDYGLAHSNYKEDYYLTPERLWIPLRWAAPPELLGELHGT
FMVVDQSRESNIWSLGVTLWELFEFGAQP YRHL SDEEVLAFVVRQQHVKLARPKLPYADYWYDILQSC
WRPPAQRPSASDLQLQLTYLLSERPPRPPPPPPPRDGPFPWPWPPAHSAPRPGTSSPFLLDGFPDAD
PDDVLTVESSRGLNLECLWEKARRGAGRGGGAPAWQPASAPPAPHANPSNPFYEALSTPSVLPVISARS
PSVSSEYYIRLEEHSPPPELFPNDWDPLDPGVPAPQAPQAPSEVPQLVSETWASPLFPAPRPFPAQSSA
SGSFLLSGWDPEGRGAGETLAGDPAEVLGERGTAPWVEEEEEEEGSSPGEDSSSLGGPSRRGPLPCPL
CSREGACSCPLERGDVAVAGWGGHPALGCPHPEDDSSLRAERGLADLPMAPPASAPPEFLDPLMGAAA
PQYPGRGPPPPPPPPPPRAPADPAASPDPPSAVASPGSGLSSPGPKPGDSGYETETPTFSPGAFPGGG
AAEEEGVPRPRAPPEPPDPGAPRPPDPGPLPLPGPREKPTFVVQVSTEQLLMSLRDVTNRLLGEGKAT
ARETGRPKAGRPGNREKVPGLNRDPTVLGNGKQAPSLSPVNGVTVLENGDQRAPGIEEKAENGALGS
PEREEKVLENGELTPPRREEKALENGELRSPEAGEKVLVNGGLTPPKSEDKVSENGGLRFPNTERPPET
GPWRAPGPWEKTPESWGPAPTIGEPAPETSLERAPAPSAVVSSRNGGETAPGPLGAPKNGTLEPGTERR
APETGGAPRAPGAGRLDLGSGGRAPVGTGTAPGGGPGSGVDAKAGVWDNTRPQPPPPPLPPPPEAQRRL
EPAPRRARPEVAPEGEGAPDSRAGGDTALSGDGDPPKPERKGPMPRLFLDLGPPQGNSEQIKARL SRL
SLALPPLTLTPFPGPGRPPWEGADAGAAGGEAGGAGAPGPAEEDGEDEDEDEDEEAAAPGAAAGPR
GPGRARAAAPVPPVVSSADADAARPLRGLLKS PRGADEPEDSELERKRMVFSFHGDVTVYLFQDETPTNEL
SVQAPPEGDTDPSTPPAPPTPPHPATPGDGFPSNDSGFGGSFEWAEDFLLPPPGLCFSRF SVSPALE
TPGPPARAPDARAPGVEN
  
```

TRTRPLEQKLISEEDLAANDILDYKDDDDKV

Restriction Sites:

SgfI-MluI

Cloning Scheme:



ACCN: NM_001080434

ORF Size: 4467 bp

OTI Disclaimer: Due to the inherent nature of this plasmid, standard methods to replicate additional amounts of DNA in E. coli are highly likely to result in mutations and/or rearrangements. Therefore, OriGene does not guarantee the capability to replicate this plasmid DNA. Additional amounts of DNA can be purchased from OriGene with batch-specific, full-sequence verification at a reduced cost. Please contact our customer care team at custsupport@origene.com or by calling 301.340.3188 option 3 for pricing and delivery.

The molecular sequence of this clone aligns with the gene accession number as a point of reference only. However, individual transcript sequences of the same gene can differ through naturally occurring variations (e.g. polymorphisms), each with its own valid existence. This clone is substantially in agreement with the reference, but a complete review of all prevailing variants is recommended prior to use. [More info](#)

OTI Annotation: This clone was engineered to express the complete ORF with an expression tag. Expression varies depending on the nature of the gene.

Components: The ORF clone is ion-exchange column purified and shipped in a 2D barcoded Matrix tube containing 10ug of transfection-ready, dried plasmid DNA (reconstitute with 100 ul of water).

Reconstitution Method:

1. Centrifuge at 5,000xg for 5min.
2. Carefully open the tube and add 100ul of sterile water to dissolve the DNA.
3. Close the tube and incubate for 10 minutes at room temperature.
4. Briefly vortex the tube and then do a quick spin (less than 5000xg) to concentrate the liquid at the bottom.
5. Store the suspended plasmid at -20°C. The DNA is stable for at least one year from date of shipping when stored at -20°C.

RefSeq: [NM_001080434.1](#), [NP_001073903.1](#)

RefSeq Size: 4972 bp

RefSeq ORF: 4470 bp

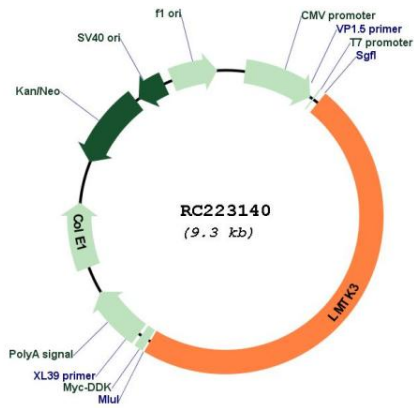
Locus ID: 114783

Cytogenetics: 19q13.33

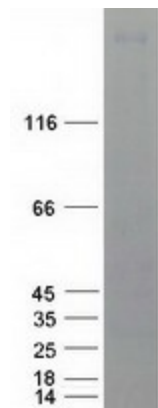
Protein Families: Druggable Genome, Protein Kinase, Transmembrane

MW: 156.9 kDa

Product images:



Circular map for RC223140



Coomassie blue staining of purified LMTK3 protein (Cat# [TP323140]). The protein was produced from HEK293T cells transfected with LMTK3 cDNA clone (Cat# RC223140) using MegaTran 2.0 (Cat# [TT210002]).