

Product datasheet for **RC223130**

CCDC9B (NM_207380) Human Tagged ORF Clone

Product data:

Product Type:	Expression Plasmids
Product Name:	CCDC9B (NM_207380) Human Tagged ORF Clone
Tag:	Myc-DDK
Symbol:	CCDC9B
Synonyms:	C15orf52
Mammalian Cell Selection:	Neomycin
Vector:	pCMV6-Entry (PS100001)
E. coli Selection:	Kanamycin (25 ug/mL)



[View online »](#)

ORF Nucleotide Sequence:

>RC223130 representing NM_207380
 Red=Cloning site Blue=ORF Green=Tags(s)

TTTTGTAATACGACTCACTATAGGGCGGCCGGAATTCGTCGACTGGATCCGGTACCGAGGAGATCTGCC
 GCC**CGGATCGCC**

ATGATCTCGTGTGCTGAGCAGCGAAGCCGGCAGGGAGAGGCCGGCAGAGGCCGGCTCCGGTGGCTCCAG
 CTTTCTCCCACTCTGGCTCCCCAGGGGCTGCTCTGGAATTCTCTCGGTGCCCGCGTTGCCATGCACTC
 GGCTGGAACCTCCAGAGCCGAGTCCCCATGAGCAGGCAGGAGAAGGACGACAGAGCTGGATCGGAGGATA
 GTTGCCCTGCGCAAGAAGAACCAGGCCCTTCTCCGACAGTACCAGGAGATCCAGGAGGACCGTCGGCAGG
 CAGAGCAGGGGGGATGGCTGTGACCACACCAGCACTCTCCAGCCTGATGGCCTCACCGTTACCATCAG
 CCAGGTTCCCGGTGAAAAGCGGGTGGTTAGCAGGAACTGGGCAAGGGGTACTTGTGGACCCAGAGTGACC
 AACGAGATGCTTGAGGATGAGGATGCTGAGGACCAGGGGGTACTTTCTGCTTAGGGGAGCTGGTGGAGC
 TGGCTGTGACCATGGAGAACAAGCAGAGGGCAAACGGATTGTAAGTAAAAGCCTACCAGAGCAAGGAA
 CCAAGGCATAGAGGGTACCTGGAGGGCTGTGACCCGAAGCCCCCACGCAGGTGGCCATCAGCTCA
 GATTCTGCACGGAAGGGTCTTGGGAGCCCTGGAGCCGGCCGGTGGGGGAGCCCCCGGAGGCGGGCTGGG
 ACTATGCCAGTGAAGCAGGAGCGGGAGCAGATCGACCTAGCCCGCCTCGCCCGGCACAGAGACGCACA
 GGGTGACTGGCGCCGCCGTCGGGACCTGGACAAGGCCAAGTCCACGCTACAGGACTGCAGCCAGCTGAGG
 GGAGAAGGCCCGCCAGGGCAGGCAGAGAAGGGTCCCAGGAGCCACCAGAAATACAGCCCCCACCAT
 TGCTCCCTGATGGAAAAGGTGCGGGCGGGCAAGCCAGCAGACCCCTCGGTGGCACCAGCCACAGGCAGCA
 AGCCCCGGGCAAGGAGAGGCTGACTGGCAGGGCCGAAGTGGGATATGAAGGAAGACAAGGAGGAGCTG
 GAAGGTCAGGAGGAAGCCAAAGCACCAGAGAGACTCCAGTGAGGAGGACAAGCCAGAAGCAGAGCG
 GGATGGAGCAGGGCCGACTGGGGAGCCCCCTGCAGCCAGCCAGCCCTGGCATCCCCAGAGGGGCGGAA
 GGGGAGTCAGTGGCTTCCACAGCCAGCTCAGTCCCCTGCTCTCCACAGGAGCCTGACTTGGCTCCTCTT
 GACCTCTCCCTAGGAGGGCTGGCATCCCTGGGCCAGGGAGAGCGGGTGTGTGCTCGGTCTGAGGCCTG
 GGGCCAGGAGAGCCCTGTGCTTGGCCAGAGGGCTCTAAGCAGCAGCCCTGGGGTGGAGCAATCACCA
 GGCTGAGCTGGAAGTACAGACTTGCCTGAGCCACAGAGAGGAGCAGGGCTCCCAGAGCCCGGAGAAGAC
 AGGTCTGGCAAGTCTGGGGCCAGCAGGGCCTGGCCCCGAGAAGCCGGCCACGAGAGGAGGCAGCCAAA
 GGTCGAGAGGCACAGCAGGTGTGAGGCGCAGGACAGGGCGCCCTGGCCCCGAGGAAGATGC

ACGCGTACGCGGCCGCTCGAGCAGAAACTCATCTCAGAAGAGGATCTGGCAGCAAATGATATCTGGATT
 ACAAGGATGACGACGATAAGGTTTAA

Protein Sequence:

>RC223130 representing NM_207380
 Red=Cloning site Green=Tags(s)

MISCAEQRSRQGEAGRGPAPVAPAFLLPLWLPKCSGILSVPVAVMHSAGTPRAESPMSRQEKDAELDRRI
 VALRKKNQALLRRYQEIQEDRRQAEQGGMAVTTTPALLQPDGLTVTISQVPEKRVVSRNWARGTGPRVT
 NEMLEDEDAEDHGGTFCLGELVELAVTMENKAEGKRIVSEKPTRARNQGIEGSPGGRVTRSPPTQVAISS
 DSARKGSWEPWSRPVGPPEAGWDYAQWKQEREQIDLARLARHRDAQGDWRRPWDLKAKSTLQDCSQR
 GEGPARAGSRRGPRSHQKLQPPPLLPDGKGRGQASRPSVAPATGSKARGKERLTGRARRWDMKEDKEEL
 EGQEGSQSTRETPEEEQAQKQSGMEQGRGLSAPAAASPALASPEGPKGESVASTASSVPCSPQEPDLAPL
 DLSLGGAGIPGPRESGCVLGLRPGAQESPVSWPEGSKQQPLGWSNHQAELEVQTCPEPQRGAGLPEPGE
 RSGKSGAQQLAPRSRPTRGGSQRSRGTAGVRRRTGRPGPAGRC

TRTRPLEQKLISEEDLAANDILDYKDDDDKV

Chromatograms:

https://cdn.origene.com/chromatograms/mk8045_f06.zip

Restriction Sites:

Sgfl-MluI

Cloning Scheme:


ACCN: NM_207380

ORF Size: 1602 bp

OTI Disclaimer: The molecular sequence of this clone aligns with the gene accession number as a point of reference only. However, individual transcript sequences of the same gene can differ through naturally occurring variations (e.g. polymorphisms), each with its own valid existence. This clone is substantially in agreement with the reference, but a complete review of all prevailing variants is recommended prior to use. [More info](#)

OTI Annotation: This clone was engineered to express the complete ORF with an expression tag. Expression varies depending on the nature of the gene.

Components: The ORF clone is ion-exchange column purified and shipped in a 2D barcoded Matrix tube containing 10ug of transfection-ready, dried plasmid DNA (reconstitute with 100 ul of water).

- Reconstitution Method:**
1. Centrifuge at 5,000xg for 5min.
 2. Carefully open the tube and add 100ul of sterile water to dissolve the DNA.
 3. Close the tube and incubate for 10 minutes at room temperature.
 4. Briefly vortex the tube and then do a quick spin (less than 5000xg) to concentrate the liquid at the bottom.
 5. Store the suspended plasmid at -20°C. The DNA is stable for at least one year from date of shipping when stored at -20°C.

RefSeq: [NM_207380.2](#), [NP_997263.2](#)

RefSeq Size: 5344 bp

RefSeq ORF: 1605 bp

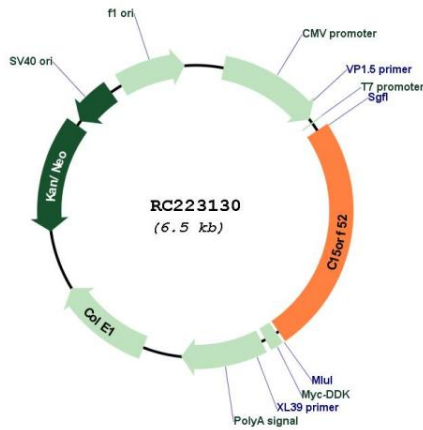
Locus ID: 388115

UniProt ID: [Q6ZUT6](#)

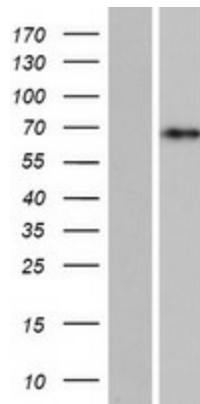
Cytogenetics: 15q15.1

MW: 57.1 kDa

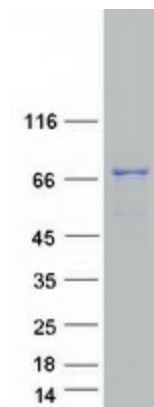
Product images:



Circular map for RC223130



Western blot validation of overexpression lysate (Cat# [LY403997]) using anti-DDK antibody (Cat# [TA50011-100]). Left: Cell lysates from untransfected HEK293T cells; Right: Cell lysates from HEK293T cells transfected with RC223130 using transfection reagent MegaTran 2.0 (Cat# [TT210002]).



Coomassie blue staining of purified CCDC9B protein (Cat# [TP323130]). The protein was produced from HEK293T cells transfected with CCDC9B cDNA clone (Cat# RC223130) using MegaTran 2.0 (Cat# [TT210002]).