

Product datasheet for **RC223125**

PRAMEF20 (NM_001099852) Human Tagged ORF Clone

Product data:

Product Type:	Expression Plasmids
Product Name:	PRAMEF20 (NM_001099852) Human Tagged ORF Clone
Tag:	Myc-DDK
Symbol:	PRAMEF20
Synonyms:	PRAMEF21
Mammalian Cell Selection:	Neomycin
Vector:	pCMV6-Entry (PS100001)
E. coli Selection:	Kanamycin (25 ug/mL)



[View online »](#)

ORF Nucleotide Sequence:

>RC223125 representing NM_001099852
 Red=Cloning site Blue=ORF Green=Tags(s)

TTTTGTAATACGACTCACTATAGGGCGGCCGGAATTCGTCGACTGGATCCGGTACCGAGGAGATCTGCC
 GCC**CGGATCGCC**

ATGAGCATCCGGACTCCACCCAGACTCCTGGAGCTGGCGGGCGGAGCCTGCTGAGGGACGAGGCCCTTGG
 CCATCTCCACCCTGGAGGAGCTGCCACGGAACTTTTCCCCATTGTTTCATGGAGGCCTTCAGCAGGAG
 ACACTGTGAGGCCTGAAGCTGATGGTGCAGGCCTGGCCTTTCCTCCGCCTTCTCTGGGTCTCTGATG
 AAAAGGCCTTGCCAGAGACCTTCAAGCTGTGCTCGATGGGCTTATGCACTGCTTACCCACAGGGTTC
 GTCTCAGGAGGTGAAACTTCAAGTGTGGATTTACAGGATGTCAGTGAGAACTTCTGGATGGTTTGGTC
 TGAAGCCATGGCCGTAGGTGCTTACCAAATGCCATGATGAACAGAAAACAGTGCAGGACTGTCCAAGG
 ATGAGAGGACAGCAGCCCTTACTGTGTTTCATAGACCTTTCCTCAAGAACAGGACTCTGGATGAATACT
 TCACCTGCCTCTTCTATGGGTCAAGCAGAGGGAAGGTTTAGTACACCTGTGCTGTAAGAAGCTGAAAT
 GTTGGGAATGCTCTCCACAATATCAGAAACATCTGAAAACAGTCAACCTAGACTGTATCCAGGAGGTG
 GAAGTGAATTGCAATTGGACACTGCCCGTCTGGCAGAGTTTACCCCATACCTCGCCAGATGAGGAATC
 TTCGGAAGCTCGTTCTCTGACATAGATTCTCGCTACATTTCCCGAGAGCAGAAGAAGGAGTTTGTAC
 CCAGTTCACCACTCAGTTCCTCAAGCTGCGCTGCCTCCAAAAGCTTTATATGAACTCTGTTTCTTTCCTC
 GAAGGCCACCTGGACCAGATGCTCAGCTGTCTAAAGACCTCGTTAAACATCTCGCAATAACTAAGTGTG
 TGCTTTTGGAAATCAGACTTGAAGCATCTGTCCAAGTACCCGAGCATTGGTCAACTAAAGACCCTGGACCT
 GAGTGGCACCAGACTGGCCAATTCAGCCTTGTGCCGCTCCAAGTCTCCTAGAAAAAGTTGCAGCCACC
 CTTGAGTACCTGGACTTAGATGACTGTGGCATCGTAGACTCCCAAGTCAACGCCATCTGCCTGCCCTGA
 GCCGCTGCTTTGAGCTCACCACCTCAGCTTCCGTGAAATCCCATCTCCACGGCCACCTGGAGAACCT
 GCTGTGCCACACAATCAGACTCAACAACCTATGCCTGGAGCTGTATCCTGCCCGCGGGAGATTATGAT
 GTTCGTGGTATCGTCTGCCGGAGCAGATTTGCCAACTTGGGGCTGAGCTGATGGGGAGAGTGAGGGCCT
 TAAGGGAGCCGAGAGGATCTTGTCTGTACCGACTACTGCCCTCAGTGTGGCAACAGGTCACTTTACGA
 CCTGGAGGTAGATCGGTGTTGCTGT

ACGCGTACGCGGCCGCTCGAGCAGAAACTCATCTCAGAAGAGGATCTGGCAGCAATGATATCCTGGATT
 ACAAGGATGACGACGATAAGGTTTAA

Protein Sequence:

>RC223125 representing NM_001099852
 Red=Cloning site Green=Tags(s)

MSIRTPPRLLELAGRSLRDEALAISTLEELPTLFPPLFMEAFSRRHCEALKLMVQAWPFLRLPLGLSM
 KRPCPETFQAVLDGLDALLTHRVRLLRWKLVLDLQDVSENFWMVWSEAMARRCLPNAMNRPVQDCPR
 MRGQQPLTVFIDLCLKNRTLDEYFTCLFLWVKQREGLVHLCKKLMKMLGMLFHNIRNLIKTVNLDCIQEV
 EVNCNWTLPVLAEFTPYLGQMRNLRKLVLSIDSRYSISPEQKKEFVTQFTTQFLKRLQKLYMNSVSFL
 EGHLDQMLSCLKTSLNILAITNCVLLSCLKHLKSKYPSIGQLKTLDL SGTRLANFSLVPLQVLEKVAAT
 LEYLDLDDCGIVDSQVNAIIPALSRFELTTFSFRGNPISTATLENLLCHTIRLNNLCLELYPAPRESYD
 VRGIVCRSRAQLGAELMGRVRALREPERILFCTDYCPQCGNRSLYDLEVDRECC

TRTRPLEQKLISEEDLAANDILDYKDDDDKV

Chromatograms:

https://cdn.origene.com/chromatograms/mk8045_f08.zip

Restriction Sites:

Sgfl-MluI

Cloning Scheme:


ACCN: NM_001099852

ORF Size: 1425 bp

OTI Disclaimer: The molecular sequence of this clone aligns with the gene accession number as a point of reference only. However, individual transcript sequences of the same gene can differ through naturally occurring variations (e.g. polymorphisms), each with its own valid existence. This clone is substantially in agreement with the reference, but a complete review of all prevailing variants is recommended prior to use. [More info](#)

OTI Annotation: This clone was engineered to express the complete ORF with an expression tag. Expression varies depending on the nature of the gene.

Components: The ORF clone is ion-exchange column purified and shipped in a 2D barcoded Matrix tube containing 10ug of transfection-ready, dried plasmid DNA (reconstitute with 100 ul of water).

Reconstitution Method:

1. Centrifuge at 5,000xg for 5min.
2. Carefully open the tube and add 100ul of sterile water to dissolve the DNA.
3. Close the tube and incubate for 10 minutes at room temperature.
4. Briefly vortex the tube and then do a quick spin (less than 5000xg) to concentrate the liquid at the bottom.
5. Store the suspended plasmid at -20°C. The DNA is stable for at least one year from date of shipping when stored at -20°C.

RefSeq: [NM_001099852.1](#), [NP_001093322.1](#)

RefSeq Size: 1597 bp

RefSeq ORF: 1428 bp

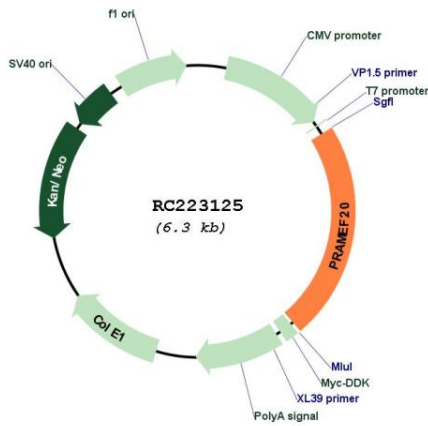
Locus ID: 645425

UniProt ID: [Q5VT98](#)

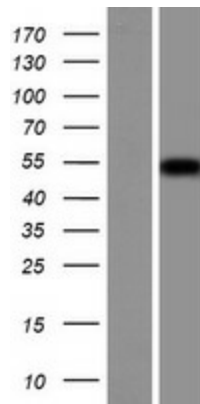
Cytogenetics: 1p36.21

MW: 54.6 kDa

Product images:



Circular map for RC223125



Western blot validation of overexpression lysate (Cat# [LY420542]) using anti-DDK antibody (Cat# [TA50011-100]). Left: Cell lysates from untransfected HEK293T cells; Right: Cell lysates from HEK293T cells transfected with RC223125 using transfection reagent MegaTran 2.0 (Cat# [TT210002]).