

## Product datasheet for **RC223120**

### **EVI5 (NM\_005665) Human Tagged ORF Clone**

#### **Product data:**

Product Type:	Expression Plasmids
Product Name:	EVI5 (NM_005665) Human Tagged ORF Clone
Tag:	Myc-DDK
Symbol:	EVI5
Synonyms:	EVI-5; NB4S
Mammalian Cell Selection:	Neomycin
Vector:	pCMV6-Entry (PS100001)
E. coli Selection:	Kanamycin (25 ug/mL)



[View online »](#)

**ORF Nucleotide Sequence:**

>RC223120 representing NM\_005665  
 Red=Cloning site Blue=ORF Green=Tags(s)

TTTTGTAATACGACTCACTATAGGGCGGCCGGAATTCGTGACTGGATCCGGTACCGAGGAGATCTGCC  
 GCC**CGCATCGCC**

ATGGTTACCAACAAAATGACTGCTGCCTTTAGAAACCCTAGTGGGAAACAGGTGGCGACAGACAAAGTTG  
 CAGAAAAGCTGAGCTCTACTCTCATGGGTGAAGAACACAGTATCGCATACAGTCAGTCAGATGGCCAG  
 TCAGGTGGCAAGTCCATCTACTTCAATTACATACCACATCCTCATCTACCACACTATCAACACCAGCCCTT  
 TCACCATCTTCCCATCACAGTTGAGTCCAGACGACTTAGAACTCCTGGCTAAACTGGAAGAACAGAATA  
 GATTGTTAGAAACGGATAGTAAGTCTTTAAGATCTGTAATGGGTCAAGAAGAAACAGTGCTCTTCTCT  
 TGTGTCGAGTTTATCAGCCTCTAGCAACCTCAGTCACCTTGAAGAAGATTCTTGGATTCTTTGGGAAGA  
 ATTGTTAATGAATGGGAAGATGTACGAAAAAGAAAGCAAGTTAAGGAACCTGTTTATAAAGGGA  
 TACCCCATCACTTAGAGCAATAGTTTGGCAACTTTTATGCAGTGCACAAAGTATGCCAATTAAGGATCA  
 GTATTCAGAACTCCTGAAAATGACCTCGCCTTGTGAAAAATTGATCCGAAGGGACATTGCTAGAACTTAC  
 CCTGAACACAACCTTTTTAAGGAAAAAGATAGCCTTGGACAGGAGTTTTATTTAATGTAATGAAGGCTT  
 ACTCTTTAGTAGATCGTGAGGTTGGTACTGTCAAGGAAGTGCTTTTATAGTTGGATTGTTGCTTATGCA  
 GATGCCAGAAGAAGAAGCTTTCTGTGATTTGTTAAATTAATGCAAGATTATAGACTTCGTGAACCTTTT  
 AAACCAAGTATGGCAGAAATGGGCCCTTGTATGTACCAGTTTGAATGTATGATACAGGAGCATCTCCAG  
 AGCTCTTTGTACATTTTCAATCTCAGAGTTTTCATACCTCAATGTATGCATCATCCTGGTTTCTGACTAT  
 CTTTCTTACAACCTTTCCACTACCAGTTGCAACAAGGATATTTGATATCTTTATGTCTGAGGGTTAGAA  
 ATAGTGTTCGTGAGGATTAGCACTTCTCAGATGAATCAGGCAGAAGTATGCAACTTGACATGGAAG  
 GGATGTTACAGCACTTTCAAAGGTCATTCCACATCAGTTTGTGTTGATGGTGTCCAGACAAGCTAATCCAAGC  
 AGCTTACCAAGTCAAATACAATTCAAAAAATGAAAAAGCTTGAAGAAGAAATACACTACAATAAAAAACG  
 AAAGAAATGGAAGAGCAAGTTGAAATTAAGGTTACGCACAGAAAAATAGACTTTTAAAAACGCGCATCG  
 AGACATTAGAAAAACATAAATGCAGTTCCAACACAACGAAGATTTTGTCTACAGCTAGAGAAGGAATT  
 GGTCCAAGCCGACTGAGTGAAGCTGAGTCTCAGTGTGCATTAAGAGATGCAGGATAAAGTCTTGGAT  
 ATAGAGAAGAGGAATAACTCCCTCCTGATGAGAATAATATTGCAAGGCTTCCAGGAAGAACTCATTGCTG  
 TGAACCTTAGAGAAGCAGAAGCCATTATGGGTTTGAAGAAGTATAGACAGCAAGTCAAGGATTTAGAGGA  
 AACTGGCAGCGCCACTTAGCTCGTACTACTGGGAGATGGAAAGACCCACCCAAGAAAAATGCTATGAAT  
 GAGTTACAGGATGAAGTATGACCATTCGACTTAGAGAAGCTGAAACACAAGCAGAAATAAGAGAAATAA  
 AACAAAGGATGATGGAAATGGAAACACAGAACCAGATCAATAGTAACCATCTTGAAGAGCAGAACAAGA  
 GGTGATTAGCCTACAGGAGAAAGTGCAGTATCTTTCTGCACAGAAACAAAGGACTCCTTACTCAATTAAGT  
 GAAGCAAAGCGTAAACAAGCAGAGATTGAATGCAAGAATAAGGAAGAAGTATGGCTGTGAGGCTTCGGG  
 AAGCAGATAGCATAGCTGCTGTGGCTGAACTACGACAACATTCGCTGAGCTTGAATCCAGAAAGAAGA  
 AGGAAAGCTTCAAGGACAGCTTAAACAAGTCTGATTCTAACCAGTATATTGGGAACTGAAAGATCAGATA  
 GCAGAGCTGAATCATGAGCTCAGGTGCCTAAAAGGCCAGAGGGGCTTCTCAGGCCAACCTCCTTTTATGA  
 TAATTCCTTACAGGAACTGGTGTGGTTTTCTTTGCACGAAAAATCTGGCTCGATGTCTTTGGACCCC  
 GCAGTGGCAGATGGTAGTGAGAGCGAAACAGAAGACAGTGTGCTGGAGACCAGAGAGCAACCAAGTGG  
 TTCAAAGGAGCGGCCCCCGAGAAGAAGAGAGTGTATTCAACCACTGTC

**ACGCGT**ACGCGGCCGCTCGAGCAGAAACTCATCTCAGAAGAGGATCTGGCAGCAATGATATCCTGGATT  
 ACAAGGATGACGACGATAAGGTTTAA

**Protein Sequence:** >RC223120 representing NM\_005665  
 Red=Cloning site Green=Tags(s)

MVTNKMTAAFRNPSGKQVATDKVAEKLSSSTLSWVKNTVSHTVSQMASQVSPSTSLHTTSSSTLSTPAL  
 SPSSPSQLSPDDLELLAKLEEQRNRLLETDSKSLRSVNGSRRNSGSSLVSSSSASSNLSHLEEDSWILWGR  
 IVNEWEDVRKKKEKQVKELVHKGIPHHFRAIVWQLLCSAQSMPIKDQYSELLKMTSPCEKLIIRDIARTY  
 PEHNFFKEKDSLQGEVLFNVMKAYSLVDREVGVCQGSFIVGLLLMQMPEEEAFVFKLMQDYRLRELF  
 KPMAELGLCMYQFECMIQEHLPEL FVHFQSQSFHTSMYASSWFLTIFLTTFFPLPVATRIFDIFMSEGLE  
 IVFRVGLALLQMNQAEMLQDMEGMLQHFQKVIPHQFDGVPDKLIQAAYQVKYNSKMKKLEKEYTTIKT  
 KEMEEQVEIKRLRTENRLLKQRIETLEKHKCSSNYNEFVLQLEKELVQARLSEAESQCALKEMQDKVLD  
 IEKRNNLDPDENNIARLQEELIAVKLREAEAIMGLKELRQVVDLEEHWRHLARTTGRWKDPPKKNAMN  
 ELQDELMTIRLREAEQAEIREIKQRMEMETQNQINSNHLRRAEQEVISLQEKVQYLSAQNKGLLTQLS  
 EAKRKQAEIECKNKEEVMVRLREADSIAAVAELRQHIAELEIQKEEGKLGQLNKSDSNQYIGELKDQI  
 AELNHELRLCKGQRGFSGQPPFDGIHIVNHLIGDDESFHSSDEDFIDNSLQETGVGFPLHGKSGSMSLDP  
 AVADGSESETEDSVLETRESNQVQKERPPRRRESYSTTV

TRTRPLEQKLISEEDLAANDILDYKDDDDKV

**Chromatograms:** [https://cdn.origene.com/chromatograms/mk6164\\_e06.zip](https://cdn.origene.com/chromatograms/mk6164_e06.zip)

**Restriction Sites:** Sgfl-Mlul

**Cloning Scheme:**


**ACCN:** NM\_005665

**ORF Size:** 2430 bp

**OTI Disclaimer:** The molecular sequence of this clone aligns with the gene accession number as a point of reference only. However, individual transcript sequences of the same gene can differ through naturally occurring variations (e.g. polymorphisms), each with its own valid existence. This clone is substantially in agreement with the reference, but a complete review of all prevailing variants is recommended prior to use. [More info](#)

**OTI Annotation:** This clone was engineered to express the complete ORF with an expression tag. Expression varies depending on the nature of the gene.

**Components:** The ORF clone is ion-exchange column purified and shipped in a 2D barcoded Matrix tube containing 10ug of transfection-ready, dried plasmid DNA (reconstitute with 100 ul of water).

**Reconstitution Method:**

1. Centrifuge at 5,000xg for 5min.
2. Carefully open the tube and add 100ul of sterile water to dissolve the DNA.
3. Close the tube and incubate for 10 minutes at room temperature.
4. Briefly vortex the tube and then do a quick spin (less than 5000xg) to concentrate the liquid at the bottom.
5. Store the suspended plasmid at -20°C. The DNA is stable for at least one year from date of shipping when stored at -20°C.

**RefSeq:** [NM\\_005665.6](#)

**RefSeq Size:** 7403 bp

**RefSeq ORF:** 2433 bp

**Locus ID:** 7813

**UniProt ID:** [O60447](#)

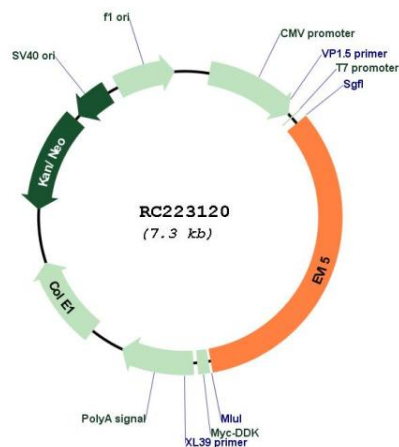
**Cytogenetics:** 1p22.1

**Domains:** TBC

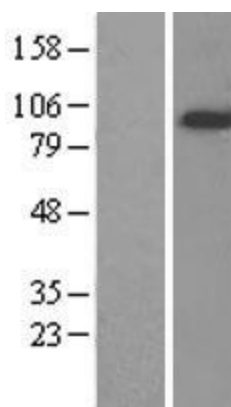
**MW:** 92.8 kDa

**Gene Summary:** Functions as a regulator of cell cycle progression by stabilizing the FBXO5 protein and promoting cyclin-A accumulation during interphase. May play a role in cytokinesis. [UniProtKB/Swiss-Prot Function]

### Product images:



Circular map for RC223120



Western blot validation of overexpression lysate (Cat# [LY401728]) using anti-DDK antibody (Cat# [TA50011-100]). Left: Cell lysates from untransfected HEK293T cells; Right: Cell lysates from HEK293T cells transfected with RC223120 using transfection reagent MegaTran 2.0 (Cat# [TT210002]).