

## Product datasheet for **RC223118**

### WWP2 (NM\_007014) Human Tagged ORF Clone

#### Product data:

Product Type:	Expression Plasmids
Product Name:	WWP2 (NM_007014) Human Tagged ORF Clone
Tag:	Myc-DDK
Symbol:	WWP2
Synonyms:	AIP2; WWp2-like
Mammalian Cell Selection:	Neomycin
Vector:	pCMV6-Entry (PS100001)
E. coli Selection:	Kanamycin (25 ug/mL)



[View online »](#)

**ORF Nucleotide  
Sequence:**

>RC223118 representing NM\_007014  
 Red=Cloning site Blue=ORF Green=Tags(s)

TTTTGTAATACGACTCACTATAGGGCGGCCGGGAATTCGTCGACTGGATCCGGTACCGAGGAGATCTGCC  
 GCC**CGGATCGCC**

ATGGCATCTGCCAGCTCTAGCCGGCAGGAGTGGCCCTGCCTTTTGAGAAGTCTCAGCTCACTTTGAAAG  
 TGGTGTCCGCAAAGCCCAAGGTGATAATCGTCAACCTCGAATTAACCTCTACGTGGAGGTGGCGGTGGA  
 TGGACTCCCCAGTGAGACCAAGAAGACTGGGAAGCGCATTGGGAGCTCTGAGCTTCTCTGGAATGAGATC  
 ATCATTGTAATGTCACGGCACAGAGTCAATTTAGATTTAAAGGTCTGGAGCTGCCATACCTTGAGAAATG  
 AACTGCTAGGCACCGCATCTGTCAACCTCTCCAACGTCTTGAAGAACAATGGGGGCAAAATGGAGAACAT  
 GCAGCTGACCCTGAACCTGCAGACGGAGAACAAGGCAGCGTTGTCTCAGGCGGAGAGCTGACAATTTTC  
 CTGGACGGGCCAACTGTTGATCTGGGAAATGTGCCTAATGGCAGTGCCCTGACAGATGGATCACAGCTGC  
 CTTGAGAGACTCCAGTGAACAGCAGTAGCTCCAGAGAACCAGCCAGCCCCAGCACAAACTGCTT  
 TGGTGGAAAGATCCCGGACGCACAGACATTCGGGTGCTTCAGCCAGAACAACCCAGCAACCGGCGAGCAA  
 AGCCCCGGTGTCTCGGAGCCGGCACCGCCAGCCCGTCAAGAACTCAGGCCACAGTGGCTTGGCCAATGGCA  
 CAGTGAATGATGAACCCACAACAGCCACTGATCCCGAAGAACCTTCCGTTGTTGGTGTGACGTCCCCACC  
 TGCTGCACCTTGAGTGTGACCCCGAATCCCAACAGCACTTCTCTCCCTGCCACAGCCACACCGGTGAA  
 GGAGAGGAACCCAGCACTTCGGGTACACAGCAGCTCCCAGCGGTGCCAGGCCCGGACGCTCTGCCTG  
 CTGGATGGGAACAGCGAGAGCTGCCCAACGGACGTGTCTATTATGTTGACCACAATACCAAGACCACCAC  
 CTGGGAGCGGCCCTTCTCCAGGCTGGGAAAAACGCACAGATCCCCGAGGCAGGTTTTACTATGTGGAT  
 CACAATACTCGGACCACCCTGGCAGCGTCCGACCGGAGTACGTGCGCAACTATGAGCAGTGGCAGT  
 CGCAGCGGAATCAGCTCCAGGGGCCATGCAGCACTTCAGCCAAAGATTCTCTACCAGTCTTCGATGTC  
 TTCGACTGACCATGATCCCTGGGCCCTCCCTCCTGGCTGGGAGAAAAGACAGGACAATGGACGGGTG  
 TATTACGTGAACCATAACACTCGCACGACCCAGTGGGAGGATCCCGGACCCAGGGGATGATCCAGGAAC  
 CAGCTCTGCCCCAGGATGGGAGATGAAATACACCAGCGAGGGGGTGGGATACTTTGTGGACCACAATAC  
 CCGCACCACCACCTTAAAGGATCCTCGCCCGGGTTTGTGAGTGGGGACGAAGCAAGGTTCCCTGGTGT  
 TATGACCCGAGTTTTCGGTGGAAGTATCACCAGTTCGTTTCTCTGCCATTCAAATGCCCTACCTAGCC  
 ACGTGAAGATCAGCGTTTCCAGGCAGACGCTTTTCAAGATTCTTCCAACAGATCATGAACATGAAACC  
 CTATGACCTGCGCCCGGCTCTACATCATCATGCGTGGCGAGGAGGGCCTGGACTATGGGGGCATCGCC  
 AGAGAGTGGTTTTCTCTGTCTCACGAGGTGCTCAACCCTATGTATTGTTATTTGAATATGCCGGAA  
 AGAACAATTACTGCCTGCAGATCAACCCCGCTCCTCCATCAACCCGGACACCTCACCTACTTTGCTT  
 TATAGGCAGATTCATCGCCATGGCGCTGTACCATGGAAAGTTCATCGACACGGGCTTACCCCTCCCTTTC  
 TACAAGCGGATGCTCAATAAGAGACCAACCCTGAAAGACCTGGAGTCCATTGACCCTGAGTTCTACAAC  
 CCATTGTCTGGATCAAAGAGAACAACCTGGAAGAATGTGGCTGGAGCTGTACTTCATCCAGGACATGGA  
 GATACTGGGAAGGTGACGACCCACGAGCTGAAGGAGGGCGGAGAGCATCCGGGTACCGGAGGAGAAC  
 AAGGAAGAGTACATCATGCTGCTGACTGACTGGCGTTTACCCGAGGCGTGAAGAGCAGACCAAGCCT  
 TCCTGGATGGCTTCAACGAGGTGGCCCCGCTGGAGTGGCTGCGCTACTTTGACGAGAAAGAGCTGGAGCT  
 GATGCTGTGCGGCATGCAGGAGATAGACATGAGCGACTGGCAGAAGAGCACCATCTACCGCACTACACC  
 AAGAACAGCAAGCAGATCCAGTGGTTCTGGCAGTGGTGAAGGAGATGGACAACGAGAAGAGGATCCGGC  
 TGCTGCAGTTTGTACCCGTACCTGCCCGCTGCCCGTGGGGGATTTGCCGAACCTCATCGGTAGCAACGG  
 ACCACAGAAGTTTTGCATTGACAAAGTTGGCAAGGAAACCTGGCTGCCAGAAGCCACACCTGCTTCAAC  
 CGTCTGGATCTTCCACCCTACAAGAGCTACGAACAGCTGAGAGAGAAGCTGCTGTATGCCATTGAGGAGA  
 CCGAGGGCTTTGGACAGGAG

**ACGCGT**ACGCGGCCGCTCGAGCAGAAACTCATCTCAGAAGAGGATCTGGCAGCAATGATATCCTGGATT  
 ACAAGGATGACGACGATAAGGTTTAA

Protein Sequence: >RC223118 representing NM\_007014  
 Red=Cloning site Green=Tags(s)

MASASSSRAGVALPFEKSQLTLKVVSAKPKVHNRQPRINSYVEVAVDGLPSETKKTGKRIGSELLWNEI  
 IILNVTAQSHLDLKVWSCHTLRNELLGTASVNL SNVLKNNGGKMEMNQLTLNLQ TENKGSVVSGGELTIF  
 LDGPTVDLGNVPNGSAL TDGSQLPSRDSSGTAVAPENRHQPPSTNCFGGRSRTHRHSGASARTTPATGEQ  
 SPGARSRHRQPVKNSGHSGLANGTVNDEPTTATDPEEPSVVGVTSPPAAPLSVTPNPNTTSLPAPATPAE  
 GEEPSTSGTQQLPAAAQAPDALPAGWEQREL PNGRVYYVDHNTKTTTWERPLPPGW EKRTDPRGRFYVD  
 HNTRTTTWRPTAEYVRNYEQWQSQRNQLQGAMQHFSQRFLYQSSSASTDHDPLGPLPPGW EKRDNGRV  
 YVYHNTRTTQWEDPRTQGMIEPALPPGWEMKYTSEGVRYFVDHNTRTTTFKDRP RPFESGTKQGSPGA  
 YDRSFRWKYHQFRFLCHSNALPSHVKISVSRQTLFEDSFQQIMNMKPYDLRRLYIIMRGE EGLDYGGIA  
 REWFFLLSHEVLNPMYCLFEYAGKNNYCLQINPASSINPDHLYFRFIGRFIAMALYHGKFIDTGF TLPF  
 YKRLNKRPTLKDLESIDPEFYNSIVWIKENNEEGLLEYFIQDMEILGKVTTHLKEGGESIRVTEEN  
 KEEYIMLLTDWRFTRGV EEQTKAFLDGFNEVAPLEWLR YFDEKELEMLCGMQEIDMSD WQKSTIYRHYT  
 KNSKQIQWFVQVKEMDNEKRIRLLQFVTGT CRLPVGGFAELIGSNGPQKFCIDKVGKETW LPRSHTCFN  
 RLDLPPYKSYEQLREKLLYAIEETEFGGQE

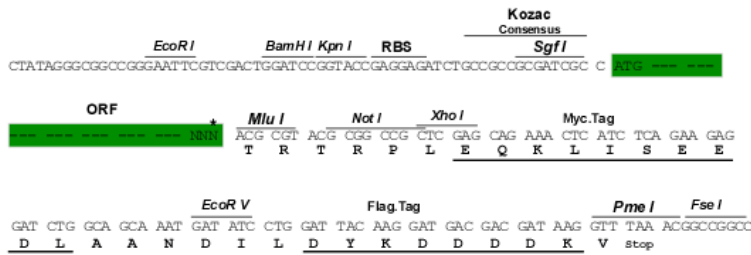
TRTRPLEQKLISEEDLAANDILDYKDDDDKV

Chromatograms: [https://cdn.origene.com/chromatograms/mk6170\\_c02.zip](https://cdn.origene.com/chromatograms/mk6170_c02.zip)

Restriction Sites: SgfI-MluI

Cloning Scheme:

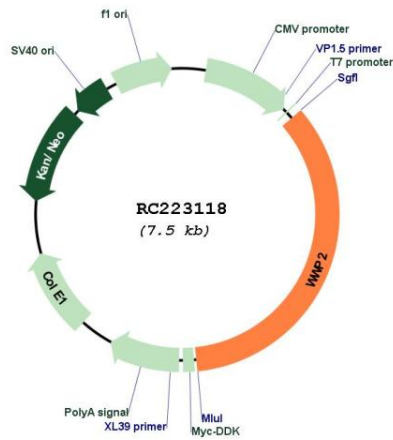
Cloning sites used for ORF Shuttling:



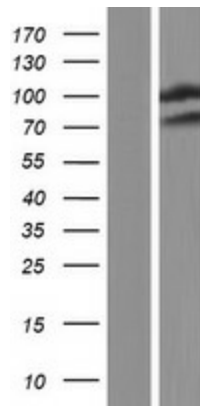
\* The last codon before the Stop codon of the ORF

<b>ACCN:</b>	NM_007014
<b>ORF Size:</b>	2610 bp
<b>OTI Disclaimer:</b>	The molecular sequence of this clone aligns with the gene accession number as a point of reference only. However, individual transcript sequences of the same gene can differ through naturally occurring variations (e.g. polymorphisms), each with its own valid existence. This clone is substantially in agreement with the reference, but a complete review of all prevailing variants is recommended prior to use. <a href="#">More info</a>
<b>OTI Annotation:</b>	This clone was engineered to express the complete ORF with an expression tag. Expression varies depending on the nature of the gene.
<b>Components:</b>	The ORF clone is ion-exchange column purified and shipped in a 2D barcoded Matrix tube containing 10ug of transfection-ready, dried plasmid DNA (reconstitute with 100 ul of water).
<b>Reconstitution Method:</b>	<ol style="list-style-type: none"><li>1. Centrifuge at 5,000xg for 5min.</li><li>2. Carefully open the tube and add 100ul of sterile water to dissolve the DNA.</li><li>3. Close the tube and incubate for 10 minutes at room temperature.</li><li>4. Briefly vortex the tube and then do a quick spin (less than 5000xg) to concentrate the liquid at the bottom.</li><li>5. Store the suspended plasmid at -20°C. The DNA is stable for at least one year from date of shipping when stored at -20°C.</li></ol>
<b>RefSeq:</b>	<a href="#">NM_007014.5</a>
<b>RefSeq Size:</b>	4527 bp
<b>RefSeq ORF:</b>	2613 bp
<b>Locus ID:</b>	11060
<b>UniProt ID:</b>	<a href="#">O00308</a>
<b>Cytogenetics:</b>	16q22.1
<b>Domains:</b>	C2, HECT, WW
<b>Protein Families:</b>	Druggable Genome
<b>Protein Pathways:</b>	Ubiquitin mediated proteolysis
<b>MW:</b>	98.7 kDa
<b>Gene Summary:</b>	This gene encodes a member of the Nedd4 family of E3 ligases, which play an important role in protein ubiquitination. The encoded protein contains four WW domains and may play a role in multiple processes including chondrogenesis and the regulation of oncogenic signaling pathways via interactions with Smad proteins and the tumor suppressor PTEN. Alternatively spliced transcript variants encoding multiple isoforms have been observed for this gene, and a pseudogene of this gene is located on the long arm of chromosome 10. [provided by RefSeq, Jul 2012]

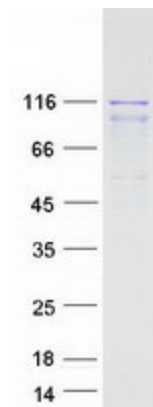
Product images:



Circular map for RC223118



Western blot validation of overexpression lysate (Cat# [LY402076]) using anti-DDK antibody (Cat# [TA50011-100]). Left: Cell lysates from untransfected HEK293T cells; Right: Cell lysates from HEK293T cells transfected with RC223118 using transfection reagent MegaTran 2.0 (Cat# [TT210002]).



Coomassie blue staining of purified WWP2 protein (Cat# [TP323118]). The protein was produced from HEK293T cells transfected with WWP2 cDNA clone (Cat# RC223118) using MegaTran 2.0 (Cat# [TT210002]).