

Product datasheet for RC223115

TNKS1BP1 (NM_033396) Human Tagged ORF Clone

Product data:

Product Type:	Expression Plasmids
Product Name:	TNKS1BP1 (NM_033396) Human Tagged ORF Clone
Tag:	Myc-DDK
Symbol:	TNKS1BP1
Synonyms:	TAB182
Mammalian Cell Selection:	Neomycin
Vector:	pCMV6-Entry (PS100001)
E. coli Selection:	Kanamycin (25 ug/mL)
ORF Nucleotide Sequence:	>RC223115 representing NM_033396 Red=Cloning site Blue=ORF Green=Tags(s)

TTTTGTAATACGACTCACTATAGGGCGGCCGGAATTCGTCGACTGGATCCGGTACCGAGGAGATCTGCC
GCCCGCATCGCC

ATGAAAGTGTCTACTCTCAGGAAAGCTCAGCCATGGCTTCCCCACTGCCCCGGGAGATGGAGGAGGAGC
TGGTGCCTACTGGCTCTGAGCCAGGTGACACTCGGGCCAAACCCCTGTCAAGCCAAACCCGGGCCCT
GCCTGCCAAGCCAGCCCTGCCTGCCAAACCCAGCCTGCTGGTGCCTGTTGGGCTCGGCCTCCCCGGGT
CCCCTGGCTGAGTTGCCTTCTGCCAGGAAGATGAACATGCTGGCAGGACCCAGCCCTATGGTGGCAGCA
AGCGCCCCCTTCCCTTTGCACCAAGGCCTGCGGTTGAGGCCTCCACTGGAGGAGAAGCCACCAAGAGAC
TGGGAAAGAGGAGGCTGGGAAAGAGGAGCCACCCCTTTGACACCCCGAGCTCGATGTGCAGCCCGAGGG
GGTGTACGGAAGGCCCTGCCCTTTCCGCCAGCCTCAGAGCGCTTCGCGGCCACCACGGTGAAGAGA
TCCTGGCCAAGATGGAGCAGCCTCGGAAGGAGTCTTGGCCAGCCCCGACCGCTGTGGGTTCCCGCT
CACCTTAACACGATGGCAGCTCGGATATGGCCCCAGGACCTATGGCAGCAGCAGTGTCCAGGGAT
GAGGATGGCAGCACCTCTCAGGGGATGGTCCAGGAGGGGCCAGTAAAGTCTCCAGCAGAGTGGCCGG
AAGAGCACAGCAAGACCCTGAGGAGAGGAGCCTTCTCCGACCTGGCCTTCAACGGGGACCTGGCTAA
GGCAGCCAGCTCGGAGCTACCTGCTGATATTTCAAGCCCTGGATTCCCTCAAGTCCAGCCCCCTCTCA
GAGAATGGAGGCCCTGCCAGCCAGGCCCTCCCCGAGAAGCCTCAGGCTCAGGCCCTGGCTCCCCATC
TTCACCCGCTGATAAGAGTTCTCCTGCCACTCACAGTCTGGAAGCCAGACTCCTGAAGCTTCCCA
GGCTTCTCCCTGCCCGCTGTGACTCCATCAGCTCCAAGTGCAGCCCTGCCTGACGAGGGCTCCCCCCAC
ACCCCCAGCCCGGGCTCCCTGCCGAGGGGGCTCCAGAGGCCCCAGACCCAGCAGCCACCCCTGAGG
TCTTGGAGCCCCATAGCCTGGATCAGCCCCCTGCCACCTACCCCGGCCCTGATCGAGGTGGGTGAGTT
GCTGGATCTCACTCGGACGTTTCCATCTGGCGGGGAGGAGGAGGCAAGGGTGACGCACACCTCCGCCCC
ACCAGCCTGGTTCAGCGCCGATTCTCTGAAGGTGTCTCCAGTACCCAGTCAGGACCAGGAGAAGCTGG
GGGGCTCGCTGGCTGCCCTGCCCAAGGCCAGGGGAGCCAGTTGGCCCTGGATCGTCCCTTTGGGCAGA
GTCCAAGTGGAGCTTATCACAGTCTTCAATGGACCTTCCCCAGAGGCCCTCGGGTCTGGGCGTGTGG



[View online »](#)

CGGCTGGACTCCCCGCCTCCCTCCCCATCACTGAAGCCAGTGAGGCCGCCGAGGCTGCTGAGGCTGGCA
 ACTTGGCCGTTTCCAGCAGGGAAGAAGGAGTGTCTCAGCAGGGGCAAGGGGCTGGGTGAGCTCCAAGTGG
 GTCAGGAAGTTTCTGGGTGCAGGGGGATGATCCAAGCATGTCCCTCACCCAGAAGGGCGATGGGGAGAGT
 CAACCTCAATTCCCAGCTGTTCCCTTGAGCCCCCTGCCTACAACCTGAGGGCACACCTGGATTACCTTTGC
 AGCAGGCAGAGGAGAGATACGAGTCGCAGGAGCCCTTGGCTGGACAGGAGTCCCCCTCCCCCTGGCTAC
 CAGGGAGGCAGCCTTGCCATCCTGGAGCCAGTCTGGGGCAGGAGCAGCCAGCAGCCCCTGACCAGCCC
 TGTGTTCTTTGCTGATGCCCCCTGGAGCTGGACAGGCACTGCCCTGTTGAGGAGGAGGCTGACCCTAG
 CCCGGGCTGAGACCACCCAAGCCAGGACAGAGGCTCAAGACTTGTGTAGGGCATCCCCCGAGCCTCCAGG
 CCCTGAAAGCAGCTCCCCGCTGGCTGGACACCTCCTGGCTTACCACCACCCAGTGGTGGCGGTGCAAGG
 CGGGGAGCTGGAGCTGAGCTGAAGGACACACAGTCCCCAAGTACCTGCTCTGAGGGACTCCTTGGCTGGT
 CCCAGAAAGATCTGCAGAGTGAATTTGGGATCACAGGAGACCCACAGCCAGCAGTTTCACTCCTCCAG
 CTGGTGTCAAGGTGCTTCTCAGGACTATGGCCTTGGGGTGAAGCCCTAGAGGAGACCCAGGTCTCGGA
 GAGAGGGACTGGACCAGCAAGTATGGGCAAGGAGCAGGGGAAGGGAGCACCAGGGAGTGGCCAGCAGGT
 GTGGCATCGGCCAGGAGGATGGAGGCCAGCAGCAGCCAAGACCAGAGTAAAGTGTCTGCCCCAGGGT
 GCTCACAGCCCAGGACCGGGTAGTTGAAAAGCCAGCCAGCTTGGCACTCAGCGGAGCCAGGAGGCAGAT
 GTTCAGGACTGGGAGTTCAGAAAGAGGGATTCCAGGGCACTTACTCCAGCCGGGATGCAGAACTCCAGG
 ACCAGGAATTCGAAAAGAGAGATTCACTGGGTACCTACAGTAGTCGAGATGTAAGCCTTGGGGACTGGGA
 ATTTGGGAAGAGAGATTCTTGGGTGCTTATGCCAGCCAAGATGCCAACGAGCAGGGCCAAGATTTGGGG
 AAGAGGGACCACCATGGTAGGTACAGCAGCCAGGATGCCGATGAGCAGGACTGGGAGTTTCAAGAGAGAG
 ATGTGTCACTCGGCACCTATGGCAGCCGGGCTGCGGAGCCACAGGAACAGGAGTTTGGGAAGAGCGCTTG
 GATAAGGGACTACAGCAGTGGTGGCAGCTCCAGGACCCCTTACGCCCCAGGACAGAAGCTTTGGAACGAGA
 CCCCTGAGCTCTGGTTTCCAGCCGAGGAAGCCAGCAACAGGATGAGGAATTTGAGAAGAAGATTCCAA
 GTGTGGAAAGCAGCCTTGGAGAGGGCAGCAGGGATGCTGGCCGCCAGGAGAGAGAGGATCCGGGGCTT
 GTTCAGTCTAGCACTGCCACGTGCCGATGGGGCACTCGGGCAGAGAGACCAGAGCAGCTGGCAAAAC
 AGTGATGTAGCCAGGAGGTGGGAGGGCATCAGGAGAGACAGCAGGCAGGGGCTCAGGGCCCTGGCAGTG
 CTGACCTGGAAGATGGGAGATGGGAAAGCAGGCTGGGTGCGTGAGTTTAGCCTCAGTGTGGCCCCCA
 GCGAGAGGCAGCATTTAGCCAGGGCAGCAGGACTGGAGCCGGGACTTCTGCATCGAGGCCAGTGAGAGG
 AGCTATCAGTTTGGCATCATTGGCAACGACAGAGTGAAGTGGTGGCTTGGCTTTAGCCCTTCTAGCAAGATGG
 AAGGTGGTCACTTTGTGCTCCTGGGAAGACCACAGCTGGCTCGGTGGACTGGACTGACCAGCTGGGTCT
 CAGGAACTTGAAGTGTCCAGCTGTGTGGTTCTGGGGGCTCGAGCGAGGCCAGGGAGAGTGCCGTGGGA
 CAGATGGGCTGGTCAAGTGGCCTGAGCTTGAAGACATGAACCTGACCGGCTGTTTGGAAAGTGGAGGGT
 CTGAAGAGCCGGGGGAATCGGAGTTGGGGAGAAGGACTGGACTTCTGATGTTAATGTGAAGAGCAAGA
 TTTGGCTGAGGTGCGGGAGGGAGGAGGCCACAGCCAGGCCAGAGAGAGTGGCGTGGGGCAGACTGACTGG
 TCAGGTGTGGAGGCCGAGAGTTCTTAAATCAAGGGAGCGTGGAGTTGGACAGGCAGACTGGACACCTG
 ACCTTGGGCTGAGAAATAGGCCCCAGGGGCACTGTCAGTCTGGAGAGTCCAAGAGCTTGGGGTGGG
 CCAGATGGACTGGGGTAAACAATCGGCCCTGAGGGATTTGGAGGTGACCTGTGACCCAGACTCTGGAGGT
 TCTCAGGGGCTACGGGGATGTGGAGTGGGGCAGATGGACTGGACCCAGGACTTGGCGCCCCAGAATGTGG
 AGCTCTTTGGGGCTCCAAGTGAAGCCAGGGAGCATGGGGTGGCGGGGTGAGCCAGTCCCCAGAGCCCGG
 CCTGAGGCACAATGGCAGCTTGTCTCCTGGCCTGGAGGCCAGAGACCCCTTGGAGGCCAGGGAGCTGGGG
 GTTGGTGAGACAAGTGGGCCAGAGACCCAGGGTGAAGATTACTCCTCGTCTTCTTGGAGCCACACCGCTG
 CAGACCTTGAATGGAGACAGGAGAAGCCCTCAGCTTCGAGCAAGCCCTGGCAGGTGCCGGCCCCGCC
 CCCACCTCCGGCTCCCAGGGCCTGCTGGAGGAGATGCTGGCAGCCAGCAGCTCCAAGGCGGTGGCTCGG
 AGGGAGTCAGCGGCTCGGGCTTGGGGCCTGTTGGAGGAGGAAGGAGCCGGGGCAGGTGCTGCCCAAG
 AGGAGGTGCTGGAGCCTGGCAGGACTCTCCACCCTCCTGGAGGCCGAGCCTGATGGTGGAGCCAGCCA
 GACAGAAGACGTGGATGGCACCTGGGGCTTTCAGCAGCCAGGTGGAGCGATCAGGGGCCAGCACAGACT
 TCTCGGCAGCCCTCCAAGGCCCTCCTGCCAGATCCCCAGTCAAGACTTCTCCTTATTGAGGACACCG
 AGATCCTCGACAGTGCCATGTATCGGAGCCGTGCCAATTGGGGGCAAGCGTGGGCACCGGGCCCCGGT
 CATTCCGGCTGGGGTACCTTGGGCTGTCCGAGGCAGCAGACTCGGATGCACACCTGTTCCAGGACTCT
 ACAGAGCCACGGGCATCTCGGGTCCATCTTCAAGTGAAGAGGTAGTGGAGGAACCTCAGAGCCCGCGGA
 CACGGATGTCGTTGGGCACCAAGGGGCTGAAAGTCAACCTCTTCTGGCCTGAGCCCCCTCAGCCCTGAA
 GGCCAAGCTGCGCCCCGGAATCGCTCAGCTGAGGAGGGAGAGCTGGCTGAGAGCAAGTCGAGCCAGAAG
 GAGTCCGCGGTCCAGCGTTCGAAATCCTGCAAGTCCCAGGACTGGGAAAGCCCCACGTTACCTCCCA

AGCCAGAGAAATCCTCAGGGTCAGAAGGATCGTCGCCCAACTGGCTTCAAGCCCTGAAACTGAAGAAGAA
GAAGGTC

ACGCGTACGCGGCCGCTCGAGCAGAACTCATCTCAGAAGAGGATCTGGCAGCAATGATATCCTGGATT
ACAAGGATGACGACGATAAGGTTTAA

Protein Sequence:

>RC223115 representing NM_033396
Red=Cloning site Green=Tags(s)

MKVSTLRESSAMASPLPREMEEELVPTGSEPGDTRAKPPVKPKPRALPAKPALPAKPSLLVPVGRPPRG
PLAELPSARKMMLAGPQPYGGSKRPLPFAPRPAVEASTGGEATQETGKEEAGKEEPPPLTPPARCAAPG
GVRKAPAPFRPASERFAATTVEEILAKMEQPRKEVLASPDRLWGSRLTFNHDGSSRYGPRTYGTTTAPRD
EDGSTLFRGWSQEGPVKSPAECREEHSTPEERSLPSDLAFNGDLAKAASSELPADISKWPWPSSPAPSS
ENGGPASPLPAEASGSGPGSPHLHPPDKSSPCHSQQLEAQTPEASQASPCPAVTPSAPSAALPDEGSRH
TPSPGLPAEGAPEAPRPSPPPEVLEPHSLDQPPATSPRPLIEVGELLDLTRTFPSGGEEAKGDAHLRP
TSLVQRRFSEGLVQSPSQDQEKLGSLAALPQQGSQLALDRPFGAESNWSLSQSFEWTFPTRPSGLGVW
RLDSPPPSPITEASEAAEAAEAGNLAVSSREEGVSQQGQAGSAPSGSGSWVQGDPSMSLTQKGDGES
QPQFPAVPLEPLPTTEGTPGLPLQQAERYESQEPLAQESPLPLATREAALPILEPVLGQEQPAAPDQP
CVLFADAPEPGQALPVEEEAVTLARAETTQARTEAQDLCRASPEPPGPESSRWLDDLLASPPSGGGAR
RGAGAELKDTQSPSTCSEGLLQWSQKDLQSEFGITGDPQPSFSPSSWCQASQDYGLGGASPRGDPGLG
ERDWTSKYGGGEGSTREWASRCGIGQEEMEASSQDQSKVSAPGVLTAQDRVVGKPAQLGTQRSQEAD
VQDWEFRKRDSQGTYSRDAELQDQEFGKRDSLGTYSRDVSLGDWEFGKRDSL GAYASQDANEQGDQDLG
KRDDHGRYSSQDAEQDWEFQKRDVSLGTYSRAAEPQEQEFGKSAWIRDYSSGGSSRTLDAQDRSFGTR
PLSSGFSPPEAQDQDEEFKIPSVEDSLGEGSRDAGRPERGSGGLFSPSTAHVPDGLGQRDQSSWQN
SDASQEVGGHQRQAGAQGPGSADLEDGEMKRGWVGEFSLVGPQREAAFSPGQDWSRDFCIEASER
SYQFGIIGNDRVSGAGFSPSSKMEGGHFVPPGKTTAGSDVDWDQLGLRNLEVSSCVGSGSSEARESAVG
QMGWSSGLSLRDMNLTGCLSEGGSEEPGGIGVGEKDWTSVNVKSKDLAEVGEVGGHSQARESGVGGTDW
SGVEAGEFLKSRERGVGQADWTPDLGLRNMAPGAVCSPGESKELGVGQMDWGNLGLRDLEVTCDPDSGG
SQGLRGCVGQMDWTQDLAPQNVELFGAPSEAREHGVGGVSQCPEPGLRHNGSLSPGLEARDPLEARELG
VGETSGPETQGEDYSSSLEPHPADPGMETGEALSFGASPGRCPARPPPSGSQLLEMLAASSKAVAR
RESAASGLGGLLEEEGAGAGAAQEEVLEPGRDPPSWRPQPDGEASQTEDVDGTWSSAARWSDQGAQT
SRRPSQGPAPSPSQDFSFIEDTEILDSAMYRSRANLGRKRGRHAPVIRPGGTLGLSEAADSAHLFQDS
TEPRASRVSSDEEVVEEPQSRTRMSLGTKGLKYNLFPGLSPSALKAKLRPRNRSAAEELAESKSSQK
ESAVQRSKCKVPGLGKPLTLPPKPEKSSGSESSPNWLQALKLKKKKV

TRTRPLEQKLISEEDLAANDILDYKDDDDKV

Chromatograms:

https://cdn.origene.com/chromatograms/mk8045_f09.zip

Restriction Sites:

SgfI-MluI

Cloning Scheme:

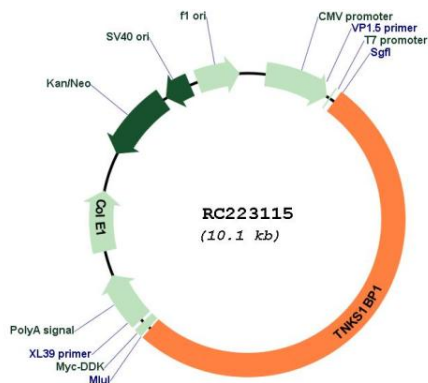

ACCN: NM_033396

ORF Size: 5187 bp

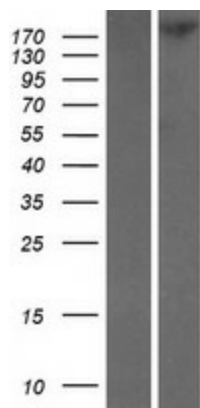
OTI Disclaimer: Due to the inherent nature of this plasmid, standard methods to replicate additional amounts of DNA in E. coli are highly likely to result in mutations and/or rearrangements. Therefore, OriGene does not guarantee the capability to replicate this plasmid DNA. Additional amounts of DNA can be purchased from OriGene with batch-specific, full-sequence verification at a reduced cost. Please contact our customer care team at custsupport@origene.com or by calling 301.340.3188 option 3 for pricing and delivery.

The molecular sequence of this clone aligns with the gene accession number as a point of reference only. However, individual transcript sequences of the same gene can differ through naturally occurring variations (e.g. polymorphisms), each with its own valid existence. This clone is substantially in agreement with the reference, but a complete review of all prevailing variants is recommended prior to use. [More info](#)

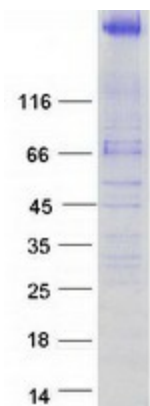
OTI Annotation:	This clone was engineered to express the complete ORF with an expression tag. Expression varies depending on the nature of the gene.
Components:	The ORF clone is ion-exchange column purified and shipped in a 2D barcoded Matrix tube containing 10ug of transfection-ready, dried plasmid DNA (reconstitute with 100 ul of water).
Reconstitution Method:	<ol style="list-style-type: none"> 1. Centrifuge at 5,000xg for 5min. 2. Carefully open the tube and add 100ul of sterile water to dissolve the DNA. 3. Close the tube and incubate for 10 minutes at room temperature. 4. Briefly vortex the tube and then do a quick spin (less than 5000xg) to concentrate the liquid at the bottom. 5. Store the suspended plasmid at -20°C. The DNA is stable for at least one year from date of shipping when stored at -20°C.
RefSeq:	<u>NM_033396.3</u>
RefSeq Size:	5947 bp
RefSeq ORF:	5190 bp
Locus ID:	85456
UniProt ID:	<u>Q9C0C2</u>
Cytogenetics:	11q12.1
MW:	181.6 kDa

Product images:


Circular map for RC223115



Western blot validation of overexpression lysate (Cat# [LY409576]) using anti-DDK antibody (Cat# [TA50011-100]). Left: Cell lysates from untransfected HEK293T cells; Right: Cell lysates from HEK293T cells transfected with RC223115 using transfection reagent MegaTran 2.0 (Cat# [TT210002]).



Coomassie blue staining of purified TNKS1BP1 protein (Cat# [TP323115]). The protein was produced from HEK293T cells transfected with TNKS1BP1 cDNA clone (Cat# RC223115) using MegaTran 2.0 (Cat# [TT210002]).