

Product datasheet for **RC223112**

SERPING1 (NM_001032295) Human Tagged ORF Clone

Product data:

Product Type:	Expression Plasmids
Product Name:	SERPING1 (NM_001032295) Human Tagged ORF Clone
Tag:	Myc-DDK
Symbol:	SERPING1
Synonyms:	C1IN; C1INH; C1NH; HAE1; HAE2
Mammalian Cell Selection:	Neomycin
Vector:	pCMV6-Entry (PS100001)
E. coli Selection:	Kanamycin (25 ug/mL)



[View online »](#)

ORF Nucleotide Sequence:

>RC223112 ORF sequence
 Red=Cloning site Blue=ORF Green=Tags(s)

TTTTGTAATACGACTCACTATAGGGCGGCCGGAATTCGTCGACTGGATCCGGTACCGAGGAGATCTGCC
 GCC**CGCATCGCC**

ATGGCCTCCAGGCTGACCCTGCTGACCCTCCTGCTGCTGCTGCTGGGTGGGATAGAGCCTCCTCAAATC
 CAAATGCTACCAGCTCCAGCTCCAGGATCCAGAGAGTTTGAAGACAGAGGCGAAGGGAAGGTCGCAAC
 AACAGTTATCTCCAAGATGCTATTTCGTTGAACCCATCCTGGAGGTTTCCAGCTTGCCGACAACCAACTCA
 ACAACCAATTCAGCCACCAAAATAACAGCTAATACCACTGATGAACCCACCACACAACCCACCACAGAGC
 CCACCACCAACCCACCATCCAACCCACCAACCAACTACCCAGCTCCCAACAGATTCTCTACCCAGCC
 CACTACTGGGTCCTTCTGCCCAGGACCTGTTACTCTCTGCTGCTGACTTGGAGAGTCATTCAACAGAGGCC
 GTGTTGGGGGATGCTTTGGTAGATTTTCCTGAAGCTTACCACGCCTTCTCAGCAATGAAGAAGGTGG
 AGACCAACATGGCCTTTCCCATTCAGCATCGCCAGCCTCCTTACCCAGGTCCTGCTCGGGGCTGGGA
 GAACACCAAAACAAACCTGGAGAGCATCCTCTTACCCCAAGGACTTACCTGTGTCCACCAGGCCCTG
 AAGGGCTTCACGACCAAAAGGTGTACCTCAGTCTCTCAGATCTTCCACAGCCAGACCTGGCCATAAGGG
 ACACCTTTGTGAATGCCTCTCGGACCCTGTACAGCAGCAGCCCAAGAGTCTAAGCAACAACAGTACGC
 CAACTTGGAGCTCATCAACACCTGGGTGGCAAGAACAACAACAAGATCAGCCGGCTGCTAGACAGT
 CTGCCCTCCGATACCCGCCTTGTCTCCTCAATGCTATCTACCTGAGTGCCAAGTGAAGACAACATTTG
 ATCCCAAGAAAACCGAATGGAACCTTCACTTCAAAAACCTCAGTTATAAAAGTGCCCATGATGAATAG
 CAAGAAGTACCCTGTGGCCATTTCACTTGACCAAACTTGAAGCCAAGTGGGGCAGCTGCAGCTCTCC
 CACAATCTGAGTTTGGTATCCTGGTACCCAGAACCTGAAACATCGTCTTGAAGACATGGAACAGGCTC
 TCAGCCCTTCTGTTTCAAGGCCATCATGGAGAACTGGAGATGTCCAAGTCCAGCCACTCTCCTAAC
 ACTACCCCGCATCAAAGTGACGACAGCCAGGATATGCTCTCAATCATGGAGAAAATTGGAATTCCTCGAT
 TTTTCTTATGACCTTAACCTGTGTGGGCTGACAGAGGACCAGATCTTACGGTTTCTGCGATGCAGCACC
 AGACAGTGTGGAAGTGCAGAGACTGGGTGGAGGCGGCTGCAGCCTCCGCCATCTCTGTGGCCCGCAC
 CCTGCTGGTCTTTGAAGTGCAGCAGCCCTTCTCTTATGCTCTGGGACCAGCAGACAAGTTCCCTGTC
 TTCATGGGGCGAGTATATGACCCAGGGCC

ACGCGTACGCGGCCGCTCGAGCAGAACTCATCTCAGAAGAGGATCTGGCAGCAAATGATATCCTGGATT
 ACAAGGATGACGACGATAAGGTTTAA

Protein Sequence:

>RC223112 protein sequence
 Red=Cloning site Green=Tags(s)

MASRLTLLTLLLLLAGDRASSNPATSSSSQDPESLQDRGEGKVATTVISKMLFVEPILEVSSLPTTNS
 TTNSATKITANTTDEPTTQPTTEPTTQPTIQPTQPTTQLPTDPTQPTTGSFCPGPVTLCSDLHSTEA
 VLGDALVDFSLKLYHAFSAMKKVETNMAFSPFSIASLLTQVLLGAGENTKNLESILSYPKDFTCVHQAL
 KGFTTKGVTSVSQIFHSPDLAIRDTFVNASRTLYSSSPRVLSNNSDANLELINTWVAKNTNKKISRLLDS
 LPSDTRLVLLNAIYLSAKWKTFDPKTRMEPFHFKNSVIKVPMMNSKKYPVAHFIDQTLKAKVQQLQS
 HNL SLVILVPQNLKHRLEDMEQALSPSVFKAIMEKLEMSKFQPTLLTLPRIKVTTSDMLSIMKLEFFD
 FSYDLNLCGLTEDPDLQVSAMQHTVLELTETGVEAAAASISVARTLLVFEVQQPFLFMLWDQQHKFPV
 FMGRVYDPRA

TRTRPLEQKLISEEDLAANDILDYKDDDDKV

Chromatograms:

https://cdn.origene.com/chromatograms/mk6539_a11.zip

Restriction Sites:

Sgfl-Mlul

Cloning Scheme:


ACCN: NM_001032295

ORF Size: 1500 bp

OTI Disclaimer: The molecular sequence of this clone aligns with the gene accession number as a point of reference only. However, individual transcript sequences of the same gene can differ through naturally occurring variations (e.g. polymorphisms), each with its own valid existence. This clone is substantially in agreement with the reference, but a complete review of all prevailing variants is recommended prior to use. [More info](#)

OTI Annotation: This clone was engineered to express the complete ORF with an expression tag. Expression varies depending on the nature of the gene.

Components: The ORF clone is ion-exchange column purified and shipped in a 2D barcoded Matrix tube containing 10ug of transfection-ready, dried plasmid DNA (reconstitute with 100 ul of water).

Reconstitution Method:

1. Centrifuge at 5,000xg for 5min.
2. Carefully open the tube and add 100ul of sterile water to dissolve the DNA.
3. Close the tube and incubate for 10 minutes at room temperature.
4. Briefly vortex the tube and then do a quick spin (less than 5000xg) to concentrate the liquid at the bottom.
5. Store the suspended plasmid at -20°C. The DNA is stable for at least one year from date of shipping when stored at -20°C.

RefSeq: [NM_001032295.1](#), [NP_001027466.1](#)

RefSeq Size: 1832 bp

RefSeq ORF: 1503 bp

Locus ID: 710

UniProt ID: [P05155](#)

Cytogenetics: 11q12.1

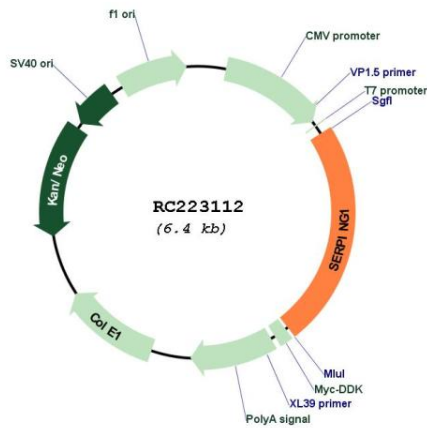
Protein Families: Druggable Genome, Secreted Protein

Protein Pathways: Complement and coagulation cascades

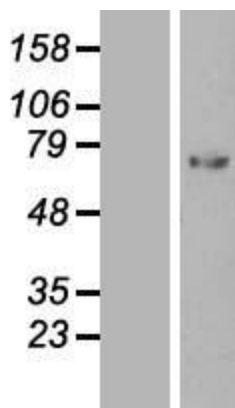
MW: 55.2 kDa

Gene Summary: This gene encodes a highly glycosylated plasma protein involved in the regulation of the complement cascade. Its encoded protein, C1 inhibitor, inhibits activated C1r and C1s of the first complement component and thus regulates complement activation. It is synthesized in the liver, and its deficiency is associated with hereditary angioneurotic oedema (HANE). Alternative splicing results in multiple transcript variants encoding the same isoform. [provided by RefSeq, May 2020]

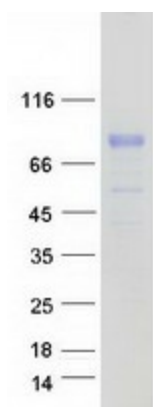
Product images:



Circular map for RC223112



Western blot validation of overexpression lysate (Cat# [LY422304]) using anti-DDK antibody (Cat# [TA50011-100]). Left: Cell lysates from untransfected HEK293T cells; Right: Cell lysates from HEK293T cells transfected with RC223112 using transfection reagent MegaTran 2.0 (Cat# [TT210002]).



Coomassie blue staining of purified SERPING1 protein (Cat# [TP323112]). The protein was produced from HEK293T cells transfected with SERPING1 cDNA clone (Cat# RC223112) using MegaTran 2.0 (Cat# [TT210002]).