

Product datasheet for **RC223110**

ANKFY1 (NM_020740) Human Tagged ORF Clone

Product data:

Product Type:	Expression Plasmids
Product Name:	ANKFY1 (NM_020740) Human Tagged ORF Clone
Tag:	Myc-DDK
Symbol:	ANKFY1
Synonyms:	ANKHZN; DKFZp686M19106; KIAA1255; ZFYVE14
Mammalian Cell Selection:	Neomycin
Vector:	pCMV6-Entry (PS100001)
E. coli Selection:	Kanamycin (25 ug/mL)



[View online »](#)

ORF Nucleotide Sequence:

>RC223110 representing NM_020740
 Red=Cloning site Blue=ORF Green=Tags(s)

TTTTGTAATACGACTCACTATAGGGCGGCCGGAATTCGTCGACTGGATCCGGTACCGAGGAGATCTGCC
 GCC**GCGATCGCC**

ATGGCGGAAGAGGAGGTGGCCAAGTTGGAGAAGCACTTGATGCTTCTGCGCAGGAGTATGTCAAGCTGC
 AGAAGAAGCTGGCGGAGACAGAGAAGCGCTGCGCTCTCTGGCTGCGCAGGCAAACAAGGAGAGCAGCAG
 CGAGTCCCTTCATCAGCCGCTGCTGGCCATCGTGGCAGACCTCTACGAGCAGGAGCAGTACAGCGATCTG
 AAGATAAAGTTGGGACAGGCACATCAGTGCTACAAGTTGTCTGCGCAGCCGAGTACAGCTGGA
 GTCTGGCTAACTGTCTTCCACTAAAGAGTTGGACCTGTCAGATGCTAATCCTGAGGTGACGATGACAA
 GCTTCGCTGGATCTATACAGATGAGCTGGAGTTGAGAGGATGATGTGTTCTGACTGAACTGATGAAA
 CTAGCAAATCGGTTTCAGCTACAGCTCCTCAGGGAGAGATGTGAGAAGGGTGTATGTCTCTAGTGAATG
 TCAGGAACTGTATTCGCTTCTACCAGACGGCAGAGGAGCTGAATGCCAGCACACTGATGAACTACTGTGC
 AGAAATTATTGCAAGTCATTGGGACGACCTGAGGAAGGAGGATTCAGCAGCATGAGCGCTCAGTTGTTA
 TACAAAATGATCAAATCCAAGACAGAGTACCCGCTACATAAAGCCATCAAAGTGGAGAGAGAAGACGTGG
 TCTTCCTGTATCTGATTGAAATGGATCCAGCTCCCTGGGAAGCTGAATGAAGCGGATCATAACGGAGA
 TCTGGCATTAGATCTAGCCCTCTCACGACGACTGGAGATATTGCCACCACGCTGGTTAGTACAAAAGCT
 GATGTGGACATGGTGGACAAGAGTGGCTGGAGCTTGTACACAAAGGAATCCAAAGAGGAGATCTCTTTG
 CTGCCACTTTCCTCATTAAAGATGGGGCCTTTGTCAACGCTGCTACACTGGTGCCAGGAGACACCACT
 GCACCTTGTGGCCTTGTACAGTTCAAAGAACTCAGCAGATGTGATGTCTGAGATGGCGCAGATTGCA
 GAGGCCCTTCTGCAGGCTGGTCCAACCCCAACATGCAGGACAGCAAGGGGAGGACTCCTTTACATGTGT
 CCATCATGGCCGGAATGAATATGTGTTTCAGTCAGCTGCTGCAGTGCAAACAAGTATGATTAGAAGTCAA
 AGACCAGAGGGCAGCAGCGCTCTGTGGCTGGCAGTGCAGCATATCACAGTGTCTTCTGACCAGTCTGTG
 AACCCCTTCAAGATGTCCCGTGGTAAATGGGACTTCATTTGATGAGAACAGCTTTGCAGCCAGACTCA
 TCCAGCGCGCAGCCACACAGACGCACCTGACACGGCGACAGGTAAGCACGTGCCTCCCGAAGGGGCGA
 CGCTGGGGTCTGCAGGCGCCAGGAAATGGCATGTAATGCCTTACCCCAAATTTAGAAAC

ACGCGTACGCGGCCGCTCGAGCAGAACTCATCTCAGAAGAGGATCTGGCAGCAAATGATATCTGGATT
 ACAAGGATGACGACGATAAGGTTTAA

Protein Sequence:

>RC223110 representing NM_020740
 Red=Cloning site Green=Tags(s)

MAEEEVAKLEKHLMLLRQEYVKLQKLAETEKRCALLAAQANKESSESFISRLLAIVADLYEQEQYSDL
 KIKVGDHRHISAHKFVLAARSDSWLANLSSTKELDLSDANPEVTMTLRWIYTDLEFREDDVFLTELMK
 LANRFQLQLLRERCEKGVMSLVNVRNCRIFYQTAEELNASTLMNYCAEIIASHWDDLKEDFSSMSAQLL
 YKMIKSKTEYPLHKAIKVEREDVVFLYLIEMDSQLPGKLEADHNGDLALDLALSRRLESIAATTLVSHKA
 DVDMDKSGWSLLHKGIRGDLFAATFLIKNGAFVNAATLGAQETPLHLVALYSSKKHSADVMSAQIA
 EALLQAGANPNMQDSKGRTPHVSIMAGNEYVFSQLLQCKQLDLELKDHEGSTALWAVQHITVSSDQSV
 NPFEDVPVNGTSFDENSFAARLIQRGSHDAPDTATGKARASRRGDAGVCRRQEMACKCLHPKFRN

TRTRPLEQKLISEEDLAANDILDYKDDDDKV

Chromatograms:

https://cdn.origene.com/chromatograms/ja1406_c09.zip

Restriction Sites:

Sgfl-Mlul

Cloning Scheme:

Cloning sites used for ORF Shutting:


ACCN: NM_020740

ORF Size: 1461 bp

OTI Disclaimer: The molecular sequence of this clone aligns with the gene accession number as a point of reference only. However, individual transcript sequences of the same gene can differ through naturally occurring variations (e.g. polymorphisms), each with its own valid existence. This clone is substantially in agreement with the reference, but a complete review of all prevailing variants is recommended prior to use. [More info](#)

OTI Annotation: This clone was engineered to express the complete ORF with an expression tag. Expression varies depending on the nature of the gene.

Components: The ORF clone is ion-exchange column purified and shipped in a 2D barcoded Matrix tube containing 10ug of transfection-ready, dried plasmid DNA (reconstitute with 100 ul of water).

Reconstitution Method:

1. Centrifuge at 5,000xg for 5min.
2. Carefully open the tube and add 100ul of sterile water to dissolve the DNA.
3. Close the tube and incubate for 10 minutes at room temperature.
4. Briefly vortex the tube and then do a quick spin (less than 5000xg) to concentrate the liquid at the bottom.
5. Store the suspended plasmid at -20°C. The DNA is stable for at least one year from date of shipping when stored at -20°C.

RefSeq: [NM_020740.2](#), [NP_065791.1](#)
RefSeq Size: 1904 bp

RefSeq ORF: 1463 bp

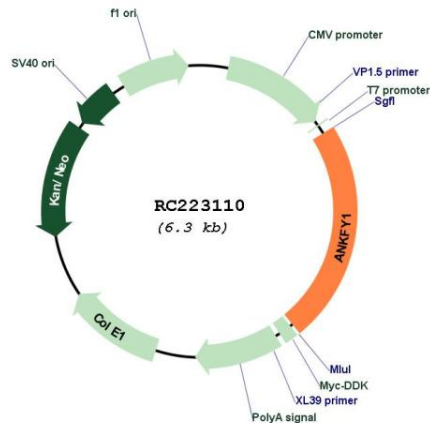
Locus ID: 51479

Cytogenetics: 17p13.2

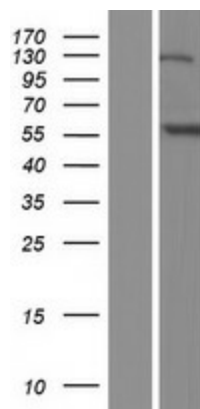
MW: 54.6 kDa

Gene Summary:

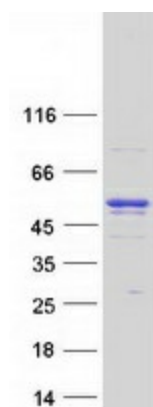
This gene encodes a cytoplasmic protein that contains a coiled-coil structure and a BTB/POZ domain at its N-terminus, ankyrin repeats in the middle portion, and a FYVE-finger motif at its C-terminus. This protein belongs to a subgroup of double zinc finger proteins which may be involved in vesicle or protein transport. Alternate splicing results in multiple transcript variants of this gene. [provided by RefSeq, Apr 2012]

Product images:


Circular map for RC223110



Western blot validation of overexpression lysate (Cat# [LY412365]) using anti-DDK antibody (Cat# [TA50011-100]). Left: Cell lysates from untransfected HEK293T cells; Right: Cell lysates from HEK293T cells transfected with RC223110 using transfection reagent MegaTran 2.0 (Cat# [TT210002]).



Coomassie blue staining of purified ANKFY1 protein (Cat# [TP323110]). The protein was produced from HEK293T cells transfected with ANKFY1 cDNA clone (Cat# RC223110) using MegaTran 2.0 (Cat# [TT210002]).