

Product datasheet for RC223109

HSFY1 (HSFY2) (NM_001001877) Human Tagged ORF Clone

Product data:

Product Type: Expression Plasmids
Product Name: HSFY1 (HSFY2) (NM_001001877) Human Tagged ORF Clone
Tag: Myc-DDK
Symbol: HSFY1
Synonyms: HSF2L; HSFY
Mammalian Cell Selection: Neomycin
Vector: pCMV6-Entry (PS100001)
E. coli Selection: Kanamycin (25 ug/mL)
ORF Nucleotide Sequence: >RC223109 representing NM_001001877
 Red=Cloning site Blue=ORF Green=Tags(s)

TTTTGTAATACGACTCACTATAGGGCGGCCGGAATTCGTCGACTGGATCCGGTACCGAGGAGATCTGCC
 GCC**CGATCGCC**

ATGGCACATGTTTCTTCAGAACTCAAGATGTTTCCCCAAAGATGAATTAAGTCTTCAGAAGCTCCA
 CTAGGTCTCCATTGTGTGAACACACCTTCCCTGGGACTCAGACTTACGGTCAATGATTGAAGAATGC
 TTTTCAGTTTTGTGACAAAGATCCTTGTAGAAAGTCCAAGTTACACAGTTTGTGTCTCTGAGCCAGAT
 AAAGATGATGTTTTCTTCTGAACTTTCCAGGAACTTTGGAAAATAGTGGAAAGTGACCAATTCA
 AGTCTATTTTCATGGGATGAGAATGGAAGTGCATAGTGATTAATGAAGAACTCTCAAGAAAGAAATTTT
 GGAACAAAGGCTCCTTACAGAATATTTCAAAGTATGCTATCAAAAGTTTTGTTGACAGCTCAACCTT
 TATGGATTTAGTAAATCAACAGAATTTCAAAGATCTGCCTTTCTAGCCACCTTTCTGTCAGAAGAGA
 AAGAATCGTCTGTCTTAAGCAAGATACGCTTACCAAAAATGAACTTTCCAGATCTTCAACTTATGAAA
 CAGGATTTATGTTGCAACTTACATTTAAAGATGAGTCGAATTACTCA

ACGCGTACGCGGCCGCTCGAGCAGAACTCATCTCAGAAGAGGATCTGGCAGCAATGATATCCTGGATT
 ACAAGGATGACGACGATAAGGTTTAA

Protein Sequence: >RC223109 representing NM_001001877
 Red=Cloning site Green=Tags(s)

MAHVSSETQDVSPKDEL TASEASTRSPICEHTFPGDSDLRSMIEEHAQVLSQGSLLSPSYTVCVSEPD
 KDDDFLSLNFPRKLWKIVESDQFKSISWDENGTICIVINEELFKKEILETKAPYRIFQTDIAIKSFVRQLNL
 YGFSKIQNFQSAFLATFLSEEKESVLSKIRFTKMKLSRSSTYENRYLCCNLHLKDESNYS

TRTRPLEQKLISEEDLAANDILDYKDDDDKV

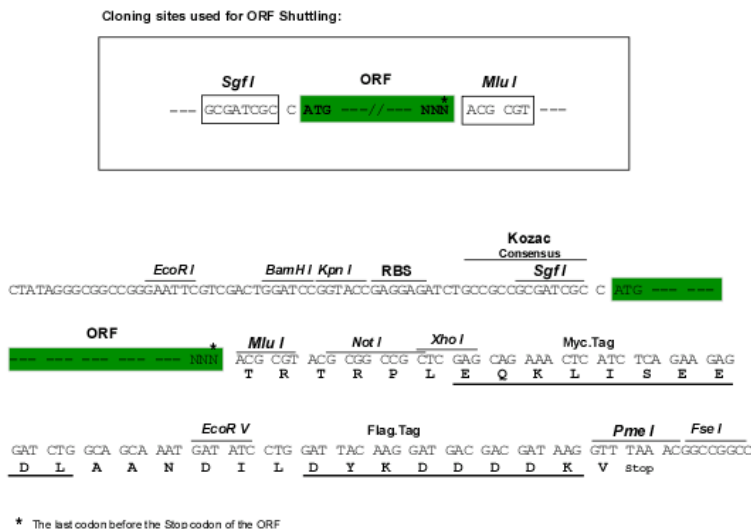


[View online »](#)

Chromatograms: https://cdn.origene.com/chromatograms/mk8045_f10.zip

Restriction Sites: SgfI-MluI

Cloning Scheme:



ACCN: NM_001001877

ORF Size: 609 bp

OTI Disclaimer: The molecular sequence of this clone aligns with the gene accession number as a point of reference only. However, individual transcript sequences of the same gene can differ through naturally occurring variations (e.g. polymorphisms), each with its own valid existence. This clone is substantially in agreement with the reference, but a complete review of all prevailing variants is recommended prior to use. [More info](#)

OTI Annotation: This clone was engineered to express the complete ORF with an expression tag. Expression varies depending on the nature of the gene.

Components: The ORF clone is ion-exchange column purified and shipped in a 2D barcoded Matrix tube containing 10ug of transfection-ready, dried plasmid DNA (reconstitute with 100 ul of water).

Reconstitution Method:

1. Centrifuge at 5,000xg for 5min.
2. Carefully open the tube and add 100ul of sterile water to dissolve the DNA.
3. Close the tube and incubate for 10 minutes at room temperature.
4. Briefly vortex the tube and then do a quick spin (less than 5000xg) to concentrate the liquid at the bottom.
5. Store the suspended plasmid at -20°C. The DNA is stable for at least one year from date of shipping when stored at -20°C.

RefSeq: [NM_001001877.1](#), [NP_001001877.1](#)

RefSeq Size: 1038 bp

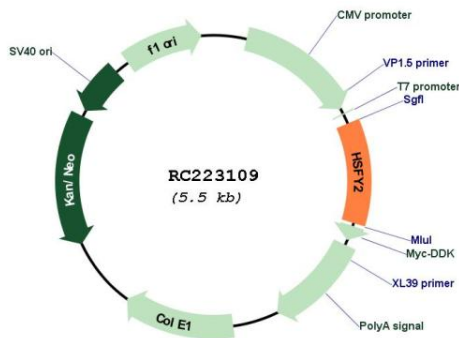
RefSeq ORF: 612 bp

Locus ID: 159119

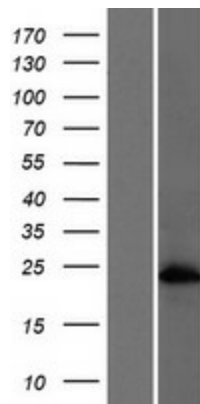
UniProt ID: [Q96LI6](#)
Cytogenetics: Yq11.222
Protein Families: Transcription Factors
MW: 23.2 kDa

Gene Summary: This gene encodes a member of the heat shock factor (HSF) family of transcriptional activators for heat shock proteins. This gene is a candidate gene for azoospermia, since it localizes to a region of chromosome Y that is sometimes deleted in infertile males. The genome has two identical copies of this gene within a palindromic region; this record represents the more telomeric copy. Alternative splicing results in multiple transcript variants encoding distinct isoforms. [provided by RefSeq, Jul 2008]

Product images:



Circular map for RC223109



Western blot validation of overexpression lysate (Cat# [LY424259]) using anti-DDK antibody (Cat# [TA50011-100]). Left: Cell lysates from untransfected HEK293T cells; Right: Cell lysates from HEK293T cells transfected with RC223109 using transfection reagent MegaTran 2.0 (Cat# [TT210002]).