

Product datasheet for RC223108

PNPLA7 (NM_001098537) Human Tagged ORF Clone

Product data:

Product Type:	Expression Plasmids
Product Name:	PNPLA7 (NM_001098537) Human Tagged ORF Clone
Tag:	Myc-DDK
Symbol:	PNPLA7
Synonyms:	C9orf111; NTE-R1; NTEL1
Mammalian Cell Selection:	Neomycin
Vector:	pCMV6-Entry (PS100001)
E. coli Selection:	Kanamycin (25 ug/mL)
ORF Nucleotide Sequence:	>RC223108 representing NM_001098537 Red=Cloning site Blue=ORF Green=Tags(s)

TTTTGTAATACGACTCACTATAGGGCGGCCGGAATTCGTCGACTGGATCCGGTACCGAGGAGATCTGCC
GCC**CGATCGCC**

ATGGAGGAAGAGAAAGATGACAGCCACAGGCTGACTTCTGCCTGGGCACCGCCCTGCACTCTTGGGGAC
TGTGGTTCACGGAGGAAGGTTACCGTCCACCATGCTGACGGGGATTGCAGTTGGAGCCCTCTGGCCCT
GGCCTTGGTTGGTGTCTCATCTTTTCATGTTTCAGAAGGCTTAGACAATTCGACAAGCACAGCCCACT
CCTCAGTACCGGTTCCGGAAGAGAGACAAAGTGATGTTTTACGGCCGGAAGATCATGAGGAAGGTGACCA
CACTCCCCAACACCTTGTGGAGAACACTGCCCTGCCCGCAGCGGGCCAGGAAGAGGACCAAGGTGCT
GTCTTTGGCCAAGAGGATTCTGCGTTTCAAGAAGGAATACCCGGCCCTGCAGCCCAAGGAGCCCGCC
TCCTGCTGGAGGCCGACCTCACGGAGTTTGACGTGAAGAATTCTCACCTGCCATCGGAAGTTCTGTACA
TGCTGAAAACGTTCCGGTCTGGGCCACTTTGAGAAGCCGCTGTTCTGGAGCTTTGCAAAACATCGT
CTTTGTGCAGCTGCAGGAAGGGGAGCACGTCTCCAGCCAGGGAGCCGACCCAGCATCTGTGTGGTG
CAGGACGGGCGGCTGGAGGTCTGCATCCAGGACACTGACGGCACCGAGGTGGTGGTGAAGAGGTTCTGG
CGGAGACAGCGTCCACAGCCTGCTCAGCATCTGGACATCATCACCGCCATGCTGCACCTTACAAAAC
GGTCTCCGTCCGCGGGCCATCCCGTCCACCATCTCCGGCTTCCAGCTGCGGCTTTTCATGGAGTTTTT
GAGAAATATCCGAAACTCTGGTGAGGGTGGTGCAGATCATGTTGCGGCTGCAGAGGTGACCTTTC
TGCTCTGCACAACCTACCTCGGCCTGACCACAGAGCTCTTCAACGCTGAGAGCCAGGCCATCCCTCTCGT
GTCTGTAGCCAGTGTGGCTGCCGGAAGGCCAAGAAGCAGGTGTTCTATGGCGAAGAAGAGCGGCTTAAA
AAGCCACCGCGGCTCCAGGAGTCTGTGACTCAGATCACGGGGCGGCCCGCCGCGAGCTGCTGGCCCC
TGCTGAAGAGGAGCCACTCCGTCGCCGCTTCCATTGCAAACAGATCTGGAGGAGCTGGAGAAGCC
CGGGCAGGTGACCCTGACCCTTCGGCCCCACAAGGGGGCCAGGCAGTGCCTTCTGATCTGGGGATG
GCATGTGACCGTCCAGGCTCTTCTGCACTCGGACGAGCACCCGGGAGCTCCGTGGCCAGCAAGTCCA
GGAAAAGCGTGATGGTTGCAGAGATACCCTCCACGGTCTCCAGCACTCAGAGAGTACACGGATGAGAC
CCTGGCCAGCAGGAAGTCGGATGCCATCTCAGAGCTGCCAAGAAGGACCTGCTCACCTGATGAAGCTG



[View online »](#)

GAAGACTCATCTCTGTTGGATGGCCGGGTGGCGCTTCTGCACGTTCTGCAGGCACGGTGGTGTCAAGGC
AGGGAGACCAGGACGCCAGCATCTGTTCGTGGTCTCGGGGCTGCTGCACGTGTACCAGCGGAAGATCGG
CAGCCAGGAGGACACCTGCTTGTTCCTCACGCGCCCCGGGGAGATGGTGGGCCAGCTGGCCGTGCTCACC
GGGGAGCCTCTCATCTTCACCGTCAAGGCCAACAGGGACTGCAGCTTCTGTCCATCTCCAAGGCCACT
TCTATGAAATCATGCGGAAGCAGCCGACCGTCTGCTGGTGTGGCGCACACTGTGGTGAAGAGGATGTC
GTCTTTCGTGCGGCAATCGACTTTGCCCTGGACTGGTGGAGGTGGAGGCCGGCGAGCAATATACAGG
CAGGGGACAAAGTCCGACTGCACGTACATCATGCTCAGCGCGGCTGCGCTCTGTGATCCGGAAGGATG
ATGGGAAGAAGCGCTGGCCGGGAGTACGGCCGAGGAGACCTCGTCGGCGTGGTGGAGACACTGACCCA
CCAGGCCCGGGCACCACGGTGCATGCCGTTCCGGACTCAGAATTGGCCAAGCTGCCGCGAGGAGCCCTC
ACGTCCATCAAGCGCAGGTACCCACAGGTGGTACTCGGCTGATTCATCTCTTGGGTGAGAAGATCTGG
GCAGCCTCCAGCAGGGACCTGTGACAGGCCACCAGCTTGGGCTCCCCACGGAGGGCAGCAAGTGGGACTT
GGGGAACCCGGCTGTCAACCTGTCCACGGTGGCAGTGTGCCGTGTGAGGAAAGTGCCCTCACCGCC
TTCGCCCTGGAGCTGGAGCATGCCCTCAGCGCCATCGGCCGACCCTGCTGCTACTAGTACAACATAA
AACGGCGCCTTGGCTCCGCTGCCCTGGACAGTGTTCACGAGTACCGGCTGTCCAGCTGGTGGGGCAGCA
GGAGGACACCCACAGGATCGTCTCTACCAGGTAGATGGCAGCTCACACCTGGACCCAGCGCTGCGTG
CGCCAGGCCGACTGCATCCTCATCGTGGCCTGGGTGACCAGGAGCCACAGTGGGCGAGCTGGAGCGGA
TGCTGGAGAGCACAGCTGTGCGTGCCAGAAAGCAGCTGATCCTGTGCACAGGGAGGAGGGCCCGCGCC
AGCGCGCACCGTGGAGTGGTCAACATGCGGAGCTGGTGTCCGGCCACCTGCACCTCTGCTGCCCGCGC
CGCGTCTTCTCCAGGAGGAGCCTGCCAAAGCTGGTGGAGATGTACAAGCATGTCTTCCAGCGGCCCCCGG
ACCGACTCAGACTTCTCCGCTGGCAGGGTGTGACGGGCAACGCCATTGCCCTGGTGTGGGGG
AGGGGAGCAAGAGGCTGTGCCAGGTGGCGTTCGAGGCTTGGCGGAGTGGCGATCCCTGTGGAC
ATGGTGGGAGGCACGTCCATCGGGCCTTCGTGGTGGCTGTACTCTGAGGAGCGGAACACAGCCAGA
TCCGGATCCGGGCAAGCAGTGGGCCGAGGGCATGACGTCCTTGATGAAGGCCGCTGGACCTCACCTA
CCCATCACGTCCATGTTCTCCGAGCCGGCTTCAACAGCAGCATCTTACGCGTCTTCAAGGACCAGCAG
ATCGAGGACCTGTGGATTCTTATTTCCGCATCACACCAGCATCACAGCCTCGGCCATGCGGGTCCACA
CCGACGGCTCCCTGTGGTGGTACGTGCGTGCCAGCATGTCCTGTCCGGTTACATGCCCCCTCTCTGTGA
CCCGAAGGACGGACACCTGCTGATGGACGGGGCTACATCAACAACCTCCAGCGGATGTGGCCCGTCC
ATGGGGGCAAAAGTGGTGTGATCGCCATTGACGTGGGCAGCCGAGATGAGACGGACCTACCAACTATGGG
ATGCGCTGTCTGGGTGGTGGCTGCTGTGAAACGCTGGAACCCCTTGCCACGAAAGTCAAGGTGTTGAA
CATGGCAGAGATTCAGACGCGCCTGGCCTACGTGTGTTGCGTGGCGCAGCTGGAGGTGGTGAAGAGCAGT
GACTACTGCGAGTACCTGCGCCCCCATCGACAGCTACAGACCCTGGACTTCGCAAGTCAACGAGA
TCTGCGAAGTGGGCTACCAGCACGGGCGCACGGTGTGACATCTGGGGCCGAGCGGCGTGTGGAGAA
GATGCTCCGCGACCAGCAGGGGCCGAGCAAGAAGCCCGGAGTGGGTCCTCACCTGTCCCAACGCCTCC
TTCACGGACCTTGCCGAAATGTGTCTCGCATTGAGCCCGCAAGCCCGCATGGTGGATGACGAATCTG
ACTACCAGACGGAGTACGAGGAGGAGCTGCTGGACGTCCCAGGGATGCATACGCAGACTCCAGAGCAC
CTCAGCCCAGCAGGGCTCAGACTTGAGGACGAGTCTCTACTGCGGCATCGACACCCAGTCTGGCTTTC
CCAAAAGTGTCTGAGGGCTCCTCTGACCAGGACGGG

ACGCGTACGCGGCCGCTCGAGCAGAACTCATCTCAGAAGAGGATCTGGCAGCAAATGATATCCTGGATT
ACAAGGATGACGACGATAAGGTTTAA

Protein Sequence: >RC223108 representing NM_001098537
Red=Cloning site Green=Tags(s)

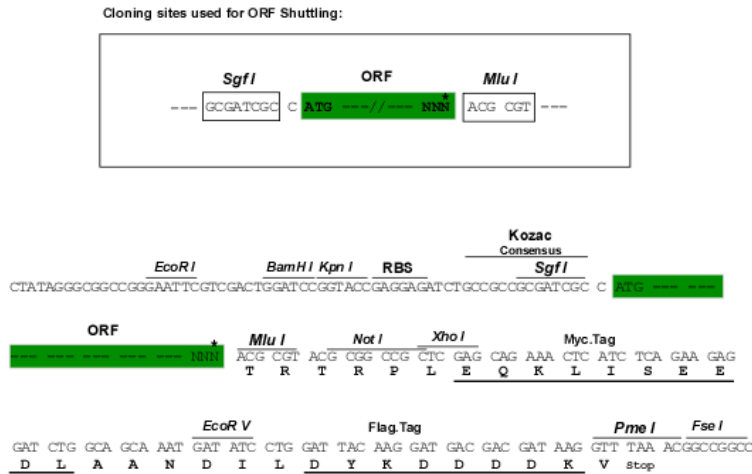
```
MEEKDDSPQADFCLGTALHSWGLWFTTEEGSPSTMLTGIAVGALLALVGVLIILFMFRRLRQFRQAQPT
PQYRFRKRDKVMFYGRKIMRKVTTLPNTLVENTALPRQRARKRTKVLSLAKRILRFKKEYPALQPKEPPP
SLLEADLTFEDVKNSHLPSEVL YMLKNVRVLGHFEKPLFLELCKHIVFVQLQEGEHVFPREPDPSCVV
QDGRLEVICIQDTDGTTEVVVKEVLAGDSVHSLLSILDIIITGHAAPYKTVSVRAAIPSTILRLPAAAFHGVS
EKYPETLVRVQIIMVRLQRVTF LALHNYLGLTTELFNAESQAIPLVSVASVAAGKAKKQVFYGEEERLK
KPPRLQESCDSDHGGGRPAAAGPLLKRSHSVPAPSIRKQILEELEKPGAGDPDPSAPQGGPGSATSDLGM
ACDRARVFLHSDEHPGSSVASKSRKSVMAEIPSTVSQHSHTDETLASRKSDAIFRAAKDLLTLMKL
EDSSLLDGRVALLHVPAGTVVSRQGDQDASILFVVSGLLHVYQRKIGSQEDTCLFLTRPGEMVGLAVLT
GEPLIFTVKANRDCSFLSISKAHFYEIMRKQPTVVLGVAHTVVKRMSSFVRQIDFALDWVEVEAGRAIYR
QGDKSDCTYIML SGRRLSVIRKDDGKKRLAGEYGRGDLVGVVETLTHQARATTVHAVRDELAKLPAGAL
TSIKRRYPQVVTRLIHLLEKILGSLQQGPVTHGQLGLPTEGSKWDLGNPAVNLSVAVMPVSEEVPLTA
FALELEHALSAIGPTLLTSDNIKRRLSAALDSVHEYRLSSWLQQQEDTHRIVLYQVDGTLTPWTQRCV
RQADCILIVGLGDQEPVGELERMLESTAVRAQQLILLHREEGPAPARTVEWLNMRSWCSGHLHLCCPR
RVFSRRSLPKLVEMYKHVFORPPDRHSDFSRRLARVLTGNAIALVLGGGGARGCAQVGVLKALAECPVD
MVGGSISGAFVGLYSEERNYSQMRIRAKQWAEGMTSLMKAALDLTYPITSMFSGAGFNSSIFSFKDQQ
IEDLWIPYFAITTDITASAMRVHTDGLS WYVVRASMSLSGYMPPLCDPKDGHLLMDGGYINNLPAVARS
MGAKVVIADVGSRDETDLTNYGDALSGWLLWKRWNPLATKVKVLNMAEIQTRLAYVCCVRQLEVVKSS
DYCEYL RPPIDSYSTLDFGKFNEICEVGYQHGRVFDIWGRSGVLEKMLRDQQGPKPASAVLTCPNAS
FTDLAEIVSRIEPAKAMVDDSDYQTEYEEELLDVPRDAYADFQSTSAQQGSDLEDESSLRHRHPSLAF
PKLSEGSDDQDG
```

TRTRPLEQKLISEEDLAANDILDYKDDDDKV

Chromatograms: https://cdn.origene.com/chromatograms/mk8005_g05.zip

Restriction Sites: SgfI-MluI

Cloning Scheme:



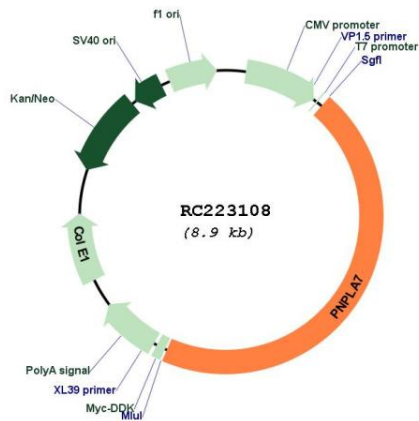
* The last codon before the Stop codon of the ORF

ACCN: NM_001098537

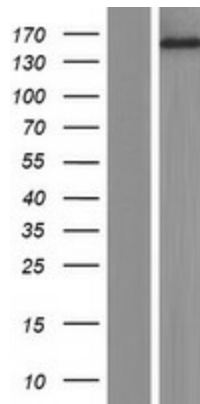
ORF Size: 4026 bp

OTI Disclaimer:	The molecular sequence of this clone aligns with the gene accession number as a point of reference only. However, individual transcript sequences of the same gene can differ through naturally occurring variations (e.g. polymorphisms), each with its own valid existence. This clone is substantially in agreement with the reference, but a complete review of all prevailing variants is recommended prior to use. More info
OTI Annotation:	This clone was engineered to express the complete ORF with an expression tag. Expression varies depending on the nature of the gene.
Components:	The ORF clone is ion-exchange column purified and shipped in a 2D barcoded Matrix tube containing 10ug of transfection-ready, dried plasmid DNA (reconstitute with 100 ul of water).
Reconstitution Method:	<ol style="list-style-type: none">1. Centrifuge at 5,000xg for 5min.2. Carefully open the tube and add 100ul of sterile water to dissolve the DNA.3. Close the tube and incubate for 10 minutes at room temperature.4. Briefly vortex the tube and then do a quick spin (less than 5000xg) to concentrate the liquid at the bottom.5. Store the suspended plasmid at -20°C. The DNA is stable for at least one year from date of shipping when stored at -20°C.
RefSeq:	NM_001098537.1 , NP_001092007.1
RefSeq Size:	4806 bp
RefSeq ORF:	4029 bp
Locus ID:	375775
UniProt ID:	Q6ZV29
Cytogenetics:	9q34.3
Protein Families:	Transmembrane
MW:	148.3 kDa
Gene Summary:	Human patatin-like phospholipases, such as PNPLA7, have been implicated in regulation of adipocyte differentiation and have been induced by metabolic stimuli (Wilson et al., 2006 [PubMed 16799181]).[supplied by OMIM, Jun 2008]

Product images:



Circular map for RC223108



Western blot validation of overexpression lysate (Cat# [LY420634]) using anti-DDK antibody (Cat# [TA50011-100]). Left: Cell lysates from untransfected HEK293T cells; Right: Cell lysates from HEK293T cells transfected with RC223108 using transfection reagent MegaTran 2.0 (Cat# [TT210002]).