

## Product datasheet for **RC223105**

### **KLHL31 (NM\_001003760) Human Tagged ORF Clone**

#### **Product data:**

Product Type:	Expression Plasmids
Product Name:	KLHL31 (NM_001003760) Human Tagged ORF Clone
Tag:	Myc-DDK
Symbol:	KLHL31
Synonyms:	bA345L23.2; BKLHD6; KBTBD1; KLHL
Mammalian Cell Selection:	Neomycin
Vector:	pCMV6-Entry (PS100001)
E. coli Selection:	Kanamycin (25 ug/mL)



[View online »](#)

ORF Nucleotide  
Sequence:

>RC223105 representing NM\_001003760  
Red=Cloning site Blue=ORF Green=Tags(s)

TTTTGTAATACGACTCACTATAGGGCGGCCGGGAATTCGTCGACTGGATCCGGTACCGAGGAGATCTGCC  
GCC**CGATCGCC**

ATGGCACCCAAAAAGAAGATTGTCAAAAAGAACAAAGGAGATATCAATGAGATGACTATAATCGTAGAAG  
ATAGCCCCCTAAACAAACTGAATGCTTTGAATGGGCTCCTAGAGGGAGGCAATGGCCTTAGCTGCATTTT  
TTCTGAACTAACAGATGCTTCTTATGGCCCAACCTCTTGAAGGTTTAAAGTAAAATGCGCAGGAGAAC  
TTCTATGTGACTTAGTCATTGGTACAAAACCAATCCTTTGATGTTTATAAGTCAGTCATGGCTTCAT  
GCAGTGAGTATTTTTACAACATCCTAAAAAAGACCCGCAATTCAGAGGGTGGATCTCAATGATATCTC  
ACCACTAGGCCTGGCCACTGTCATTGCATATGCCTACACTGGAAAGCTCACTCTCTCCTGTATAACAATA  
GGAAGCATTATTTCTGCTGCTGTTTATCTTCAGATCCACTCTTGTAAAGATGTGCAGTGATTTTCTGA  
TACGGGAGATGAGTGTTGAGAATTGCATGTATGTTGTTAATATTGCTGAAACATACTCCCTAAAAATGC  
AAAAGCAGCAGCCAGAAATTTATTCGGGATAACTTCCTTGAATTTGCAGAAATCGGATCAGTTTATGAAA  
CTTACATTTGAACAAATTAATGAACTTCTTATAGATGATGACTTACAGTTGCCTTCTGAGATAGTAGCAT  
TCCAGATTGCAATGAAATGGTTAGAATTTGACCAAAAAGAGAGTAAAATACGCTGCAGATCTTTTGTAGCAA  
TATTCGCTTTGGTACCATCTCTGCACAAGACCTGGTCAATTATGTTCAATCCGTACCAAGAATGATGCAA  
GATGCTGATTGTCACAGACTTCTCGTAGATGCTATGAACTACCACTTGCCTCCATATCATCAAAACACAT  
TGCAATCTAGGCGAACAAGAATCCGAGGTGGCTGCCGAGTCCCTCGTCACTGTTGGGGGACGCCAGGCCCT  
TACTGAGAAGTCCCTTAGCAGAGACATCTGTATAGAGACCCTGAAAATGGATGGAGCAAGCTTACGGAA  
ATGCCAGCCAAAAGTTTTAATCAGTGTGTGGCTGTGATGGATGGATTTCTTTATGTAGCCGGTGGTGAAG  
ACCAGAATGATGCAAGAAATCAAGCCAAGCATGCAGTCAGCAATTTCTGCAGATACGATCCCGCTTCAA  
CACCTGGATACACCTGGCCAGCATGAACCAAGAAGCGCACGCACTTCAGCCTGAGCGTGTTCAACGGGCTC  
GTGTACGCCGCGGGCGGCCGCAACGCAGAAAGGAAGCCTGGCCTCGCTGGAGTGCTACGTGCCCTCCACCA  
ATCAGTGGCAGCCGAAGACGCCCTGGAGGTGGCGGCTGCTGCCACGCTAGCGCGGTGCGCCAGCGCCG  
CGTGCTGGTGACCGGAGGCTACATAGCCAACGCCTACTCGCGCTCTGTGTGCGCTACGACCCGGCCAGC  
GACTCGTGGCAGGAGCTGCCAACCTCAGCACACCCCGGGGCTGGCACTGCGCGGTACGCTGAGCGACA  
GAGTGACGTGATGGCGGCAGCCAGCTGGGGCCGCGGGGAGCGGTGGACGTGCTCACCGTGGAGTG  
CTACAGCCCCGCGACCGCCAGTGGAGCTACGCGGCGCCGCTGCAGGTGGGAGTGAGCACTGCGGGCGTC  
TCGGCGCTGCATGGCCGCGCCTACCTGGTGGGGGCTGGAACGAGGGCGAGAAGAAGTACAAGAAGTGCA  
TCCAGTGCTTCAGCCCCGAGCTCAACGAGTGGACGGAGGACGACGAGCTACCCGAGGCCACTGTCGGCGT  
GTCCTGTGACCCCTCTCGATGCCCAACAACGTGACTCGGGAATCCCGGGCCAGTTCGGTATCTTCTGTG  
CCAGTCAGTATC

**ACGCGT**ACGCGGCCGCTCGAGCAGAACTCATCTCAGAAGAGGATCTGGCAGCAATGATATCCTGGATT  
ACAAGGATGACGACGATAAGGTTTAA

**Protein Sequence:** >RC223105 representing NM\_001003760  
Red=Cloning site Green=Tags(s)

```
MAPKKKIVKKNKGDINEMTIIVEDSPLNKLNALNGLLEGGNGLSCISSELT DASYGPNLLEGLSKMRQEN
FLCDLVIGTKTKSFDVHKSVMACSEYFYNILKKDPSIQRVLDNDISPLGLATVIAYAYTGKLTLSLYTI
GSIISAAYVLQIHTLVKMCSDFLIREMSVENCMYVNNIAETYSLNKAKAAAQKFI RDNFLFEAESDQFMK
LTFEQINELLIDDDLQLPSEIVAFQIAMKWLEFDQKRVKYAADLLSNIRFGTISAQDLVNYVQSVPRMMQ
DADCHRLLVDAMNYHLLPYHQNTLQSRRTIRGGCRVLVTVGGRPGLTEKSLSRDILYRDPENGWSKLTE
MPAKSFNQCVAVMDGFLYVAGGEDQNDARNQAKHAVSNFCRYDPRFNTWIHLASMNQKRTHFSLSVFNGL
VYAAGGRNAEGLASLECYVPSTNQWQPKTPLEVARCCHASAVADGRVLVTGGYIANAYSRSVCAYDPAS
DSWQELPNLSTPRGWHCAVTLSDRVYVMGGSQLGPRGERVDLTV EYCYPATGQWSYAAPLQVGVSTAGV
SALHGRAYLVGGWNEGEKKYKCKIQCFSPELNEWTEDELPEATVGVSCCTL SMPNNVTRESRASSVSSV
PVSI
```

TRTRPLEQKLISEEDLANDILDYKDDDDKV

**Chromatograms:** [https://cdn.origene.com/chromatograms/mk8001\\_g05.zip](https://cdn.origene.com/chromatograms/mk8001_g05.zip)

**Restriction Sites:** SgfI-MluI

**Cloning Scheme:**



**ACCN:** NM\_001003760

**ORF Size:** 1902 bp

**OTI Disclaimer:** The molecular sequence of this clone aligns with the gene accession number as a point of reference only. However, individual transcript sequences of the same gene can differ through naturally occurring variations (e.g. polymorphisms), each with its own valid existence. This clone is substantially in agreement with the reference, but a complete review of all prevailing variants is recommended prior to use. [More info](#)

**OTI Annotation:** This clone was engineered to express the complete ORF with an expression tag. Expression varies depending on the nature of the gene.

**Components:** The ORF clone is ion-exchange column purified and shipped in a 2D barcoded Matrix tube containing 10ug of transfection-ready, dried plasmid DNA (reconstitute with 100 ul of water).

**Reconstitution Method:**

1. Centrifuge at 5,000xg for 5min.
2. Carefully open the tube and add 100ul of sterile water to dissolve the DNA.
3. Close the tube and incubate for 10 minutes at room temperature.
4. Briefly vortex the tube and then do a quick spin (less than 5000xg) to concentrate the liquid at the bottom.
5. Store the suspended plasmid at -20°C. The DNA is stable for at least one year from date of shipping when stored at -20°C.

**RefSeq:** [NM\\_001003760.5](#)

**RefSeq Size:** 1905 bp

**RefSeq ORF:** 1905 bp

**Locus ID:** 401265

**UniProt ID:** [Q9H511](#)

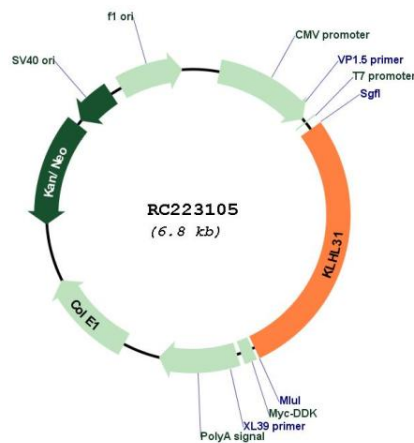
**Cytogenetics:** 6p12.1

**Protein Families:** Transmembrane

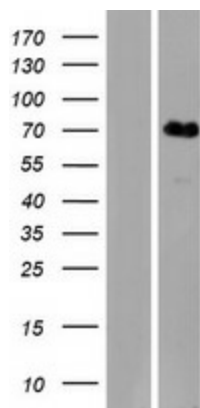
**MW:** 70.1 kDa

**Gene Summary:** Transcriptional repressor in MAPK/JNK signaling pathway to regulate cellular functions. Overexpression inhibits the transcriptional activities of both the TPA-response element (TRE) and serum response element (SRE).[UniProtKB/Swiss-Prot Function]

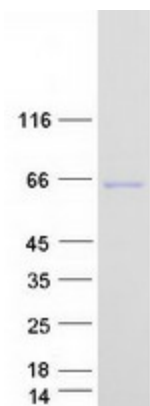
### Product images:



Circular map for RC223105



Western blot validation of overexpression lysate (Cat# [LY423999]) using anti-DDK antibody (Cat# [TA50011-100]). Left: Cell lysates from untransfected HEK293T cells; Right: Cell lysates from HEK293T cells transfected with RC223105 using transfection reagent MegaTran 2.0 (Cat# [TT210002]).



Coomassie blue staining of purified KLHL31 protein (Cat# [TP323105]). The protein was produced from HEK293T cells transfected with KLHL31 cDNA clone (Cat# RC223105) using MegaTran 2.0 (Cat# [TT210002]).