

Product datasheet for RC223101

CAPS1 (CADPS) (NM_183393) Human Tagged ORF Clone

Product data:

Product Type:	Expression Plasmids
Product Name:	CAPS1 (CADPS) (NM_183393) Human Tagged ORF Clone
Tag:	Myc-DDK
Symbol:	CAPS1
Synonyms:	CADPS1; CAPS; CAPS1; UNC-31
Mammalian Cell Selection:	Neomycin
Vector:	pCMV6-Entry (PS100001)
E. coli Selection:	Kanamycin (25 ug/mL)
ORF Nucleotide Sequence:	>RC223101 representing NM_183393 Red=Cloning site Blue=ORF Green=Tags(s)

TTTTGTAATACGACTCACTATAGGGCGGCCGGAATTCGTCGACTGGATCCGGTACCGAGGAGATCTGCC
GCC**CGATCGCC**

ATGCTGGACCCTTCGTCCAGCGAAGAAGAATCGGATGAGATCGTGGAGGAGGAGAGCGGCAAGGAGGTGC
TCGGCTCGGCCCGTCCGGCGCGCCTGTCTCCAGCCGTACCAGCGAGGGCTCGGCCGGCAGCGCCGG
GCTGGGGGGCGGGCGCGCCGGCGCGGAGCCGGGGTGGGTGCAGGCGCGGGGGGCGAGCGCGCGAGC
AGCGCGCGGGCCGGGGGCTGCAACCAGCAGCCGCGCTGGCGCGGGCCGCCCTCCAGCCCCAGCC
CGTCGGTGGTGTGAGCGAGAAGGAGAAGGAAGAGTTGGAGCGGCTGCAGAAAGAGGAGGAGAGGAAAGAA
GAGGCTGCAGCTGTATGTGTTCTGTGATGCGCTGCATCGCCTACCCCTTTAATGCCAAGCAGCCCACCGAC
ATGGCTCGCCGGCAGCAGAAGATCAGCAAACAGCAGCTGCAGACAGTCAAGGACCGTTTTAGGCTTTCC
TCAATGGGAAACCCAGATCATGGCTGACGAAGCCTTCATGAACGCTGTGCAGAGTTACTATGAGGTGTT
CCTGAAGAGCGACCGTGTGGCCCGCATGGTTCAGAGTGGAGGCTGTTCCGCCAACGACTCCCGGGAGGTC
TTCAAGAAGCACATTGAGAAGAGAGTGCAGCCTGCCTGAGATTGACGGCTCAGCAAGGAGACTGTGC
TGAGCTCCTGGATGGCCAAATTTGATGCCATCTACCGTGGAGAAGAGGACCCGCGGAAGCAGCAGGCCCG
GATGACAGCCAGCGCAGCCTCCGAGCTGATTCTGAGCAAGGAGCAACTCTATGAGATGTTCCAGAACATT
CTTGGGATCAAGAAGTTTCAACATCAGCTCCTTTACAATGCCTGCCAGCTGGACAATCCAGATGAGCAAG
CAGCCCAGATCAGACGAGAGCTGGATGGAGTCTACAAATGGCAGACCAATAGCCAGGGAACGCAAAAT
TCCCAAGTTTGTATCCAAAGAAATGAAAAACATGTACATTGAGGAGCTGAAGTCACTGTCAACCTGCTC
ATGGCCAACTTGAGAGCATGCCGGTATCCAAAGGCGGGGAGTTCAAGCTCCAGAAACTCAAACGCAGCC
ACAATGCTTCCATCATCGACATGGGCGAGGAGAGTGAGAACCAGCTCTCCAAGTCAGATGTCGTGCTGTC
TTTCTCATTGGAGGTGTAATTATGGAAGTCCAAGGCCTCAAATCTTTGGCTCAAATCGCATCGTATAT
TGCACAATGGAGGTGGAAGGAGGAGAGAACTACAGACTGATCAGGCCGAGGCTTCTAAACCAACCTGGG
GCACCCAGGTGACTTCTCCACAACCCATGCACTGCCAGCTGTGAAGGTGAAGCTGTTACAGAGAGCAC
AGGCGTCTGGCGTTGGAGGACAAGGAGCTTGGCGGGTATTCTCCATCCACCCGAACAGCCCCAAA



[View online »](#)

CAGTCAGAGTGGCACAAAATGACAGTCTCCAAAACTGCCCGACCAAGATCTCAAAATCAAACCTTGCTG
TCCGAATGGATAAGCCTCAAACATGAAGCATTCTGGGTATTTATGGGCCATCGGTAAAGAATGTCTGGAA
GAGATGGAAGAAAAGGTTTTTTGTATTGGTGCAGGTGAGTACACGTTTGCCATGTGCAGTTATCGG
GAGAAGAAAGCGGAGCCTCAGGAACTTCTACAATTGGATGGCTACACTGTGGATTACACCGACCCCGAGC
CAGGTTTGGAGGGTGGCCGAGCCTTCTCAATGCTGTCAAGGAGGGAGACACCGTGATATTTGCCAGTGA
CGATGAACAAGACCGCATCCTGTGGTCCAGGCCATGTATCGGCCACGGGGCAGTCACACAAGCCTGTG
CCCCGACCCAAGTCCAGAACTCAACGCCAAGGGAGGAAATGTACCTCAGCTGGATGCCCTATCTCTC
AATTTTACGCAGATAGAGCTCAAAAACATGGCATGGATGAATTTATCTCTTCCAACCCCTGTAACCTTGA
CCACGCTTCCCTCTTTGAGATGGCTGGTTCAGTCTGGCCAGGTGTTTGTACTAGACGAGTATTGCGCC
CGAAATGGAGTCCGGGGGTGTCACCGACATCTCTGCTACCTCAGAGACTTGCTTGAACGGGCAGAAAATG
GCGCCATGATCGACCCACCCCTTCTTCACTACAGCTTTGCCTTCTGTGCATCCCATGTCCATGGGAACAG
GCCTGATGGAATTGAACTGTGACTGTTGAAGAAAAGAACGTTTTGAAGAAATCAAAGAGAGGCTCCGA
GTTCTGCTAGAAAATCAGATTACACATTTAGGTATTGCTTTCCATTTGGTCGACCTGAAGGTGCTTTGA
AAGCTACTCTCACTCTTGGAAAGGGTTTTGATGAAAGATATTGTTACCCAGTGCCACAAGAGGAGGT
AAAACAGTTATCCGTAATGTCTGGAACAGGCTGCGTTAGTCAACTATTCTCGGCTCTCAGAGTATGCC
AAAATCGAAGAAAATGTAGGCCGTTAATCACTCTGCCAAAAAGCTTGAAGATACAATACGTCTTGCTG
AACTAGTCATTGAAGTTCTTTCAGCAAAAATGAGGAGCACCACGCAGAGGCCTTTGCGTGGTGGTCAGATT
AATGGTGGAGCATGCGGAGACGTTCTGTCACTCTTTCAGTAGACATGGATGCAGCCTTAGAGGTGCAA
CCTCCAGACACATGGGACAGTTTTCCACTATTTCACTGCTGAATGATTTCTCCGACTGACTATAATT
TGTGCAATGGAATAATTCACAAACACCTGCAAGACCTGTTTGGCCCACTGTTGTTAGATATGGGATCT
GATGGAGTCTCAATTGCACAATCCATTACAGGGGCTTTGAGCGGGAGTCATGGGAACCAAGTCAATAAT
GGGTGAGGCACCTCAGAAGATCTGTTTTGAAAACCTTACGCGCTTTCAGACCTTATTTCGGACCTGCAC
GGCTGAAGAAGAGTTTTGAAAAGCACCTGGAACAACGGCTGAAGTTGATGGCAAGTGACATGATCGAATC
TTGTGTCAAAGAACCAGGATTGCATTTGAAGTTAAGCTGCAAAAAACCAGTCGATCAACAGATTTTCGA
GTCCACAGTCAATATGCACCATGTTAATGTTATGGTTGATGCCAAAGCTCAATCAACAAAACCTTTCGA
GCATGGAATGGGCCAAGAGCATCAATACCATTCAAAAATAGACGAACTAATTGAAGAAAACCTGTTAAAGA
AATGATAACACTCTTGGTTGCAAAGTTCGTTACTATCTTGAAGGAGTGTGGCAAAAATATCCAGATAT
GACGAAGGACTTTGTTTTCTTCTTTCTGTCAATTTACCGTGAAGGCAGCTTCCAATATGTGGATGTAC
CTAAACCCGGGATGGACGTGGCCGACGCCTACGTGACTTTCGTCGCCATTCTCAGGATGCTCCTGCGTGA
TAAGGTCAATGAGGAGATGTACATAGAAAGTTATTTGATCAATGGTACAACAGCTCCATGAACGTGATC
TGCACCTGGTTGACGGACCGGATGGACTTACAGCTTCATATTTATCAGTTGAAAACACTAATTAGGATGG
TAAAGAAAACCTACAGAGATTTCCGATTGCAAGGGTCCCTGGACTCCACCTTAAACAGCAAGACCTATGA
AACGATCCGGAACCGTCTCACTGTGGAGGAAGCCACAGCATCAGTGAGTGAAGGTGGGGGACTGCAGGGC
ATCAGCATGAAGGACAGCGATGAGGAAGACGAAGAAGACGAT

ACGCGTACGCGGCCGCTCGAGCAGAACTCATCTCAGAAGAGGATCTGGCAGCAATGATATCCTGGATT
ACAAGGATGACGACGATAAGGTTTAA

Protein Sequence: >RC223101 representing NM_183393
 Red=Cloning site Green=Tags(s)

```

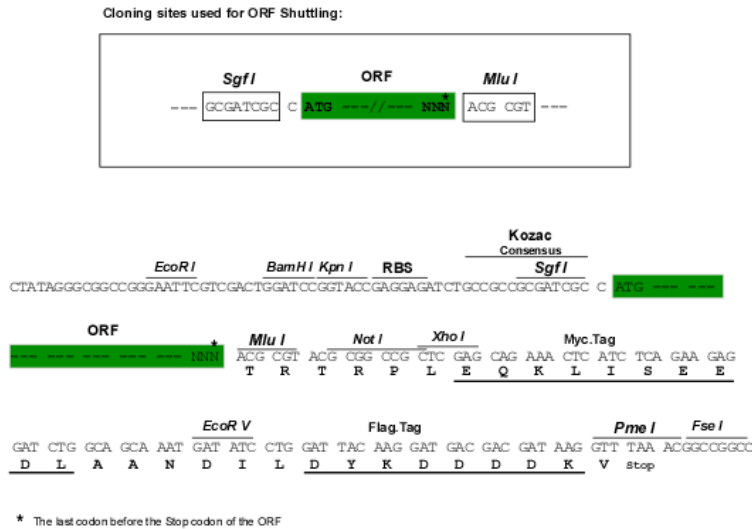
MLDPSSEEESEIVEEEESGKEVLGSAPSGARLSPSRTSEGSAGSAGLGGGGAGAGAGVGGGGGGSGAS
SGGGAGGLQPSSRAGGGRPSSPSPSVVSEKEKEELERLQKEEEERKKRLQLYVFMRCIAYPFNAKQPTD
MARRQQKISKQQLQTVKDRFQAFNLGETQIMADEAFMNAVQSYVEVFLKSDRVARMVQSGGCSANDSREV
FKKHIEKRVRSLEIDGLSKETVLSWMAKFDAIYRGEEDPRKQQARMTASAASELILSKEQLYEMFQNI
LGIKKFEHQLLYNACQLDNPDEQAAQIRRELDGRLQMAQIARERKPKFVSKEMENMYIEELKSSVLL
MANLESMPVSKGGEFKLQKLRSHNASIIDMGEENSEQLSKSDVVLFSLEVVIMEVQGLKSLAPNRIVY
CTMEVEGGEKLQTDQAEASKPTWGTQGDFSTTHALPAVKVKLFTESTGLVALEDKELGRVILHPTNSPK
QSEWHKMTVSKNCPDQDLKIKLAVRMDKPNMKHSGYLWAIKKNVWRWKKRFFVLVQVSQYTFAMCSYR
EKKAEPQELLQLDGYTVDYTDPPGLEGGRAFFNAVKEGDTVIFASDDEQDRILWQAMYRATGQSHKPV
PPTQVQKLNAGGNVPQLDAPISQFYADRAQKHGMDEFISSNPCNFDHASLFEMGWFSFGQVFLDEYCA
RNGVVRGCHRHLCYLRDLLERAENGAMIDPTLLHYSFAFCASHVHGNRPDGI GTVTVEEKERFEEIKERLR
VLLNQITHFRYCFPFGRPEGALKATLSLLERVLMKDIVTPVPQE EVKTVIRKCLEQAALVNYSRLSEYA
KIEENVGLRITPAKKLEDTIRLAELVIEVLQQNEEHAEFAWWSDLMVEHAETFLSLFAVDMDAALEVQ
PPDTWDSFPLFQLLNDFLRTDYNLCNGKFHKLQDLFAPLVVRYVDLMESSIAQS IHRGFERESWEPVNN
GSGTSEDLFWKLDALQTFIRDHLWPEEEFGKHLEQRLKLMASDMIESCVRTRIAFEVKLQKTSRSTDFR
VPQSICTMFNVMDAKAQSTKLCMEMGQEHQYHSKIDELIEETVKEMITLLVAKFVTILEGLAKLSRY
DEGTLFSSFLSFTVKAASKYVDVPKPGMDVADAYVTFVRHSQDVL RDKVNEEMYIERLFDQWYNSMNI
CTWL TDRMDLQLHIYQLKTLIRMVKTYRDFRLQGVLDSTLNSKTYETIRNRLTVEEATASVSEGGGLQG
ISMKDSDEEDEEDD
  
```

TRTRPLEQKLI SEEDLAANDILDYKDDDDKV

Chromatograms: https://cdn.origene.com/chromatograms/mk8045_f11.zip

Restriction Sites: SgfI-MluI

Cloning Scheme:

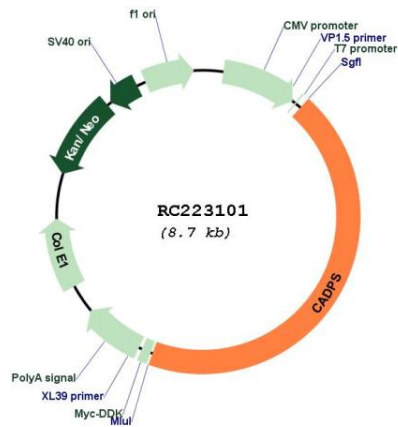


ACCN: NM_183393

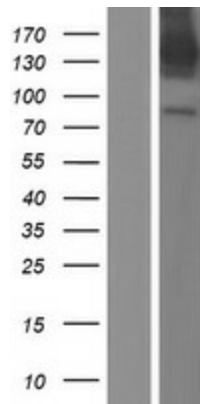
ORF Size: 3822 bp

OTI Disclaimer:	<p>Due to the inherent nature of this plasmid, standard methods to replicate additional amounts of DNA in E. coli are highly likely to result in mutations and/or rearrangements. Therefore, OriGene does not guarantee the capability to replicate this plasmid DNA. Additional amounts of DNA can be purchased from OriGene with batch-specific, full-sequence verification at a reduced cost. Please contact our customer care team at custsupport@origene.com or by calling 301.340.3188 option 3 for pricing and delivery.</p> <p>The molecular sequence of this clone aligns with the gene accession number as a point of reference only. However, individual transcript sequences of the same gene can differ through naturally occurring variations (e.g. polymorphisms), each with its own valid existence. This clone is substantially in agreement with the reference, but a complete review of all prevailing variants is recommended prior to use. More info</p>
OTI Annotation:	<p>This clone was engineered to express the complete ORF with an expression tag. Expression varies depending on the nature of the gene.</p>
Components:	<p>The ORF clone is ion-exchange column purified and shipped in a 2D barcoded Matrix tube containing 10ug of transfection-ready, dried plasmid DNA (reconstitute with 100 ul of water).</p>
Reconstitution Method:	<ol style="list-style-type: none">1. Centrifuge at 5,000xg for 5min.2. Carefully open the tube and add 100ul of sterile water to dissolve the DNA.3. Close the tube and incubate for 10 minutes at room temperature.4. Briefly vortex the tube and then do a quick spin (less than 5000xg) to concentrate the liquid at the bottom.5. Store the suspended plasmid at -20°C. The DNA is stable for at least one year from date of shipping when stored at -20°C.
RefSeq:	NM_183393.3
RefSeq Size:	5248 bp
RefSeq ORF:	3825 bp
Locus ID:	8618
UniProt ID:	Q9ULU8
Cytogenetics:	3p14.2
MW:	143.9 kDa
Gene Summary:	<p>This gene encodes a novel neural/endocrine-specific cytosolic and peripheral membrane protein required for the Ca²⁺-regulated exocytosis of secretory vesicles. The protein acts at a stage in exocytosis that follows ATP-dependent priming, which involves the essential synthesis of phosphatidylinositol 4,5-bisphosphate (PtdIns(4,5)P₂). Alternative splicing has been observed at this locus and three variants, encoding distinct isoforms, are described. [provided by RefSeq, Aug 2008]</p>

Product images:



Circular map for RC223101



Western blot validation of overexpression lysate (Cat# [LY405265]) using anti-DDK antibody (Cat# [TA50011-100]). Left: Cell lysates from untransfected HEK293T cells; Right: Cell lysates from HEK293T cells transfected with RC223101 using transfection reagent MegaTran 2.0 (Cat# [TT210002]).