

## Product datasheet for **RC223098**

### ZNF91 (NM\_003430) Human Tagged ORF Clone

#### Product data:

Product Type:	Expression Plasmids
Product Name:	ZNF91 (NM_003430) Human Tagged ORF Clone
Tag:	Myc-DDK
Symbol:	ZNF91
Synonyms:	HPF7; HTF10
Mammalian Cell Selection:	Neomycin
Vector:	pCMV6-Entry (PS100001)
E. coli Selection:	Kanamycin (25 ug/mL)
ORF Nucleotide Sequence:	>RC223098 representing NM_003430 Red=Cloning site Blue=ORF Green=Tags(s)

TTTTGTAATACGACTCACTATAGGGCGGCCGGAATTCGTCGACTGGATCCGGTACCGAGGAGATCTGCC  
GCC**CGATCGCC**

ATGCCAGGAACCCCTGGAAGCCTAGAAATGGGACTGTTGACATTTAGGGATGTGGCCATAGAATTCTCTC  
CGGAGGAGTGGCAATGTCTGGACACTGCACAGCAGAATTTATATAGGAATGTGATGTTAGAGAACTACAG  
AAACCTGGCCTTCTGGTATTGCTCTCTAAGCCAGACCTGATTACTTATCTGGAGCAAGGAAAAGAG  
CCCTGGAATATGAAGCAACATGAGATGGTGGATGAACCCACAGGTATATGTCCTCATTTCTCAAGACT  
TTTGGCCAGAGCAGAGCATGGAAGATTTCTTTCAAAAAGTATTACTGAGAAAATATGAAAATGTGGACA  
TGAGAATTTACAGTTAAGAAAAGTTGTAAGAGTGGATGAGTGAAGGTGCACAAAGAAGTTATAAT  
AACTTAACCAAGTGTCTACAACCTGCCAGAGCAAAGTATTTCAATGTGGGAAATATTTGAAAGTCTTCT  
ATAAATTTTTAAATTCAAACAGACATACGATAAGACATACCGAAAGAAATGCTTCAAATGTAAAAATG  
TGCAAGTCATTTGCATCCGTTTACACAAAACCAACATAAATGCGTTTATATTACAGAGAAGTCTGT  
AAATGTAAGAATGTGAAAAACCTTTCATTGGTCCTCAACCTTACTAATCATAAGGAAATTCATACTG  
AAGATAAACCCACAAAATGTGAAGAATGTGGCAAAGCTTTAAGCAGCTCAACCCTTACTACACATAA  
AATAATCTGTGCTAAAGAGAAAACTACAAGTGTGAAGAATGTGGCAAAGCATTCTATGGTCCTCAACC  
CTAACTAGACATAAGAGGATACACACTGGAGAGAAACCCACAAAATGTGAAGAATGTGGCAAAGCTTTA  
GCCATTCTCAACCCCTGCTAAACATAAGAGAATTCATACTGGAGAGAAACCCACAAAATGTGAAGAATG  
TGCAAAGCTTTTAGCCATTCTCAGCCCTTGCTAAACATAAGAGAATTCATACTGGAGAGAAACCCCTAC  
AAATGTAAGAATGTGGCAAAGCTTTTAGCAATTCCTCAACCCCTGCTAATCATAAGATAACTCATACTG  
AAGAGAAACCCACAAAATGTGAAGAATGTGACAAAACCTTTAAGCGACTCTCAACCCTTACTAAACATAA  
AATAATACATGCTGGAGAGAACTCTACAATGTGAAGAATGTGGCAAAGCTTTAATCGATCTTCAAAT  
CTTACTATACATAAGTTTATTCACTGGAGAGAAACCTTACAAGTGTGAAGAATGTGGCAAAGCATTTA  
ACTGGTCCTCAAGCCTTACTAAACATAAAAGATTTCACTAGAGAGAAACCCCTCAAATGTAAGAATG  
TGCAAAGGATTTATATGGTCTTCAACCCCTAAGAGATAACACTGGAGAGAAAGCCCTAC



[View online >](#)

AAATGTGAAGAATGTGGCAAAGCTTTTAGGCAATCCTCAACCCTTACTAACATAAGATAATTCATACTG  
GAGAGAAACCCTACAAATTTGAAGAATGTGGCAAAGCTTTTAGACAATCCTTAACCCTTAATAAACATAA  
GATAATTCATAGTAGAGAGAAACCCTACAAATGTAAAGAATGTGGCAAAGCTTTTAAGCAATTCCTCAACC  
CTTACTACACATAAAAATAATTCATGCTGGAAAGAACTCTACAAATGTGAAGAATGTGGCAAAGCTTTTA  
ATCATTCTCAAGTCTTCTACACATAAGATAATTCATACTGGAGAGAAGTCTTACAAGTGTGAAGAATG  
TGGCAAAGCATTCTATGGTCCTCAACCCTAAGAAGACATAAGAGGATACACACTGGAGAGAAACCCTAC  
AAATGTGAAGAATGTGGCAAAGCTTTTAGCCATTCTTCAGCCCTTGCTAACATAAAGAGAATTCATACTG  
GAGAGAAACCCTACAAATGTAAAGAATGTGGCAAAGCTTTTAGCAATTCCTCAACCCTTGCTAATCATAA  
GATAACTCATACTGAAGAGAAACCCTACAAATGTAAAGAATGTGACAAAACCTTTTAAGCGACTCTCAACC  
CTTACTAACATAAAAATAATACATGCTGGAGAGAACTCTACAAATGTGAAGAATGTGGCAAAGCTTTTA  
ATCGATCTTCAAATCTTACTATACATAAGTTTATTACTACTGGAGAGAAACCCTTACAAGTGTGAAGAATG  
TGGCAAAGCATTAACTGGTCCTCAAGCCTTACTAACATAAAAAGAATTCATACTAGAGAGAAACCCTTC  
AAATGTAAAGAATGTGGCAAAGCATTATATGGTCTTCAACCCTAACTAGACATAAGAGGATACACACTG  
GAGAGAAGCCCTACAAATGTGAAGAATGTGGCAAAGCTTTTAGCCGTTCTCAACCCTTACTAAGCATAA  
GACAATTCATACTGGAGAGAAACCCTACAAATGTAAAGAATGTGGCAAAGCTTTTAAGCACTCCTCAGCC  
CTTGCTAACATAAAAATAATACATGCTGGAGAGAACTCTACAAATGTGAGGAATGTGGCAAAGCTTTTA  
ATCAATCTTCAAATCTTACGACACATAAGATAATTCATACTAAAGAGAAACCCTTCCAAGAGTGAAGAATG  
TGACAAAGCATTATCTGGTCCTCAACCCTTACTGAACATAAGAGAATTCATACCAGAGAGAAACCCTAC  
AAATGTGAAGAATGTGGCAAAGCATTAGCCAGCCTTCACACCTTACTACACATAAGAGGATGCACACTG  
GAGAGAAACCCTACAAATGTGAAGAATGTGGCAAAGCTTTTAGCCAATCCTCAACCCTTACTACACATAA  
GATAATTCATACTGGAGAGAAACCCTACAAATGTGAAGAATGTGGCAAAGCTTTTAGGAAATCTTCAACT  
CTTACTGAACATAAGATAATTCATACTGGAGAGAAACCCTACAAATGTGAAGAATGTGGCAAAGCATTTA  
GCCAATCCTCAACCCTAACTAGACATACGAGGATGCACACTGGAGAGAAACCATACAAATGTGAAGAATG  
TGGGAAAGCTTTAATCGATCCTCAAAGCTTACTACACATAAGATAATTCATACTGGAGAGAAACCCTTAC  
AAGTGTGAAGAATGTGGCAAAGCATTATATCCTCAACCCTAAATGGACATAAGAGAATTCATACTA  
GAGAGAAACCCTACAAATGTGAAGAATGTGGCAAAGCATTAGCCAATCTTCAACCCTAACTAGACATAA  
GAGGTTGCACACCGGAGAGAAACCCTACAAATGTGGAGAATGTGGCAAAGCCTTTAAAGAGTCTCAGCT  
CTTACTAACATAAGATAATTCACACTGGAGAGAAACCCTACAAATGTGAAAAATGTTGCAAAGCCTTTA  
ACCAGTCTTCAATCCTTACTAACCATAAGAAAATTCATACTATCACACCTGTAATCCCCTACTTTGGGA  
GGCCGAGGCGGGCGGATCAGGAGTCAGGAGATGGAGACCATCCTGGCTAACACAGTGAACCCCTTCTC  
TAC

ACGCGTACGCGGCGCTCGAGCAGAACTCATCTCAGAAGAGGATCTGGCAGCAAATGATATCCTGGATT  
ACAAGGATGACGACGATAAGGTTTAA

**Protein Sequence:** >RC223098 representing NM\_003430  
 Red=Cloning site Green=Tags(s)

MPGTPGSLEMGLLTFRDVAIEFSPEEWQCLDTAQQNLYRNVMLNRYRNLAFGLGIALSKPDLITYLEQGKE  
 PWNMKQHEMVDEPTGICPHFPQDFWPEQSMEDSFQKVLRLRKYKCGHENLQLRKGCKSVDECKVHKEGYN  
 KLNQCLTTAQSKVFCQGYLKVYKFLNSNRHTIRHTGKKCFKCKKCVKSF CIRLHKTQHKCVYITEKSC  
 KCKECEFTHWSSSTLTNHKEIHTEDKPYKCEECGKAFKQLSTLTTHKIIICAKEKIYKCEECGKAFWSST  
 LTRHKRIHTGEKPYKCEECGKAFSHSSSTLAKHKRIHTGEKPYKCEECGKAFSHSSALAKHKRIHTGEKPY  
 KCKEKGKAFSNSSTLANHKIHTTEEPYKCKECDKTFKRLSTLTTHKIIHAGEKLYKCEECGKAFNRSSN  
 LTIHKFIHTGEKPYKCEECGKAFNWSSSLTKHKRFHTREKPFKCKEKGKFIWSSTLTRHKRIHTGEKPY  
 KCEECGKAFRQSSTLTTHKIIHTGEKPYFEKCGKAFRQSLTLNKHKIIHSREKPYKCKEKGKAFKQFST  
 LTTHKIIHAGKLYKCEECGKAFNHSSSLSTHKIHTGEKSYKCEECGKAFWSSTLRRHKRIHTGEKPY  
 KCEECGKAFSHSSALAKHKRIHTGEKPYKCKEKGKAFSNSSTLANHKIHTTEEPYKCKECDKTFKRLST  
 LTKHKIIHAGEKLYKCEECGKAFNRSSNLTIHKFIHTGEKPYKCEECGKAFNWSSSLTKHKRIHTREKPF  
 KCKEKGKAFIWSSTLTRHKRIHTGEKPYKCEECGKAFSRSSSTLTTHKTIHTGEKPYKCKEKGKAFKSSA  
 LAKHKIIHAGEKLYKCEECGKAFNQSSNLTTHKIIHTKEKPSKSECDKAFIWSSTLTEHKRIHTREKPY  
 KCEECGKAFSQPSHLTTHKRMHTGEKPYKCEECGKAFSQSSSTLTTHKIIHTGEKPYKCEECGKAFRKSST  
 LTEHKIIHTGEKPYKCEECGKAFSQSSSTLTRHTRMHTGEKPYKCEECGKAFNRSSKLTTHKIIHTGEKPY  
 KCEECGKAFISSSTLNHGKRIHTREKPYKCEECGKAFSQSSSTLTRHKRLHTGEKPYKCGEKGKAFKESSA  
 LTKHKIIHTGEKPYKCKEKGKAFNQSSILTTHKIIHTIPVIPLLWEAEGGSRGQEMETILANTVKPLL  
 Y

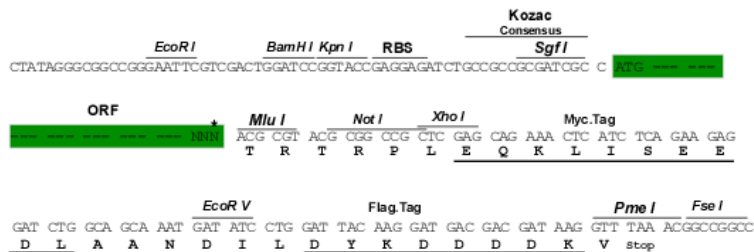
TRTRPLEQKLISEEDLAANDILDYKDDDDKV

**Restriction Sites:**

SgfI-MluI

**Cloning Scheme:**

Cloning sites used for ORF Shuttling:



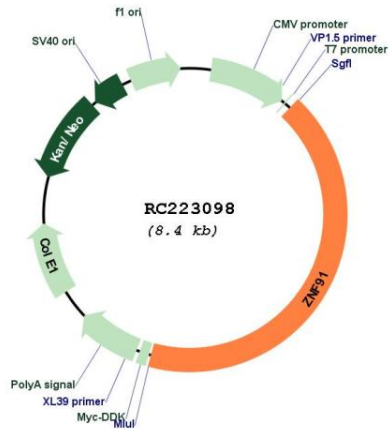
\* The last codon before the Stop codon of the ORF

**ACCN:** NM\_003430

**ORF Size:** 3573 bp

<b>OTI Disclaimer:</b>	<p>Due to the inherent nature of this plasmid, standard methods to replicate additional amounts of DNA in E. coli are highly likely to result in mutations and/or rearrangements. Therefore, OriGene does not guarantee the capability to replicate this plasmid DNA. Additional amounts of DNA can be purchased from OriGene with batch-specific, full-sequence verification at a reduced cost. Please contact our customer care team at <a href="mailto:custsupport@origene.com">custsupport@origene.com</a> or by calling 301.340.3188 option 3 for pricing and delivery.</p> <p>The molecular sequence of this clone aligns with the gene accession number as a point of reference only. However, individual transcript sequences of the same gene can differ through naturally occurring variations (e.g. polymorphisms), each with its own valid existence. This clone is substantially in agreement with the reference, but a complete review of all prevailing variants is recommended prior to use. <a href="#">More info</a></p>
<b>OTI Annotation:</b>	This clone was engineered to express the complete ORF with an expression tag. Expression varies depending on the nature of the gene.
<b>Components:</b>	The ORF clone is ion-exchange column purified and shipped in a 2D barcoded Matrix tube containing 10ug of transfection-ready, dried plasmid DNA (reconstitute with 100 ul of water).
<b>Reconstitution Method:</b>	<ol style="list-style-type: none"> <li>1. Centrifuge at 5,000xg for 5min.</li> <li>2. Carefully open the tube and add 100ul of sterile water to dissolve the DNA.</li> <li>3. Close the tube and incubate for 10 minutes at room temperature.</li> <li>4. Briefly vortex the tube and then do a quick spin (less than 5000xg) to concentrate the liquid at the bottom.</li> <li>5. Store the suspended plasmid at -20°C. The DNA is stable for at least one year from date of shipping when stored at -20°C.</li> </ol>
<b>RefSeq:</b>	<a href="#">NM_003430.1</a> , <a href="#">NP_003421.1</a>
<b>RefSeq Size:</b>	3839 bp
<b>RefSeq ORF:</b>	3576 bp
<b>Locus ID:</b>	7644
<b>UniProt ID:</b>	<a href="#">Q05481</a>
<b>Cytogenetics:</b>	19p12
<b>Domains:</b>	KRAB, zf-C2H2
<b>Protein Families:</b>	Transcription Factors
<b>MW:</b>	137 kDa
<b>Gene Summary:</b>	The ZNF91 gene encodes a zinc finger protein of the KRAB (Kruppel-associated box) subfamily (Bellefroid et al., 1991, 1993 [PubMed 2023909] [PubMed 8467795]).[supplied by OMIM, May 2010]

Product images:



Circular map for RC223098