

## Product datasheet for **RC223094**

### PCDHB14 (NM\_018934) Human Tagged ORF Clone

#### Product data:

Product Type:	Expression Plasmids
Product Name:	PCDHB14 (NM_018934) Human Tagged ORF Clone
Tag:	Myc-DDK
Symbol:	PCDHB14
Synonyms:	PCDH-BETA14
Mammalian Cell Selection:	Neomycin
Vector:	pCMV6-Entry (PS100001)
E. coli Selection:	Kanamycin (25 ug/mL)



[View online »](#)

ORF Nucleotide  
Sequence:

>RC223094 representing NM\_018934  
 Red=Cloning site Blue=ORF Green=Tags(s)

TTTTGTAATACGACTCACTATAGGGCGGCCGGAATTCGTCGACTGGATCCGGTACCGAGGAGATCTGCC  
 GCC**CGGATCGCC**

ATGGAGATCAGAGGGCACTCGATCTCGCAAAAAGCAAGTTCTAATATTCCTTGTGGTGGGATTGT  
 CTGGGCAGGTACTGAATCTGCACACTATTCTGTGGCAGAGGAAACAGAAATTGGCTCTTTTGTGGCTAA  
 CTAGCGAGGGACCTAGGGCTGGGGGTGGAGGAGCTGTCTTACGTGAAGCCCGGTAGTGTCTGATGAT  
 AATAAAAAGTATTTGCACCTTGATTTGCTGACTGGGAATTTGCTCCTAAATGAGAACTAGACCGAGACG  
 AGCTGTGTGGCTCCACCGAGCCCTGTGTCTGCATTTTCAAGTGGTTTTGGAAAACCTTTACAGTTTTT  
 TCGTTTTGAGCTGTGTCAAAGACATAAATGATCACTCCCCTACATTTCTAGACAAGGAAATACTTATT  
 AAAATATCAGAAGGTACCACTGTGGAGCTACCTTTCTAATGGAGAGTGTCAAGATTTGGATGTCGGAA  
 GCAACAGTCTCCAAAACACACAATTAGCCCAATTCTCACTTCTACATTAATAATCCCGACAGTAGTGA  
 CAGAAAGATATACCCAGAGCTGGTCTAGATAGAGCTTTAGATTATGAACAGGAAGCTGAACTCAGATTA  
 AACTCACAGCAGTGGATGGTGGATCCCGCCCAAGTCTGGGACAACCTTTGGTTCTCATCAAGGTGTTGG  
 ACATCAATGATAATGCCCTGAGTTTCTCAGAGTCTCTATGAGGTGCAAGTCCCGAGGACAGACCCCT  
 TGGCTCCTGGATTGCCACCATCTCAGCTAAGGATCTGGATGCAGGAAACTATGGAAAAATATCTTACACA  
 TTTTCCATGCATCAGAAGATATTCGTAACATTTGAAATTAATCCAATATCTGGGGAAGTTAATTTGA  
 GATCACCCCTGGATTTTGAAGTAATACAGTCTACACTATAAATATTCAGGCAACAGATGGTGGGGTCT  
 TTCAGGAAAATGCACCCTTCTAGTTAAAGTTATGGATATAAACGACAACCCACCAGAAGTGACCATATCG  
 TCGATTACAAAGAGAATCCAGAGAATGCCTCAGAGACCCTAGTAGCTTTTTTAGTATCCTAGACCAAG  
 ACTCTGGAGACAATGGGAGGATGATTTGCTCTATTCAAGATAACCTCCCTTTTTTCTGAAACCGACCTT  
 CAAGAACTTTTTCACTCTAGTTTCTGAAAAAGCACTGGACAGAGAGCCAAGCCGAGTACAACATCACG  
 ATCACCGTCACAGACTTGGGGACACCCAGGCTGAAAACCGAGTACAACATAACCGTGCTGCTCTCTGACG  
 TCAATGACAACGCCCCACCTTACCCAAACCTCTACACCCTGTTCTGTCGCGGAGAACAACAGCCCGC  
 CCTGCACATCGGCAGCGTCAGCGCCACAGACAGAGACTCAGGCACCAACGCCAGGTCAACTACTCGCTG  
 CTGCCGCCAGGACCGGCACCTGCCCTCGCCTCCTTGGTCTCCATCAACGCGGACAATGGCCACCTGT  
 TTGCCCTCAGGTCGCTGGACTACGAGGCCCTACAGGAGTTCGAGTTTTCGCGTGGGCGCCACAGACCGCG  
 GTCCCGCGGTTGAGCAGCGAGGCGCTGGTGCCTGCTGGTGTGGACGCCAACGACAACCTCGCCCTT  
 GTGCTGTACCCGCTGCAGAACGGCTCCGCGCCCTGCACCGAGCTGGTGCCTGGGCGGCCAGCCGGGCT  
 ACCTGGTGACCAAGGTGGTGGCGGTGGACGGCGACTCGGGCCAGAACGCCTGGCTGTCTGACAGCTGT  
 CAAGGCCACGGAGCCCGGGCTGTTCCGGCTGTGGGCGCAATGGCGAGGTGCGCACCGCCAGGCTGCTG  
 AGCGAGCGCAGCGGCCAAGCACAGGCTGGTGGTGTGGTCAAGGACAATGGCGAGCCTCCGCGCTCGG  
 CCACCGCCACGCTGCACGTGCTCCTGGTGGACGGCTTCTCCAGCCCTACCTGCCGCTCCTGAGGCGGC  
 CCCGGCCAGGCCAGGCCGACTCCCTCACCGTCTACCTGGTGGTGGCATTGGCCTCGGTGTCTGCTGCTC  
 TTCTCTTCTCGGTGCTCCTGTTCTGTCGGGTGCGGCTGTGCAGGAGGAGCAGGGCGGCCTCGGTGGGT  
 GCTGCTCGGTGCCGAGGGTCCCTTTCCAGGGCATCTGGTGGACGTGAGCGGCACCGGACCCCTGTCCCA  
 GAGCTACCAATACGAGGTGTGTCTGACAGGAGGTTCCGGGACAAATGAGTTCAAATTTCTGAAGCCGATT  
 ATCCCAATTTTCAAGTTCATGACACTGGTAGGAATATGGGGAAATCGAGAACCTTCGAAATAGCTTTG  
 GACTTAACATTCAA

**ACGCGT**ACGCGGCCGCTCGAGCAGAACTCATCTCAGAAGAGGATCTGGCAGCAAATGATATCCTGGATT  
 ACAAGGATGACGACGATAAGGTTTAA

**Protein Sequence:** >RC223094 representing NM\_018934  
Red=Cloning site Green=Tags(s)

MEIRGALDLRKRQVLIFLVLLGLSRAGTESAHYSVAEETEIGSFVANLARDLGLGVEELSSREARVVSDD  
NKKYLHLDLLTGNLLNEKLDRELCGSTEPVLFHFQVLENPLQFFRFELCVKDINDHSPTFLDKEILI  
KISEGTTVGATFLMESAQDLVGSNSLQNYTISPNSHFYIKIPDSSDRKIYPELVLDRALDYEQAEALRL  
TLTAVDGGSPPKSGTTLVLIKVLDINDNAPEFPQSLYEVQVPEDRPLGWIATISAKDLDAGNYGKISYT  
FFHASEDIRKTFEINPISGEVNLRSPLDFEVIQSYTINIQTADGGGLSGKCTLLVKVMDINDNPPEVTIS  
SITKRIPENASETLVALFSILDQDSDNGRMICSIQDNLPFFLKPTFKNFFTLVSEKALDRESQAEYNIT  
ITVTDLGTPrLKTEYNITVLLSDVNDNAPTFTQTSYTLFVRENNSPALHIGSVSATDRDSGTNAQVNYSL  
LPPQDRHLPLASLVINADNGHLFALRSLDYEALQEFVFRVGTDRGSPALSSEALVRVLVLDANDNSPF  
VLYPLQNGSAPCTELVPRAAEPGYLVTKVVAVDGDSGQNAWLSYQLLKATEPGLFGVWAHNGEVRTARLL  
SERDAAKHRLVVLVKDNGEPPRSATATLHVLLVDGFSQPYLPLPEAAPAQADSLTVYLVVALASVSSL  
FLFSVLLFVAVRLCRRSRAASVGRCSVPEGPFPGHLVDVSGTGTLSSQSYQYEVCLTGGSGTNEFKFLKPI  
IPNFQVHDTGRNMGEIENFRNSFGLNIQ

TRTRPLEQKLISEEDLAANDILDYKDDDDKV

**Chromatograms:** [https://cdn.origene.com/chromatograms/mg4070\\_g11.zip](https://cdn.origene.com/chromatograms/mg4070_g11.zip)

**Restriction Sites:** SgfI-MluI

Cloning Scheme:



ACCN: NM\_018934

ORF Size: 2394 bp

OTI Disclaimer: The molecular sequence of this clone aligns with the gene accession number as a point of reference only. However, individual transcript sequences of the same gene can differ through naturally occurring variations (e.g. polymorphisms), each with its own valid existence. This clone is substantially in agreement with the reference, but a complete review of all prevailing variants is recommended prior to use. [More info](#)

OTI Annotation: This clone was engineered to express the complete ORF with an expression tag. Expression varies depending on the nature of the gene.

Components: The ORF clone is ion-exchange column purified and shipped in a 2D barcoded Matrix tube containing 10ug of transfection-ready, dried plasmid DNA (reconstitute with 100 ul of water).

**Reconstitution Method:**

1. Centrifuge at 5,000xg for 5min.
2. Carefully open the tube and add 100ul of sterile water to dissolve the DNA.
3. Close the tube and incubate for 10 minutes at room temperature.
4. Briefly vortex the tube and then do a quick spin (less than 5000xg) to concentrate the liquid at the bottom.
5. Store the suspended plasmid at -20°C. The DNA is stable for at least one year from date of shipping when stored at -20°C.

**RefSeq:** [NM\\_018934.3](#)

**RefSeq Size:** 2793 bp

**RefSeq ORF:** 2397 bp

**Locus ID:** 56122

**UniProt ID:** [Q9Y5E9](#)

**Cytogenetics:** 5q31.3

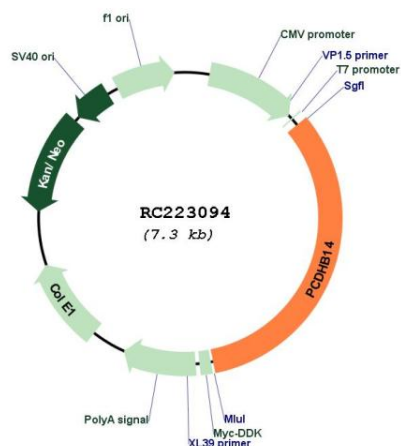
**Domains:** CA

**Protein Families:** Transmembrane

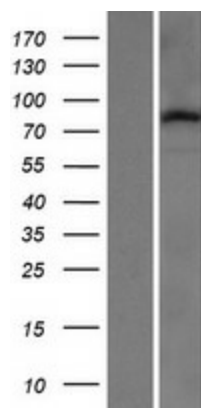
**MW:** 84.5 kDa

**Gene Summary:** This gene is a member of the protocadherin beta gene cluster, one of three related gene clusters tandemly linked on chromosome five. The gene clusters demonstrate an unusual genomic organization similar to that of B-cell and T-cell receptor gene clusters. The beta cluster contains 16 genes and 3 pseudogenes, each encoding 6 extracellular cadherin domains and a cytoplasmic tail that deviates from others in the cadherin superfamily. The extracellular domains interact in a homophilic manner to specify differential cell-cell connections. Unlike the alpha and gamma clusters, the transcripts from these genes are made up of only one large exon, not sharing common 3' exons as expected. These neural cadherin-like cell adhesion proteins are integral plasma membrane proteins. Their specific functions are unknown but they most likely play a critical role in the establishment and function of specific cell-cell neural connections. [provided by RefSeq, Jul 2008]

Product images:



Circular map for RC223094



Western blot validation of overexpression lysate (Cat# [LY412946]) using anti-DDK antibody (Cat# [TA50011-100]). Left: Cell lysates from untransfected HEK293T cells; Right: Cell lysates from HEK293T cells transfected with RC223094 using transfection reagent MegaTran 2.0 (Cat# [TT210002]).