

Product datasheet for **RC223087**

CCPG1 (NM_020739) Human Tagged ORF Clone

Product data:

Product Type:	Expression Plasmids
Product Name:	CCPG1 (NM_020739) Human Tagged ORF Clone
Tag:	Myc-DDK
Symbol:	CCPG1
Synonyms:	CPR8
Mammalian Cell Selection:	Neomycin
Vector:	pCMV6-Entry (PS100001)
E. coli Selection:	Kanamycin (25 ug/mL)



[View online »](#)

ORF Nucleotide
Sequence:

>RC223087 representing NM_020739
Red=Cloning site Blue=ORF Green=Tags(s)

TTTTGTAATACGACTCACTATAGGGCGGCCGGAATTCGTCGACTGGATCCGGTACCGAGGAGATCTGCC
GCCCGCATCGCC

ATGCTCGAAAATTCAGTGACAGTGATTTCATCTTGTGGTTGGACTGTCATCAGTCATGAGGGTCAGATA
TAGAAATGTTGAATTCGTGACCCCACTGACAGCTGTGAGCCGCCAGAAATGTCATCTTTAGAGCA
AGAGGAGCTTCAAGCATTGCAGATAGAGCAAGGAGAAAGCAGCCAAAATGGCACAGTGCTTATGGAAGAA
ACTGCTTATCCAGCTTTGGAGGAAACCAGCTCAACAATTGAGGCAGAGGAACAAAAGATACCCGAAGACA
GTATCTATATTGGAAGTCCAGTGATGATTCTGATATTGTTACCTTGAGCCACCTAAGTTAGAAGAAAT
TGGAAATCAAGAAGTTGTCATTGTTGAAGAAGCACAGAGTTCAGAAGACTTTAACATGGGCTCTTCTCT
AGCAGCCAGTATACTTTCTGTCAGCCAGAACTGTATTTTCATCTCAGCCTAGTGATGATGAATCAAGTA
GTGATGAAACCAGTAATCAGCCAGTCTGCCTTTAGACGACGCCGTGCTAGGAAGAAGACCGTTTCTGC
TTCAGAATCTGAAGACCGCTAGTTGGTGAACAAGAACTGAACCTTCTAAGGAGTTGAGTAAACGTCAG
TTCAGTAGTGGTCTCAATAAGTGTGTTATACTTGCTTTGGTGATTGCAATCAGCATGGGATTTGGCCATT
TCTATGGCACAATTCAGATTCAGAAGCGTCAACAGTTAGTCAGAAAGATACATGAAGATGAATTGAATGA
TATGAAGGATTATCTTTCCAGTGTCAACAGGAACAAGAATCTTTTATAGATTATAAGTCATTGAAAGAA
AATCTTGAAGGTGTTGGACACTTACTGAAGCAGAGAAGATGTCCTTTGAAACTCAGAAAACGAACCTTG
CTACAGAAAATCAGTATTTAAGAGTATCCCTGGAGAAGGAAGAAAAGCCTTATCCTCATTACAGGAAGA
GTTAAACAACTAAGAGAACAGATTAGAATATTGGAAGATAAAGGGACAAGTACTGAATTAGTTAAAGAA
AATCAGAACTTAAGCAGCATTGGAAGAGGAAAAGCAGAAAAACACAGCTTTCTTAGTCAAAGGGAGA
CTCTGTTGACAGAAGCAAAGATGCTAAAGAGAGAACTGGAGAGAGAACGACTAGTAACTACGGCTTTAAG
GGGGAACTCCAGCAGTTAAGTGGTAGTCAGTTACATGGCAAGTCAGATTCTCCAATGTATATACTGAA
AAAAAGGAAATAGCAATCTTACGGGAAAGACTCACTGAGCTGGAACGGAAGCTAACCTTCGAACAGCAGC
GTTCTGATTTGTGGGAAAGATTGTATGTTGAGGCAAAAAGATCAAAATGGAACAAGGAACAGATGGAAA
AAAGAAAGGGGCGAGGGAAGCCACAGGGCTAAAAATAAGTCAAAGGAAACATTTTTGGGTTCAAGTAA
GAAACATTTGATGCCATGAAGAATTCTACCAAGGAGTTTGTAAAGGCATCATAAAGAGAAAATTAAGCAG
CTAAAGAAGCTGTGAAGGAAAATCTGAAAAATCTCAGATTCAAGTAAATCCACTTTTACAGACACTTAA
AGATACCACCAAGAATATCTTTGATGAAAAGGGTAATAAAAGATTTGGTGCTACAAAAGAAGCAGCTGAA
AAACCAAGAACAGTTTTTGTGACTATTTACATCCACAGTATAAGGCACCTACAGAAAACCATCATAATA
GAGGCCCTACTATGCAAAATGATGGAAGGAAAAGAAAGCCAGTTCACCTTAAAGAATTCAGAAAAAATAC
AAATTCAAAGAAATGCAGTCTGGGCATGATTGTAGAGAAAATCTCATTCTTTTCAAGAAAGGCTTGTCT
GGTGTATTTGATTGTGCTCAACAAGAGTCCATGAGCCTTTTTAACACAGTGGTGAATCCTATAAGGATGG
ATGAATTTAGACAGATAATTCAAAGGTACATGTTAAAAGAAGTGGATACTTTTTGTCACTGGAACGAACT
TGATCAGTTCATCAATAAGTTTTCTTAAACGGTGTCTTTATACATGATCAGAAGCTCTTCACTGACTTT
GTTAATGATGTTAAAGATTATCTTAGAAACATGAAGGAATATGAAGTAGATAATGATGGAGTATTTGAGA
AGTTGGATGAATATATATAGACACTTCTTTGGTCCACTTTTTCCCTCCATATGGACCCAGGTCGGT
TTACATAAAACCGTGCATTACAGTAGTTG

ACGCGTACGCGGCCGCTCGAGCAGAACTCATCTCAGAAGAGGATCTGGCAGCAAATGATATCCTGGATT
ACAAGGATGACGACGATAAGGTTTAA

Protein Sequence: >RC223087 representing NM_020739
Red=Cloning site Green=Tags(s)

MSENSDSDSSCGWTVISHEGSDIEMLSVTPDSCPEAPECSSLEQEELQALQIEQGESSQNGTVLMEE
TAYPALEETSSTIEAEEQKIPEDSIYIGTASDDSDIVTLEPPKLEEIGNQEVVIEEAQSSDFNMGSSS
SSQYTFQCQPETVFSQPSDDESSDETSNQPSPAFRRRRARKKTVSASEDRLVGEQETEPSKELSKRQ
FSSGLNKCIVILALVIAISMFGHFYGTIQIKRQQLVRKIHEDELNDMKDYL SQCQQEQESFIDYKSLKE
NLARCWTLTEAEKMSFETQKTNLATENQYLRVLSLEKEEKALSSLQEELNKLREQIRILEDKGTSTELVKE
NQKLNKQLEEEKQKHSFLSQRETLLEAKMLKRELERERLVTALRGELQQLSGSQLHGKSDSPNYVTE
KKEIAILRERLELERKLTFEQQRSDLWERLYVEAKDQNGKQGTGDKKGGGRGSHRAKNKSKETFLGSVK
ETFDAMKNSTKEFVRHHKEIKQAKEAVKENLKKFSDSVKSTFRHFKDTTKNIFDEKGNKRFGATKEAAE
KPRTVFSYDLHPQYKAPTENHHNRGPTMQNDGRKEKPVHFKEFRKNTNSKKCSPGHDCRENSHSFRKACS
GVFDCAQQESMSLFNTVNPVIRMDEFRQIIQRYMLKELDTFCHWNELDQFINKFVFLNGVF IHDQKLFDF
VNDVKDYLRNMKEYEVDNDGVFEKLEDEIYRHFHGHTFSPPYGPRSVYIKPCHYSSL

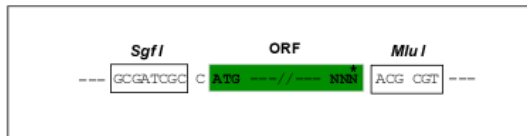
TRTRPLEQKLISEEDLANDILDYKDDDDKV

Chromatograms: https://cdn.origene.com/chromatograms/mk6688_d03.zip

Restriction Sites: Sgfl-MluI

Cloning Scheme:

Cloning sites used for ORF Shuttling:



ACCN: NM_020739

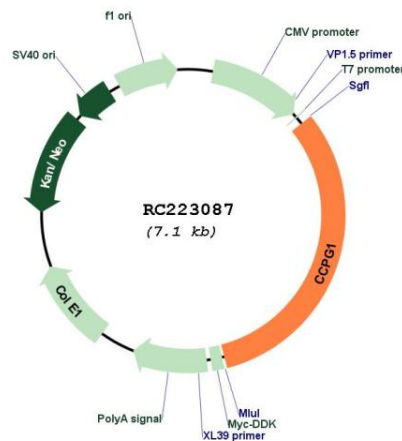
ORF Size: 2271 bp

OTI Disclaimer: The molecular sequence of this clone aligns with the gene accession number as a point of reference only. However, individual transcript sequences of the same gene can differ through naturally occurring variations (e.g. polymorphisms), each with its own valid existence. This clone is substantially in agreement with the reference, but a complete review of all prevailing variants is recommended prior to use. [More info](#)

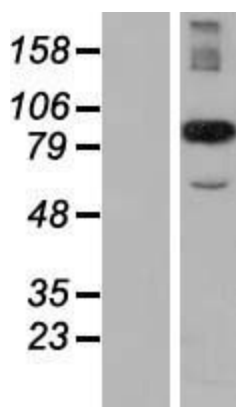
OTI Annotation: This clone was engineered to express the complete ORF with an expression tag. Expression varies depending on the nature of the gene.

Components:	The ORF clone is ion-exchange column purified and shipped in a 2D barcoded Matrix tube containing 10ug of transfection-ready, dried plasmid DNA (reconstitute with 100 ul of water).
Reconstitution Method:	<ol style="list-style-type: none"> 1. Centrifuge at 5,000xg for 5min. 2. Carefully open the tube and add 100ul of sterile water to dissolve the DNA. 3. Close the tube and incubate for 10 minutes at room temperature. 4. Briefly vortex the tube and then do a quick spin (less than 5000xg) to concentrate the liquid at the bottom. 5. Store the suspended plasmid at -20°C. The DNA is stable for at least one year from date of shipping when stored at -20°C.
RefSeq:	<u>NM_020739.1, NP_065790.1</u>
RefSeq Size:	6213 bp
RefSeq ORF:	2274 bp
Locus ID:	9236
UniProt ID:	<u>Q9ULG6</u>
Cytogenetics:	15q21.3
Protein Families:	Transmembrane
MW:	87.2 kDa
Gene Summary:	Acts as an assembly platform for Rho protein signaling complexes. Limits guanine nucleotide exchange activity of MCF2L toward RHOA, which results in an inhibition of both its transcriptional activation ability and its transforming activity. Does not inhibit activity of MCF2L toward CDC42, or activity of MCF2 toward either RHOA or CDC42 (By similarity). May be involved in cell cycle regulation.[UniProtKB/Swiss-Prot Function]

Product images:



Circular map for RC223087



Western blot validation of overexpression lysate (Cat# [LY417782]) using anti-DDK antibody (Cat# [TA50011-100]). Left: Cell lysates from untransfected HEK293T cells; Right: Cell lysates from HEK293T cells transfected with [RC223139] using transfection reagent MegaTran 2.0 (Cat# [TT210002]).