

Product datasheet for **RC223085**

EHM2 (EPB41L4B) (NM_018424) Human Tagged ORF Clone

Product data:

Product Type:	Expression Plasmids
Product Name:	EHM2 (EPB41L4B) (NM_018424) Human Tagged ORF Clone
Tag:	Myc-DDK
Symbol:	EHM2
Synonyms:	CG1; EHM2; LULU2
Mammalian Cell Selection:	Neomycin
Vector:	pCMV6-Entry (PS100001)
E. coli Selection:	Kanamycin (25 ug/mL)



[View online »](#)

ORF Nucleotide Sequence:

>RC223085 representing NM_018424
 Red=Cloning site Blue=ORF Green=Tags(s)

TTTTGTAATACGACTCACTATAGGGCGGCCGGAATTCGTCGACTGGATCCGGTACCGAGGAGATCTGCC
 GCC**GCGATCGCC**

ATGCTGCGGTTCTCTGCGCCGACCTTTGGCCGCCCTCCATGCAGCGCTACGCGCGGGCGCGCGGGG
 GCGGGGCGCGCGGCTGGGGGACGAGCGGATGGGGGCCACGGGGGGCCCGGCCCGCCGCTCCTC
 CTGCGCGCTGCCCGCGCGCCGGGGGACGCTGTTCCCGCGGGCGCGGGGCCCTGCTCACCGCGGC
 GCGGCCGTGCACATCTCCGCCCGCGCGCCGCAAGGCCACCCTACTGCCGCTTCTCTGCTCGACG
 GGACCGAAGTGAGCGTGGACCTGCCAAACATGCCAAAGGCCAGGATTTGTTTGATCAGATTGTGTACCA
 CTTGGACCTTGTTGAAACAGATTACTTTGGCTCCAGTTCCTCGACTCTGCCAGGTTGCGCACTGGCTG
 GATCATGCCAAACCCATAAAAAAGCAGATGAAATTTGGACCTGCTTATGCTTTACTTTTCGAGTTAAAT
 ACTATTCTTCAGAACAAACAACCTTCGTGAGGAGTTTACAAGGTACCTGTTTGTTCACAACTCAGGCA
 TGACATCTTTCTGGAAAATTGAAATGCCCTTATGAAACAGCTGTGGAATTAGCTGCTCTGTCTACAA
 GCGGAGCTTGGGAGTGCAGCTTCCAGAACACACACCAGAGCTTGTGTCTGAGTTTCGGTTCATCCAA
 ATCAGACAGAAGCAATGGAATTTGATATCTCCAGAGATGGAAAGAGTGCAGGGGAAAGGCCCTGCCCA
 GGCGGAACTCTCCTATCTGAATAAAGCGAAGTGGCTGGAATGTATGGGGTAGACATGCACGTTGTCAGG
 GGAAGAGATGGCTGTGAATATTCTTTGGACTGACCCCGACAGGCATATTAATCTTTGAAGGAGCTAACAA
 AAATAGGCTTATTCTTTGGCCTAAAATTACCAAAATGGATTTTAAAAAGAGCAAATTGACACTCGTGGT
 GGTCGAGGATGATGATCAGGGACGTGAGCAAGAGCACAGTTCGTTTCCGGTTAGACAGTGCAGGACC
 TGCAAAACACCTTTGGAAGTGTGCAGTTGAGCACCACGCATTCTCCGACTGCGGACGCCAGGAAACAGCA
 AATCCAATAGATCCGACTTTATCAGGCTGGCTCTCGCTTCAGATTAGTGGGCGGACAGAATATCAAGC
 TACACATGGCTCCAGGTTACGAAGAACCAGCACCTTTGAGAGGAAGCCTAGTAAACGTTATCCATCCCGG
 AGACATCAACGTTCAAAGCAAGCAACCCAGTATAGCAGCCAGCTCTGCTCTAAAAACAAATCCAGAAG
 TCCATAATTACCAGCCTCAATATCATCCTAATATCCATCCAGCCAGCCCGGTGGCATCCTCACTCTCC
 AAATGTCAGGCCATCCTTCAGGATGACAGGTCGATTGGAAAGCATCGGCCAGTGGAGATGACAGCCAT
 TTTGATTATGTCCAGCACCAGAACCAGAAGAACTTAGGAGGGATGCAAAGTATGATGATCGAGATAAAC
 TCATGACTGCATT

ACGCGTACGCGGCGGCTCGAGCAGAAACTCATCTCAGAAGAGGATCTGGCAGCAAATGATATCCTGGATT
 ACAAGGATGACGACGATAAGGTTTAA

Protein Sequence:

>RC223085 representing NM_018424
 Red=Cloning site Green=Tags(s)

MLRFLRRTFGRRSMQRYARGAAGRGAAGLGDERDGGPRGGPAAAASSSALPAAPGGSVFPAGGGPLLTTGG
 AAVHISAAGAATLYCRVFLLDGTEVSVDLPKHAKGQDLFDQIVYHLDLVETDYFGLQFLDSAQVAHWL
 DHAKPIKQMKIGPAYALHFRVKYSSSEPNLREEFTRYLVFLQLRHDILSGKLCOPYETAVELAALCLQ
 AELGECELPETPELVSEFRFIPNQTEAMEFDIFQRWKECRGKSPAQAELSYLNKAKWLEMYGVDMMHVVR
 GRDGCEYSLGLTPTGILIFEGANKIGLFFWPKITKMDFKKSKLTLVVVEDDDQGREQEHTFVFRLDSART
 CKHLWKCAVEHHAFRLRTPGNSKSNRSDFIRLGSFRFSGRTEYQATHGSRLRRTSTFERKPSKRYPSR
 RHSTFKASNPVIAAQLCSKTNPVHNYQPQYHPNIHPSQPRWHPHSPNVRPSFQDDDRSHWKASASGDDSH
 FDYVHDQNKNLGGMQSMYRDKLMAL

TRTRPLEQKLISEEDLAANDILDYKDDDDKV

Restriction Sites:

Sgfl-MluI

Cloning Scheme:


ACCN: NM_018424

ORF Size: 1554 bp

OTI Disclaimer: The molecular sequence of this clone aligns with the gene accession number as a point of reference only. However, individual transcript sequences of the same gene can differ through naturally occurring variations (e.g. polymorphisms), each with its own valid existence. This clone is substantially in agreement with the reference, but a complete review of all prevailing variants is recommended prior to use. [More info](#)

OTI Annotation: This clone was engineered to express the complete ORF with an expression tag. Expression varies depending on the nature of the gene.

Components: The ORF clone is ion-exchange column purified and shipped in a 2D barcoded Matrix tube containing 10ug of transfection-ready, dried plasmid DNA (reconstitute with 100 ul of water).

- Reconstitution Method:**
1. Centrifuge at 5,000xg for 5min.
 2. Carefully open the tube and add 100ul of sterile water to dissolve the DNA.
 3. Close the tube and incubate for 10 minutes at room temperature.
 4. Briefly vortex the tube and then do a quick spin (less than 5000xg) to concentrate the liquid at the bottom.
 5. Store the suspended plasmid at -20°C. The DNA is stable for at least one year from date of shipping when stored at -20°C.

RefSeq: [NM_018424.3](#), [NP_060894.2](#)

RefSeq Size: 3783 bp

RefSeq ORF: 1557 bp

Locus ID: 54566

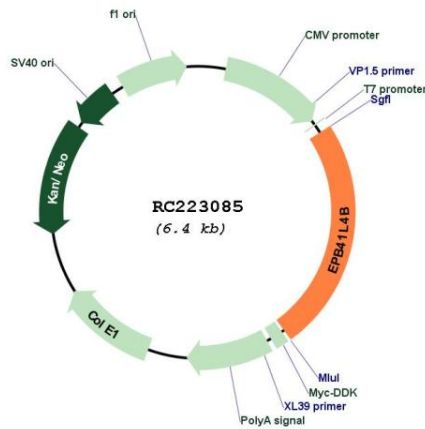
UniProt ID: [Q9H329](#)

Cytogenetics: 9q31.3

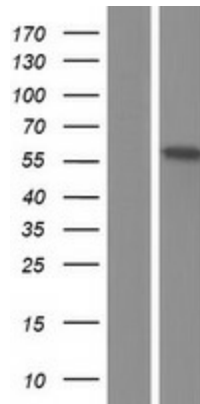
MW: 58.4 kDa

Gene Summary: Up-regulates the activity of the Rho guanine nucleotide exchange factor ARHGEF18 (By similarity). Involved in the regulation of the circumferential actomyosin belt in epithelial cells (PubMed:22006950). Promotes cellular adhesion, migration and motility in vitro and may play a role in wound healing (PubMed:23664528). May have a role in mediating cytoskeletal changes associated with steroid-induced cell differentiation (PubMed:14521927). [UniProtKB/Swiss-Prot Function]

Product images:



Circular map for RC223085



Western blot validation of overexpression lysate (Cat# [LY413053]) using anti-DDK antibody (Cat# [TA50011-100]). Left: Cell lysates from untransfected HEK293T cells; Right: Cell lysates from HEK293T cells transfected with RC223085 using transfection reagent MegaTran 2.0 (Cat# [TT210002]).