

Product datasheet for **RC223075**

FUT8 (NM_178155) Human Tagged ORF Clone

Product data:

Product Type:	Expression Plasmids
Product Name:	FUT8 (NM_178155) Human Tagged ORF Clone
Tag:	Myc-DDK
Symbol:	FUT8
Synonyms:	CDGF; CDGF1
Mammalian Cell Selection:	Neomycin
Vector:	pCMV6-Entry (PS100001)
E. coli Selection:	Kanamycin (25 ug/mL)



[View online »](#)

ORF Nucleotide Sequence:

>RC223075 representing NM_178155
 Red=Cloning site Blue=ORF Green=Tags(s)

TTTTGTAATACGACTCACTATAGGGCGGCCGGAATTCGTCGACTGGATCCGGTACCGAGGAGATCTGCC
 GCC**GCGATCGCC**

ATGCGGCCATGGACTGGTTCCTGGCGTTGGATTATGCTCATTCTTTTGCCTGGGGACCTTGCTGTTTT
 ATATAGGTGGTCACTTGGTACGAGATAATGACCATCCTGATCACTCTAGCCGAGAACTGTCCAAGATTCT
 GGCAAAGCTTGAACGCTTAAAACAACAGAAATGAAGACTTGAGGCGAATGGCCGAATCTCTCCGGATACCA
 GAAGGCCCTATTGATCAGGGGCCAGCTATAGGAAGAGTACGCGTTTTAGAAGAGCAGCTTGTAAAGGCCA
 AAGAACAGATTGAAAATTACAAGAAACAGACCAGAAATGGTCTGGGGAAGGATCATGAAATCCTGAGGAG
 GAGGATTGAAAATGGAGCTAAAGAGCTCTGTTTTTCTACAGAGTGAATTGAAGAAATTAAGAACTTA
 GAAGGAAATGAACTCAAAGACATGCAGATGAATTTCTTTGGATTTAGGACATCATGAAAGGTCTATAA
 TGACGGATCTATACTACCTCAGTCAGACAGATGGAGCAGGTGATTGGCGGAAAAAGAGGCCAAAAGATCT
 GACAGAATGGTTCAGCGGAGAATAACATATCTTCAGAATCCCAAGGACTGCAGCAAAGCCAAAAAGCTG
 GTGTGTAATACAACAAAGGCTGTGGCTATGGCTGTCAGCTCCATCATGTGGTCTACTGTTTCATGATTG
 CATATGGCACCCAGCGAACACTCATCTTGAATCTCAGAATTGGCGCTATGCTACTGGTGGATGGGAGAC
 TGTATTTAGGCCGTGAAGTGAGACATGCACAGACAGATCTGGCATCTCCACTGGACACTGGTCAGGTGAA
 GTGAAGGACAAAAATGTTCAAGTGGTCGAGCTTCCCATTTAGACAGTCTTCATCCCCGTCTCCATATT
 TACCCTTGGCTGTACCAGAAGACCTCGCAGATCGACTTGTACGAGTGCATGGTGACCCTGCAGTGTGGTG
 GGTGTCTCAGTTTGTCAAATACTTGATCCGCCACAGCCTTGGCTAGAAAAAGAAATAGAAGAAGCCACC
 AAGAAGCTTGGCTTCAAACATCCAGTTATTGGAGTCCATGTGACGCGCACAGACAAAGTGGGAACAGAAG
 CTGCCTTCCATCCATTGAAGAGTACATGGTGCATGTTGAAGAACATTTTCAGCTTCTTGCACGCAGAAT
 GCAAGTGGACAAAAAGAGTGTATTTGGCCACAGATGACCCTTCTTTATTAAGGAGGCCAAAAACAAG
 TACCCCAATTATGAATTTATTAGTGATAACTCTATTTCTGGTCACTGGACTGCACAATCGATACACAG
 AAAATTCACTTCTGGAGTGATCCTGGATATACATTTTCTCTCAGGCAGACTTCTAGTGTGACTTTT
 TTCATCCAGGTCTGTCGAGTTGCTTATGAAATATGCAAACACTACATCCTGATGCCTCTGCAAATTC
 CATTCTTTAGATGACATCTACTATTTTGGGGCCAGAATGCCACAATCAAATTGCCATTTATGCTCACC
 AACCCCGAAGTGCAGATGAAATCCCATGGAACCTGGAGATATCATTGGTGTGGCTGGAATCATTGGGA
 TGGCTATTCTAAAGGTGTCAACAGGAAATGGGAAGGACGGCCATATCCCTCTACAAAGTTCGAGAG
 AAGATAGAAACGGTCAAGTACCCACATATCCTGAGGCTGAGAAA

AG**GCGACCG**ACGCGTACGCGGCCGCTCGAGCAGAACTCATCTCAGAAGAGGATCTGGCAGCAAATGATATCC
 TGGATTACAAGGATGACGACGATAAGGTTTAA

Protein Sequence:

>RC223075 representing NM_178155
 Red=Cloning site Green=Tags(s)

MRPWTGSWRWIMLILFAWGTLFFYIGGHLVRDNDHPDSSRELSKILAKLERLKQONEDLRRMAESLRIP
 EGPIDQGPAGRVRVLEEQLVKAKEQIENYKQTRNGLGKDHEILRRRIENGAKELWFFLQSELKLLKLN
 EGNELQRHADEFLLDLGHHERSIMTDLYL SQTGAGDWREKEAKDL TELVQRRIYTLQNPKDCKAKKL
 VCNINKGCGYGCQLHHVVYCFMIA YGTQRTL ILESQNWRYATGGWETVFRPVSETCTDRSGISTGHWSGE
 VKDKNVQVVLP IVDLSLHPRPPYLP LPAVPEDLADRLVRVHGDPVWVWSQFVKYLIRPQPWLEKEIEEAT
 KKLGFKHPVIGVHVRRTDKVGTEAAFHP IEEYMHVVEEHFQLARRMQVDKRVLYLATDDPSLLKEAKTK
 YPNYEFISDNSISWSAGLHNRYTENS LRGVILDIHFLSQADFLVCTFSSQVCRVAYEIMQTLHPDASANF
 HSLDDIYYFGGQNAHNQIAIYAHQPRTADEIPMEPGDIIIGVAGNHWGDGYSKGVNRKLGRTGLYPSYKVR
 KIETVKYPTYPEAEK

SGP**TRTRRLEQKLI**SEEDLAANDILDYKDDDDKV

Chromatograms:

https://cdn.origene.com/chromatograms/mk8013_c07.zip

Restriction Sites:

Sgfl-RsrII

Cloning Scheme:


ACCN: NM_178155

ORF Size: 1725 bp

OTI Disclaimer: The molecular sequence of this clone aligns with the gene accession number as a point of reference only. However, individual transcript sequences of the same gene can differ through naturally occurring variations (e.g. polymorphisms), each with its own valid existence. This clone is substantially in agreement with the reference, but a complete review of all prevailing variants is recommended prior to use. [More info](#)

OTI Annotation: This clone was engineered to express the complete ORF with an expression tag. Expression varies depending on the nature of the gene.

Components: The ORF clone is ion-exchange column purified and shipped in a 2D barcoded Matrix tube containing 10ug of transfection-ready, dried plasmid DNA (reconstitute with 100 ul of water).

- Reconstitution Method:**
1. Centrifuge at 5,000xg for 5min.
 2. Carefully open the tube and add 100ul of sterile water to dissolve the DNA.
 3. Close the tube and incubate for 10 minutes at room temperature.
 4. Briefly vortex the tube and then do a quick spin (less than 5000xg) to concentrate the liquid at the bottom.
 5. Store the suspended plasmid at -20°C. The DNA is stable for at least one year from date of shipping when stored at -20°C.

Note: Plasmids are not sterile. For experiments where strict sterility is required, filtration with 0.22um filter is required.

RefSeq: [NM_178155.3](#)

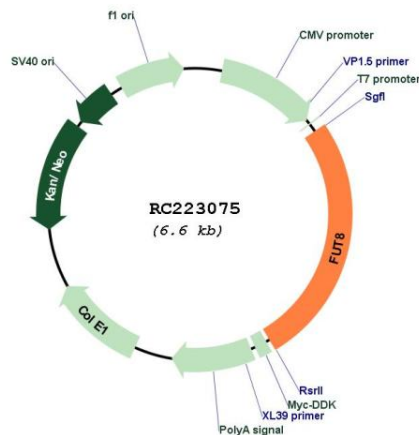
RefSeq Size: 3775 bp

RefSeq ORF: 1728 bp

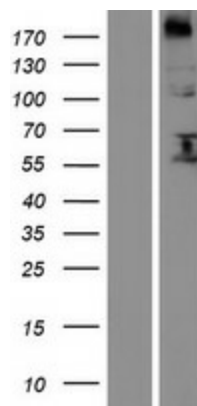
Locus ID: 2530

UniProt ID: [Q9BYC5](#)
Cytogenetics: 14q23.3
Protein Families: Transmembrane
Protein Pathways: Keratan sulfate biosynthesis, Metabolic pathways, N-Glycan biosynthesis
MW: 66.3 kDa
Gene Summary: This gene encodes an enzyme belonging to the family of fucosyltransferases. The product of this gene catalyzes the transfer of fucose from GDP-fucose to N-linked type complex glycopeptides. This enzyme is distinct from other fucosyltransferases which catalyze alpha1-2, alpha1-3, and alpha1-4 fucose addition. The expression of this gene may contribute to the malignancy of cancer cells and to their invasive and metastatic capabilities. Alternative splicing results in multiple transcript variants. [provided by RefSeq, May 2011]

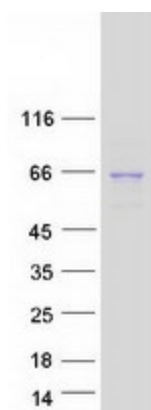
Product images:



Circular map for RC223075



Western blot validation of overexpression lysate (Cat# [LY406002]) using anti-DDK antibody (Cat# [TA50011-100]). Left: Cell lysates from untransfected HEK293T cells; Right: Cell lysates from HEK293T cells transfected with RC223075 using transfection reagent MegaTran 2.0 (Cat# [TT210002]).



Coomassie blue staining of purified FUT8 protein (Cat# [TP323075]). The protein was produced from HEK293T cells transfected with FUT8 cDNA clone (Cat# RC223075) using MegaTran 2.0 (Cat# [TT210002]).