

Product datasheet for **RC223074**

POTEA (NM_001002920) Human Tagged ORF Clone

Product data:

Product Type:	Expression Plasmids
Product Name:	POTEA (NM_001002920) Human Tagged ORF Clone
Tag:	Myc-DDK
Symbol:	POTEA
Synonyms:	A26A1; CT104.3; POTE-8; POTE8
Mammalian Cell Selection:	Neomycin
Vector:	pCMV6-Entry (PS100001)
E. coli Selection:	Kanamycin (25 ug/mL)



[View online »](#)

ORF Nucleotide Sequence:

>RC223074 representing NM_001002920
 Red=Cloning site Blue=ORF Green=Tags(s)

TTTTGTAATACGACTCACTATAGGGCGGCCGGAATTCGTCGACTGGATCCGGTACCGAGGAGATCTGCC
 GCC**CGCATCGCC**

ATGGTGGCTGAGTTTCTCCAAAGCTGGCTGCCTCCCCTATGAAGAAGCCCTTTGGCTTCAGGGCAAGA
 TGGCAAGTGGTCTGCTGCTGCTTCCCCTGCTGCAGGGGAAGCGCAAGAACAACATGGGTGCTTGGAG
 AGACCACGACGACAGCGCCTTACCGGAGCCAAGGTATCACGTCCGTCGAGAAGATCTGGCAAGCTCCAC
 AGAGCTGCCTGGTGGGTGAAGTCCCAGAGCGGATCTCATCGTCATGCTCAGGGGCCCTGGCATTAAACA
 AAAGGGACAAGAAGAAGAGGACTGCTCTACACTTGGCCTGTGCCAATGGCAATTCAGAAGTAGTAAGTCT
 TCTGCTGGACAGACAATGTCAACTTCATGTCTTTGACAGCAAAAAGAGGACAGCTCTGATAAAGGCCGTA
 CAATGCCAGGAGGATGAATGTGCGTTAATGTTGCTACAACATGGCACTGATCCAAATCTCCAGATATGT
 ATGGGAATACTGCTCTACACTATGCAGTCTACAATGAAGATAAATAATGGCCAAAACACTGCTTTTATA
 CGGTGCTGACATTGAATCAAAAACAAGGGTGGCCTCACACCACCTTTGCTTGTGTACATGGACAAAA
 CAGCGAATGGTGAATTTTTAATCAAGAAAAAGCTAATTTAAATGCACTTGATAGGTTTGAAGAATTT
 GCCAATTACTTTCTGACTACAAAGAAAACAGATGCCAAACAACCTCTTCTGGAAATAGCAATCCAGAACA
 AGACTTAAAGCTGACATCAGAGGAAGAGCCACAAGGCTTAAAGGAAGTAAAAATAGTCAGCATGAGAAA
 GTGACTCAAGAACCAGACATAAATAAGGATTGCGATAGAGAGGTTGAAGAAGAAATGCAGAAGCATGGAA
 GTAATAATGTGGGATTATCAGAAAACCTGACTGATGGTGTCTGCTGGCAATGGTGTGGTGGATTAGT
 TCCACAAAAGAAAGAGCAGAAAAGCATGAAAATCAGCAATTCCTAACACAGAGATTGAAGAGTATCACAGG
 CCTGAAAAGAAATCTAATGAAAAGAACAAGGTCAAAAGCCAAATACATTCAGTGGATAACCTTGTGACA
 TAACATGGCCATCAGAAATAGCGTCAGAGGATTATGATTTGCTTTTCTCTAATTATGAGACTTTTACATT
 GCTCATTGAACAACCTAAAATGGATTTTAACGATTCTGCTAGCCTATCAAAAATCCAGGATGCAGTTATT
 TCAGAAGAACTTACTAGAACTCAAAAATAGCCACTATGAGCAACTTACAGTAGAAGTTGAACAATGG
 AAAATATGGTTCATGTACTACAAAA

ACGCGTACGCGGCCGCTCGAGCAGAACTCATCTCAGAAGAGGATCTGGCAGCAATGATATCCTGGATT
 ACAAGGATGACGACGATAAGGTTTAA

Protein Sequence:

>RC223074 representing NM_001002920
 Red=Cloning site Green=Tags(s)

MVAEVSPKLAASPMKKPFGRGKMGKWCFFPCRCGSGKNMGAWRDHDDSAFTEPRYHVRREDLGLK
 RAAWWEVPRADLIVMLRGPINKRDKKRTALHLACANGNSEVVSLLDRQCQLHVFDKSKRTALIKAV
 QCQEDECALMLLQHGTDPNLPDMYGNTALHYAVYNEDKLMAKTLLLYGADIESKNKGGLTPLLLAVHGQK
 QRMVKFLIKKKANLALDRFGRICQLLSDYKENQMPNNSGNSNPEQDLKLTSEEPQRLKGSSENSQHEK
 VTQEPDINKDCDREVEEEMQKHGSNNVGLSENLTGAAAAGNGDGLVLPQRKSRKHENQQFPNTEIEEYHR
 PEKKSNEKNKVKSQIHSVDNLDDITWPSEIASEDYDLLFSNYETFLLIEQLKMFNDSASLSKIQDAVI
 SEEHLLLEKNSHYEQLTVEVEQMENMVHVLQK

TRTRPLEQKLISEEDLAANDILDYKDDDDKV

Chromatograms:

https://cdn.origene.com/chromatograms/ja1396_f08.zip

Restriction Sites:

Sgfl-Mlul

Cloning Scheme:



ACCN: NM_001002920

ORF Size: 1356 bp

OTI Disclaimer: The molecular sequence of this clone aligns with the gene accession number as a point of reference only. However, individual transcript sequences of the same gene can differ through naturally occurring variations (e.g. polymorphisms), each with its own valid existence. This clone is substantially in agreement with the reference, but a complete review of all prevailing variants is recommended prior to use. [More info](#)

OTI Annotation: This clone was engineered to express the complete ORF with an expression tag. Expression varies depending on the nature of the gene.

Components: The ORF clone is ion-exchange column purified and shipped in a 2D barcoded Matrix tube containing 10ug of transfection-ready, dried plasmid DNA (reconstitute with 100 ul of water).

- Reconstitution Method:
1. Centrifuge at 5,000xg for 5min.
 2. Carefully open the tube and add 100ul of sterile water to dissolve the DNA.
 3. Close the tube and incubate for 10 minutes at room temperature.
 4. Briefly vortex the tube and then do a quick spin (less than 5000xg) to concentrate the liquid at the bottom.
 5. Store the suspended plasmid at -20°C. The DNA is stable for at least one year from date of shipping when stored at -20°C.

RefSeq: [NM_001002920.1](#), [NP_001002920.1](#)

RefSeq Size: 1838 bp

RefSeq ORF: 1359 bp

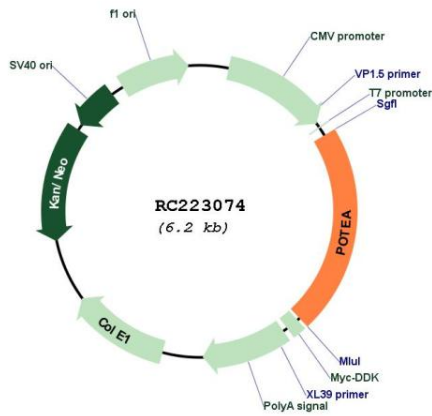
Locus ID: 340441

UniProt ID: [Q6S8I7](#)

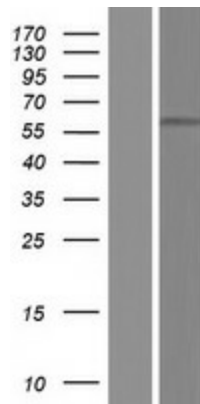
Cytogenetics: 8p11.1

MW: 51.1 kDa

Product images:



Circular map for RC223074



Western blot validation of overexpression lysate (Cat# [LY424116]) using anti-DDK antibody (Cat# [TA50011-100]). Left: Cell lysates from untransfected HEK293T cells; Right: Cell lysates from HEK293T cells transfected with RC223074 using transfection reagent MegaTran 2.0 (Cat# [TT210002]).